

DEMOLITION LEGEND:

- (S1) DEMOLITION NOTE
- — — — — EXISTING CONSTRUCTION TO REMAIN
- - - - - EXISTING CONSTRUCTION TO BE REMOVED
- ▨ NOT IN SCOPE

DEMOLITION NOTES:

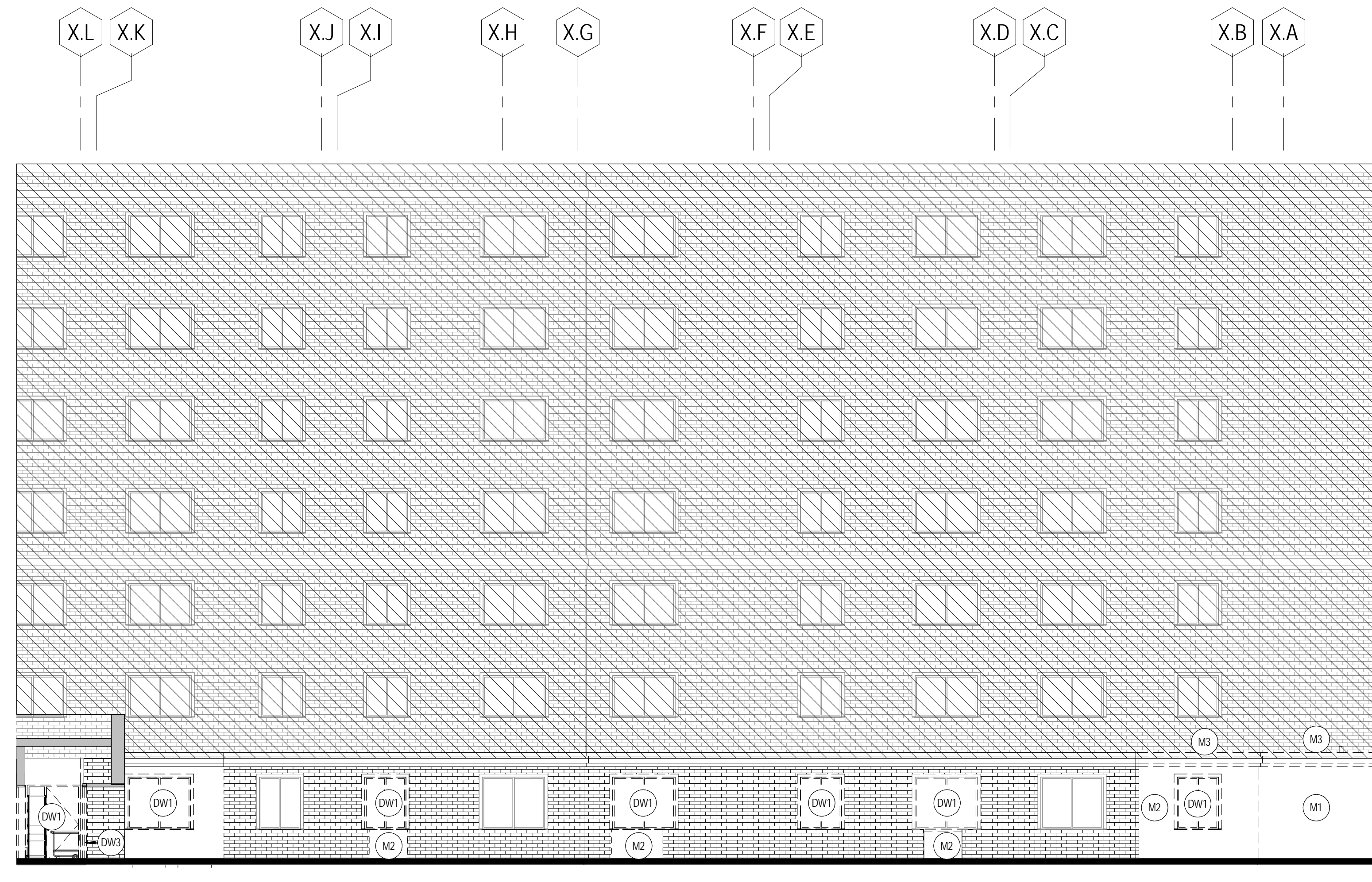
- GENERAL NOTES:**
- The demolition plans and elevations illustrate the concept of the architectural demolition. They are not intended to be a complete representation of all demolition work required. All Drawings and Specifications are to be considered when determining the scope of demolition for the Project. It is the intent of the Drawings and Specifications to require demolition of all building elements as necessary for the installation of work required by the Scope of this Project.
 - Dashed lines generally represent items to be removed. It is the Contractor's responsibility to field verify exact limits and details of required demolition and coordinate with plans and details.
 - Remove partitions to structure above, unless otherwise indicated by construction details.
 - Remove masonry for new openings as required for the installation of new lintels.
 - Remove doors, frames and hardware including sidelights, transoms and thresholds where doors are shown dashed, unless otherwise indicated.
 - Remove portions of all suspended ceilings for the installation of new work to be done above ceilings, unless otherwise indicated. Save usable components for reinstallation where ceilings are not being replaced.
 - Remove all chalk, marker and tack boards, shelving and other equipment on walls to be removed or furred.
 - Remove concrete slabs and fills as required for installation of new mechanical, electrical and plumbing services. See Mechanical, Electrical and Plumbing drawings.
 - Refer to MEP and FP drawings for additional demolition notes and scope.
 - Remove existing finish ceilings in scope of work area, including but not limited to acoustical ceiling systems and drywall systems, complete, unless otherwise noted.
 - Remove existing finish flooring systems in scope of work area complete.

- MASONRY**
- M1 Remove masonry wall.
 - M2 Remove masonry wall as required for new work.
 - M3 Remove and reinstall brick as required for new roof tie-in - see section details
 - M4 Remove and reinstall brick as required for new door and windows

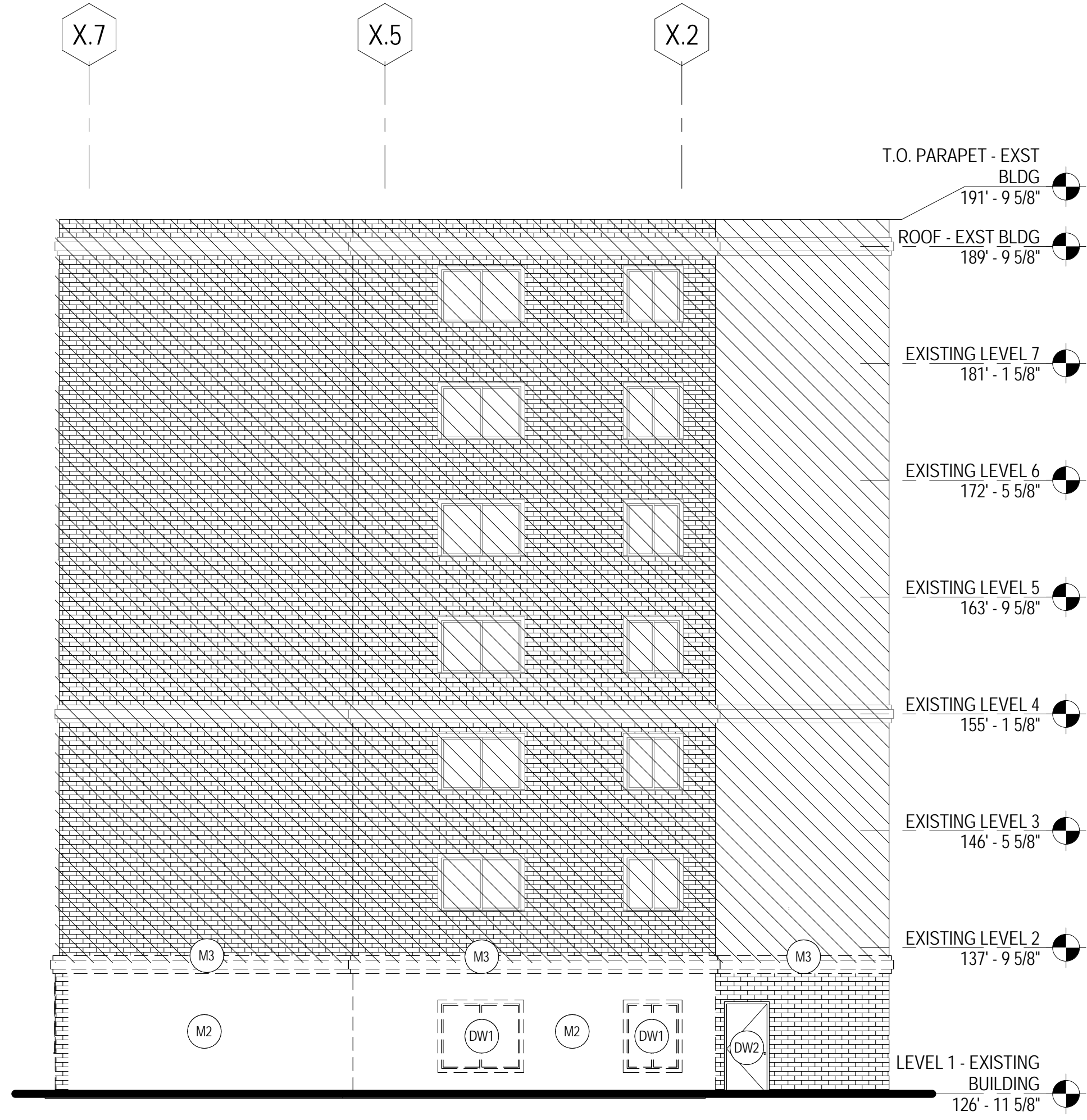
- DOORS AND WINDOWS**
- DW1 Remove existing window(s) complete.
 - DW2 Remove door and hardware only (existing frame to remain)
 - DW3 Remove aluminum entrance unit complete.
 - DW4 Remove door and frame.

- CEILING**
- CL1 Remove acoustic ceiling system complete.

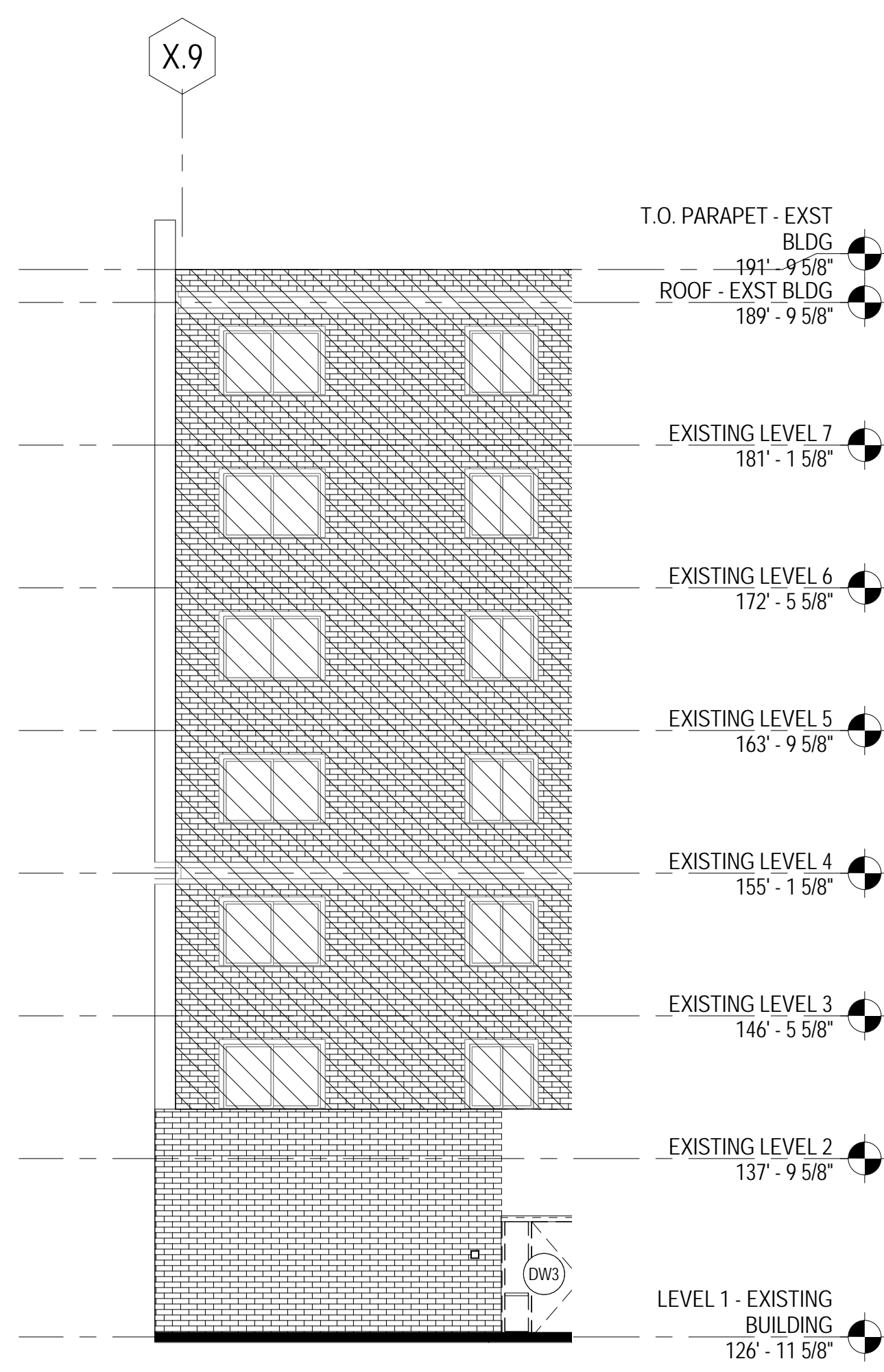
- EQUIPMENT**
- E14 Remove HVAC equipment. See Mechanical Drawings.



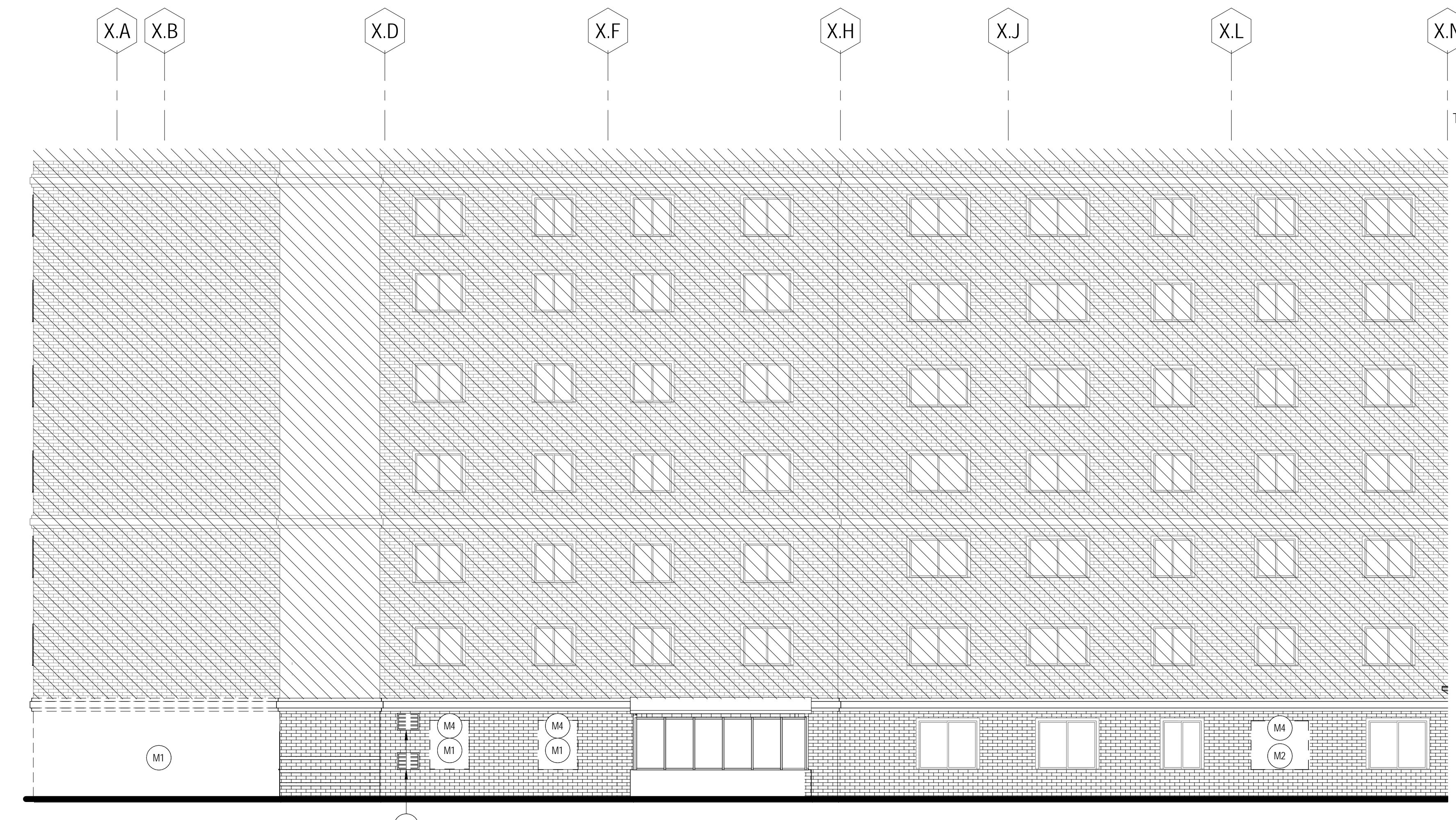
E3 DEMOLITION EAST ELEVATION EXISTING BUILDING A
 AD2.1 1/8" = 1'-0"



E10 DEMOLITION NORTH ELEVATION EXISTING BUILDING
 AD2.1 1/8" = 1'-0"



J3 DEMOLITION EAST ELEVATION EXISTING BUILDING
 AD2.1 1/8" = 1'-0"



J6 DEMOLITION WEST ELEVATION EXISTING BUILDING
 AD2.1 1/8" = 1'-0"

RENOVATIONS AND ADDITIONS

777 Stevens Ave
 Portland, ME 04103

NO.	DESCRIPTION	DATE

CONTENT:
 DEMOLITION ELEVATIONS

DRAWN BY: KM

PROJECT NO: 13-059-00

DATE: 06/05/2015

REVISED:

SCALE: As indicated

AD2.1

Project Phase
100% CONSTRUCTION DOCUMENTS

COPYRIGHT © 2015 BY LAVALLEE|BRENSINGER PROFESSIONAL ASSOCIATION. ALL RIGHTS RESERVED. NO REPRODUCTION WITHOUT PERMISSION.