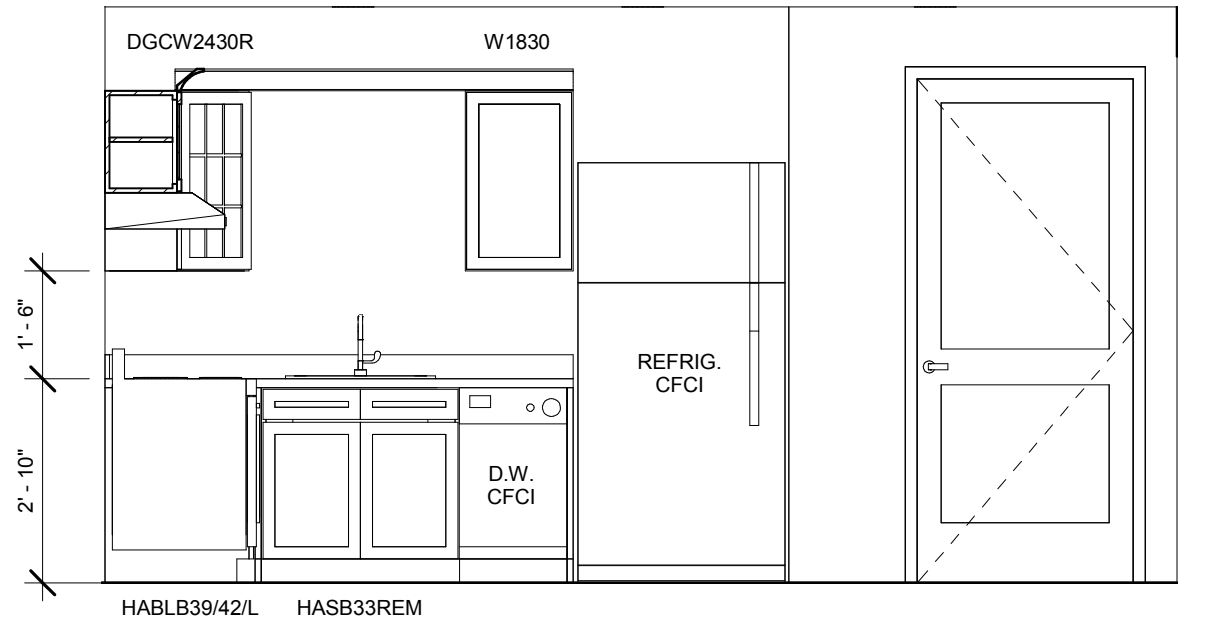
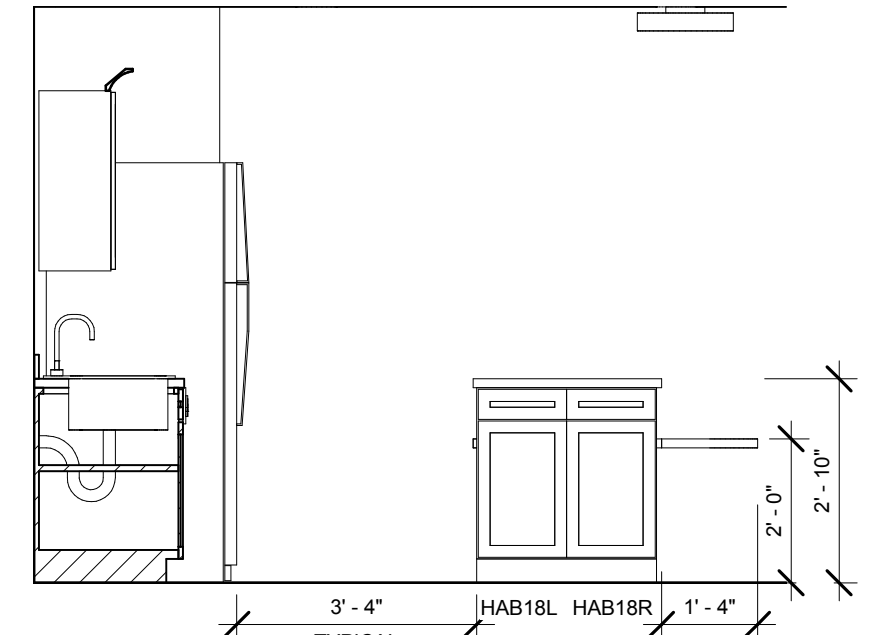


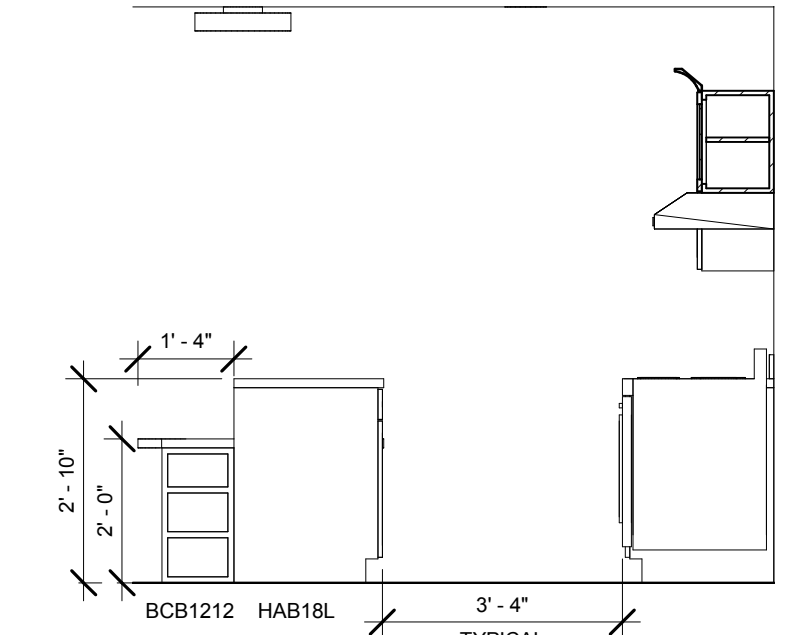
**B1** TYPICAL KITCHEN ELEVATION A, UNIT TYPES A, D, E, F, G  
 J, L, M  
 A6.1 3/8" = 1'-0"



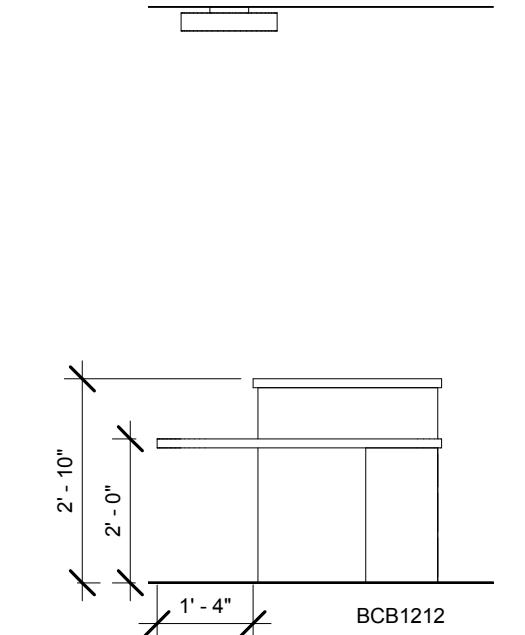
**B4** TYPICAL KITCHEN ELEVATION B, UNIT TYPES A, D, E, F, G  
 J, L, M  
 A6.1 3/8" = 1'-0"



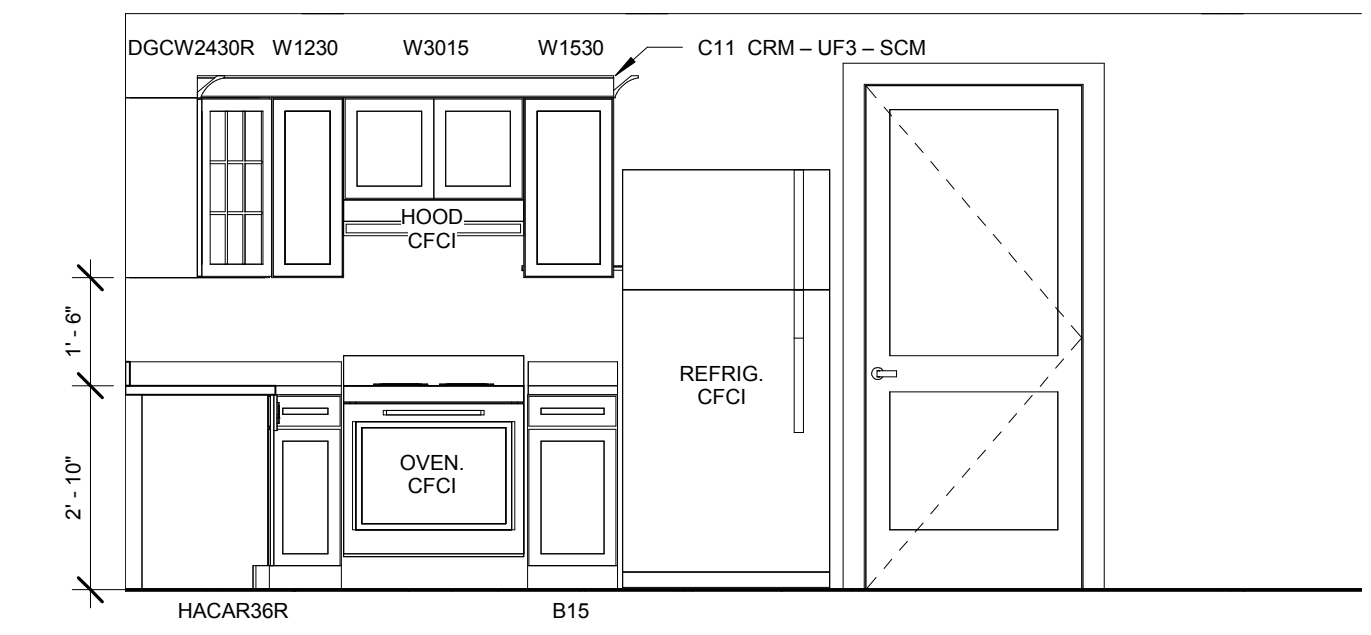
**B7** TYPICAL KITCHEN ISLAND  
 A6.1 3/8" = 1'-0"



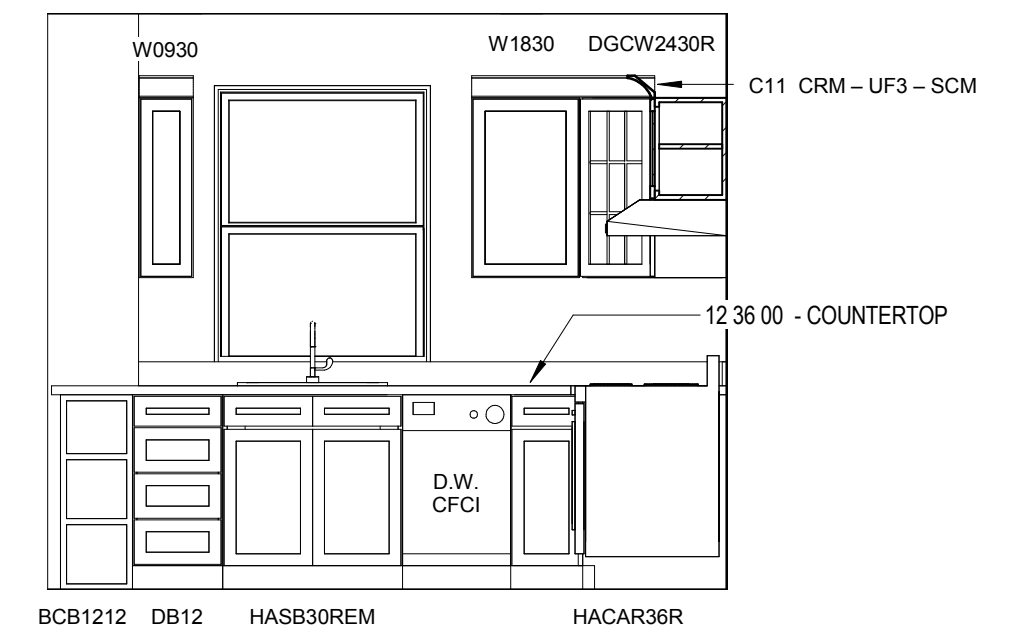
**B9** TYPICAL KITCHEN ISLAND  
 A6.1 3/8" = 1'-0"



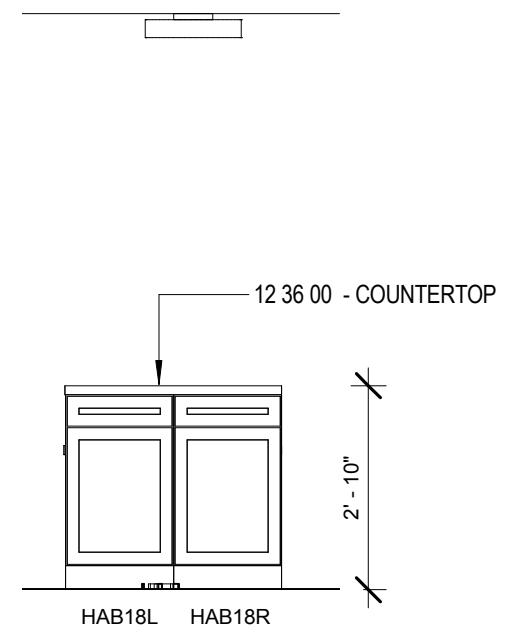
**B13** TYPICAL KITCHEN ISLAND  
 A6.1 3/8" = 1'-0"



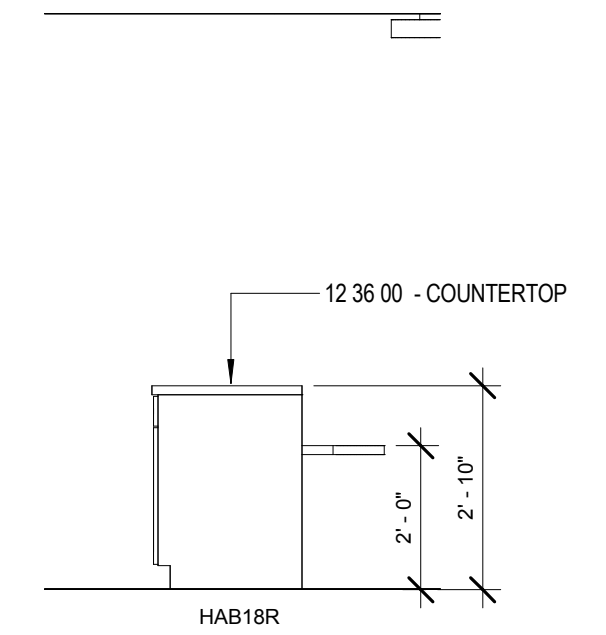
**D1** UNIT TYPE B KITCHEN ELEVATION A  
 A6.1 3/8" = 1'-0"



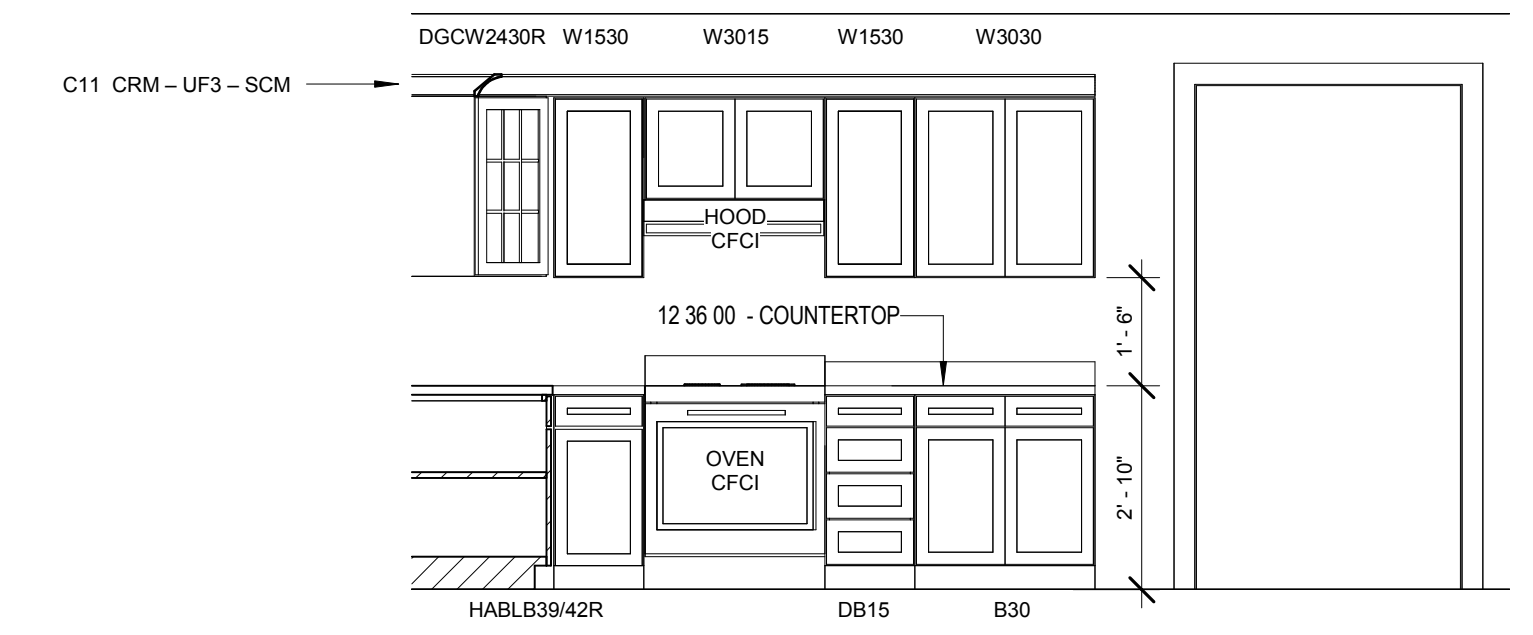
**D4** UNIT TYPE B KITCHEN ELEVATION B  
 A6.1 3/8" = 1'-0"



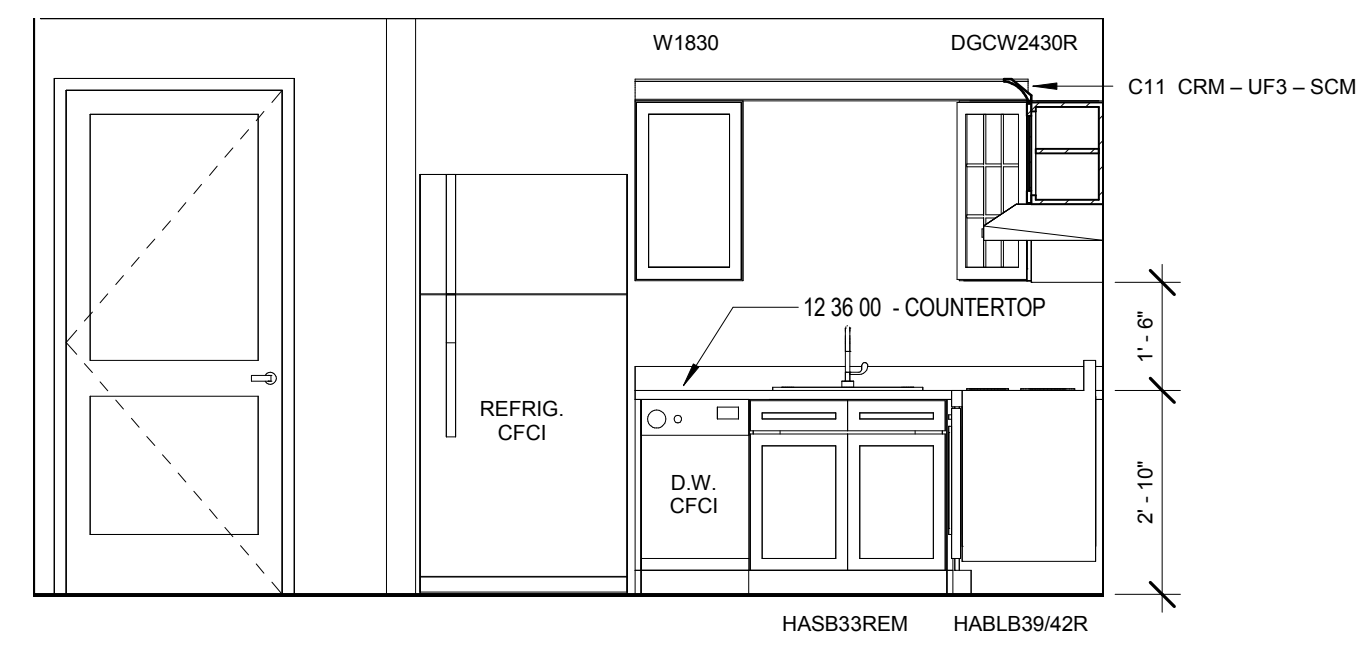
**D7** UNIT B KITCHEN ISLAND  
 A6.1 3/8" = 1'-0"



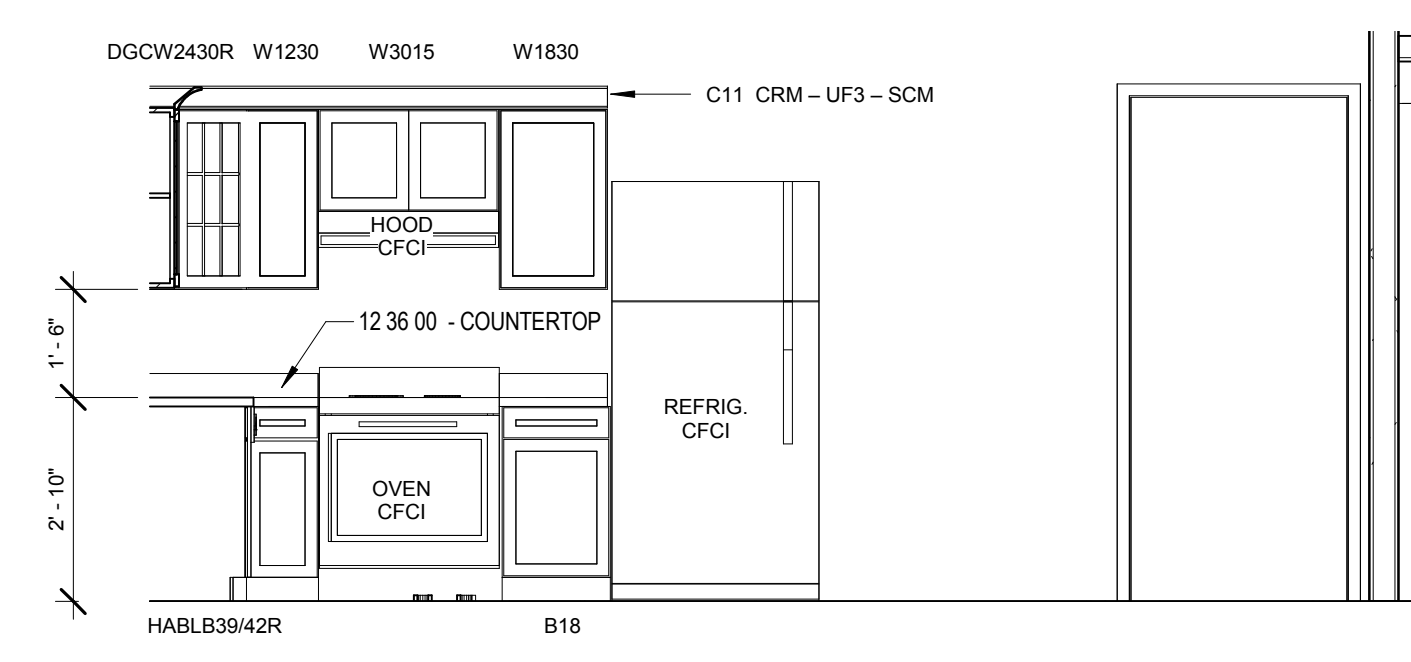
**D9** UNIT B KITCHEN ISLAND  
 A6.1 3/8" = 1'-0"



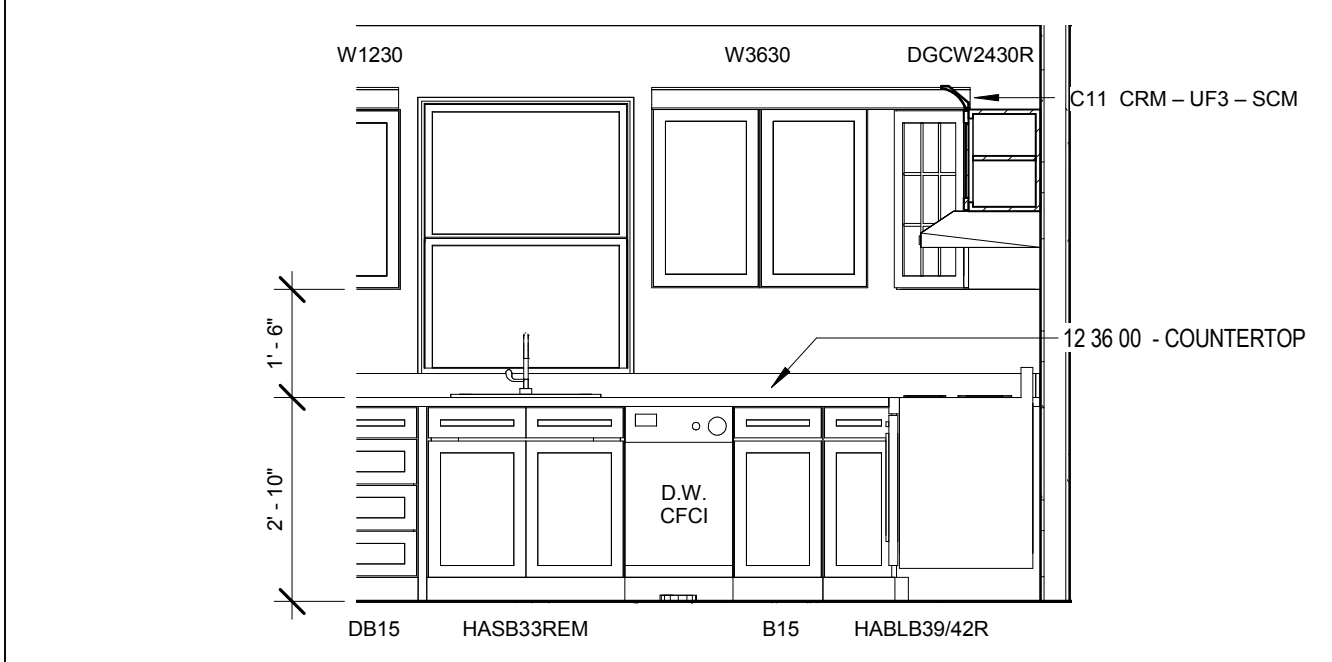
**D11** UNIT TYPE C KITCHEN ELEVATION A  
 A6.1 3/8" = 1'-0"



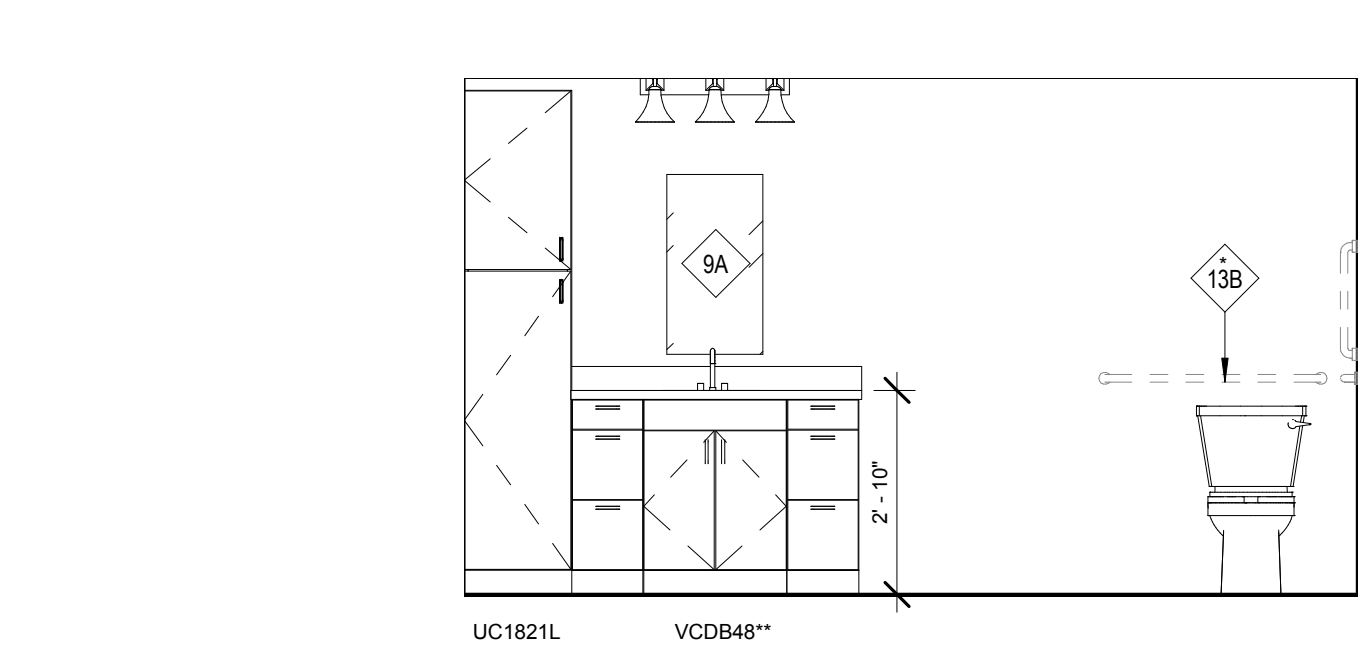
**G1** UNIT TYPE C KITCHEN ELEVATION B  
 A6.1 3/8" = 1'-0"



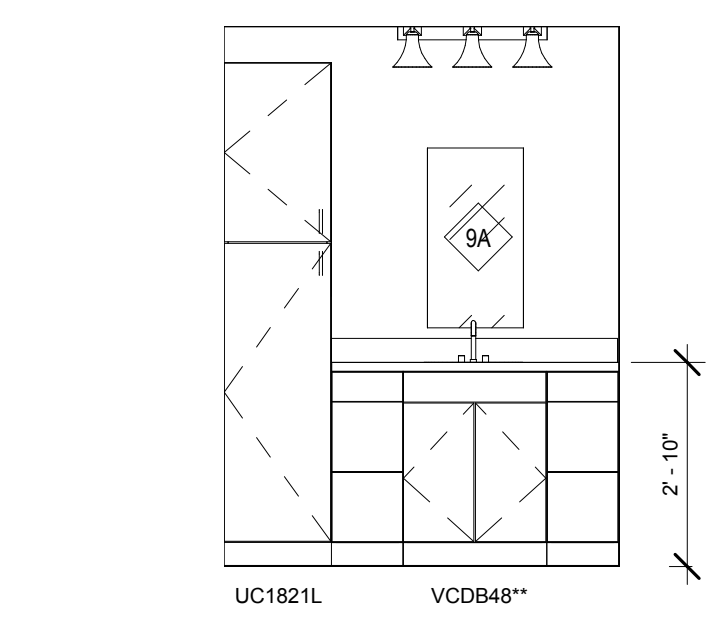
**G4** UNIT K KITCHEN ELEVATION A  
 A6.1 3/8" = 1'-0"



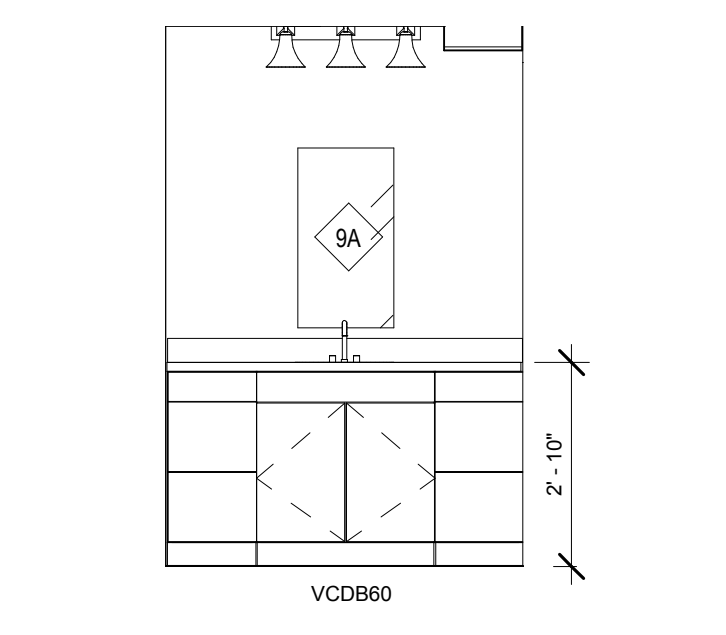
**G8** UNIT K KITCHEN ELEVATION B  
 A6.1 3/8" = 1'-0"



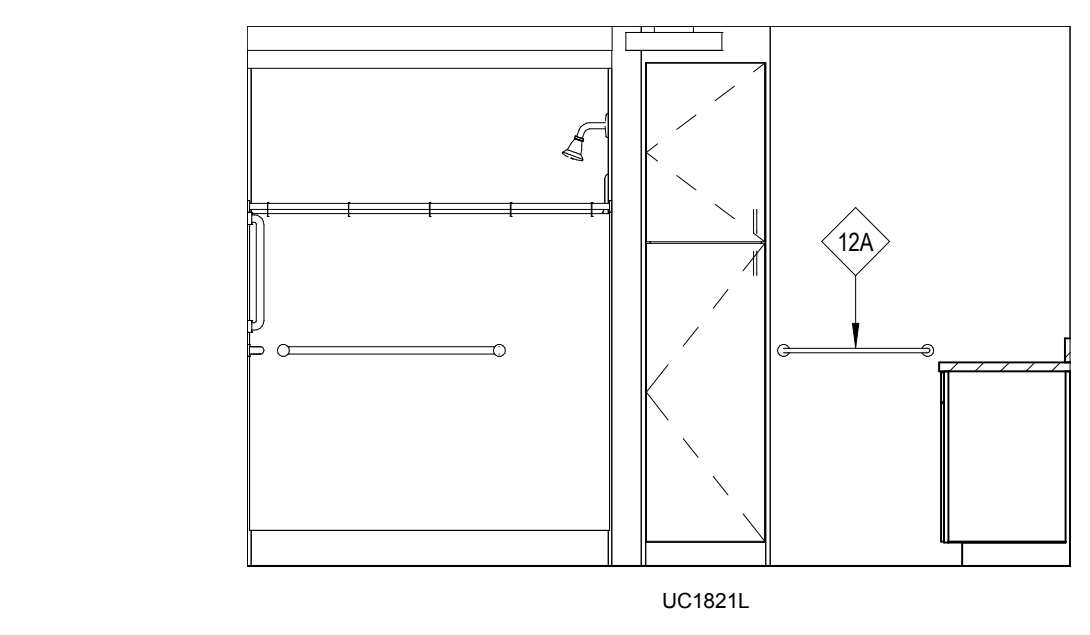
**G11** TYPICAL UNIT BATHROOM COUNTER ELEVATION  
 A6.1 3/8" = 1'-0"



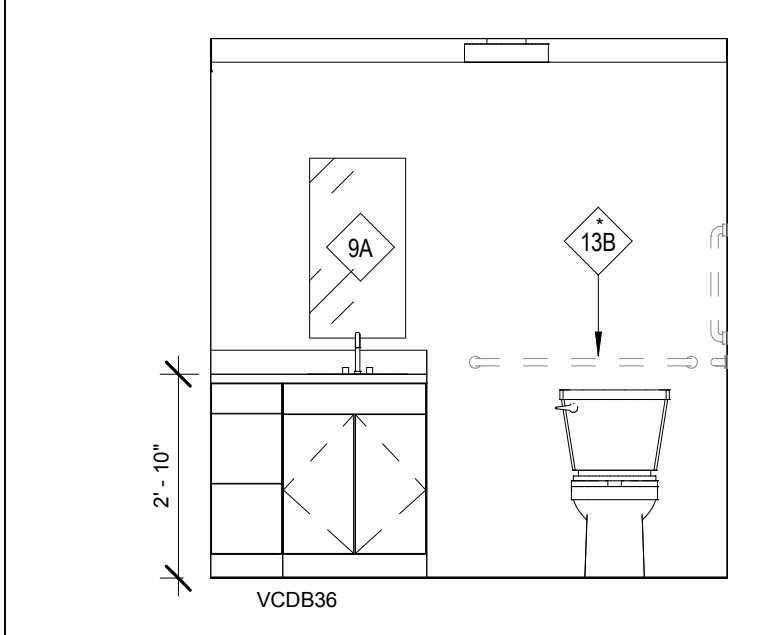
**H1** UNIT B 3/4 BATHROOM COUNTER ELEVATION  
 A6.1 3/8" = 1'-0"



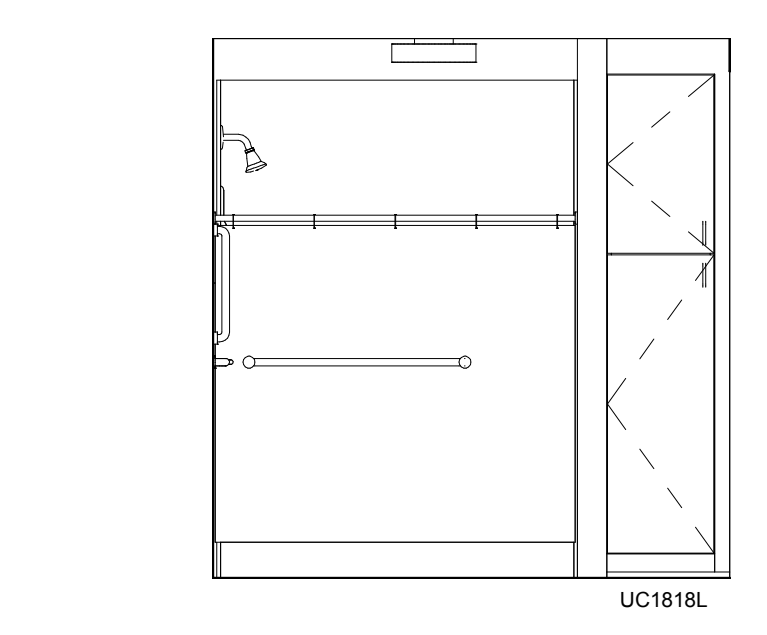
**H3** UNIT TYPE B MASTER BATH COUNTER ELEVATION  
 A6.1 3/8" = 1'-0"



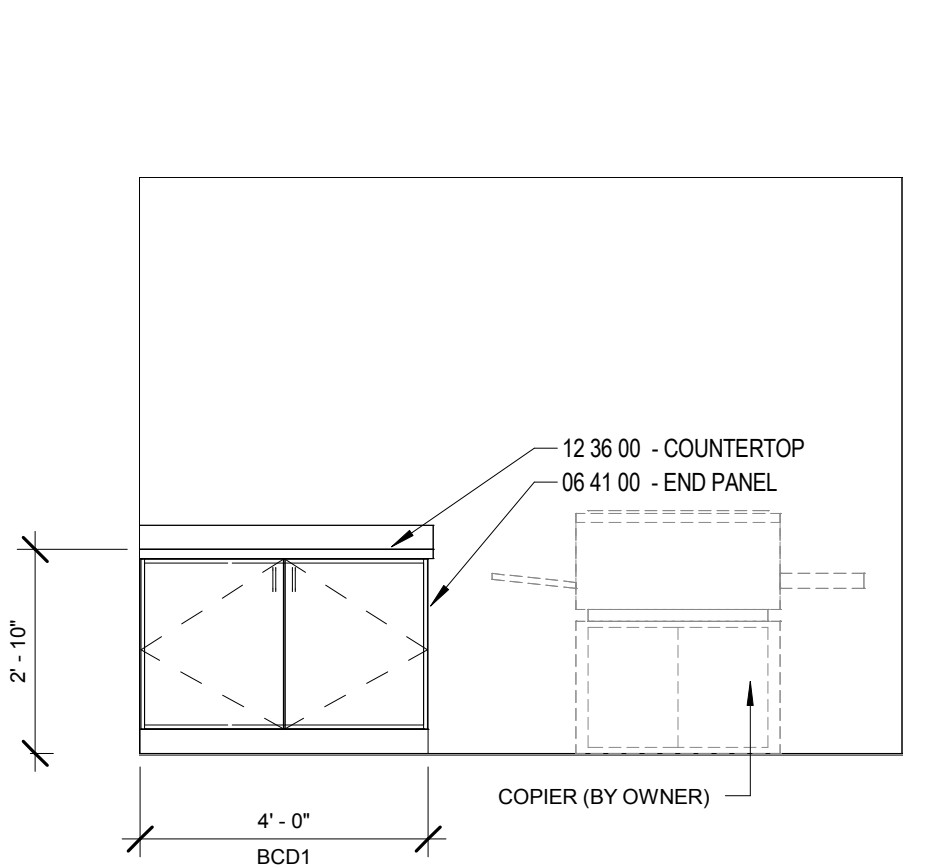
**H5** UNIT B MASTER BATH ELEVATION B  
 A6.1 3/8" = 1'-0"



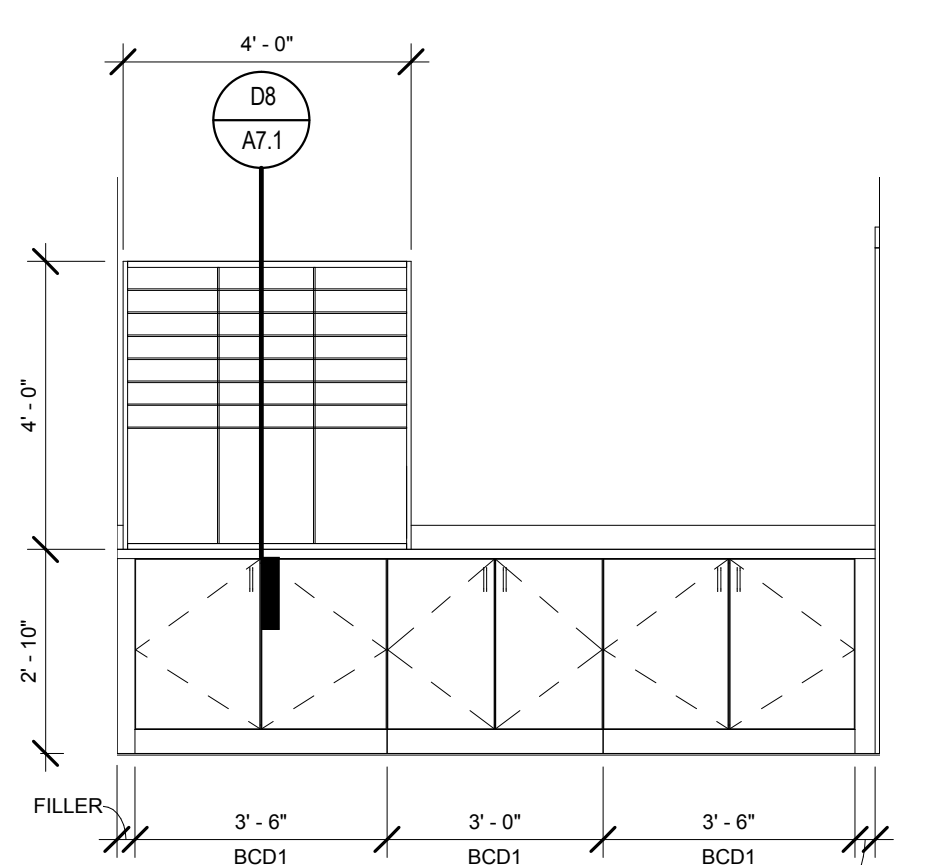
**H7** UNIT TYPE K BATHROOM COUNTER ELEVATION  
 A6.1 3/8" = 1'-0"



**H9** UNIT TYPE K BATHROOM ELEVATION B  
 A6.1 3/8" = 1'-0"



**J1** 1009H - MAIL/COPY - EAST  
 A6.1 3/8" = 1'-0"



**J3** 1009H - MAIL/COPY - WEST  
 A6.1 3/8" = 1'-0"

- CASEWORK GENERAL NOTES:**
1. ALL CONDITIONS AND DIMENSIONS SHALL BE CAREFULLY FIELD VERIFIED BY THE CONTRACTOR PRIOR TO FABRICATION.
  2. VERIFY ACTUAL SIZES OF ALL OWNER FURNISHED EQUIPMENT TO BE SET IN CASEWORK.
  3. ALL EXPOSED WALL AND BASE CABINET SIDES LEFT EXPOSED (AT OUTSIDE CORNERS, APPLIANCE RECESS, ETC.) TO HAVE FINISHED ENDS.
  4. RETURN FINISHED BACKSPASHES AT ALL SIDE CORNERS TO ALIGN WITH FRONT EDGE OF COUNTERTOP.
  5. PROVIDE CONTINUOUS BEAD OF SEALANT ALONG TOP OF ALL BACKSPASHES.
  6. TO THE EXTENT MECHANICAL AND ELECTRICAL INFORMATION IS SHOWN ON THE ARCHITECTURAL DRAWINGS, IT IS PROVIDED FOR THE CONTRACTOR'S CONVENIENCE ONLY, AND IS NOT NECESSARILY INTENDED TO REPRESENT ALL WORK REQUIRED. COORDINATE WITH MECHANICAL AND ELECTRICAL DRAWINGS FOR ALL INSTALLATION REQUIREMENTS OF THOSE TRADES WITH THE CASEWORK.
  7. PROVIDE "12 35 30 TRADITIONAL CAP" AND "12 35 30 FULL OVERLAY CROWN" AT ALL KITCHENS WALL CABINETS.
  8. SEE SPECIFICATIONS FOR ALTERNATES AND UNIT SPECIFICATIONS.
  9. WALL CABINETS TO ACCOMMODATE EXHAUST HOODS.
  10. ALL VTMIC (VANITY TRIVIEW MEDICINE CABINETS) TO BE SURFACE MOUNTED.
  11. RADIUS OUTSIDE CORNERS OF KITCHEN ISLAND TABLE 4" U.N.O.
  12. COUNTER HEIGHT 2"10" U.N.O.
  13. RETURN FINISH VALANCE END PANELS TO WALL AT EXPOSED ENDS

**CASEWORK LEGEND:**

W1530 L OR R	SIZE OF CABINET
W1530 L OR R	LOCATION OF HINGE
W1530 L OR R	TYPE OF CABINET

W#	WALL CABINET
DGOW#	SINGLE DOOR CORNER WALL CABINET W/ GLASS DOOR
SB	BASE CABINET
DB#	FOUR DRAWER BASE CABINET
HABL#	UNIVERSAL ACCESS ADAPTABLE SINGLE DOOR AND DRAWER BLIND BASE CABINETS
HASB#	UNIVERSAL ACCESS ADAPTABLE DOUBLE DOOR SINK BASE CABINET WITH REMOVABLE FRONT
HACAR#	UNIVERSAL ACCESS ADAPTABLE SINGLE DOOR DRAWER BASE CABINETS
UC#	SINGLE DOOR UTILITY CABINET
VCD#	2 1/2" DEEP DOUBLE DOOR COMBO VANITY SINK BASE CABINET
VDB#	2 1/2" DEEP DOUBLE DOOR VANITY DRAWER SINK BASE CABINET
BCB#	FINISHED INTERIOR BASE CABINET BOOKCASE
HCSB#	UNIVERSAL ACCESS SINK PLUMBING SKIRT
DWR#	END PANEL
C11 CRM - UF3 - SCM	COMBINATION MOULDING

The Park Danforth

**RENOVATIONS AND ADDITIONS**

777 Stevens Ave  
 Portland, ME 04103

NO.	DESCRIPTION	DATE
2	Addendum #2	06/25/15
3	RFI B-013	6/23/15

CONTENT:  
 INTERIOR ELEVATIONS - TYPICAL RESIDENT UNIT

DRAWN BY:	Author
PROJECT NO.:	13-059-00
DATE:	06/05/2015
REVISED:	
SCALE:	As indicated

**A6.1**

Project Phase  
**100% CONSTRUCTION DOCUMENTS**

COPYRIGHT © 2015 BY LAVALLEE|BRENSINGER PROFESSIONAL ASSOCIATION. ALL RIGHTS RESERVED. NO REPRODUCTION WITHOUT PERMISSION.