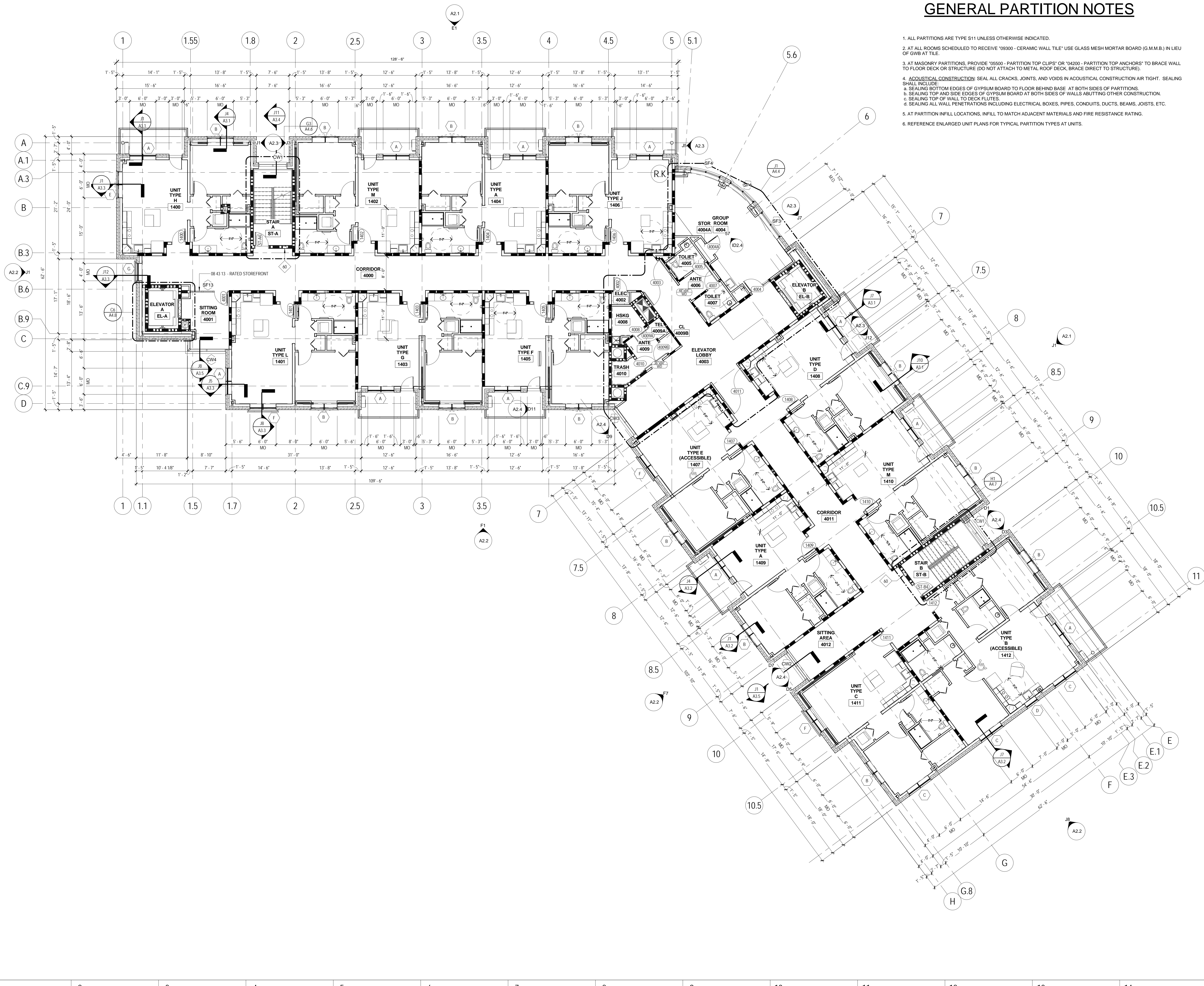
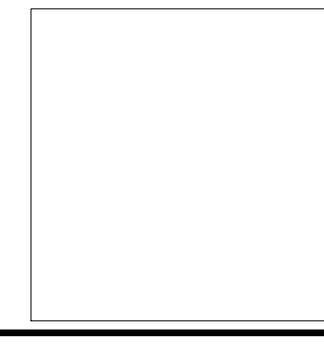
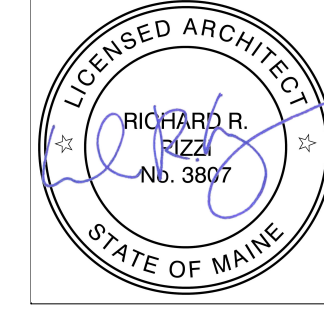


# GENERAL PARTITION NOTES

1. ALL PARTITIONS ARE TYPE S11 UNLESS OTHERWISE INDICATED.
2. AT ALL ROOMS SCHEDULED TO RECEIVE "09300 - CERAMIC WALL TILE" USE GLASS MESH MORTAR BOARD (G.M.M.B.) IN LIEU OF GWB AT TILE.
3. AT MASONRY PARTITIONS, PROVIDE "05500 - PARTITION TOP CLIPS" OR "04200 - PARTITION TOP ANCHORS" TO BRACE WALL TO FLOOR DECK OR STRUCTURE (DO NOT ATTACH TO METAL ROOF DECK, BRACE DIRECT TO STRUCTURE).
4. ACOUSTICAL CONSTRUCTION: SEAL ALL CRACKS, JOINTS, AND VOIDS IN ACOUSTICAL CONSTRUCTION AIR TIGHT. SEALING SHALL INCLUDE:
  - a. SEALING BOTTOM EDGES OF GYPSUM BOARD TO FLOOR BEHIND BASE AT BOTH SIDES OF PARTITIONS.
  - b. SEALING TOP AND SIDE EDGES OF GYPSUM BOARD AT BOTH SIDES OF WALLS ABUTTING OTHER CONSTRUCTION.
  - c. SEALING TOP OF WALL TO DECK FLUTES.
  - d. SEALING ALL WALL PENETRATIONS INCLUDING ELECTRICAL BOXES, PIPES, CONDUITS, DUCTS, BEAMS, JOISTS, ETC.
5. AT PARTITION INFILL LOCATIONS, INFILL TO MATCH ADJACENT MATERIALS AND FIRE RESISTANCE RATING.
6. REFERENCE ENLARGED UNIT PLANS FOR TYPICAL PARTITION TYPES AT UNITS.



The Park Danforth

**RENOVATIONS AND ADDITIONS**

777 Stevens Ave  
 Portland, ME 04103

NO.	DESCRIPTION	DATE



CONTENT: LEVEL 4 FLOOR PLAN - NEW BUILDING	
DRAWN BY:	SMT
PROJECT NO.:	13-059-00
DATE:	06/05/2015
REVISED:	
SCALE:	1/8" = 1' - 0"
<b>A1.4</b>	
Project Phase <b>100% CONSTRUCTION DOCUMENTS</b>	
<small>COPYRIGHT © 2015 BY LAVALLEE BRENSINGER PROFESSIONAL ASSOCIATION. ALL RIGHTS RESERVED. NO REPRODUCTION WITHOUT PERMISSION.</small>	

©/2015 3:42:20 PM C:\Projects\13-059-00\_The Park Danforth\_RTE\_06/05/2015\_SoftImmort.vst