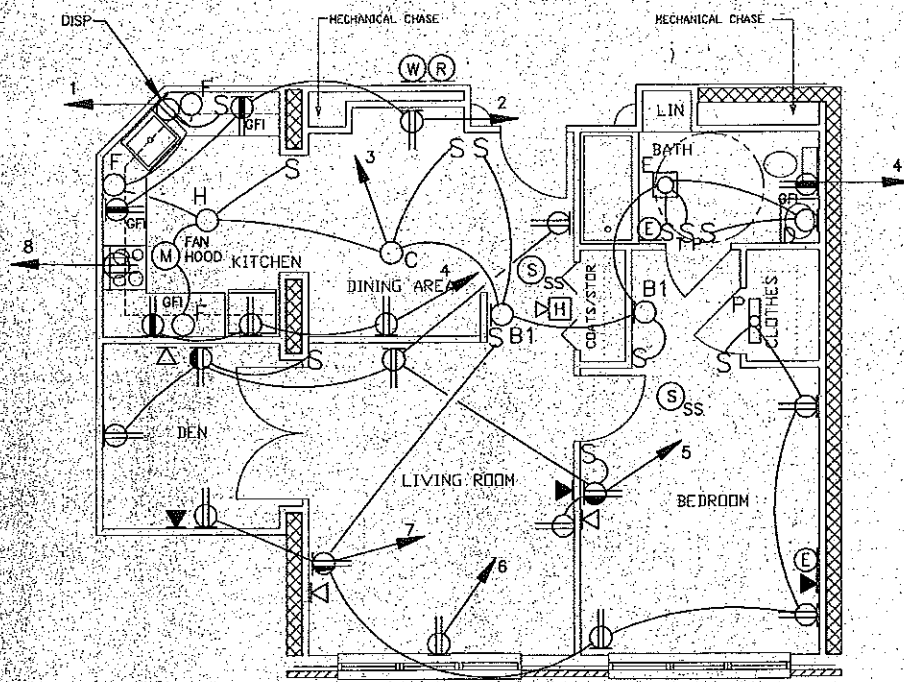
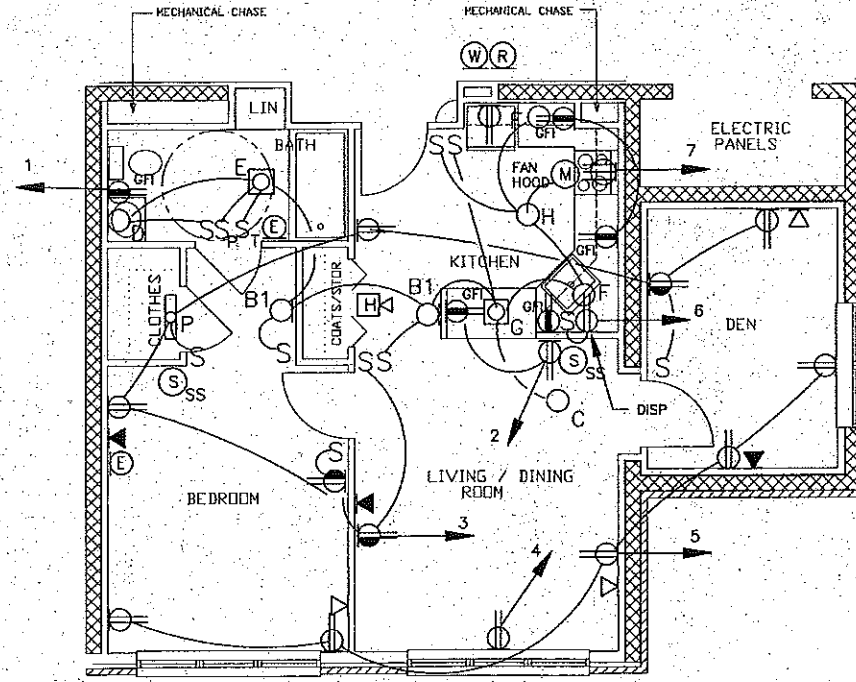


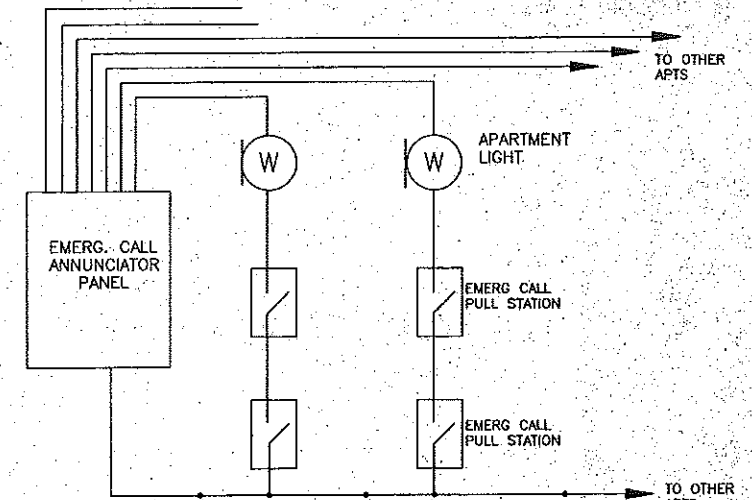
F3 Apartment Smoke Detector System



ONE BEDROOM INDEPENDENT UNIT W/ DEN AND DINING AREA
Scale: 1/4" = 1' - 0"

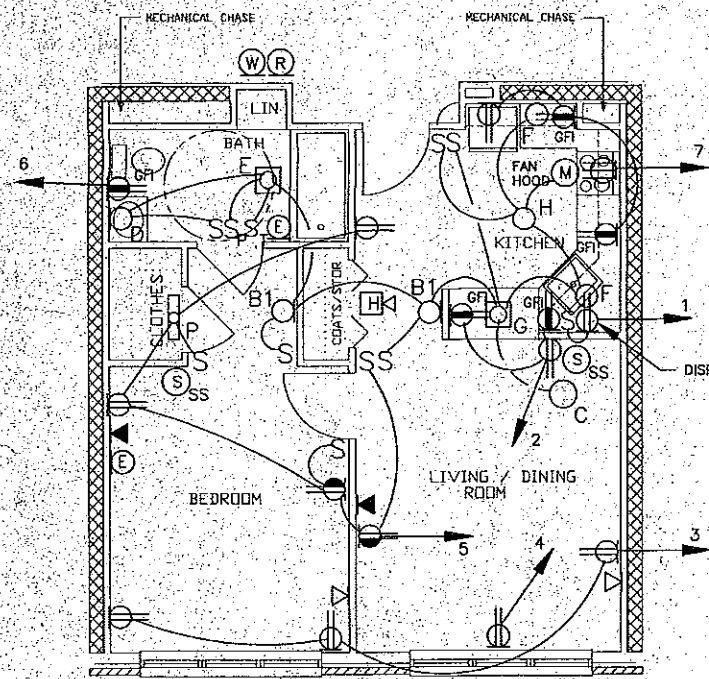


ONE BEDROOM INDEPENDENT UNIT W/ DEN
Scale: 1/4" = 1' - 0"

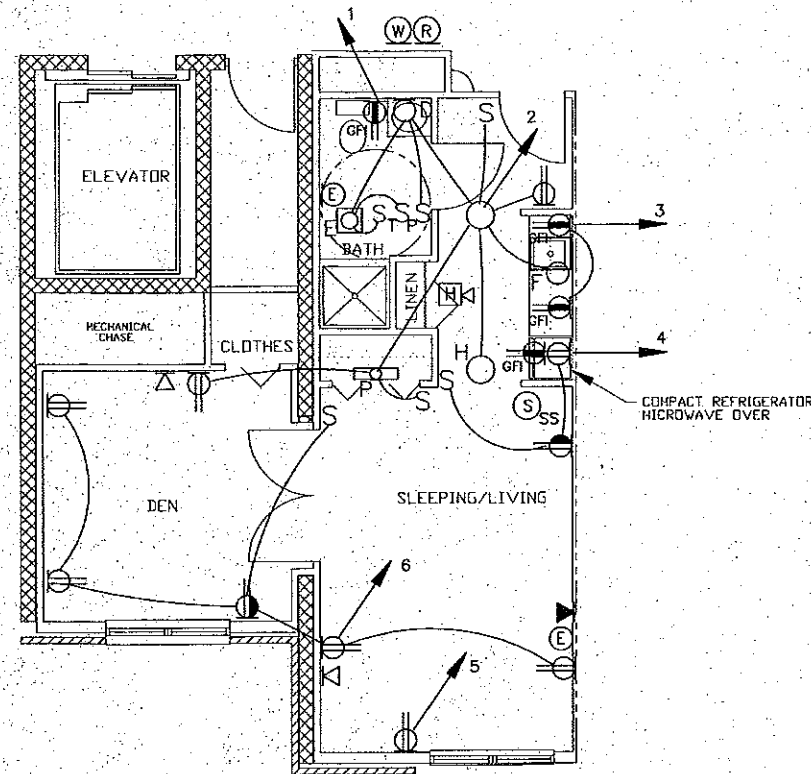


EMERGENCY CALL WIRING DIAGRAM

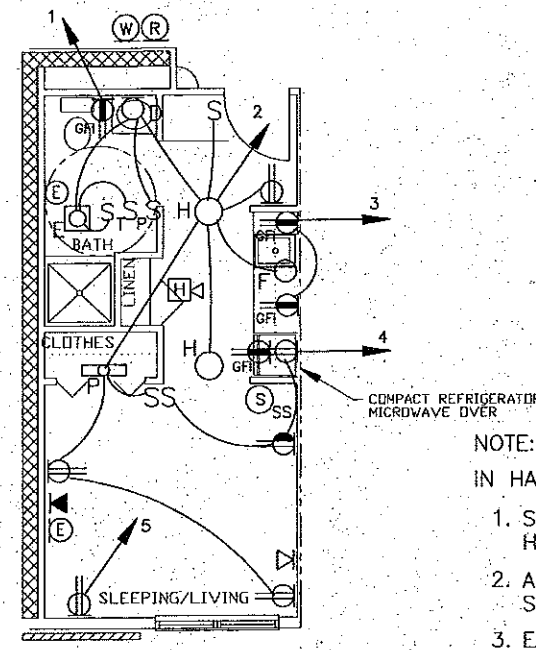
NOT TO SCALE



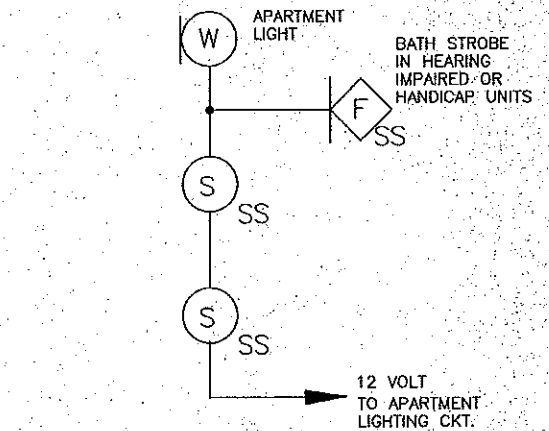
ONE BEDROOM INDEPENDENT UNIT
Scale: 1/4" = 1' - 0"



PRIVATE PAY UNIT W/ DEN
Scale: 1/4" = 1' - 0"



ASSISTED LIVING UNIT
Scale: 1/4" = 1' - 0"



APARTMENT SMOKE DETECTOR SYSTEM

NOT TO SCALE

NOTE:

IN HANDICAP AND HEARING IMPAIRED UNITS:

1. SINGLE STATION SMOKE DETECTORS SHALL HAVE STROBES WITH BATTERY BACKUP.
2. APARTMENT UNIT HORN FOR THE BLDG. SYSTEM SHALL ALSO HAVE STROBE.
3. EACH BEDROOM AND BATHROOM SHALL HAVE A BLDG. SYSTEM STROBE.
4. THE BATHROOM SHALL ALSO HAVE A STROBE CONNECTED TO THE UNIT SINGLE STATION SMOKE DETECTORS.
5. DENS SHALL HAVE A BLDG. SYSTEM STROBE AND A STROBE CONNECTED TO THE UNIT SINGLE STATION SMOKE DETECTORS.



434 CUMBERLAND AVENUE
PORTLAND, ME 04101
PHONE: (207) 774-4441
FAX: (207) 774-4016

PO Box 6555
LAGONA, NH 03247
PHONE: (603) 524-3000
FAX: (603) 527-0700

The PARK DANFORTH

777 STEVENS AVE.
PORTLAND, MAINE 04103
(207) 747-7710

ALLIED CONSTRUCTION COMPANY INC.

P.O. BOX 1396
PORTLAND, MAINE 04104
(207) 772-2888

ADDITION To The PARK DANFORTH

777 STEVENS AVE.
PORTLAND, MAINE 04103

FLEET BANK of MAINE

TWO PORTLAND SQUARE
PORTLAND, MAINE 04104-5006
(207) 874-5576

DRAWING TITLE:
UNIT PLANS

DRAWING NUMBER:

E3.1

Scale: 3/32" = 1' - 0"
DATE: NOVEMBER 14, 1991
PROJECT No.: 91431 FDA