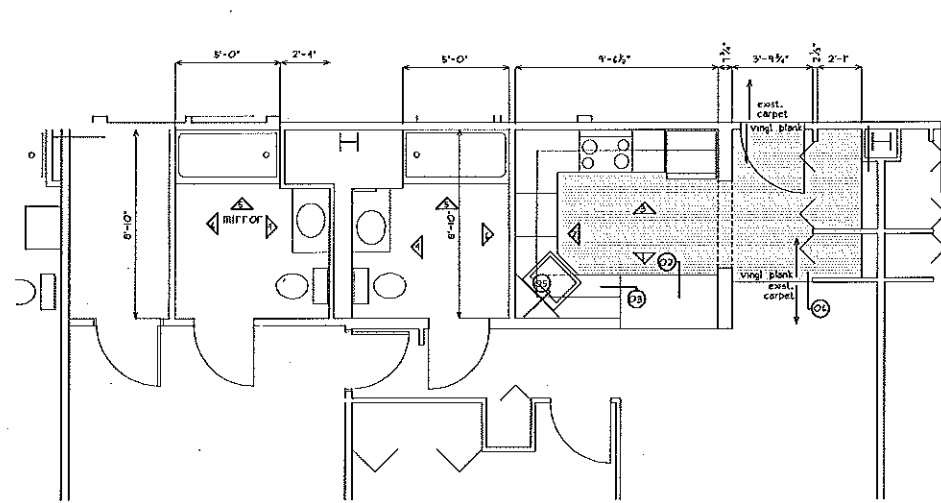
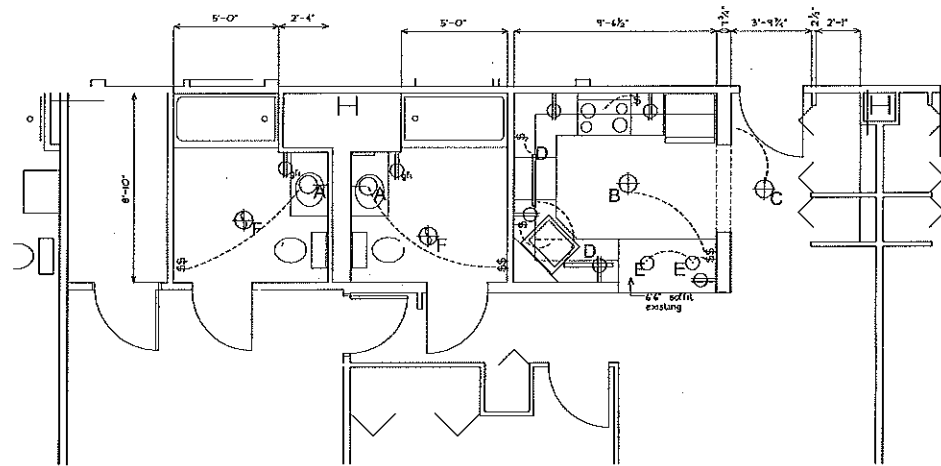


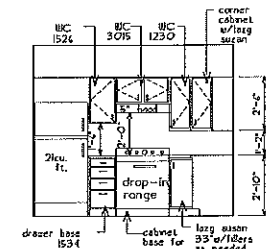
A 8. Type 5 plans with Electrical and Elevation details



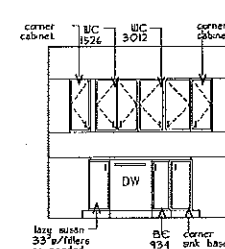
Type 5 plan
Apartment 617, 717



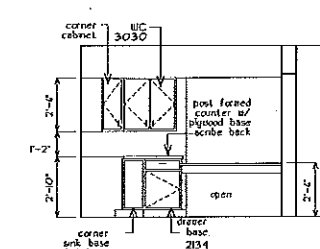
Type 5 plan
Apartment 617, 717



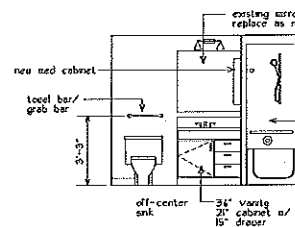
1 kitchen elevation



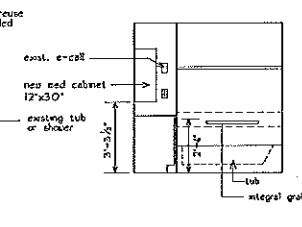
2 kitchen elevation



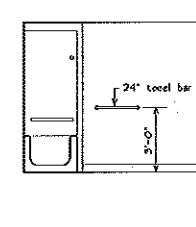
3 kitchen elevation



4 bath elevation
type 5



5 bath elevation
type 5



6 bath elevation
type 5

project name

The Park Danforth
Stevens Ave.
Portland, ME

owner

goduti/thomas architects

44 oak st.

portland, maine 04101

ph. 207-775-3184

fax 207-774-0846

legend:

- soffit above
- existing wall to be removed
- ⊕ surface mounted light fixture
- recessed light
- ⊕ GFI duplex
- wall sconce
- ⊕ duplex
- ⊕ single pole switch
- ⊕ details on A1.7

revisions

date

July 30th, 2014

sheet title

type 5 plans
electrical, elevations

scale

1/4"=1'-0"

drawn by

HS

project number

brezer

sheet number

A1.6

general notes:

1. Demo existing kitchen appliances: Refrigerator, dishwasher, stove, garbage disposal hood
2. Demo all cabinets, counter tops.
3. Demo electrical fixtures to be replaced (see elec. notes)
4. Demo bath vanity, medicine cabinet, med. tooth brush/cup/soap holders
5. Demo existing kitchen flooring.
6. Re-route any electrical affected by demo.
7. Cabinets: Merriat. Tdora in Maple w/natural finish or approved equal
8. New kitchen vinyl plank: Mannington UltraVag Plank
9. **VERIFY ALL CABINET DIMS. IN FIELD**
10. Paint all kitchen walls, entry wdg., entry closets and bathrooms.
2 coats Benjamin Moore, No-VOC paint

Kitchen appliance schedule:

- Equal Appliance substitutes must be submitted for approval.
- Refrigerator: 21cu. feet, glass shelves freezer on top
GE Energy star GTH21K5XW
- Stove: GE drop-in Elec. stove JDS20NWW
- Dishwasher: GE ADA compliant model: GLDA40PENN
- garbage disposal: Evolution Insinkerator Model: Pro Cox
- Sink: Just Manufacturing Company Model: SL-2225-A-GR (4 hole)
- sink faucet: Moen Chateau chrome two-handle bar arc kitchen faucet (4 hole)
- Hook: GE Profile JVS3H155

Bathroom:

1. continuous vanity top, off center bowl, wall ledger vanity cultured mold or approved equal
2. faucet: Moen 2 handle lavatory faucet: 8216 or approved equal
3. toilet bar: 24" per bathx locknet extra heavy duty toilet bar with concealed mounting and snap flange: B-530 24" or approved equal
4. Medicine cabinet: Rebrera II senso II 1/4" x 30" x 4" surface mount HT12DUPINLE or approved equal

electrical notes:

1. Update all kitchen outlets to 2014 Elec. Code. GFI protected, tamper proof.
2. Replace bath outlet with new GFI, tamperproof receptacle.
3. New garbage disposal, existing switching.
4. Fixture E, existing recessed to remain - new LED bulbs
5. new under counter lights, with new wall switch installed.
6. bathroom heat lamp, fan, shower light existing to remain.
7. re-route circuits that may run through removed portion of wall.
8. electrical circuits for the bedroom/living are not req'd to be updated.

Fixture Schedule:

- A progress lighting P2009-09 w/LED bulbs
- B Zero Brushed Nickel 14" Wide Flushmount LED Ceiling light Style # IC0020
- C Zero Brushed Nickel 10" Wide Flushmount LED Ceiling light Style # IC0008
- D WAC LED strip lighting, hard wired with new wall switch
- E existing recessed lights to remain w/new LED bulbs
- F replace existing bath fan with new NuTone Model QTH30E verify duct location before ordering