

A7. Type 3 and 4 plans with Electrical and Elevation details

general notes:

1. Demo existing kitchen appliances: Refrigerator, dishwasher, stove, garbage disposal hood
2. Demo all cabinets, counter tops.
3. Demo electrical fixtures to be replaced (see elec. notes)
4. Demo bath vanity, medicine cabinet, med. tooth brush/cup/soap holders
5. Demo existing kitchen flooring.
6. Re-route any electrical affected by demo.
7. Cabinets: Merrick, Tokon in Maple w/natural finish or approved equal
8. New kitchen vinyl plank: Hanington Walking Plank
9. **VERIFY ALL CABINET DIMS. IN FIELD**
10. Paint all kitchen walls, entry closets and bathrooms. 2 coats Benjamin Moore, No-VOC paint

Kitchen appliance schedule:

Equal Appliance substitutes must be submitted for approval.

Refrigerator: Zircu. feet, glass shelves freezer on top
GE Energy star GTH2K8XWU

Stove: GE drop-in Elec. stove JDS2DNNH

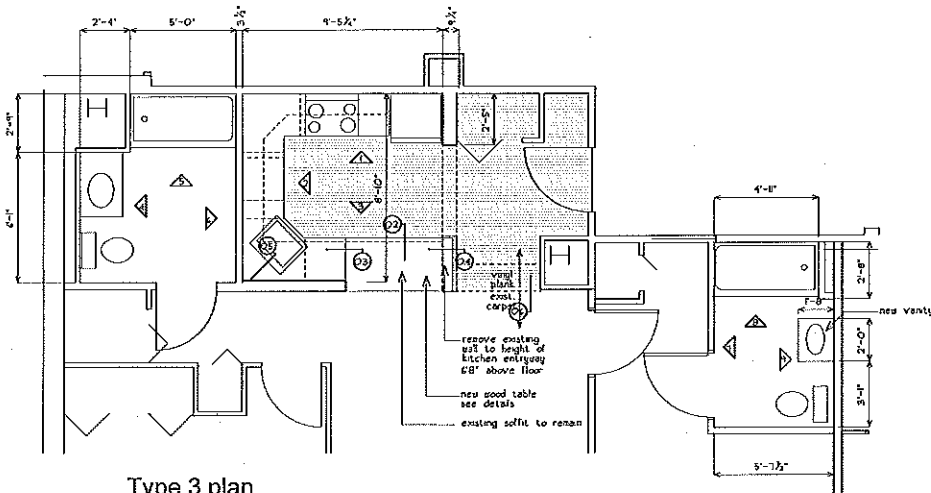
Dishwasher: GE ADA compliant model: GLDA60P8W

garbage disposal: Evolution Insinkerator Model: Pro Com

Sink: Just Manufacturing Company Model: SL-2225-A-GR (4 hole)

sink faucets: Moen Chelsea chrome two-handle low arc kitchen faucet (4 hole)

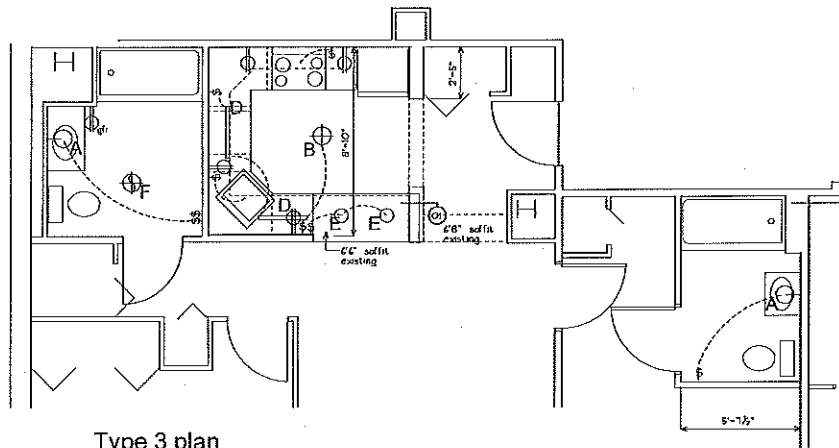
Hood: GE Profile JVS34H5



Type 3 plan
Apartment 613, 713

Bathroom:

1. continuous vanity top, off center bowl, soft leader vanity, cultured model or approved equal
2. faucet: Moen 2 handle lavatory faucet: 826 or approved equal
3. toilet brush/holder, bidet, extra heavy duty toilet bars with concealed mounting and snap flange: 5-550 24" or approved equal
4. Medicine cabinet: Ruben H series II 1/4" x 30" x 4" surface mount M712DFHLE or approved equal



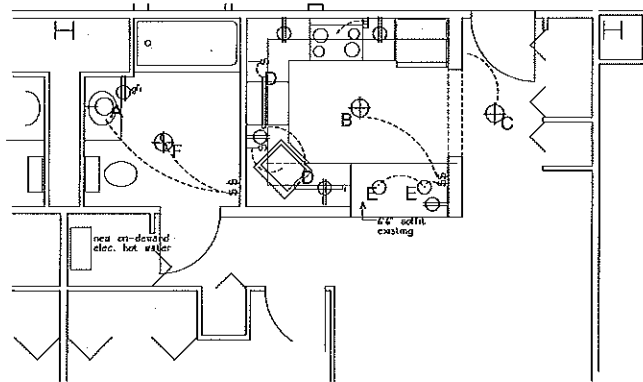
Type 3 plan
Apartment 613, 713

electrical notes:

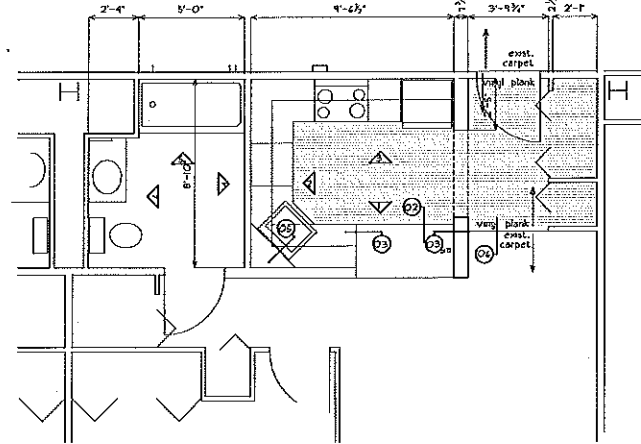
1. Update all kitchen outlets to 2014 Elec. Code. GFI protected, tamper proof.
2. Replace bath outlet with new GFI, tamperproof receptacle.
3. New garbage disposal, existing switching.
4. Fixture E, existing recessed to remain, new LED bulbs
5. new under counter lights, with new wall switch installed.
6. bathroom heat lamp, fan, shower light existing to remain.
7. re-route circuits that run through removed portion of wall.
8. electrical circuits for the bedroom/living are not req'd to be updated.

Fixture Schedule:

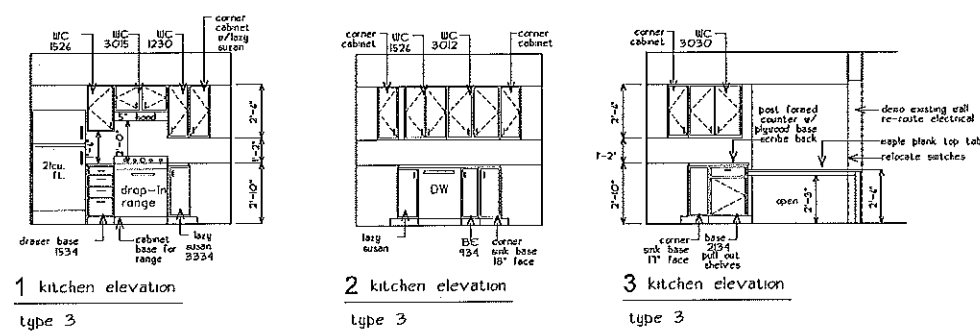
- A progress lighting P3007-09 w/LED bulbs
- B Zero Brushed Nickel 14" Wide Flushmount LED Ceiling light Style # IC020
- C Zero Brushed Nickel 10" Wide Flushmount LED Ceiling light Style # IC008
- D MAC LED strip lighting, hard wired with new wall switch
- E existing recessed lights to remain w/new LED bulbs
- F replace existing bath fan with new NuTone Model QTH30E verify duct location before ordering



Type 4 electrical plan
Apartment 317, 417, 517



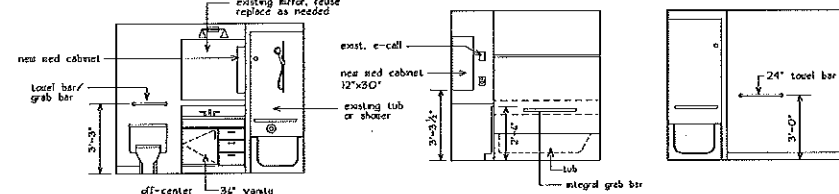
Type 4 plan
Apartment 317, 417, 517



1 kitchen elevation
type 3

2 kitchen elevation
type 3

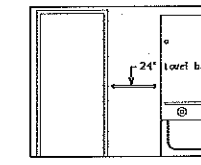
3 kitchen elevation
type 3



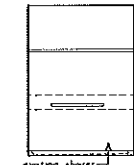
4 bath elevation
type 3

5 bath elevation
type 3

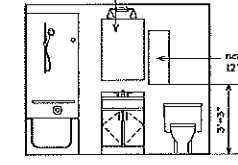
6 bath elevation
type 3



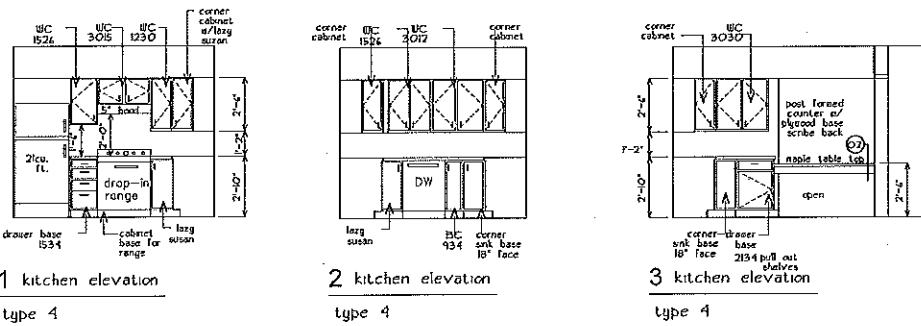
7 bath elevation
type 3



8 bath elevation
type 3



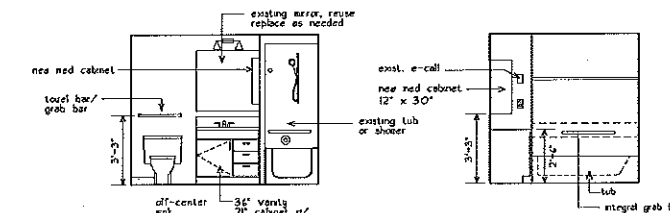
9 bath elevation
type 3



1 kitchen elevation
type 4

2 kitchen elevation
type 4

3 kitchen elevation
type 4



4 bath elevation
type 4

5 bath elevation
type 4

6 bath elevation
type 4

project name

The Park Danforth
Stevens Ave.
Portland, ME

owner

goduti/thomas architects

44 oak st.

portland, maine 04101

ph. 207-775-3184

fax 207-774-0846

legend:

- soffit above
- existing wall to be removed
- surface mounted light fixture
- recessed light
- GFI duplex
- wall sconce
- duplex
- single pole switch
- details on A1.1

revisions

date

july 30th, 2014

sheet title

type 3, type 4 plans
electrical, elevations

scale

1/4"=1'-0"

drawn by

HS

project number

breer

sheet number

A1.5