

A6. Type 1 and 2 plans with Electrical and Elevation details

project name

The Park Danforth
Stevens Ave.
Portland, ME

owner

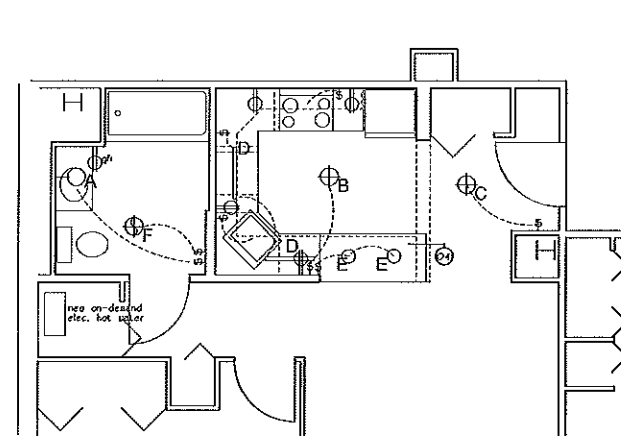
goduti/thomas architects
44 oak st.
portland, maine 04101
ph. 207-775-3184
fax 207-774-0846

- legend:
- soffit above
 - existing wall to be removed
 - ⊕ surface mounted light fixture
 - recessed light
 - ⊕ GFI duplex
 - wall sconce
 - ⊕ duplex
 - ⊕ single pole switch
 - ⊕ details on A1.1

revisions
date
july 30th, 2014
sheet title

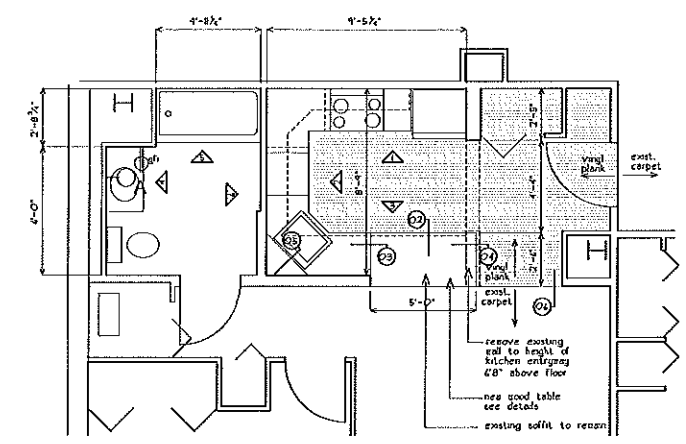
type 1, type 2 plans
electrical, elevations

scale
1/4"=1'-0"
drawn by
HS
project number
sheet number



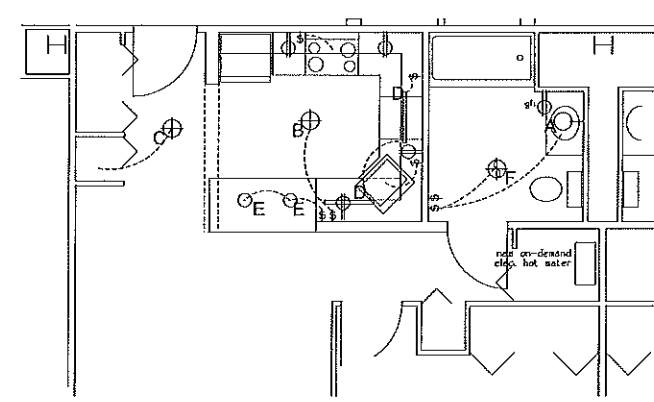
Type 1 electrical plan
Apartment 313, 413, 513

- electrical notes:**
- Update all kitchen outlets to 20M Elec Code. GFI protected, tamper proof.
 - Replace bath outlet with new GFI, tamperproof receptacle.
 - New garbage disposal, existing switching.
 - Fixture E, existing recessed to remain - new LED bulbs.
 - new under counter lights, with new wall switch installed.
 - bathroom heat lamp, fan, shower light existing to remain.
 - re-route circuits that run through removed portion of wall.
 - electrical circuits for the bedroom/living are not req'd to be updated.
- Fixture Schedule:**
- A recess lighting P2009-01 w/LED bulbs
 - B Zero Brushed Nickel 14" Wide Flushmount LED Ceiling Light Style # IC020
 - C Zero Brushed Nickel 10" Wide Flushmount LED Ceiling Light Style # IC008
 - D WAC LED strip lighting, hard wired with new wall switch
 - E existing recessed lights to remain w/new LED bulbs
 - F replace existing bath fan with new NuTone Model OTH30E verify duct location before ordering

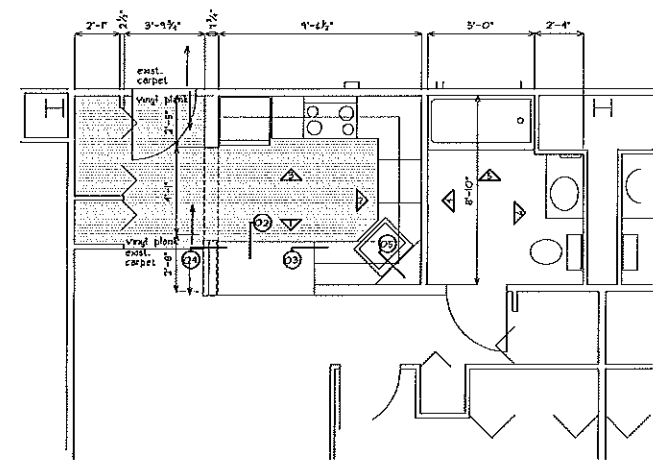


Type 1 plan
Apartment 313, 413, 513

- general notes:**
- Demolish existing kitchen appliances: Refrigerator, dishwasher, stove, garbage disposal, hood.
 - Demolish all cabinets, counter tops.
 - Demolish electrical fixtures to be replaced (see elec. notes).
 - Demolish bath vanity, medicine cabinet, misc. tooth brush/cup/soap holders.
 - Demolish existing kitchen flooring.
 - Re-route any electrical affected by demo.
 - Cabinets: Merritt Tolar in Maple w/natural finish or approved equal.
 - New kitchen vinyl plank: Huntington Walkway Plank.
 - VERIFY ALL CABINET DIMS. IN FIELD**
 - Paint all kitchen walls, entry closets and bathrooms. 2 coats Benjamin Moore, Nav-VOC paint.
- Kitchen appliance schedule:**
Equal Appliance substitutes must be submitted for approval.
- Refrigerator: Zico. feet, glass shelves freezer on top
GE Energy star GTH2K5X100
- Stove: GE drop-in Elec. stove JDS2DN00
- Dishwasher: GE ADA compliant model: GLDA40P0U0
- garbage disposal: Evolution Inserter Model: Pro Cam
- Sink: Just Manufacturing Company Model: SL-2225-A-GR (4 hole)
sink faucet: Moen Chateau chrome two-handle low arc kitchen faucet (4 hole)
- Hood: GE Profile JVS34H55
- Bathroom:**
- contourless vanity tub, off center wall
soffit leader vanity, cultured model or approved equal
 - faucet: Moen 2 handle lavatory faucet: 8216 or approved equal
 - toilet bidet per bath; bidet extra heavy duty toilet base with concealed mounting and snap flange: B-530 24" or approved equal
 - Medicine cabinet: Roborn II senso II 1/4" x 30" x 6" surface mount MT00DFRLE or approved equal



Type 2 electrical plan
Apartment 314, 315, 316,
414, 415, 416
514, 515, 516
614, 616, 714, 716



Type 2 plan
Apartment 314, 315, 316,
414, 415, 416
514, 515, 516
614, 616, 714, 716

