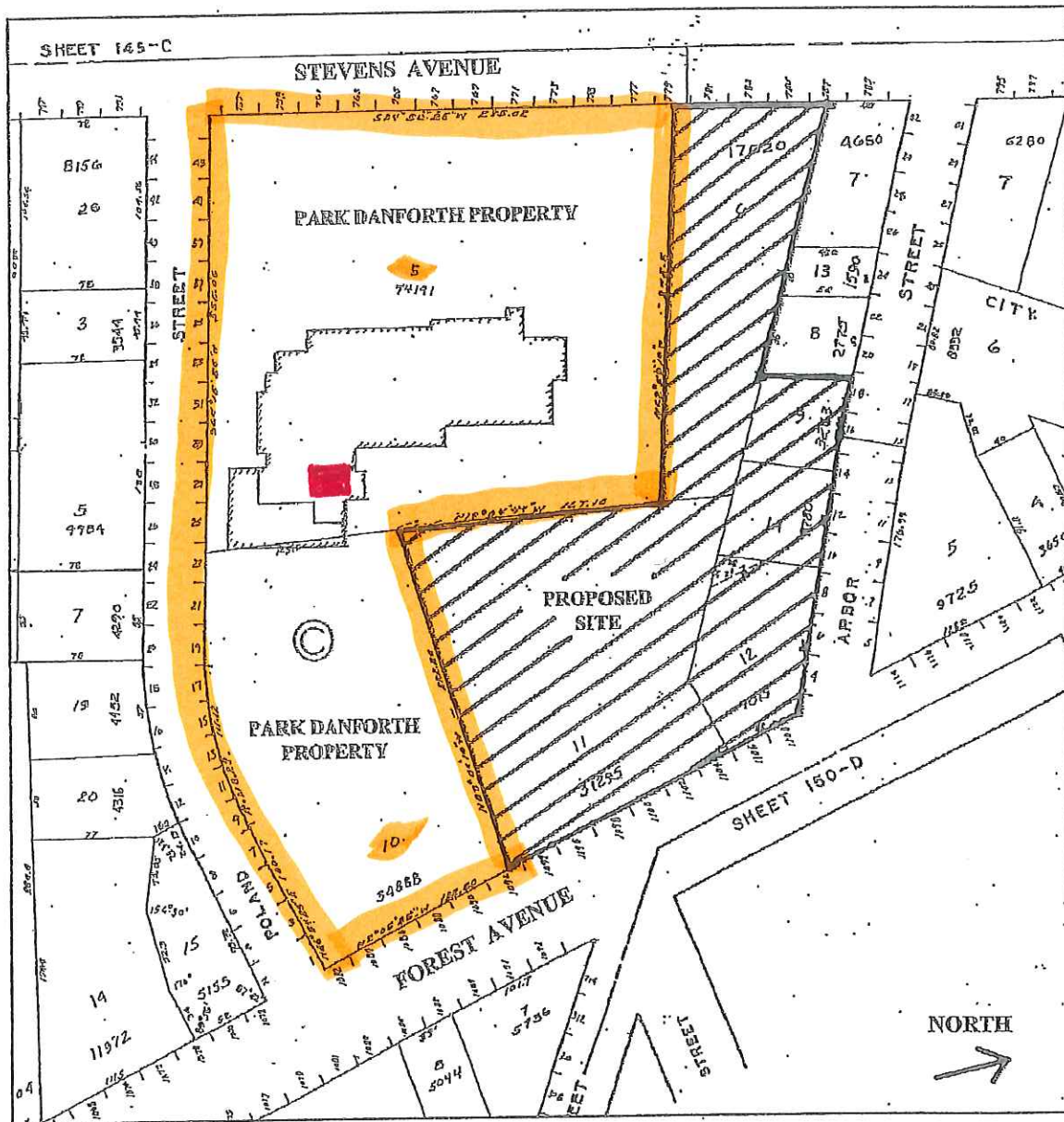



C.I Site Plan of The Park Danforth

Property Description

The overall project site is comprised of five lots totaling approximately 1.4± unsurveyed acres. The five lots are identified by the City of Portland Assessor's Plan as **Tax Map 146**, Lots 6, 9, 11, 12 and 14.



 Tax Map 146
Site of renovation of cooler/freezer