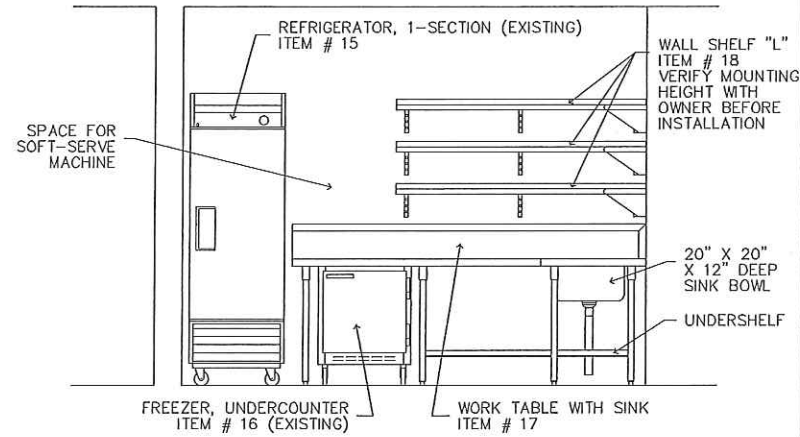
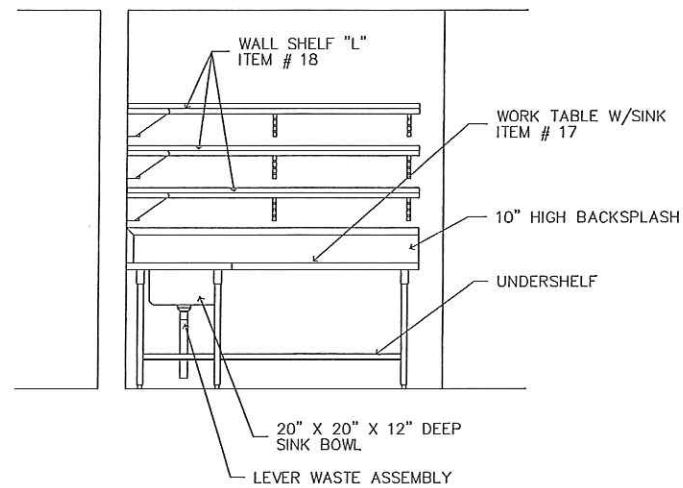


A3 Proposed Floor Plan (Sheet FS-1)

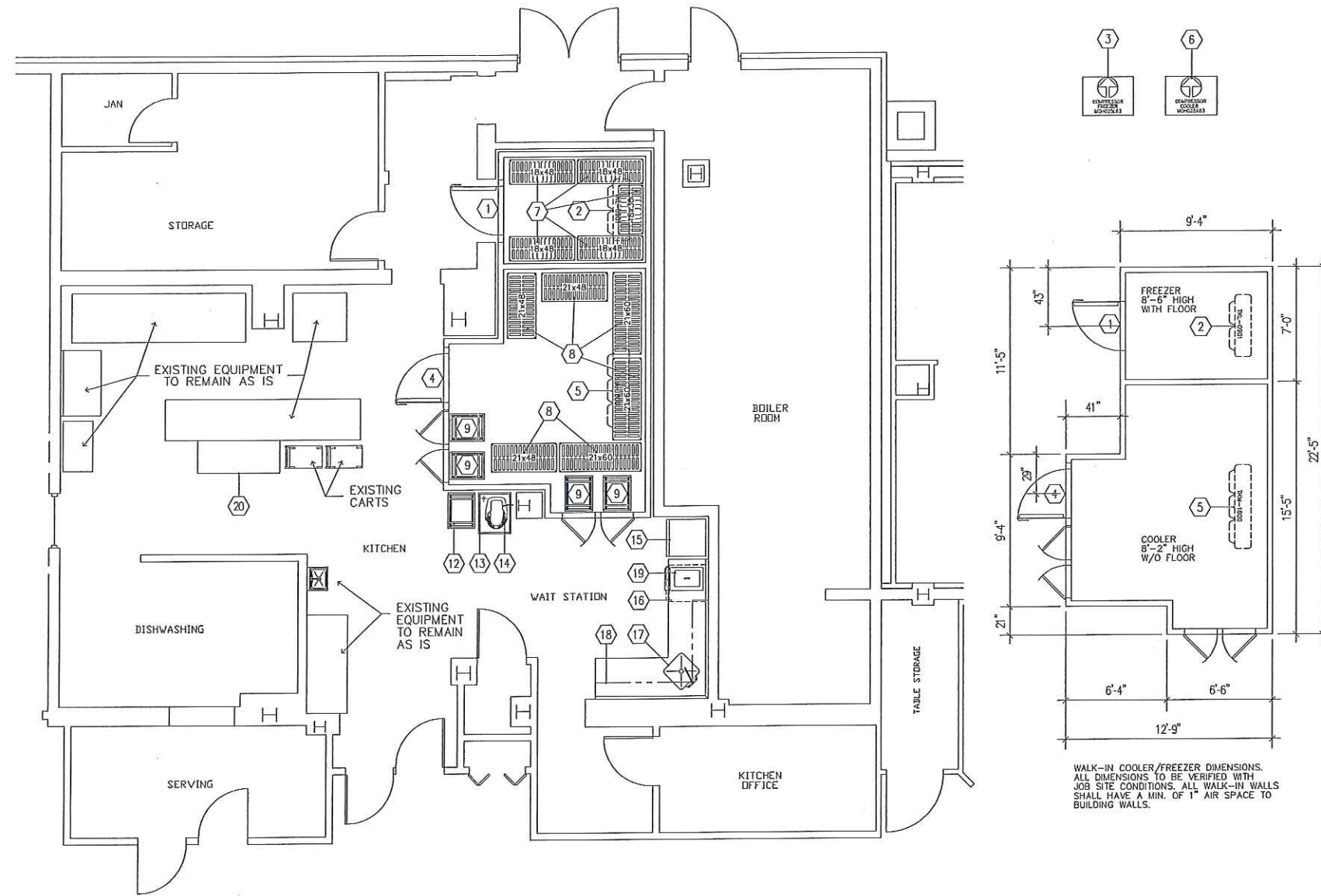
FINAL DESIGN



WAIT STATION, EAST WALL ELEVATION
SCALE - 1/2" = 1' - 0"



WAIT STATION, SOUTH WALL ELEVATION
SCALE - 1/2" = 1' - 0"



WALK-IN COOLER/FREEZER DIMENSIONS.
ALL DIMENSIONS TO BE VERIFIED WITH
JOB SITE CONDITIONS. ALL WALK-IN WALLS
SHALL HAVE A MIN. OF 1" AIR SPACE TO
BUILDING WALLS.

FOODSERVICE EQUIPMENT SCHEDULE

MK.	QTY	DESCRIPTION	ELECTRICAL			VOLTS	PHASE	DIRECT	PLUG	WATER		WASTE		GAS		STEAM		MANUFACTURER	MODEL	REMARKS
			FLAMPS	KW	HP					COLD	HOT	DIRECT	INDIRECT	SIZE	MBTUH	LBS/HR	PSIG			
1	1	WALK-IN FREEZER	4.0		120	1	X											THERMO-KOOL	CUSTOM	
2	1	EVAPORATOR COIL, FREEZER	4.3	05	115	1	X					3/4"						THERMO-KOOL	TKL-0901	
			88	1.9	208	1	X													
3	1	COMPRESSOR, FREEZER	125		2-1/2	208	3	X										THERMO-KOOL	MOH025L63	
4	1	WALK-IN COOLER	4.0		120	1	X											THERMO-KOOL	CUSTOM	
5	1	EVAPORATOR COIL, COOLER	27	02	115	1	X					3/4"						THERMO-KOOL	TKM-1800	
6	1	COMPRESSOR, COOLER	11.3		2-1/2	208	3	X										THERMO-KOOL	MOH025X63	
7	5	SHELVING UNIT																CAMBRO	ELEMENTS SERIES	
8	7	SHELVING UNIT																CAMBRO	ELEMENTS SERIES	
9	4	SHEET PAN RACK																NEW AGE	4339	WITH 6" HIGH LEGS WITH FLANGED FEET
10	-	- SPARE NUMBER -																		
11	-	- SPARE NUMBER -																		
12	1	SHEET PAN RACK (EXISTING)																UNKNOWN	UNKNOWN	
13	1	MIXER STAND																ADVANCE/TABCO	MX-SS-302	WITH CASTERS, TWO LOCKING
14	1	MIXER, 20-QUART (EXISTING)	80		1/2	115	1	X										HOBART	A-200	
15	1	REFRIGERATOR, 1-SECTION (EXISTING)	76		1/3	115	1	X										TRUE	T-23	
16	1	FREEZER, UNDERCOUNTER (EXISTING)	60		1/4	115	1	X										BEVERAGE AIR	UCF27A	
17	1	WORK TABLE WITH SINK								1/2"	1/2"	2'						FABRICATED	CUSTOM	
18	3	WALL SHELF "L"																FABRICATED	CUSTOM	
19	1	SOFT SERVE MACHINE	150			208	3	X										SANISERV	401	
20	1	WORK COUNTER																ADVANCE/TABCO	EB-SS-245-M	

Foodservice Consultant:
TJM Consulting, Inc.
273 Main Street, Suite 5
Yarmouth, Maine 04096
(207) 847-3337 tjmconsulting@maine.t.com

Owner:
The Park Danforth
777 Stevens Avenue
Portland, Maine 04103

Project:
Walk-In Cooler/Freezer Renovation
Base Bid

Drawing: Foodservice Equipment
Plan and Schedule
Scale: 1/4"=1'-0"
Date: Jan. 10, 2013

SHEET:
FS-1