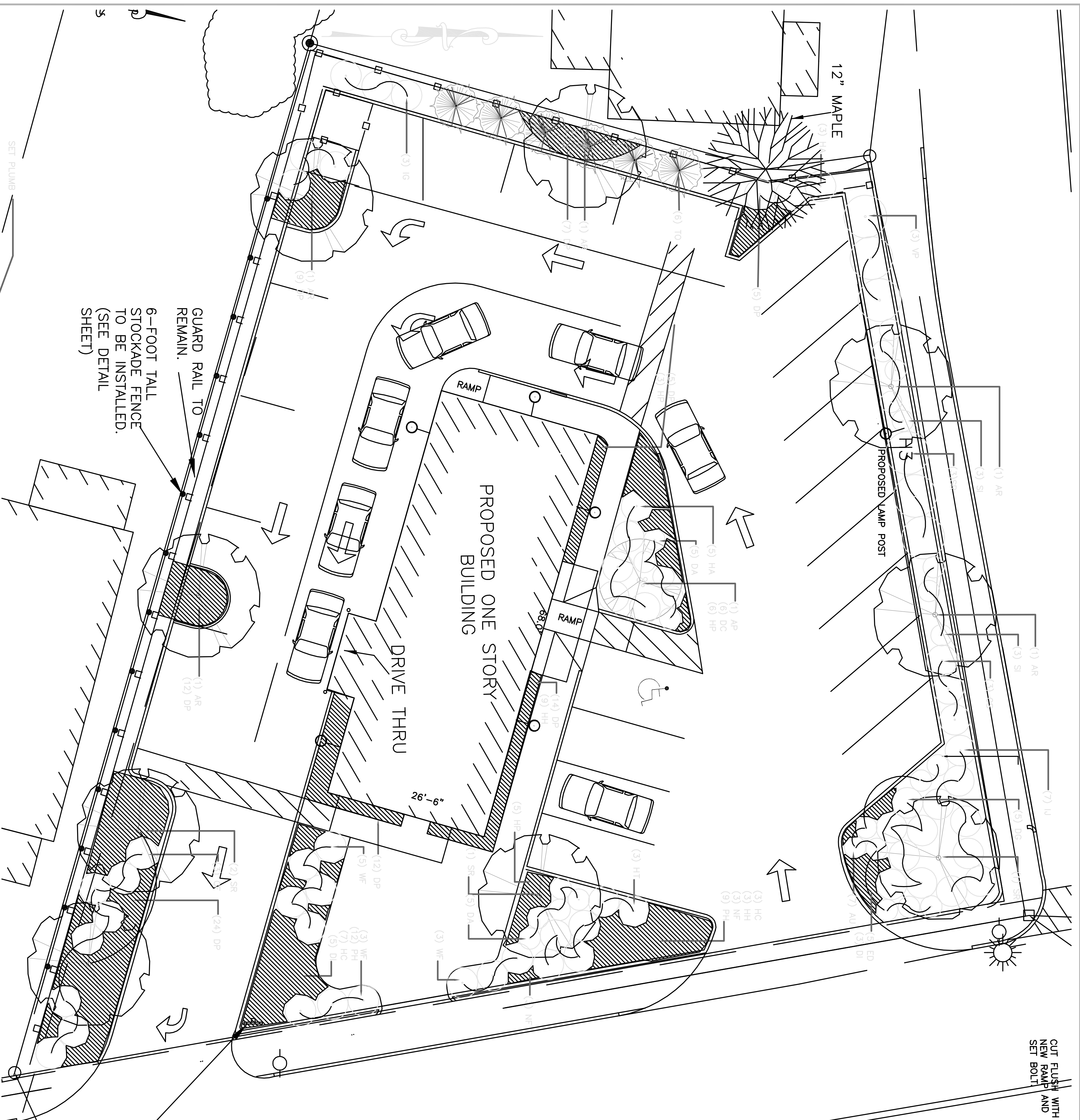


CUT FLUSH WITH
NEW RAMP AND
SET BOLT



Planting Notes:

1. All materials shall conform to the guidelines established by the American Association of Nurserymen.
2. All plants shall be balled and wrapped or container-grown as specified. No container-grown stock will be accepted if it is root-bound. All root wrapping material made of synthetics or plastics shall be removed at the time of planting. All metal cages to be cut away and removed from the root ball after setting the tree or shrub in the planting hole.
3. All plants subject to approval by landscape architect. All substitutions must be submitted for approval by landscape architect prior to ordering or delivery of plant material on site. Landscape architect reserves the right to reject any plantings that do not conform to the drawings or specifications outlined herein.
4. Finish grade of plantings shall match adjacent finish grades unless otherwise noted on drawings or directed and/or approved by the landscape architect.
5. No plant shall be put into the ground before rough grading has been finished and approved by the landscape architect or owner's representative.
6. All plants shall be set plumb unless otherwise specified.
7. All plantings shall be topped with a minimum of 4" of fresh mulch. Mulch shall be aged pine bark, partially decomposed, free of deleterious material, with wood chips no thicker than 1/2".
8. All plants shall be watered thoroughly twice during the first 24-hour period after planting. All plants shall be watered as required thereafter to ensure survival and growth through the first growing season.
9. Contractor shall warrantee all plantings in kind for one year.

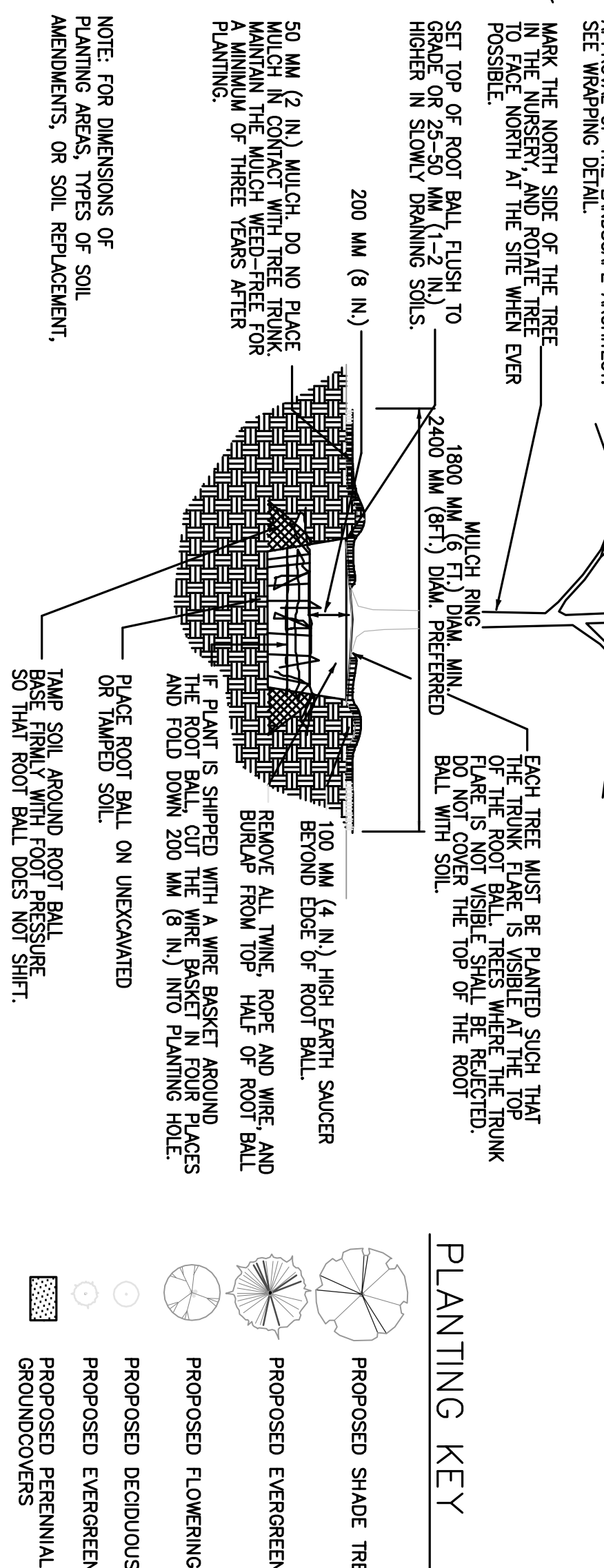
SYM. QTY.	BOTANICAL NAME	COMMON NAME	SIZE/COND.	SPACING/NOTES
TREES				
AP 1	Acer p. 'White Tigris'	White Tigris Maple	8'-10' ht.	As shown
AR 3	Acer r. 'Red Sunset'	Red Sunset Maple	2.5" cal.	As shown
SR 4	Syringa reticulata	Japanese Lilac	8'-10' ht.	Cump form
SHRUBS				
AU 9	Arctostaphylos uva-ursi	Bearberry	#2 pot	As shown
CF 11	Cornus s. 'Farrow'	Arctic Fire Dogwood	#3 pot	As shown
DA 10	Daphne 'Carol Mackie'	Carol Mackie Daphne	#2 pot	As shown
DG 5	Deutzia g. 'Nikko'	Nikko Deutzia	#2 pot	As shown
HA 3	Hydrangea a. 'Samantha'	Samantha Hydrangea	#3 pot	As shown
HS 3	Hydrangea s. 'Middoboshi-Tamari'	Mountain Hydrangea	#3 pot	As shown
IG 7	Ilex glabra 'Compacta'	Compact Inkberry	#3 pot	As shown
IV 3	Ilex virginica 'Little Henry'	Sweetspire	#3 pot	As shown
SI 6	Stephanandra incisi 'Crisp'	Cutleaf Stephanandra	#3 pot	As shown
SP 3	Syringa x. 'Red Pixie'	Red Pixie Lilac	#3 pot	As shown
VP 3	Viburnum p. 'Shosti'	Shasta Viburnum	5'-6' ht.	As shown
WF 11	Weigela f. 'Alexandra'	White and Roses Weigela	#5 pot	As shown
PERENNIALS/GROUNDCOVERS				
DP 67	Demnsteothia punctiloba	Hoy-scented Fern	BR	30" o.c
DI 14	Dianthus 'Cheddar Pinks'	Cheddar Pinks Dianthus	1 qt.	12" oc
ED 5	Euphorbia dulcis 'Chameleon'	Chameleon Spurge	#2 pot	As shown
HP 16	Heuchera 'Palace Purple'	Purple-leaved Coralbells	1 qt.	18" oc
HC 24	Hemerocallis 'Catherine Woodbury'	Catherine Woodbury Daylily	1 qt.	24" oc
HA 12	Hemerocallis 'Happy Returns'	Happy Returns Daylily	1 qt.	12" oc
NF 3	Nepeeta f. 'Blue Wonder'	Blue Wonder Catmint	2 qt.	24" oc
PH 12	Pennisetum a. 'Horneln'	Horneln Fountain Grass	2 qt.	30" oc

DO NOT HEAVILY PRUNE THE TREE AT PLANTING. PRUNE ONLY CROSSOVER LIMBS OR DOMINANT BRANCHES THAT INTERFERE WITH THE TRUNK OR SOME INTERIOR BRANCHES. BRANCHES MAY BE PRUNED, HOWEVER, DO NOT REMOVE THE TERMINAL BUDS OF BRANCHES THAT EXTEND TO THE EDGE OF THE CROWN.

STAKE TREES ONLY UPON THE APPROVAL OF THE LANDSCAPE ARCHITECT. SEE SINKING DETAIL.

WARP TREE TRUNKS ONLY UPON THE APPROVAL OF THE LANDSCAPE ARCHITECT. SEE WRAPPING DETAIL.

MARK THE NORTH SIDE OF THE TREE IN THE PLANTING AND ROTATE TREE TO FACE NORTH AT THE SITE WHEN EVER POSSIBLE.



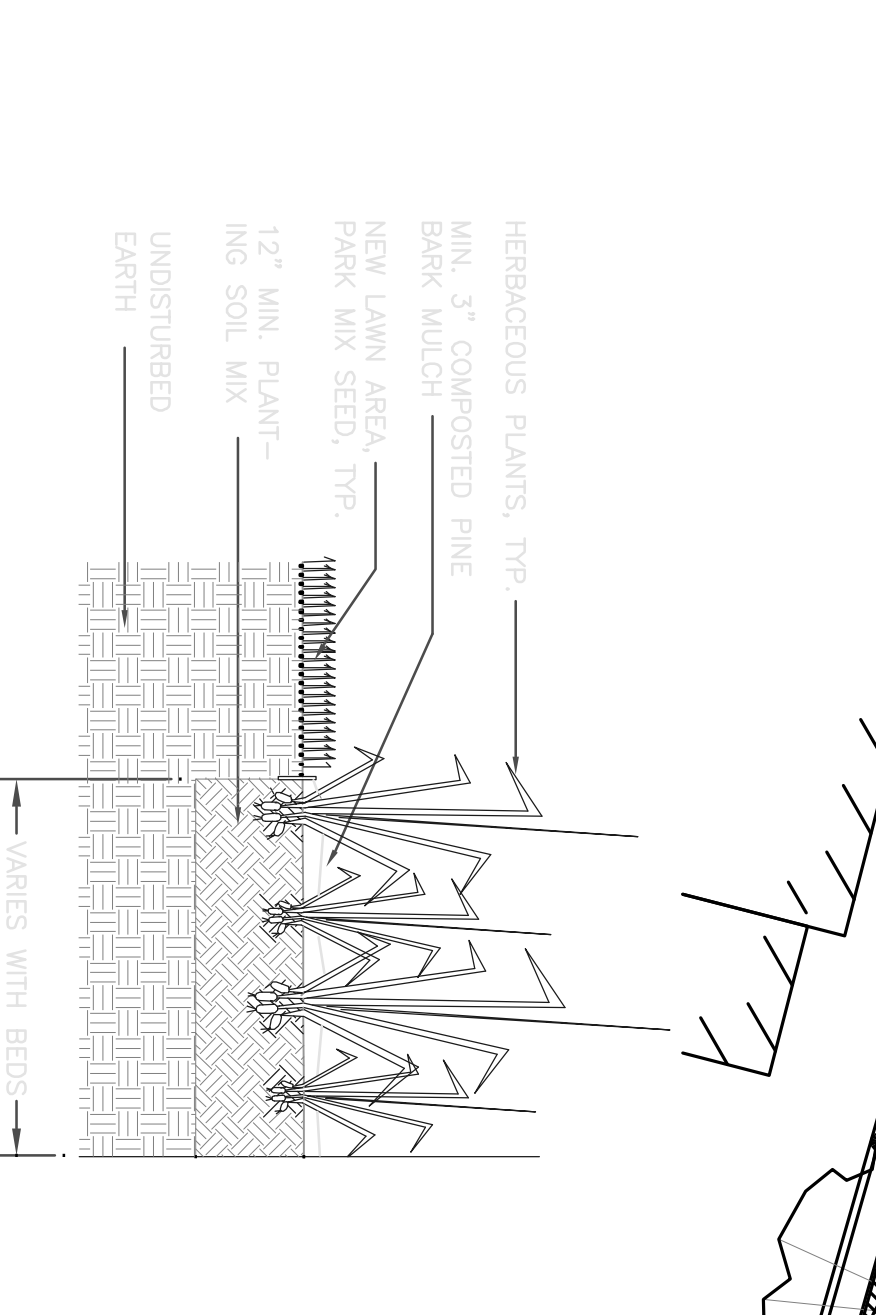
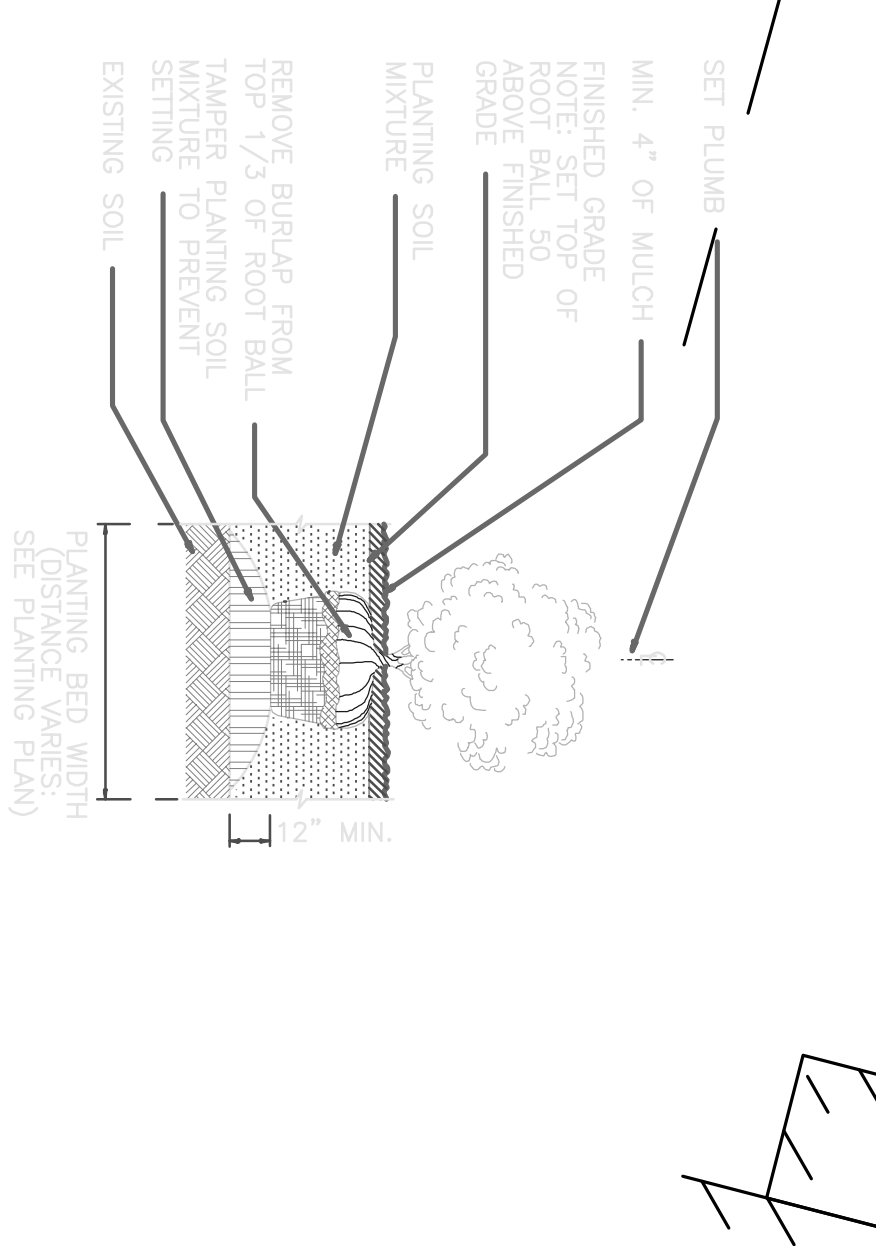
PLANTING KEY

- PROPOSED SHADE TREE
- PROPOSED EVERGREEN TREE
- PROPOSED FLOWERING TREE
- PROPOSED DECIDUOUS SHRUB
- PROPOSED EVERGREEN SHRUB
- PROPOSED PERENNIALS/GROUNDCOVERS

C TREE PLANTING DETAIL - B&B TREES IN ALL SOIL TYPES

A SHRUB PLANTING DETAIL

B HERBACEOUS PLANTING DETAIL



REVISION 8: 06-09-2006: REVISED LANDSCAPE PLAN; ADDED DETAILS

NO.	REVISION/ISSUE	DATE

1080 FOREST AVENUE
PORTLAND, MAINE
STEPHEN MARDIGAN

Regina S. Leonard
Landscape Architecture & Design
238 Shaw Street
Portland, ME 04101
Tel: 207-462-9100
mrdig@msd.com

PRELIMINARY LANDSCAPE PLAN

DATE	6.08.06	JOB NO.	RSL#06010
DRAWN	RSL	CHECKED	RSL
SCALE	1"=10'	SHEET NO.	3 OF 5