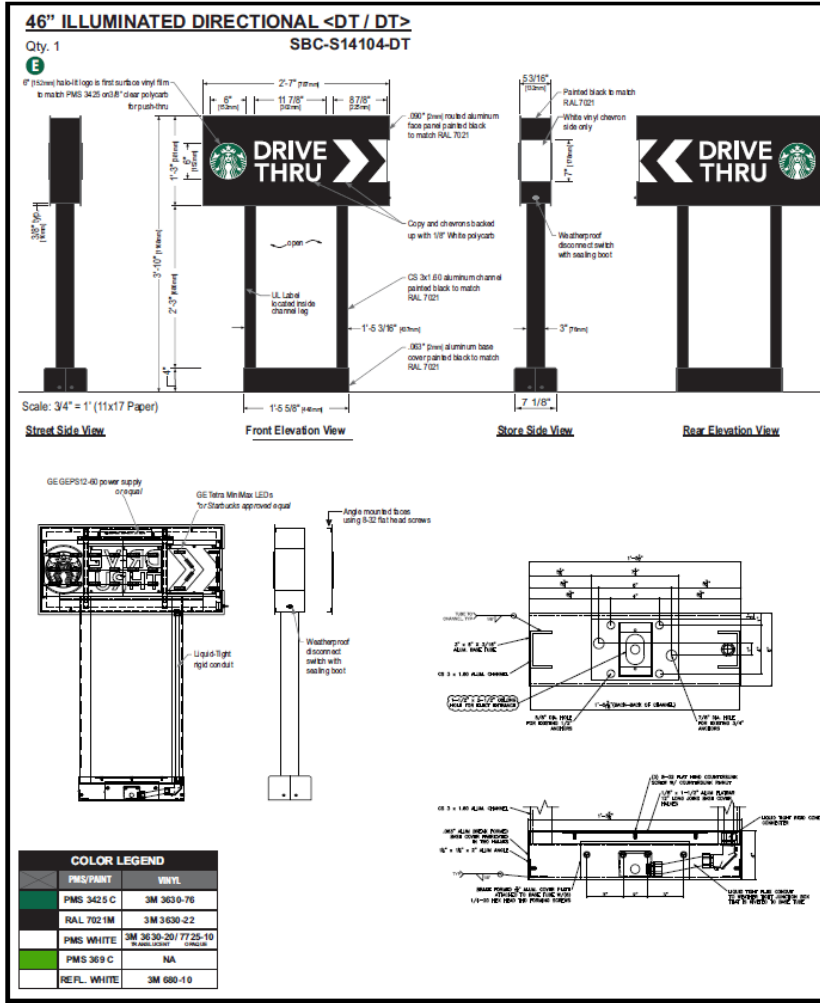


# Starbuck's – D/T Entrance Directional Details



### Sign Specifications:

- Cabinet:**
- Fabricated .090" [2mm] aluminum housing painted black to match RAL 7021 with white end cap as shown.
  - Directional copy and chevrons backed up with 1/8" white polycarb. Sign logo is 6" [152mm] diameter, 3/8" clear polycarb routed to push thru aluminum face. Decorable logo with 1st surface computer cut vinyl film to match PMS 3425. Edges of push thru logo are to be polished. All acrylic face elements to be attached to aluminum face panel with weld studs.
  - Interior aluminum surfaces of sign cabinet to be painted white with Lacryl Starbrite.
  - Internal structure of cabinet shall be per approved shop drawings.
  - Graphic elements are internally illuminated using GE Tetra MiniMax LED system or Starbucks approved equal. LED's to be mounted on an internal baffle with self-contained power supply. All electrical components are removable for service.
- Support:**
- Supporting structure will be all welded aluminum tube and channel construction painted black to match RAL 7021 as per approved shop drawings and shall be integral to the sign cabinet.
  - Base tube will be constructed so that it can be retro-fitted to existing sign foundations. All foundations, existing and new must be analyzed for suitability and must meet all local city or state codes regulations.

Size	Sq. Ft. <sup>1</sup>	Sq. Ft. <sup>2</sup>	Volts	Amps
46" (1168mm)	3.23	9.90	120	0.85

**HILTON DISPLAYS**  
 125 HILLSIDE DRIVE • GREENVILLE SC 29607  
 P 800 353 9132 • F 864 242 2204  
 www.hiltondisplays.com

**QID 17-38411**

**JOB NAME**

Starbucks 11917

**LOCATION**

1080 Forest Ave.  
Portland, ME 04103

**CUSTOMER CONTACT**

**SALESMAN / PM**

Joe Nolasco

**DESIGNER**

Jesse Black

**DWG. DATE**

08-24-17

**REV. DATE / REVISION**

**SCALE**

As Noted

**FILE**

2017/Starbucks/Portland ME/  
17-38411/SB Portland ME.cdr

**DESIGN SPECIFICATIONS ACCEPTED BY:**

EST. CLIENT:

SLS/PM LANDLORD:

THE INTENT OF THIS DRAWING IS TO SHOW A CONCEPTUAL REPRESENTATION OF THE PROPOSED SIGNAGE. DUE TO VARIATIONS IN PRINTING DEVICES AND SUBSTRATES, THE FINISHED PRODUCT MAY VARY SLIGHTLY FROM OUR DRAWINGS.

Underwriters Laboratories Inc.  DRY  DAMP



Client & Location



Starbucks  
1080 Forest Ave  
Portland ME

Customer Approval Signature

Revisions

Drawing ID

Date  
9.15.17

Page #

Drawn By

Sales Rep

WVO #