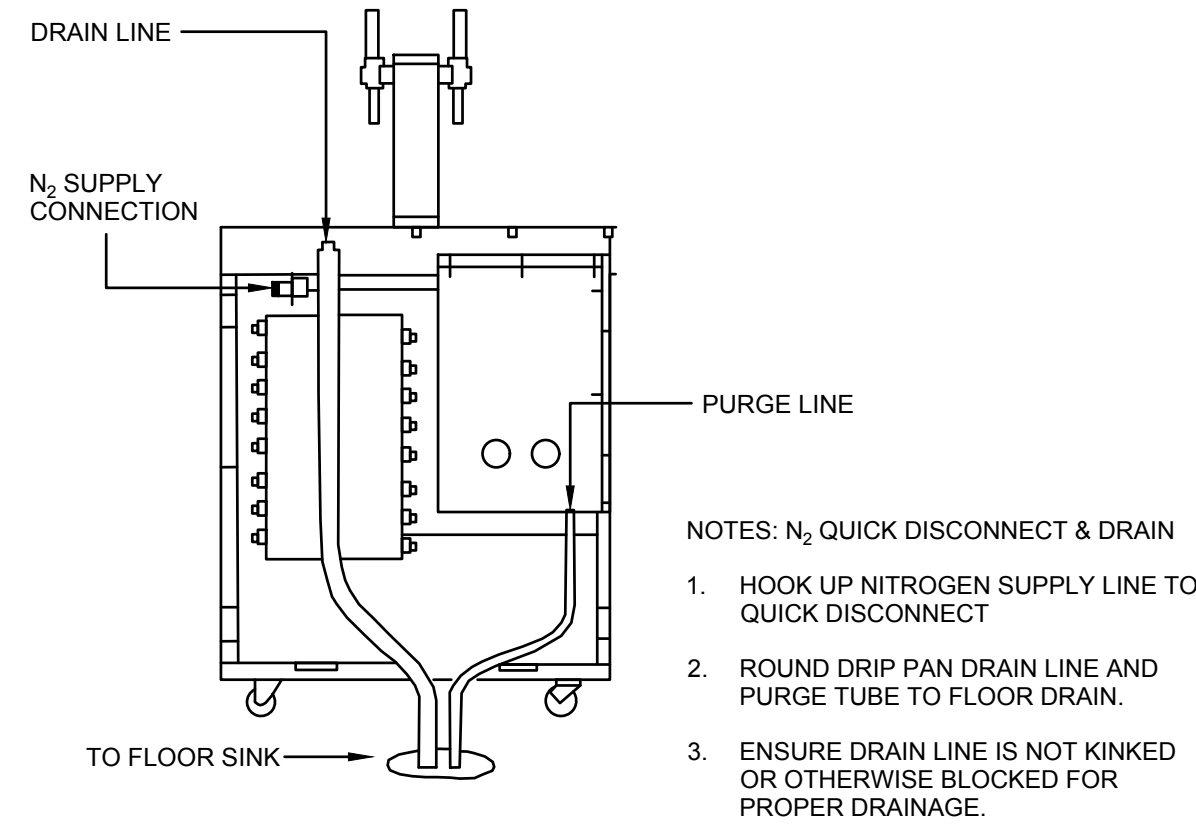


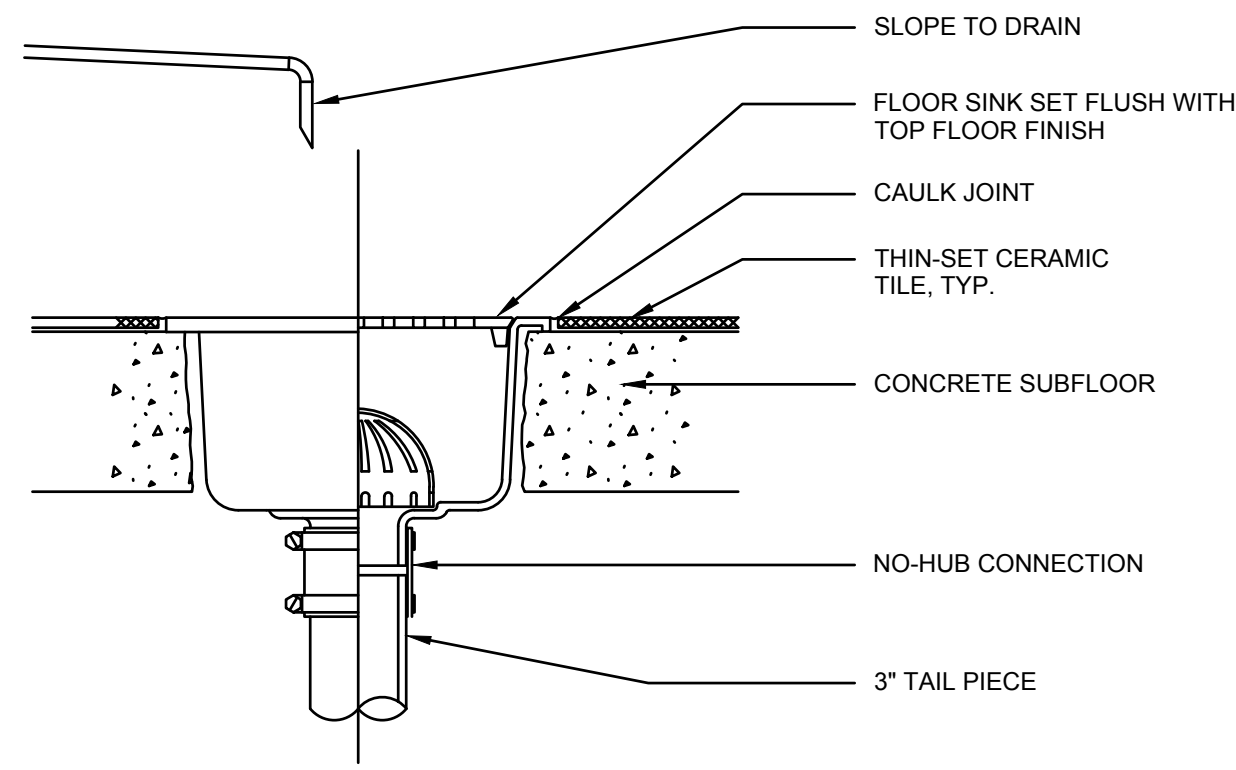
FRONTLINE BARISTA FILTERED WATER MANIFOLD SCHEMATIC

① Scale: NTS



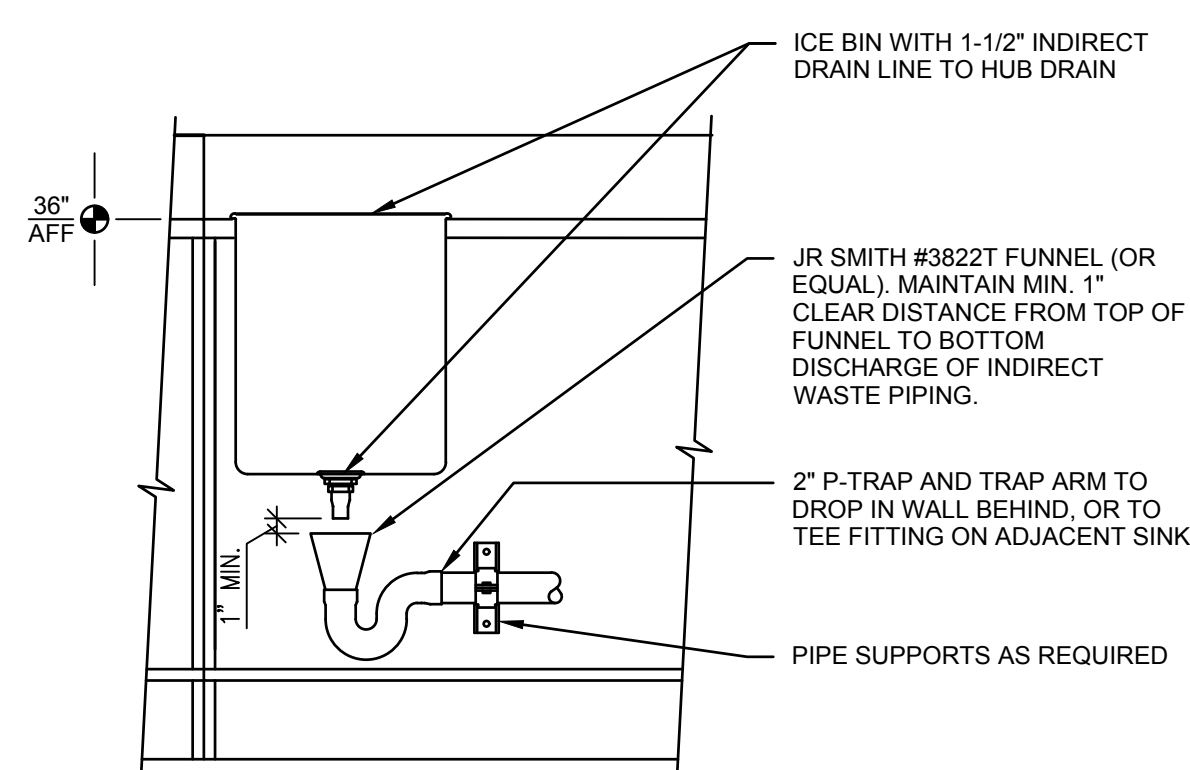
NITRO DRAIN DETAIL

⑤ Scale: NTS



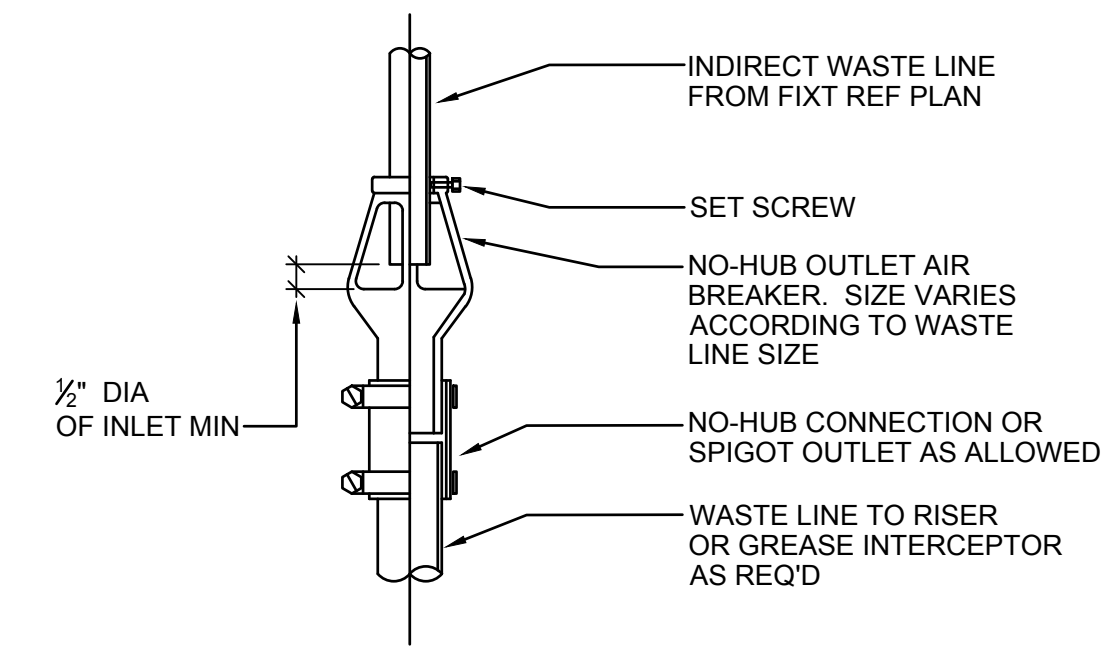
FLOOR SINK DETAIL

② Scale: NTS



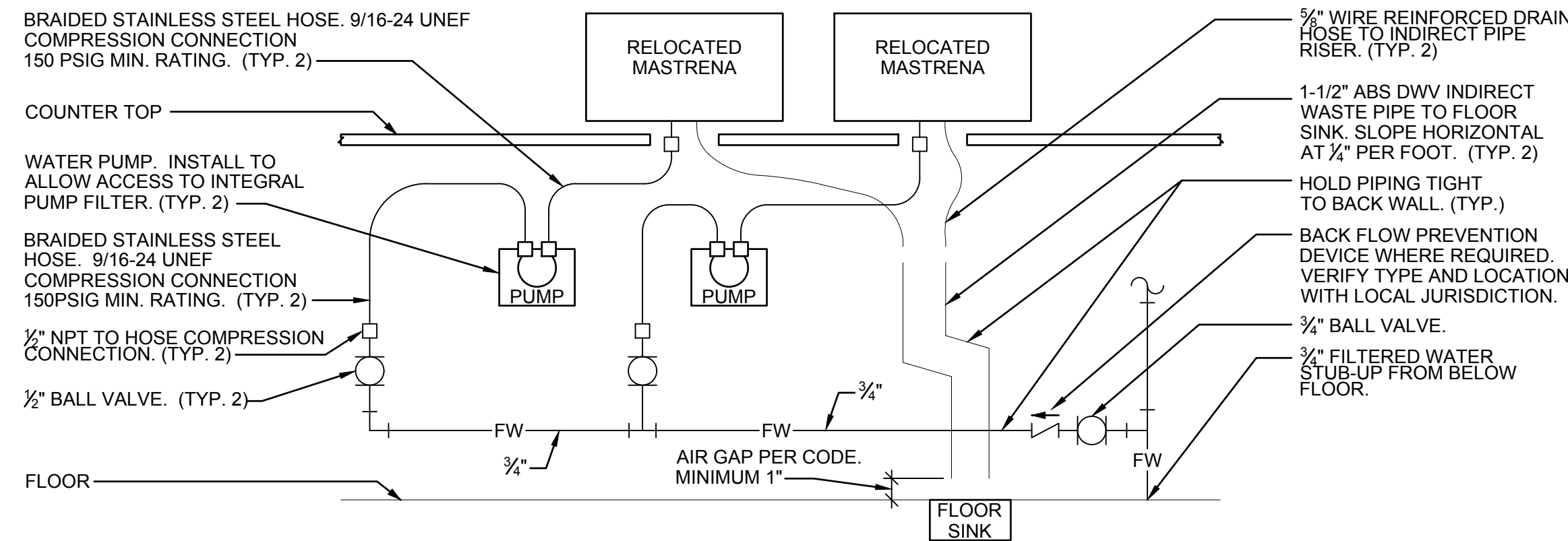
ICE BIN HUB DRAIN DETAIL

③ Scale: NTS



AIR BREAKER DETAIL

④ Scale: NTS



MASTRENA GENERAL PIPING CONNECTION SCHEMATIC DETAIL

⑥ Scale: NTS

DETAIL NOTES

1. THIS DETAIL IS SCHEMATIC ONLY. FOR THE LOCATION OF THE COMPONENTS SHOWN, AND EXTENT OF THE WORK REQUIRED, SEE THE PLAN DRAWINGS.
2. ALL WATER HOSE SHALL BE THE MINIMUM LENGTH NEEDED AND SUPPORTED AS REQUIRED TO AVOID STRESSING CONNECTIONS AND COILING EXCESSIVE HOSE. ROUTE TO AVOID KINKING AND ALLOW SPACE FOR UNDER COUNTER REFRIGERATOR AND ACCESS TO EQUIPMENT AND VALVES.
3. ALL PIPING SHALL BE HELD TIGHT TO WALLS, SLOPED WHERE REQUIRED AND ROUTED TO ALLOW ACCESS TO EQUIPMENT AND VALVES.
4. ROUTE HORIZONTAL PIPING A MINIMUM OF 6" ABOVE FLOOR.
5. INSTALL PUMP AS SHOWN ON PLANS. COORDINATE LOCATION AND ELEVATION WITH OTHER TRADES. ORIENT PUMP AS REQUIRED TO ALLOW MAINTENANCE.



STARBUCKS COFFEE COMPANY
2401 UTAH AVENUE SOUTH
SEATTLE, WASHINGTON 98134
(206) 318-1575

THESE DRAWINGS AND SPECIFICATIONS ARE CONFIDENTIAL AND SHALL REMAIN THE SOLE PROPERTY OF STARBUCKS CORPORATION, WHICH IS THE COPYRIGHT IN THIS WORK. THEY SHALL NOT BE REPRODUCED (IN WHOLE OR IN PART), SHARED WITH THIRD PARTIES OR USED IN ANY MANNER ON OTHER PROJECTS OR EXTENSIONS TO THIS PROJECT WITHOUT THE PRIOR WRITTEN CONSENT OF STARBUCKS CORPORATION. THESE DRAWINGS AND SPECIFICATIONS ARE INTENDED TO EXPRESS DESIGN INTENT FOR A PROTOTYPICAL STARBUCKS STORE (WHICH IS SUBJECT TO CHANGE AT ANYTIME) AND DO NOT REFLECT ACTUAL SITE CONDITIONS. NEITHER PARTY SHALL HAVE ANY OBLIGATION NOR LIABILITY TO THE OTHER (EXCEPT STATED ABOVE) UNTIL A WRITTEN AGREEMENT IS FULLY EXECUTED BY BOTH PARTIES.

STARBUCKS TEMPLATE VERSION | 2016.12.23

NORR
ARCHITECTS PLANNERS
325 N. LaSalle St., Suite 500 | Chicago, IL 60654
1.312.424.2400 | www.norr.com

ENGINEER OF RECORD
William J. Alkemyer, P.E.
353 Marshall Avenue
St. Louis, Missouri 63119
Phone (314) 772-1782
Fax (314) 772-2108
Engineering Consultant

ISSUED FOR CONSTRUCTION - 08/23/2017

PROJECT NAME:
RENOVATION OF STARBUCKS COFFEE PORTLAND, 1080 FOREST AVE.
PROJECT ADDRESS:
1080 FOREST AVENUE
PORTLAND, ME 04103
CUMBERLAND COUNTY

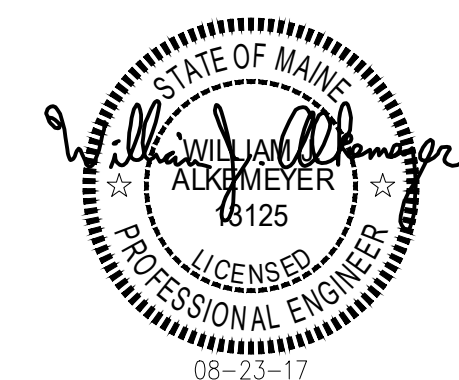
STORE #: 11917
PROJECT #: 37548-037
ISSUE DATE: 08/04/2017
PROGRAM MANAGER: J. BOND
DESIGNER: A. LEE
LEED AP: R. TURNER-LAUCK
PRODUCTION DESIGNER: E. VEGA
CHECKED BY: SMD

Revision Schedule			
Rev	Date	By	Description

SHEET TITLE:
PLUMBING DETAILS

SCALE: AS SHOWN

SHEET NUMBER:
P-5001



146-17