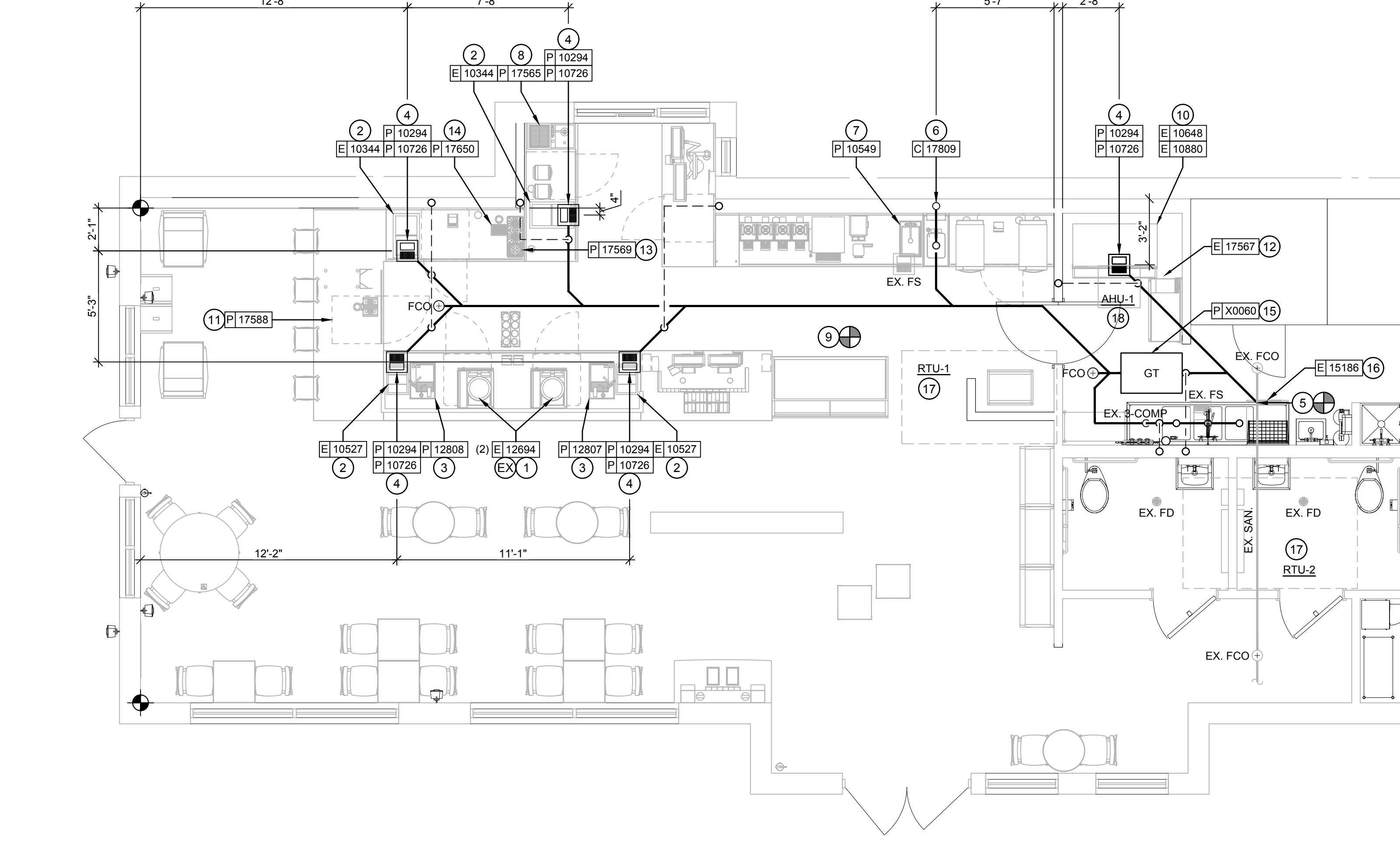


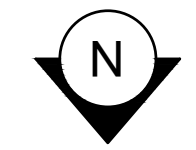
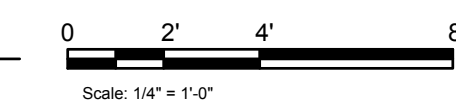
2 SANITARY ISOMETRIC DIAGRAM

Scale: NTS



1 PLUMBING WASTE PLAN

Scale: 1/4" = 1'-0"



USE EXISTING FLOOR RECEPTACLES WHERE APPLICABLE. CAP OFF AND FILL ANY EXISTING THAT ARE NOT USED. EXISTING PLUMBING AND FLOOR LOCATIONS MUST BE VERIFIED IN FIELD AND COORDINATED WITH CASEWORK VENDOR.

DFU CALCULATION			
FIXTURE	QTY.	DFU EACH	TOTAL
EXISTING WATER CLOSET (VALVE)	2	4	8
EXISTING LAVATORY	2	1	2
EXISTING MOP SINK	1	3	3
EXISTING 3-COMPARTMENT SINK	1	2	2
EXISTING WAREWASHER (.74 GPM)	1	3	3
EXISTING HAND SINK	1	1	1
EXISTING FLOOR DRAIN	2	6	12
ICE MACHINE AND BIN	1	0.5	0.5
HAND SINK	1	1	1
KITCHEN SINK	4	3	12
ICE BIN	4	0.5	2
DRAIN TRAYS	2	0.5	1
WATER CHILLER	1	0.5	0.5
ESPRESSO MACHINE	2	0.5	1
TOTAL DFU REQUIRED			49

49 DFU PER THE 2009 UNIFORM PLUMBING CODE.

GREASE TRAP CALCULATION			
EQUIPMENT	DESCRIPTION	COMPT SIZE	FLOW RATE REQUIRED
EXISTING	3-COMP SINK	3(19"x16"x14") = 12,768 CI/231(.75)=	41.5
17565	RINSE SINK	13"x10"x14" = 1,820 CI/231(.75)=	6
		13"x12"x1.75" = 273 CI/231(.75)=	0.9
12807 / 12808	BARISTA SINK	15.5"x10"x10" = 1,550 CI/231(.75)= (2 TOTAL)	10.1
10549	WORK SINK	16.75"x10.875"x12" = 2185.875 CI/231(.75)=	7.1
17809	HAND SINK	14"x10"x6" = 840 CI/231(.75)= (2 TOTAL)	5.5
17569 / 17650	DRAIN TRAYS	ESTIMATED 1 GPM EACH (2 TOTAL)	2
10344 / 10527	ICE BIN	ESTIMATED 1 GPM EACH (3 TOTAL)	3
12694	BARISTA MACHINE	ESTIMATED 1 GPM EACH (2 TOTAL)	2
17588	NITRO BREWER	ESTIMATED 1 GPM EACH (1 TOTAL)	1
TOTAL GPM =			79.1 GPM
2 MIN. DRAIN TIME			40 GPM
TOTAL FLOW RATE SUPPLIED			50 GPM
TOTAL GREASE CAPACITY SUPPLIED			127.6 LBS

PROVIDE A SCHIER MODEL GB-50 GPM FLUSH WITH FLOOR GREASE TRAP OR APPROVED EQUAL. VENT PER LOCAL CODE.

PLUMBING WASTE NOTES

- SEE PLUMBING SPECIFICATIONS FOR FURTHER REQUIREMENTS.
- ALL PLUMBING LINES TO BE ROUTED SUCH THAT THEY ARE NOT VISIBLE TO CUSTOMERS EXCEPT WHERE FIRST APPROVED BY STARBUCKS AT EXPOSED CEILING AREAS.
- REFER TO MANUFACTURER SPECIFICATIONS FOR LOCATION OF CONNECTIONS UNLESS OTHERWISE NOTED.
- COORDINATE WITH ELECTRICAL CONTRACTOR FOR POWER CONNECTION TO ALL PLUMBING EQUIPMENT.
- DIMENSIONS ARE TO FINISH FACE UNLESS OTHERWISE NOTED.
- REFER TO DETAIL SHEETS FOR PLUMBING FITTINGS LOCATED IN CASEWORK.
- WHEN BUNDLING SEVERAL INDIRECT WASTE LINES TO DRAIN INTO A FLOOR SINK, A UNISTRUT IS REQUIRED FOR SECURING AND BRACING ALL LINES ABOVE THE DRAIN.
- FURNISH & INSTALL ALL NEEDED INDIRECT DRAINS PER CODE (NOT ALL SHOWN). INSTALL DRAINS AT 2% SLOPE WHERE POSSIBLE WITHOUT DIPS OR SAGS. ALL INDIRECT DRAINS SHALL RUN SEPARATELY FROM EACH OTHER TO INDIRECT DRAIN RECEPTOR AND SHALL TERMINATE WITH AN AIR GAP PER CODE.
- FURNISH & INSTALL WALL CLEANOUTS AT ALL SINKS AND AS NEEDED AND PER CODE (NOT ALL SHOWN).
- INSULATE ICE BIN DRAINAGE PIPES PER THE REQUIREMENTS ON THE PLUMBING SPECIFICATION SHEET.

SHEET NOTES

- 5/8" DRAIN HOSE FROM NEW / RELOCATED ESPRESSO MACHINE TO INDIRECT DRAIN RISER. SEE DETAIL ON SHEET P-5001.
- 1" INDIRECT INSULATED DRAIN LINE FROM ICE BIN DROP TO NEW / FLOOR SINK.
- 1-1/2" INDIRECT DRAIN FROM WATER STATION DRAIN BOARD TO FLOOR SINK.
- 3" WASTE FROM FLOOR SINK. GENERAL CONTRACTOR MAY NEED TO MODIFY CABINET BASE TO ALLOW ACCESS TO FLOOR SINK.
- TIE INTO EXISTING BUILDING SANITARY WASTE. VERIFY EXACT LOCATION, INVERTS AND REQUIREMENTS ON SITE.
- 2" WASTE FROM SINK.
- 1-1/2" INDIRECT DRAIN TO EXISTING FLOOR SINK. SEE DETAIL ON SHEET P-5001.
- (2) 1-1/2" INDIRECT DRAIN FROM PITCHER RINSER SINK TO EXISTING FLOOR SINK.
- MAKE CONNECTION TO EXISTING VENT SYSTEM IN PREMISES. VERIFY EXACT LOCATION, SIZE AND REQUIREMENTS ON SITE.
- (2) 3/4" INDIRECT DRAIN FROM ICE MACHINE AND BIN TO INDIRECT DRAIN AT FLOOR SINK.
- ROUTE 1/2" INDIRECT WASTE FROM THE PURGE TUBE FROM THE COMPRESSOR OF THE COLD BREW NITRO SYSTEM TO FLOOR SINK. INSTALL PER MANUFACTURER'S RECOMMENDATION AND STARBUCKS STANDARDS AND GUIDELINES.
- ROUTE INDIRECT WASTE FROM WATER CHILLER DRAIN TO NEARBY FLOOR SINK SERVING ICE MACHINE OR NEAREST APPROVED RECEPTOR. FIELD VERIFY EXACT LOCATION AND REQUIREMENTS. INSTALL PER LOCAL CODE.
- ROUTE 2" INDIRECT WASTE FROM DRAIN TRAY & INDIRECT WASTE FROM DRAIN HOSE OF THE WARE RINSER TO FLOOR SINK AS REQUIRED.
- ROUTE 2" INDIRECT WASTE FROM THE DRAIN TRAY TO FLOOR SINK.
- PROVIDE AND INSTALL FLUSH WITH FLOOR GREASE TRAP. SEE GREASE TRAP CALCULATION ON THIS SHEET FOR SIZE AND MODEL. VERIFY EXACT LOCATION IN FIELD. PROVIDE A VENTED ACCESSIBLE FLOW CONTROL DEVICE AS REQUIRED BY CODE.
- 1-1/2" INDIRECT DRAIN FROM DISHWASHER TO FUNNEL OVER EXISTING FLOOR SINK (IF PERMITTED). 1-1/2" TRADE SIZE PIPE MINIMUM REDUCED TO 3/4" FPT CONNECTION.
- RTU-1 & 2 TO BE REPLACED WITH NEW UNITS IN EXISTING LOCATIONS. SEE SHEET M-1101 FOR MORE INFORMATION. NEW CODNENSTATE DRAINS SHALL BE ROUTED TO ROOF OR OTHER DRAINAGE RECEPTACLE AS REQUIRED.
- NEW AHU-1 PROVIDE CONDENSATE PIPING AS REQUIRED. ROUTE CONDENSATE DRAIN TO NEAREST APPROVED RECEPTACLE.



STARBUCKS COFFEE COMPANY
 2401 UTAH AVENUE SOUTH
 SEATTLE, WASHINGTON 98134
 (206) 318-1575

THESE DRAWINGS AND SPECIFICATIONS ARE CONFIDENTIAL AND SHALL REMAIN THE SOLE PROPERTY OF STARBUCKS CORPORATION, WHICH IS THE OWNER OF THE COPYRIGHT IN THIS WORK. THEY SHALL NOT BE REPRODUCED (IN WHOLE OR IN PART), SHARED WITH THIRD PARTIES OR USED IN ANY MANNER ON OTHER PROJECTS OR EXTENSIONS TO THIS PROJECT WITHOUT THE PRIOR WRITTEN CONSENT OF STARBUCKS CORPORATION. THESE DRAWINGS AND SPECIFICATIONS ARE INTENDED TO EXPRESS DESIGN INTENT FOR A PROTOTYPICAL STARBUCKS STORE (WHICH IS SUBJECT TO CHANGE AT ANYTIME) AND DO NOT REFLECT ACTUAL SITE CONDITIONS. NEITHER PARTY SHALL HAVE ANY OBLIGATION NOR LIABILITY TO THE OTHER (EXCEPT STATED ABOVE) UNTIL A WRITTEN AGREEMENT IS FULLY EXECUTED BY BOTH PARTIES.

STARBUCKS TEMPLATE VERSION | 2016.12.23

NORR
 ARCHITECTS PLANNERS
 225 N. LESLIE ST., SUITE 500 | CHICAGO, IL 60654
 312.242.2400 | www.norr.com

ENGINEER OF RECORD
 William J. Alkemeyer, P.E.
 353 Marshall Avenue
 St. Louis, Missouri 63119
 Phone (314) 772-1782
 Fax (314) 772-0708
 Engineering Consultant

PROJECT NAME:
RENOVATION OF STARBUCKS COFFEE PORTLAND, 1080 FOREST AVE.
 PROJECT ADDRESS:
1080 FOREST AVENUE PORTLAND, ME 04103 CUMBERLAND COUNTY

STORE #: 11917
 PROJECT #: 37548-037
 ISSUE DATE: 08/04/2017
 PROGRAM MANAGER: J. BOND
 DESIGNER: A. LEE
 LEAD AP: R. TURNER-LAUCK
 PRODUCTION DESIGNER: E. VEGA
 CHECKED BY: SMD

Revision Schedule			
Rev	Date	By	Description

SHEET TITLE:
PLUMBING WASTE PLAN

SCALE: AS SHOWN

SHEET NUMBER:
P-1102

ISSUED FOR CONSTRUCTION - 08/23/2017

