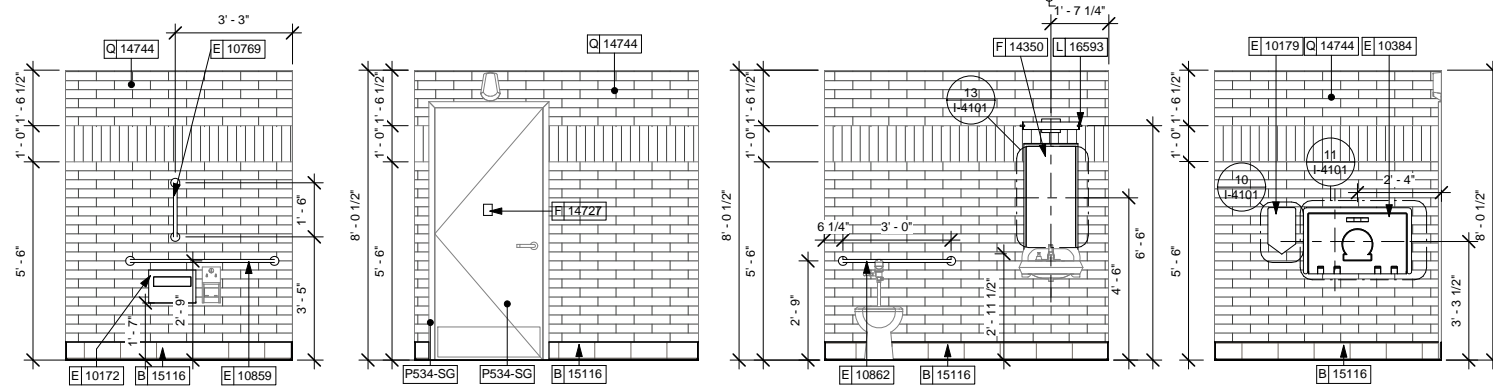
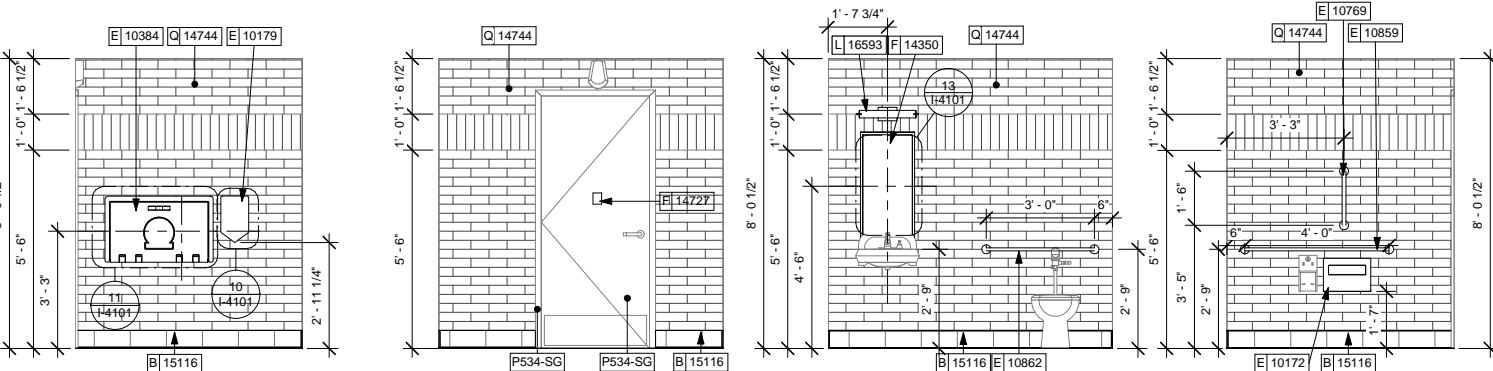


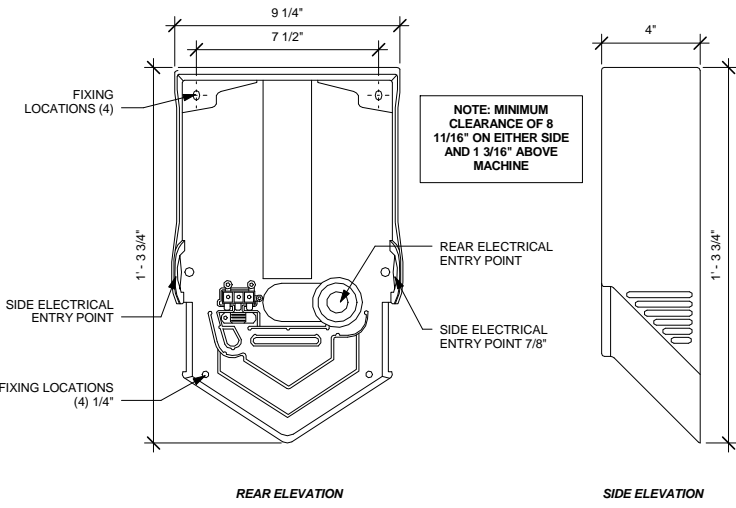
8/23/2017 12:36:21 PM P:\Restaurant\Starbucks\NICH17-0130 - Starbucks - Portland - 1080 Forest Ave - Permit set.rvt



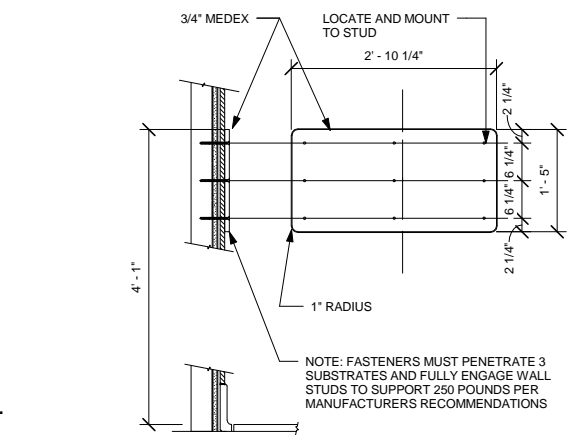
1 MEN'S RR - EAST ELEV. Scale: 3/8" = 1'-0"
 2 MEN'S RR - NORTH ELEV. Scale: 3/8" = 1'-0"
 3 MEN'S RR - SOUTH ELEV. Scale: 3/8" = 1'-0"
 4 MEN'S RR - WEST ELEV. Scale: 3/8" = 1'-0"



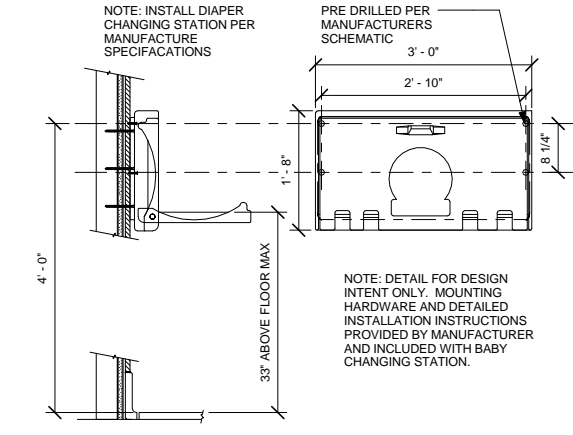
5 WOMEN'S RR - EAST ELEV. Scale: 3/8" = 1'-0"
 6 WOMEN'S RR - NORTH ELEV. Scale: 3/8" = 1'-0"
 7 WOMEN'S RR - SOUTH ELEV. Scale: 3/8" = 1'-0"
 8 WOMEN'S RR - WEST ELEV. Scale: 3/8" = 1'-0"



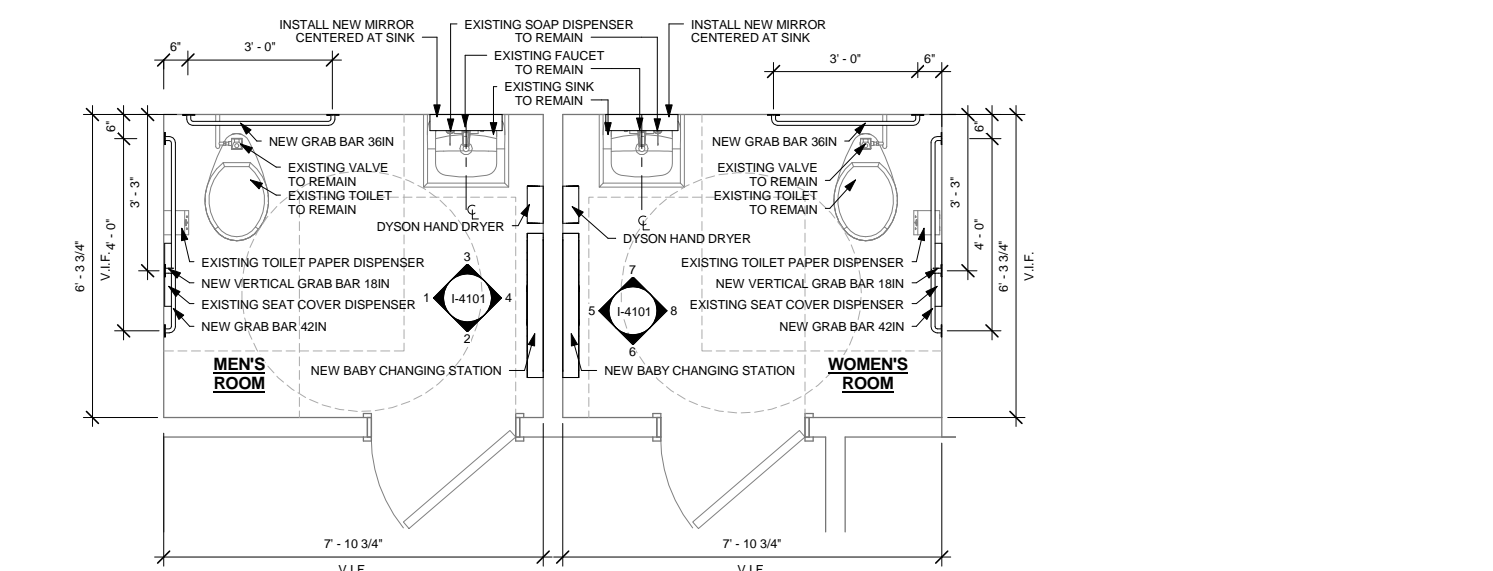
10 DYSON HAND DRYER INSTALLTION DETAILS
 Scale: 3" = 1'-0"



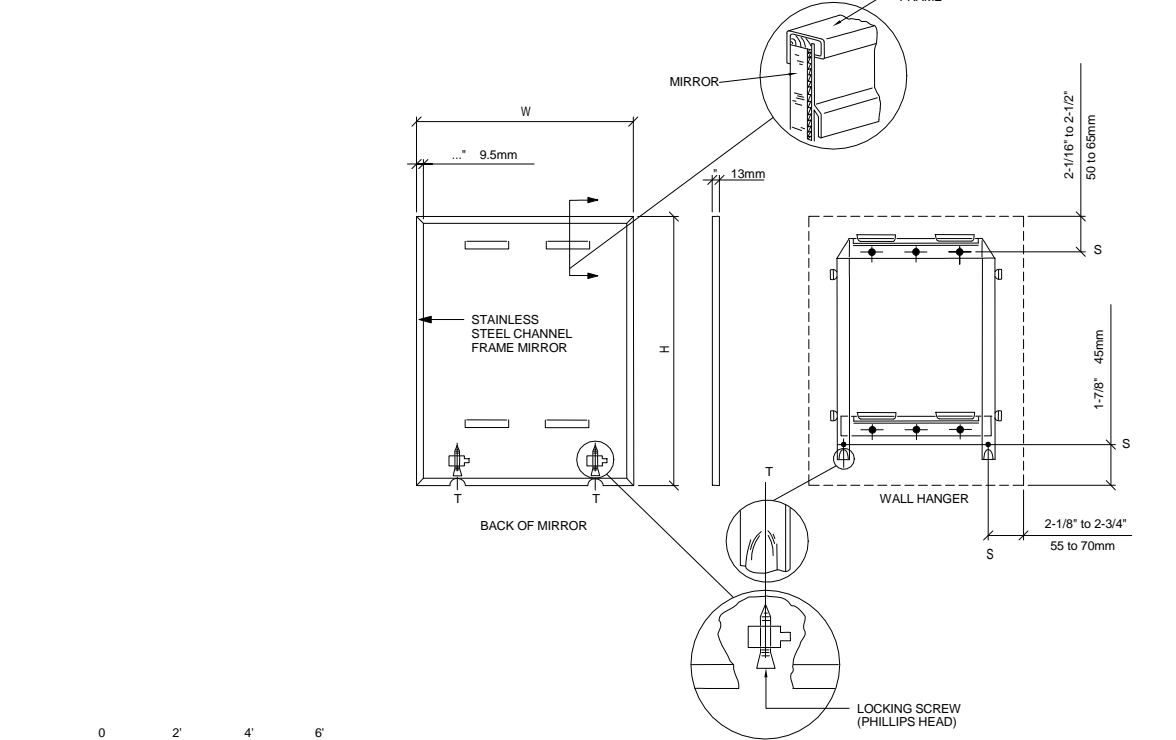
11 CHANGING STATION MOUNTING
 Scale: 3/4" = 1'-0"



12 DIAPER CHANGING STATION
 Scale: 3/4" = 1'-0"



9 ENLARGED RESTROOM PLAN
 Scale: 1/2" = 1'-0"



13 MIRROR MOUNTING
 Scale: 3/4" = 1'-0"

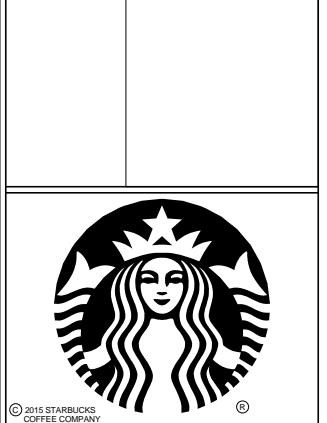
ENLARGED RESTROOM PLAN NOTES

- A. GENERAL CONTRACTOR TO VERIFY ALL DIMENSIONS AND NOTIFY STARBUCKS CONSTRUCTION MANAGER OF ANY DISCREPANCIES PRIOR TO CONSTRUCTION. ALL DIMENSIONS TO BE TAKEN FROM DESIGNATED DATUM POINT.
- B. DIMENSIONS ARE TO FACE OF FINISHED SURFACE.
- C. DETAILS ARE FOR REFERENCE ONLY.
- D. ALL RESTROOM ACCESSORY MOUNTING HEIGHTS TO MEET ACCESSIBILITY REQUIREMENTS PER STARBUCKS ACCESSIBILITY STANDARDS.

DIAPER CHANGING STATION NOTES

- 1. CHANGING STATION IS TO BE INSTALLED PER MANUFACTURER'S INSTRUCTIONS. UNIT IS TO BE FASTENED TO STRUCTURE AT ALL SIX CHASSIS ATTACHMENT POINTS. STANDARD INSTALLATION IS ATTACHMENT TO WOOD STUDS AND/OR WOOD BLOCKING. FOR NON-STANDARD FRAMING CONDITIONS OTHER THAN CONCRETE, USE TOGGLER SNAPTGGLE HEAVY DUTY TOGGLE BOLTS TO SECURELY ATTACH CHASSIS TO WALL. FOR CONCRETE WALLS, USE FISCHER S-PLUG FIXINGS TO ANCHOR FASTENERS. SUBSTITUTION OF FASTENERS OTHER THAN THE MANUFACTURER AND PRODUCT SPECIFIED IS NOT ALLOWED WITHOUT PRIOR APPROVAL. LOAD TEST AFTER INSTALLATION WITH 100 LB. WEIGHT FOR 15 MINUTES.
- 2. LOCATE STATION AS SHOWN TO ALLOW NECESSARY CLEARANCE FOR OPERATION OF ALL RESTROOM FIXTURES. LOCATION SHALL NOT IMPEDE ACCESS, EGRESS, OR DOOR SWING. VERIFY ANY ALTERNATE LOCATION OR INSTALLATION APPROACH WITH STARBUCKS PROJECT LEAD.

ISSUE FOR CONSTRUCTION 08/23/2017



STARBUCKS COFFEE COMPANY
 2401 UTAH AVENUE SOUTH
 SEATTLE, WASHINGTON 98134
 (206) 318-1575

THESE DRAWINGS AND SPECIFICATIONS ARE CONFIDENTIAL AND SHALL REMAIN THE SOLE PROPERTY OF STARBUCKS CORPORATION, WHICH IS THE OWNER OF THE COPYRIGHT IN THIS WORK. THEY SHALL NOT BE REPRODUCED (IN WHOLE OR IN PART), SHARED WITH THIRD PARTIES OR USED IN ANY MANNER ON OTHER PROJECTS OR EXTENSIONS TO THIS PROJECT WITHOUT THE PRIOR WRITTEN CONSENT OF STARBUCKS CORPORATION. THESE DRAWINGS AND SPECIFICATIONS ARE INTENDED TO EXPRESS DESIGN INTENT FOR A PROTOTYPICAL STARBUCKS STORE (WHICH IS SUBJECT TO CHANGE AT ANYTIME) AND DO NOT REFLECT ACTUAL SITE CONDITIONS. NEITHER PARTY SHALL HAVE ANY OBLIGATION NOR LIABILITY TO THE OTHER (EXCEPT STATED ABOVE) UNTIL A WRITTEN AGREEMENT IS FULLY EXECUTED BY BOTH PARTIES.

STARBUCKS TEMPLATE VERSION I2016.12.23

NORR
 ARCHITECTS PLANNERS
 325 N. LaSalle St., Suite 500 | Chicago, IL 60654
 1.312.424.2400 | www.norr.com

ENGINEER OF RECORD
 William J. Abenay, P.E.
 903 Marshall Avenue
 St. Louis, Missouri 63119
 Phone (314) 772-1782
 Fax (314) 772-0208
 Engineering Consultant

LICENSED ARCHITECT
 PETER A. DURBIN
 No. 2573
 STATE OF MICHIGAN

PROJECT NAME:
RENOVATION OF STARBUCKS COFFEE PORTLAND, 1080 FOREST AVE.
 PROJECT ADDRESS:
 1080 FOREST AVENUE
 PORTLAND, ME 04103
 CUMBERLAND COUNTY

STORE #: 11917
 PROJECT #: 37548-037
 ISSUE DATE: 08/23/2017
 PROGRAM MANAGER: J. BOND
 DESIGNER: A. LEE
 LEED® AP: N/A
 PRODUCTION DESIGNER: E. VEGA
 CHECKED BY: P. BENVENUTO

Revision Schedule			
Rev	Date	By	Description

SHEET TITLE:
ENLARGED RESTROOM PLAN AND ELEVATIONS
 SCALE: AS SHOWN

SHEET NUMBER:
I-4101