

CEILING TREATMENT SCHEDULE - "U"				
DESIGN ID	DESCRIPTION	FURNISH	INSTALL	COMMENTS
OTHER				
10517	ACT - WHITE - 2X2FT 61X61CM	GC	GC	REPAIR CEILING GRID AS NEEDED AND ADD IN AREAS WHERE REQUIRED. REMOVE EXISTING CEILING TILE AND REPLACE WITH NEW
PAINT				
SW7043	SW - WORDLY GRAY SEMIGLOSS	GC	GC	SW7043, USE PRIMER CP-1

PAINT SCHEDULE				
COLOR CODE	DESCRIPTION	FURNISH	INSTALL	COMMENTS
P534-SG	SW - BLACK FOX SEMIGLOSS	GC	GC	SW7020, USE PRIMER CP-1
P578-ES	SW - DOVETAIL EG SHELL	GC	GC	SW7018, USE PRIMER CP-1
SW7043	SW - WORDLY GRAY SEMIGLOSS	GC	GC	SW7043, USE PRIMER CP-1

LIGHTING FIXTURE SCHEDULE - "L"						
DESIGN ID	COUNT	DESCRIPTION	FURNISH	INSTALL	BULB	COMMENTS
EXIT						
11419	1	EMERGENCY LIGHT DOUBLE - BLACK	VD	GC	LED 5W LOW ENERGY OR EQUAL	FSGI
11611	1	EMERGENCY EXIT LIGHT - WHITE	VD	GC	LED 5W LOW ENERGY OR EQUAL	FSG
LAMP						
14516	92	LED PAR 20 500LM 2700K SPOT - BLACK	VD	GC		FSG
RECESSED CAN						
11278	2	CAN - RECESSED - 5IN 125MM - BLACK	VD	GC	(1) LED A19 2700K OR EQUAL - 600LM	FSG
12869	2	CAN - RECESSED TRIM BAFFLE - 5IN 125MM - WHITE	VD	GC		FSG
SCONCE						
16593	2	SCONCE - LED RESTROOM VANITY TUBULAR - OPAL GLASS AND BRUSHED NICKEL	VD	GC	INTEGRATED LED	FSGI
STRIP						
X0087	4	STRIP - LED TAPE JUNO FLEX CONNECT	VD	GC	INTEGRATED LED	FSGI. PROVIDE (2) 9FT, (2) 12FT IN BACKBAR SHELVES, (1) 10FT AND (1) 21'-0" UNDERCOUNTER STANDARD OUTPUT, NO CHANNEL
TRACK						
12946	2	TRACK - WITH CONNECTORS - 4FT 122CM - BLACK	VD	GC		FSGI
12947	2	TRACK - WITH CONNECTORS - 8FT 244CM - BLACK	VD	GC		FSGI
12949	12	TRACK - WITH CONNECTORS - 12FT 365CM - BLACK	VD	GC		FSGI
12955	92	TRACK - FIXTURE OPEN FLARED - 3.5IN 90MM - BLACK	VD	GC	(1) 14516 - LED PAR 20 500LM 2700K SPOT BLACK, OR EQUAL	FSGI. TO USE WITH 14673
15058	2	TRACK - WITH CONNECTORS - 6FT 183CM - BLACK	VD	GC		FSGI

SHEET NOTES

**MATERIAL AREAS AND TAKE-OFFS ARE ACTUAL AREA, NOT ORDERING QUANTITY. SUPPLIER MUST ACCOUNT FOR OVERAGE, PATTERN REPEAT, ACCESSORY PIECES, ETC.

- ADD CEILING GRID TO MATCH EXISTING WHERE NEEDED
- INSTALL NEW 2X2 ACT TILE WHERE NEEDED
- EXISTING CEILING TO REMAIN. REPAIR AS NEEDED. LIGHTING, MECHANICAL AND OTHER CEILING EQUIPMENT TO REMAIN IN PLACE
- EXISTING SPEAKERS IN INTERIOR AND EXTERIOR CAFE AREAS TO REMAIN
- EXISTING FIRE-RELATED EQUIPMENT TO REMAIN IN PLACE. VERIFY WITH FIRE MARSHAL THAT NO ADDITIONAL EQUIPMENT IS REQUIRED FOR NEW LAYOUT.
- INSTALL NEW TRACK LIGHTS AS INDICATED. MOUNT TRACK DIRECTLY TO CEILING.
- INSTALL NEW RESTROOM SCONCE AS INDICATED. SEE INTERIOR ELEVATIONS FOR MOUNTING HEIGHT
- INSTALL NEW EMERGENCY LIGHTS AS INDICATED. SEE INTERIOR ELEVATIONS FOR MOUNTING HEIGHT.
- SIGNAGE VENDOR TO INSTALL NEW WORDMARK AS INDICATED. ALL SIGNAGE TO BE PERMITTED SEPARATELY.
- DIRECTIONAL DRIVE-THRU SIGN TO BE INSTALLED AS INDICATED BY SIGNAGE VENDOR. ALL SIGNAGE TO BE PERMITTED SEPARATELY.
- INSTALL HVAC GRILLES IN NEW GYP. BD. SOFFIT
- NEW CEILING PAINT.

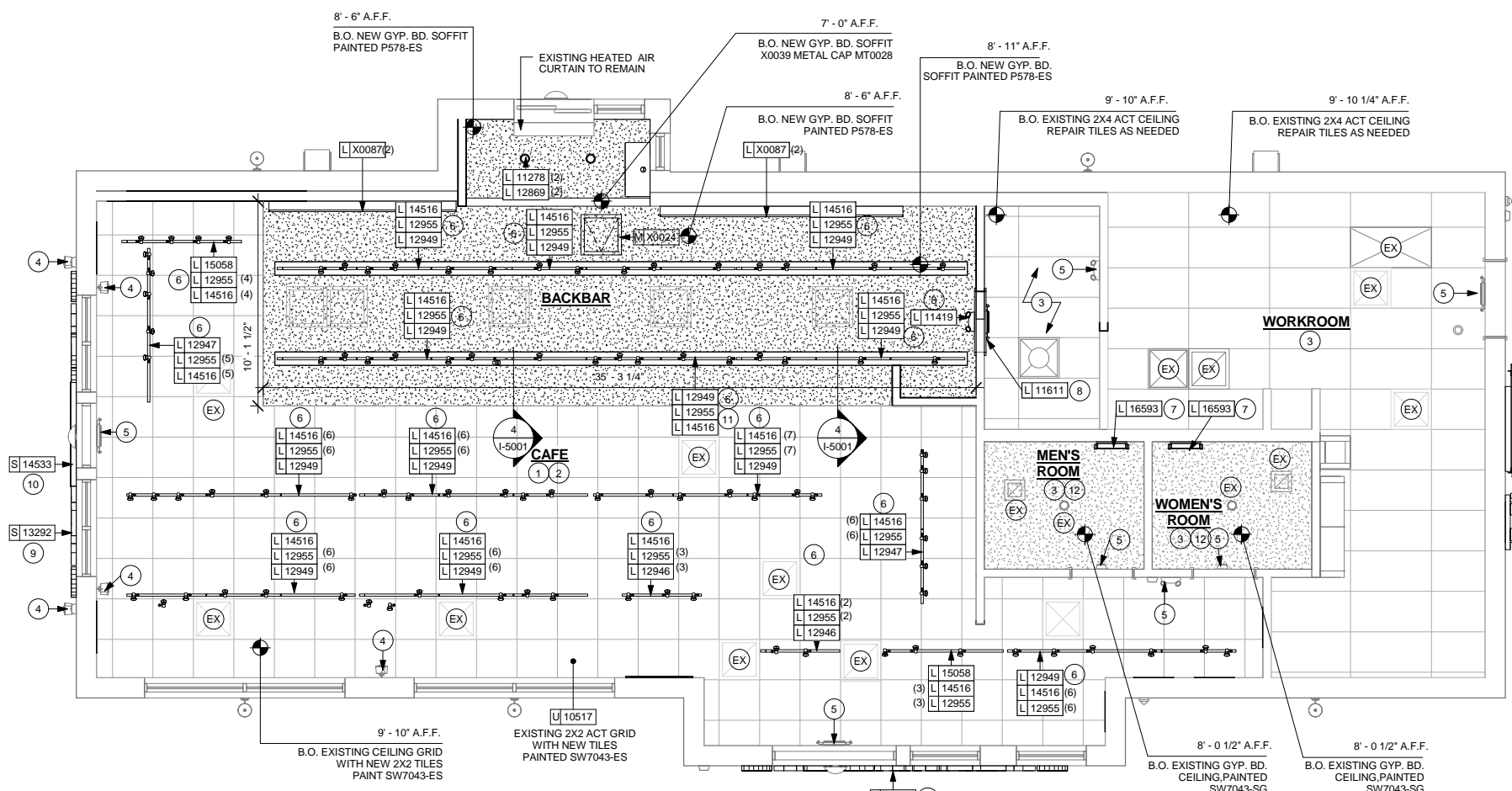
(EX) INDICATES EXISTING TO REMAIN

REFLECTED CEILING PLAN NOTES

- IF REQUIRED BY LOCAL CODE, GENERAL CONTRACTOR TO PROVIDE SEMI-RECESSED SPRINKLER HEADS WITH POLISHED CHROME ESCUTCHEONS CENTERED IN ACOUSTICAL CEILING TILE. IF PENDANT HEADS ARE REQUIRED IN GYPSUM SOFFIT OVER FRONTBAR, CONCEAL SUPPLY PIPING WITHIN SOFFIT. GENERAL CONTRACTOR TO SUBMIT SPRINKLER LAYOUT TO STARBUCKS' CONSTRUCTION MANAGER FOR APPROVAL PRIOR TO INSTALLATION.
- GENERAL CONTRACTOR TO PROVIDE AND LOCATE SPRINKLERS PER LOCAL CODES. CONTACT STARBUCKS' CONSTRUCTION MANAGER IF DESIGN INTENT IS AFFECTED.
- WHERE ACOUSTICAL CEILING MEETS WALL, PROVIDE ANGLE WALL MOLDING FOR REVEAL. MATCH CEILING GRID COLOR WHEN APPLICABLE.
- LEAVE (10) ADDITIONAL RETAIL CEILING TILES, TO MATCH RETAIL CEILING PAINT COLOR, ABOVE THE WORKROOM CEILING AT MANAGER'S DESK FOR FUTURE USE.
- PROVIDE GROMMET AT ALL CEILING PENETRATIONS FOR FIXTURES OR SUPPORTS.
- HEATING, VENTILATING, AND AIR CONDITIONING (HVAC) SHOWN FOR DESIGN INTENT ONLY. CONTACT PROJECT MANAGER IF CHANGED.
- DIFFUSERS AND RETURNS AT BACKBAR IN ACOUSTICAL CEILING TILE TO BE CENTERED IN TILE, PAINTED TO MATCH ADJACENT FINISHES, TYPICAL.
- PAINT ALL EXPOSED HVAC DUCTS, HVAC DIFFUSERS, RECESSED SPEAKERS, LIGHT TRIM RINGS, PIPING, CONDUIT AND JUNCTION BOXES THE SAME COLOR AS SPECIFIED ON SURROUNDING CEILING OR SOFFIT UNLESS NOTED OTHERWISE. TYPICAL THROUGHOUT RETAIL AREA OF STORE.
- PAINT SUBSTITUTIONS ARE NOT ALLOWED. USE STARBUCKS' NATIONAL ACCOUNT "COLOR CODE" WHEN ORDERING PAINTS.
- SEE LIGHTING DESIGN PLAN FOR LIGHTING SCHEDULE, FIXTURE TYPES AND DIMENSIONED LOCATIONS.
- ADJUST EACH TRACK HEAD AT MENU BOARD LIGHTING SO LIGHT BEAMS ARE POINTING CONSISTENTLY, JUST BELOW THE CENTER OF EACH MENU BOARD PANEL.

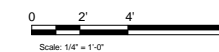
RESPONSIBILITY LEGEND

GC	GENERAL CONTRACTOR
LL	LANDLORD
VD	VENDOR
WH	WAREHOUSE



REFLECTED CEILING PLAN

Scale: 1/4" = 1'-0"



ISSUE FOR CONSTRUCTION 08/23/2017



STARBUCKS COFFEE COMPANY
2401 UTAH AVENUE SOUTH
SEATTLE, WASHINGTON 98134
(206) 319-1575

THESE DRAWINGS AND SPECIFICATIONS ARE CONFIDENTIAL AND SHALL REMAIN THE SOLE PROPERTY OF STARBUCKS CORPORATION, WHICH IS THE OWNER OF THE COPYRIGHT IN THIS WORK. THEY SHALL NOT BE REPRODUCED (IN WHOLE OR IN PART), SHARED WITH THIRD PARTIES OR USED IN ANY MANNER ON OTHER PROJECTS OR EXTENSIONS TO THIS PROJECT WITHOUT THE PRIOR WRITTEN CONSENT OF STARBUCKS CORPORATION. THESE DRAWINGS AND SPECIFICATIONS ARE INTENDED TO EXPRESS DESIGN INTENT FOR A PROTOTYPICAL STARBUCKS STORE (WHICH IS SUBJECT TO CHANGE AT ANYTIME) AND DO NOT REFLECT ACTUAL SITE CONDITIONS. NEITHER PARTY SHALL HAVE ANY OBLIGATION NOR LIABILITY TO THE OTHER (EXCEPT STATED ABOVE) UNTIL A WRITTEN AGREEMENT IS FULLY EXECUTED BY BOTH PARTIES.

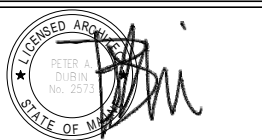
STARBUCKS TEMPLATE VERSION I2016.12.23

NORR

ARCHITECTS PLANNERS
325 N. LaSalle St., Suite 500 | Chicago, IL 60654
1.312.424.2400 | www.norr.com

ENGINEER OF RECORD

William J. Abenay, P.E.
303 Marshall Avenue
St. Louis, Missouri 63119
Phone (314) 772-1782
Fax (314) 772-0208
Engineering Consultant



PROJECT NAME:
RENOVATION OF STARBUCKS COFFEE PORTLAND, 1080 FOREST AVE.
PROJECT ADDRESS:
1080 FOREST AVENUE
PORTLAND, ME 04103
CUMBERLAND COUNTY

STORE #: 11917
PROJECT #: 37548-037
ISSUE DATE: 08/23/2017
PROGRAM MANAGER: J. BOND
DESIGNER: A. LEE
LEED® AP: N/A
PRODUCTION DESIGNER: E. VEGA
CHECKED BY: P. BENVENUTO

Revision Schedule			
Rev	Date	By	Description
1	8/15/2017		DESIGNER DIRECTION - LIGHTING
7			

SHEET TITLE:
REFLECTED CEILING PLAN
SCALE: AS SHOWN

SHEET NUMBER:
I-1108