

LIGHTING FIXTURE SCHEDULE - "L"						
DESIGN ID	COUNT	DESCRIPTION	FURNISH	INSTALL	BULB	COMMENTS
EXIT						
11419	1	EMERGENCY LIGHT DOUBLE - BLACK	VD	GC	LED 5W LOW ENERGY OR EQUAL	FSGI
11611	1	EMERGENCY EXIT LIGHT - WHITE	VD	GC	LED 5W LOW ENERGY OR EQUAL	FSG
RECESSED CAN						
11278	2	CAN - RECESSED - 5IN 125MM - BLACK	VD	GC	(1) LED A19 2700K OR EQUAL - 600LM	FSG
SCONCE						
16593	2	SCONCE - LED RESTROOM VANITY TUBULAR - OPAL GLASS AND BRUSHED NICKEL	VD	GC	INTEGRATED LED	FSGI
STRIP						
X0097	6	STRIP - LED TAPE JUNO FLEX CONNECT	VD	GC	INTEGRATED LED	FSGI - PROVIDE (2) 9 FT, (2) 12 FT IN BACKBAR SHELVES, (1) 10FT AND (1) 21 FT UNDERCOUNTER, STANDARD OUTPUT, NO CHANNEL
TRACK						
12946	2	TRACK - WITH CONNECTORS - 4FT 122CM - BLACK	VD	GC		FSGI
12947	2	TRACK - WITH CONNECTORS - 8FT 244CM - BLACK	VD	GC		FSGI
12949	12	TRACK - WITH CONNECTORS - 12FT 365CM - BLACK	VD	GC		FSGI
12955	92	TRACK - FIXTURE OPEN FLARED - 3.5IN 90MM - BLACK	VD	GC	(1) 14516 - LED PAR 20 500LM 2700K SPOT BLACK, OR EQUAL	FSGI. TO USE WITH 14673
15058	2	TRACK - WITH CONNECTORS - 6FT 183CM - BLACK	VD	GC		FSGI

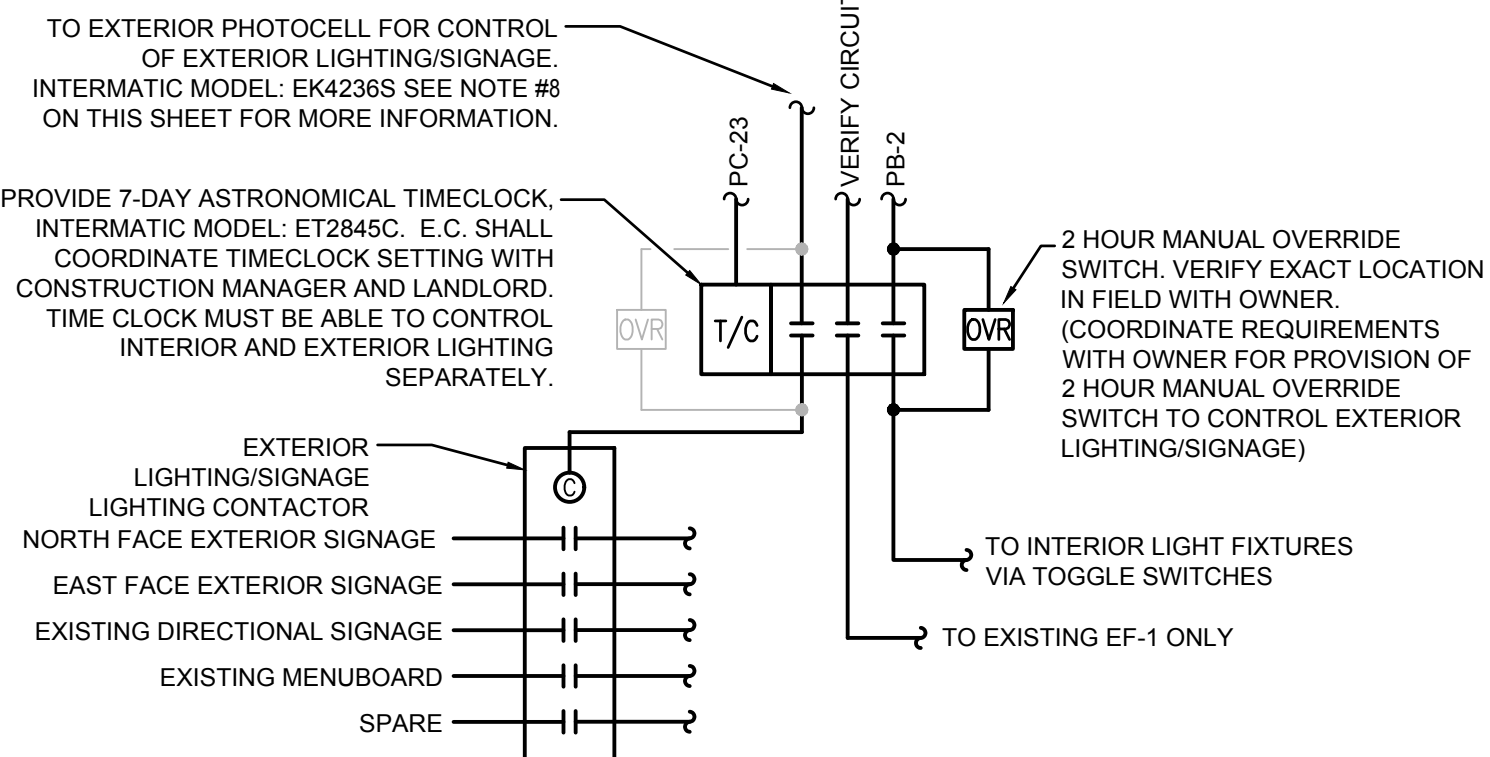
EXTERIOR SIGNAGE SCHEDULE - "S"						
DESIGN ID	COUNT	DESCRIPTION	FURNISH	INSTALL	RESP.	COMMENTS
SIGNAGE - DRIVE THRU						
14533	1	SIGN - DRIVE THRU ILLUMINATED ARROW SERIES FLUSH MOUNTED - RH - 62IN 1575MM	VD	VD	HME. GC TO COORDINATE FINAL SET UP WITH STARBUCKS VENDOR	
SIGNAGE - WORDMARK						
13292	2	SIGN - STACKED ILLUMINATED FLUSH MOUNTED - 20IN 510MM	VD	VD	HILTON. GC TO COORDINATE FINAL SET UP WITH STARBUCKS VENDOR	

DESIGN ID	COUNT	DESCRIPTION	RESP.	COMMENTS
TRACK LIMITER				
X0030	2	1A (120W), 120V CURRENT LIMITING BRKR, BK	VD	BY LIGHTING VENDOR
X0031	5	2A (240W), 120V CURRENT LIMITING BRKR, BK	VD	BY LIGHTING VENDOR

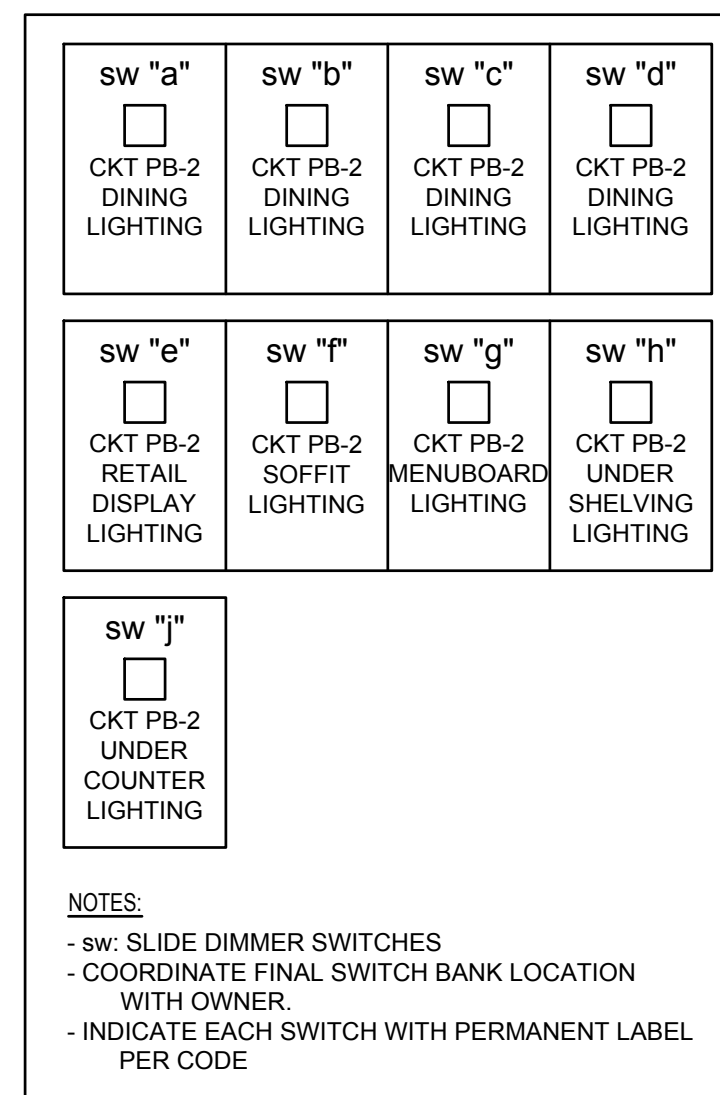
### RESPONSIBILITY LEGEND

GC	GENERAL CONTRACTOR
LL	LANDLORD
VD	VENDOR
WH	WAREHOUSE

NOTE:  
ALL SCHEDULES ARE SHOWN FOR REFERENCE ONLY. DO NOT ORDER FROM THESE SCHEDULES. SEE ARCHITECTURAL SCHEDULE SHEETS FOR ORDERING INFORMATION.



**EXTERIOR LIGHTING CONTROL DIAGRAM**  
Scale: NTS



**LIGHTING SWITCHBANK DETAIL**  
Scale: NTS

CURRENT LIMITER SCHEDULE	
1	TCL1 - 1A CURRENT LIMITING CIRCUIT BREAKER 120W COLOR TO MATCH
2	TCL2 - 2A CURRENT LIMITING CIRCUIT BREAKER 240W COLOR TO MATCH

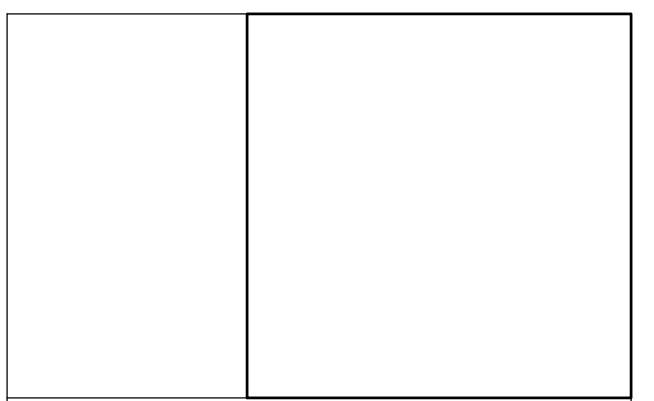
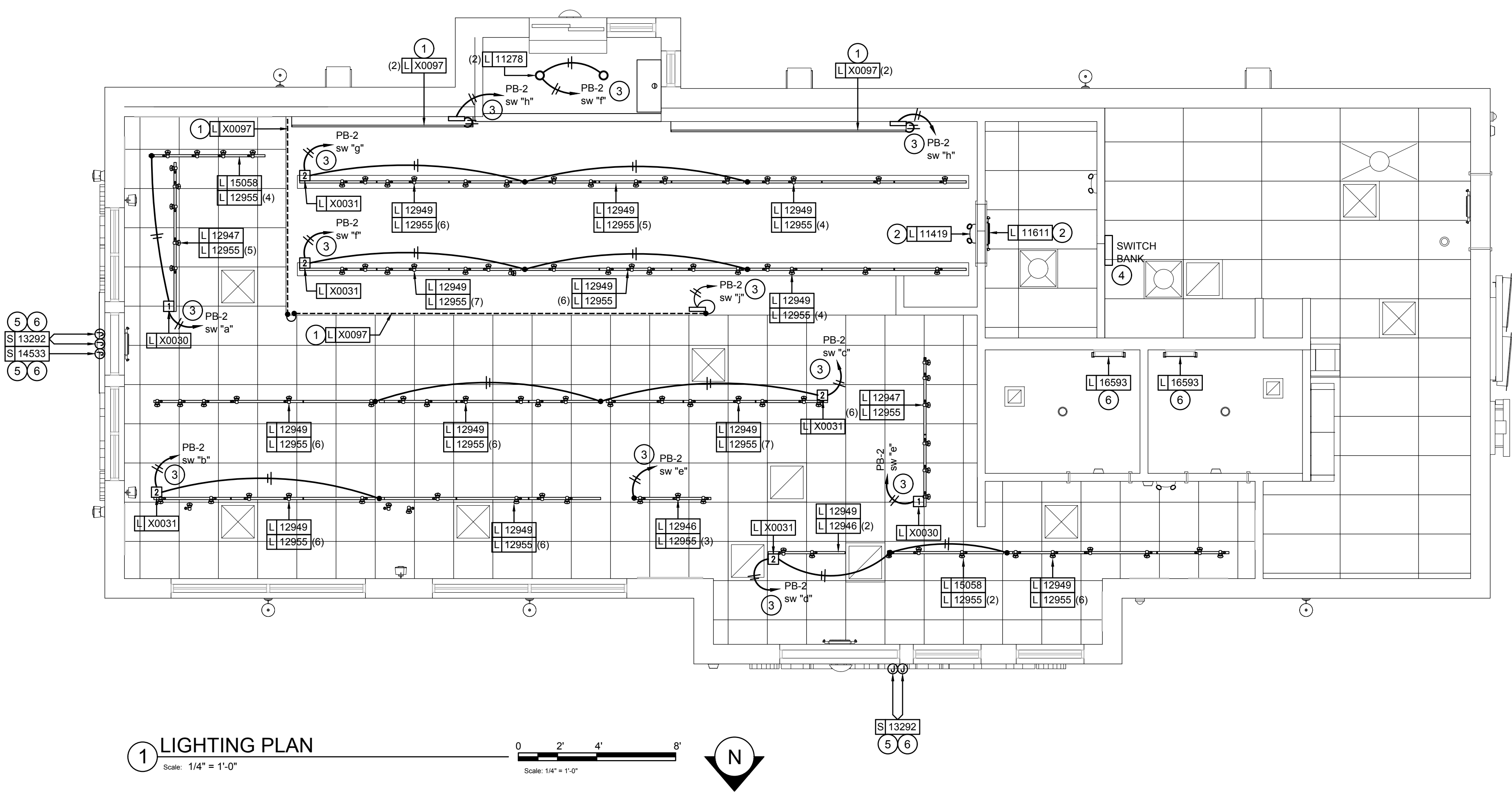
ALL SECONDARY LENGTH(S) OF TRACK FED FROM THE PRIMARY TRACK CONTAINING THE TRACK END CURRENT LIMITER SHALL BE CONNECTED TO THE 'LOAD' SIDE OF THE CURRENT LIMITING DEVICE.

### LIGHTING DESIGN PLAN NOTES

- REFER TO ARCHITECTURAL PLANS FOR DIMENSIONED FIXTURE LOCATIONS.
- ALL FIXTURES IN WORK ROOM, BACK AND FRONT LINE, ABOVE CONDIMENT CART, AND ANY OTHER AREAS WHERE EXPOSED FOOD, CLEAN EQUIPMENT OR UTENSILS, OR UNWRAPPED SINGLE SERVICE ITEMS WILL BE EXPOSED, SHALL HAVE SHATTERPROOF LAMPS IF THE FIXTURE IS NOT LENSED. ARCHITECT OF RECORD TO INCLUDE APPROPRIATE LAMPS / FIXTURES ON DRAWINGS AND SCHEDULES, AND COMPLY WITH ANY ADDITIONAL JURISDICTIONAL LIGHTING REQUIREMENT.
- PROVIDE GROMMET AT ALL CEILING PENETRATIONS FOR FIXTURES/SUPPORTS.
- CENTER EMERGENCY/EXIT LIGHTS ABOVE DOORS, UNLESS OTHERWISE NOTED.
- ADJUST FOCUS OF ALL TRACK AND RECESSED DIRECTIONAL LIGHTING TO FULLY ILLUMINATE ALL ARTWORK, MENU BOARDS, AND MERCHANDISE BAYS.
- IF PENDANT CYLINDERS CAN SUSPENDED LENGTH EXCEEDS 48" (1220MM) FROM CEILING, REPLACE WITH SURFACE MOUNTED CYLINDER CANS AND SUSPEND WITH GENERAL CONTRACTOR SUPPLIED CONDUIT AND J-BOX TO DIMENSIONED HEIGHT.
- CONTRACTOR SHALL FURNISH AS-BUILTS DRAWINGS FOR ELECTRICAL POWER SYSTEMS WITHIN 30 DAYS OF SYSTEM ACCEPTANCE.
- CONTRACTOR TO FURNISH OPERATIONS AND MAINTENANCE INSTRUCTIONS FOR SYSTEMS AND EQUIPMENT TO THE BUILDING OWNER OR DESIGNATED REPRESENTATIVE UPON COMPLETION.
- CONTRACTOR TO VERIFY LIGHTING SYSTEMS HAVE BEEN TESTED TO ENSURE PROPER CALIBRATION, ADJUSTMENT, PROGRAMING, AND OPERATION.

### SHEET NOTES

- UNDER SHELVING/CABINET TASK LIGHTING. COORDINATE LOCATION OF LOW VOLTAGE LED DRIVERS IN FIELD. VERIFY REQUIREMENTS WITH EQUIPMENT MANUFACTURER.
- EMERGENCY/EXIT LIGHT TO BE INSTALLED IN LOCATION SHOWN. CIRCUIT WITH LOCAL LIGHTING AHEAD OF ANY SWITCHING OR TIMECLOCK CONTROLS.
- INTERIOR LIGHTING FIXTURES SHALL BE CONTROLLED VIA SWITCH BANK AND ASTRONOMICAL TIME CLOCK. SEE DETAILS 2 & 3 ON THIS SHEET FOR MORE INFORMATION. LOCATION OF SWITCH BANK SHOWN FOR REFERENCE ONLY. VERIFY EXACT LOCATION WITH OWNER PRIOR TO COMMENCING WORK. RE-CIRCUIT EXISTING OR PROVIDE NEW TIMECLOCK AS REQUIRED. FURNISH AND INSTALL ALL CONDUIT, WIRE, CONNECTIONS AND TIME CLOCK MODULES NECESSARY TO INSURE A FUNCTIONAL TIME CLOCK SYSTEM.
- COORDINATE EXACT LOCATION FOR SWITCH BANK WITH GENERAL CONTRACTOR PRIOR TO COMMENCING WORK.
- NEW SIGN TO REPLACE EXISTING IN SAME LOCATION. E.C. SHALL EXTEND EXISTING CIRCUITRY AND MAKE FINAL CONNECTION. SIGNAGE SHALL BE CONTROLLED VIA PHOTOCELL AND TIMECLOCK, SEE DETAIL #2 ON THIS SHEET.
- CONNECT NEW RESTROOM LIGHTING TO EXISTING RESTROOM LIGHTING CIRCUIT AND CONTROLS.



**STARBUCKS COFFEE COMPANY**  
2401 UTAH AVENUE SOUTH  
SEATTLE, WASHINGTON 98134  
(206) 318-1575

THESE DRAWINGS AND SPECIFICATIONS ARE CONFIDENTIAL AND SHALL REMAIN THE SOLE PROPERTY OF STARBUCKS CORPORATION, WHICH IS THE OWNER OF THE COPYRIGHT IN THIS WORK. THEY SHALL NOT BE REPRODUCED (IN WHOLE OR IN PART), SHARED WITH THIRD PARTIES OR USED IN ANY MANNER ON OTHER PROJECTS OR EXTENSIONS TO THIS PROJECT WITHOUT THE PRIOR WRITTEN CONSENT OF STARBUCKS CORPORATION. THESE DRAWINGS AND SPECIFICATIONS ARE INTENDED TO EXPRESS DESIGN INTENT FOR A PROTOTYPICAL STARBUCKS STORE (WHICH IS SUBJECT TO CHANGE AT ANYTIME) AND DO NOT REFLECT ACTUAL SITE CONDITIONS. NEITHER PARTY SHALL HAVE ANY OBLIGATION NOR LIABILITY TO THE OTHER (EXCEPT STATED ABOVE) UNTIL A WRITTEN AGREEMENT IS FULLY EXECUTED BY BOTH PARTIES.

STARBUCKS TEMPLATE VERSION | 2016.12.23

**NORR**  
ARCHITECTS PLANNERS  
325 N. LESLIE ST., SUITE 500 | CHICAGO, IL 60654  
1312.424.2400 | WWW.NORR.COM

ENGINEER OF RECORD  
William J. Alkemyer, P.E.  
353 Marshall Avenue  
St. Louis, Missouri 63119  
Phone (314) 772-1782  
Fax (314) 772-0108

Engineering Consultant

PROJECT NAME:  
**RENOVATION OF STARBUCKS COFFEE PORTLAND, 1080 FOREST AVE.**

PROJECT ADDRESS:  
**1080 FOREST AVENUE PORTLAND, ME 04103 CUMBERLAND COUNTY**

STORE #:	11917
PROJECT #:	37548-037
ISSUE DATE:	08/04/2017
PROGRAM MANAGER:	J. BOND
DESIGNER:	A. LEE
LEED AP:	R. TURNER-LAUCK
PRODUCTION DESIGNER:	E. VEGA
CHECKED BY:	BMS / SWE

Revision Schedule			
Rev	Date	By	Description

SHEET TITLE:  
**LIGHTING PLAN**

SCALE: AS SHOWN

SHEET NUMBER:  
**E-1104**

