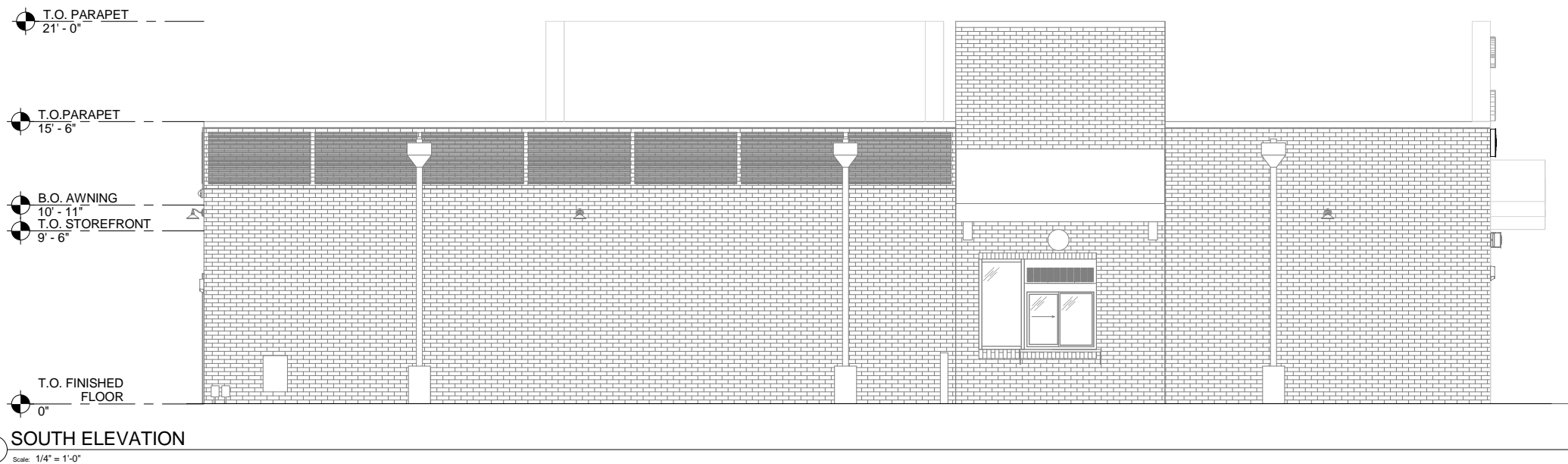


SIGNAGE UNDER SEPARATE PERMIT.
SHOWN FOR REFERENCE ONLY.



SITE SCHEDULE - "Y"					
DESIGN ID	COUNT	DESCRIPTION	FURNISH	INSTALL	COMMENTS
EXTERIOR MENU					
14087	1	MENU BOARD - DT DIGITAL ORDER SCREEN WALL MOUNT HARDWARE - FLAT BLACK MT0028	VD	VD	DSA PHOTOTECH. PROVIDED & INSTALLED BY SIGNAGE VENDOR.
14114	1	MENU BOARD - DT 3 PANEL WALL MOUNTED - 72X48IN 1830X1220MM - FLAT BLACK MT0028	VD	VD	DSA PHOTOTECH. PROVIDED & INSTALLED BY SIGNAGE VENDOR.
14116	1	MENU BOARD - DT DIGITAL ORDER SCREEN - FLAT BLACK MT0028	VD	VD	DSA PHOTOTECH. PROVIDED & INSTALLED BY SIGNAGE VENDOR.
UMBRELLA					
12147	3	UMBRELLA - BASE FOR CANOPY - BLACK MT0028	VD	GC	TUUCI LLC
16629	3	UMBRELLA - WITHOUT VALANCE - 6FT 183CM - BLACK CANVAS F0061	VD	GC	TUUCI LLC

EXTERIOR SIGNAGE SCHEDULE - "S"					
DESIGN ID	COUNT	DESCRIPTION	FURNISH	INSTALL	COMMENTS
SIGNAGE - DRIVE THRU					
14091	1	SIGN - DT DIRECTIONAL EXIT SIGN ILLUMINATED ARROW SERIES - 46IN 1170MM	VD	VD	HME. GC TO COORDINATE FINAL SET UP WITH STARBUCKS VENDOR. INSTALL OVER EXISTING FOOTING.
14106	1	SIGN - DT CLEARANCE BAR ARROW SERIES FREESTANDING	VD	VD	HME. GC TO COORDINATE FINAL SET UP WITH STARBUCKS VENDOR. INSTALL OVER EXISTING FOOTING.
14327	1	SIGN - DT DIRECTIONAL ILLUMINATED ARROW SERIES - 46IN 1170MM	VD	VD	HME. GC TO COORDINATE FINAL SET UP WITH STARBUCKS VENDOR. INSTALL OVER EXISTING FOOTING.
14533	1	SIGN - DRIVE THRU ILLUMINATED ARROW SERIES FLUSH MOUNTED - RH - 62IN 1575MM	VD	VD	HME. GC TO COORDINATE FINAL SET UP WITH STARBUCKS VENDOR. PROVIDE BLOCKING/ ELECTRICAL
SIGNAGE - PYLON DISK					
X0001	2	SIGN - PYLON DISK DRIVE THRU ILLUMINATED ARROW SERIES - 48IN 1220MM	VD	VD	HILTON. GC TO COORDINATE FINAL SET UP WITH STARBUCKS VENDOR. VENDOR TO MEASURE PANEL SIZE PRIOR TO FABRICATION AND INSTALLATION. BOTH SIDES
SIGNAGE - WORDMARK					
13292	2	SIGN - STACKED ILLUMINATED FLUSH MOUNTED - 20IN 510MM	VD	VD	HILTON. GC TO COORDINATE FINAL SET UP WITH STARBUCKS VENDOR



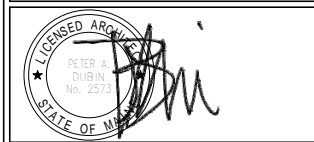
STARBUCKS COFFEE COMPANY
2401 UTAH AVENUE SOUTH
SEATTLE, WASHINGTON 98134
(206) 318-1575

THESE DRAWINGS AND SPECIFICATIONS ARE CONFIDENTIAL AND SHALL REMAIN THE SOLE PROPERTY OF STARBUCKS CORPORATION, WHICH IS THE OWNER OF THE COPYRIGHT IN THIS WORK. THEY SHALL NOT BE REPRODUCED (IN WHOLE OR IN PART), SHARED WITH THIRD PARTIES OR USED IN ANY MANNER ON OTHER PROJECTS OR EXTENSIONS TO THIS PROJECT WITHOUT THE PRIOR WRITTEN CONSENT OF STARBUCKS CORPORATION. THESE DRAWINGS AND SPECIFICATIONS ARE INTENDED TO EXPRESS DESIGN INTENT FOR A PROTOTYPICAL STARBUCKS STORE (WHICH IS SUBJECT TO CHANGE AT ANYTIME) AND DO NOT REFLECT ACTUAL SITE CONDITIONS. NEITHER PARTY SHALL HAVE ANY OBLIGATION NOR LIABILITY TO THE OTHER (EXCEPT STATED ABOVE) UNTIL A WRITTEN AGREEMENT IS FULLY EXECUTED BY BOTH PARTIES.

STARBUCKS TEMPLATE VERSION i2016.12.23

NORR
ARCHITECTS PLANNERS
325 N. LaSalle St., Suite 500 | Chicago, IL 60654
1.312.424.2400 | www.norr.com

ENGINEER OF RECORD
William J. Abenmyer, P.E.
263 Marshall Avenue
St. Louis, Missouri 63119
Phone (314) 772-1782
Fax (314) 772-0208
Engineering Consultant



PROJECT NAME:
RENOVATION OF STARBUCKS COFFEE PORTLAND, 1080 FOREST AVE.
PROJECT ADDRESS:
1080 FOREST AVENUE
PORTLAND, ME 04103
CUMBERLAND COUNTY

STORE #: 11917
PROJECT #: 37548-037
ISSUE DATE: 08/23/2017
PROGRAM MANAGER: J. BOND
DESIGNER: A. LEE
LEED® AP: N/A
PRODUCTION DESIGNER: E. VEGA
CHECKED BY: P. BENVENUTO

Revision Schedule				
Rev	Date	By	Description	

SHEET TITLE:
EXTERIOR ELEVATIONS

SCALE: AS SHOWN

SHEET NUMBER:
A-2002

ISSUE FOR CONSTRUCTION 08/23/2017