

EXTERIOR SIGNAGE SCHEDULE - "S"					
DESIGN ID	COUNT	DESCRIPTION	FURNISH	INSTALL	COMMENTS
SIGNAGE - DRIVE THRU					
14091	1	SIGN - DT DIRECTIONAL EXIT SIGN ILLUMINATED ARROW SERIES - 46IN 1170MM	VD	VD	HME. GC TO COORDINATE FINAL SET UP WITH STARBUCKS VENDOR. INSTALL OVER EXISTING FOOTING.
14106	1	SIGN - DT CLEARANCE BAR ARROW SERIES FREESTANDING	VD	VD	HME. GC TO COORDINATE FINAL SET UP WITH STARBUCKS VENDOR. INSTALL OVER EXISTING FOOTING.
14327	1	SIGN - DT DIRECTIONAL ILLUMINATED ARROW SERIES - 46IN 1170MM	VD	VD	HME. GC TO COORDINATE FINAL SET UP WITH STARBUCKS VENDOR. INSTALL OVER EXISTING FOOTING.
14533	1	SIGN - DRIVE THRU ILLUMINATED ARROW SERIES FLUSH MOUNTED - RH - 62IN 1575MM	VD	VD	HME. GC TO COORDINATE FINAL SET UP WITH STARBUCKS VENDOR. PROVIDE BLOCKING/ ELECTRICAL
SIGNAGE - PYLON DISK					
X0001	2	SIGN - PYLON DISK DRIVE THRU ILLUMINATED ARROW SERIES - 48IN 1220MM	VD	VD	HILTON. GC TO COORDINATE FINAL SET UP WITH STARBUCKS VENDOR. VENDOR TO MEASURE PANEL SIZE PRIOR TO FABRICATION AND INSTALLATION. BOTH SIDES
SIGNAGE - WORDMARK					
13292	2	SIGN - STACKED ILLUMINATED FLUSH MOUNTED - 20IN 510MM	VD	VD	HILTON. GC TO COORDINATE FINAL SET UP WITH STARBUCKS VENDOR

SIGNAGE UNDER SEPARATE PERMIT. SHOWN FOR REFERENCE ONLY.

RESPONSIBILITY LEGEND	
GC	GENERAL CONTRACTOR
LL	LANDLORD
VD	VENDOR
WH	WAREHOUSE

SHEET NOTES

- PROVIDE 3" (75MM) HIGH BLACK ACRYLIC STORE ADDRESS ON GLAZING OR PER LOCAL JURISDICTIONAL CODE REQUIREMENTS.
- STARBUCKS SIGNAGE VENDOR TO COORDINATE APPROVALS AND PERMITS FOR EXTERIOR SIGNAGE SEPARATELY AS REQUIRED. **NOT INCLUDED IN TENANT BUILD-OUT APPLICATION.**
- SIGNAGE VENDOR TO PROVIDE NEW 20IN WORDMARK SIGN AS INDICATED. VERIFY THAT EXISTING WALL BLOCKING IS SUFFICIENT FOR SUPPORT OF NEW SIGNAGE.
- SIGNAGE VENDOR TO PROVIDE NEW 62IN DRIVE THRU SIGN. VERIFY THAT EXISTING WALL BLOCKING IS SUFFICIENT FOR SUPPORT OF NEW SIGNAGE.
- GAS METER TO REMAIN
- SIGNAGE VENDOR TO PROVIDE & INSTALL WALL MOUNTED MENU BOARD. GC TO PROVIDE BLOCKING AND REQUIRED SUPPORT. PATCH & REPAIR EXTERIOR WALL W/ NINE TO NINE BRICK. ALSO COORDINATE ELECTRICAL IF NEEDED.
- SIGNAGE VENDOR TO PROVIDE & INSTALL WALL MOUNTED DIGITAL ORDER SCREEN. REFER TO DOS CONTROL BOX DETAILS FOR MORE INFORMATION. GC TO PROVIDE BLOCKING AND REQUIRED SUPPORT. PATCH & REPAIR EXTERIOR WALL W/ NINE TO NINE BRICK. ALSO COORDINATE ELECTRICAL IF NEEDED.
- EXTERIOR DOOR, EXISTING TO REMAIN

EXTERIOR ELEVATION NOTES

- GENERAL CONTRACTOR TO COORDINATE AND SCHEDULE SIGNAGE INSTALLATION WITH THE SIGNAGE CONTRACTOR PROVIDING A MINIMUM SCHEDULING NOTICE OF 4 WEEKS AND 1 WEEK PRIOR TO SCHEDULED DATE OF INSTALLATION. STARBUCKS CONSTRUCTION MANAGER TO PROVIDE GENERAL CONTRACTOR WITH SIGNAGE CONTRACTOR CONTACT INFORMATION.
- GENERAL CONTRACTOR SHALL COORDINATE WITH ELECTRICAL CONTRACTOR TO FURNISH AND INSTALL ELECTRICAL CIRCUITS INCLUDING ALL CONDUIT, WIRE, CONNECTIONS, AND BREAKER AT PANEL BOARD NECESSARY TO SERVE SIGNAGE.
- GENERAL CONTRACTOR TO PROVIDE FIRE TREATED WOOD STUD BLOCKING, OR EQUIVALENT TO SUPPORT SIGNAGE.
- SIGNAGE CONTRACTOR SHALL VERIFY SIZE AND LOCATION OF ANY AND ALL ALLOWABLE MONUMENT OR POLE SIGNAGE WITH LANDLORD AND PROVIDE SHOP DRAWING(S) PRIOR TO FABRICATION TO STARBUCKS DESIGNER FOR APPROVAL.
- SIGNAGE CONTRACTOR TO INSTALL SIGNAGE IN COMPLIANCE WITH LOCAL JURISDICTIONAL REQUIREMENTS AND OBTAIN PERMIT AND LANDLORD APPROVAL.
- SIGNAGE CONTRACTOR TO SUPPLY SHOP DRAWINGS TO STARBUCKS CONSTRUCTION MANAGER AND TO THE GENERAL CONTRACTOR AS NEEDED. GENERAL CONTRACTOR TO NOTIFY STARBUCKS CONSTRUCTION MANAGER IMMEDIATELY IF SHOP DRAWINGS OR INSTALLATION IS IN DISCREPANCY WITH STARBUCKS ARCHITECTURAL DRAWINGS.
- GENERAL CONTRACTOR TO CLEAN, PATCH AND REPAIR EXISTING EXTERIOR AS REQUIRED.



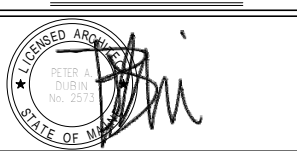
STARBUCKS COFFEE COMPANY
2401 UTAH AVENUE SOUTH
SEATTLE, WASHINGTON 98134
(206) 319-1575

THESE DRAWINGS AND SPECIFICATIONS ARE CONFIDENTIAL AND SHALL REMAIN THE SOLE PROPERTY OF STARBUCKS CORPORATION, WHICH IS THE OWNER OF THE COPYRIGHT IN THIS WORK. THEY SHALL NOT BE REPRODUCED (IN WHOLE OR IN PART), SHARED WITH THIRD PARTIES OR USED IN ANY MANNER ON OTHER PROJECTS OR EXTENSIONS TO THIS PROJECT WITHOUT THE PRIOR WRITTEN CONSENT OF STARBUCKS CORPORATION. THESE DRAWINGS AND SPECIFICATIONS ARE INTENDED TO EXPRESS DESIGN INTENT FOR A PROTOTYPICAL STARBUCKS STORE (WHICH IS SUBJECT TO CHANGE AT ANYTIME) AND DO NOT REFLECT ACTUAL SITE CONDITIONS. NEITHER PARTY SHALL HAVE ANY OBLIGATION NOR LIABILITY TO THE OTHER (EXCEPT STATED ABOVE) UNTIL A WRITTEN AGREEMENT IS FULLY EXECUTED BY BOTH PARTIES.

STARBUCKS TEMPLATE VERSION I2016.12.23

NORR
ARCHITECTS PLANNERS
325 N. LaSalle St., Suite 500 | Chicago, IL 60604
1.312.424.2400 | www.norr.com

ENGINEER OF RECORD
William J. Abenay, P.E.
303 Marshall Avenue
St. Louis, Missouri 63119
Phone (314) 772-1782
Fax (314) 772-0208
Engineering Consultant



PROJECT NAME:
RENOVATION OF STARBUCKS COFFEE PORTLAND, 1080 FOREST AVE.
PROJECT ADDRESS:
1080 FOREST AVENUE
PORTLAND, ME 04103
CUMBERLAND COUNTY

STORE #: 11917
PROJECT #: 37548-037
ISSUE DATE: 08/23/2017
PROGRAM MANAGER: J. BOND
DESIGNER: A. LEE
LEED® AP: N/A
PRODUCTION DESIGNER: E. VEGA
CHECKED BY: P. BENVENUTO

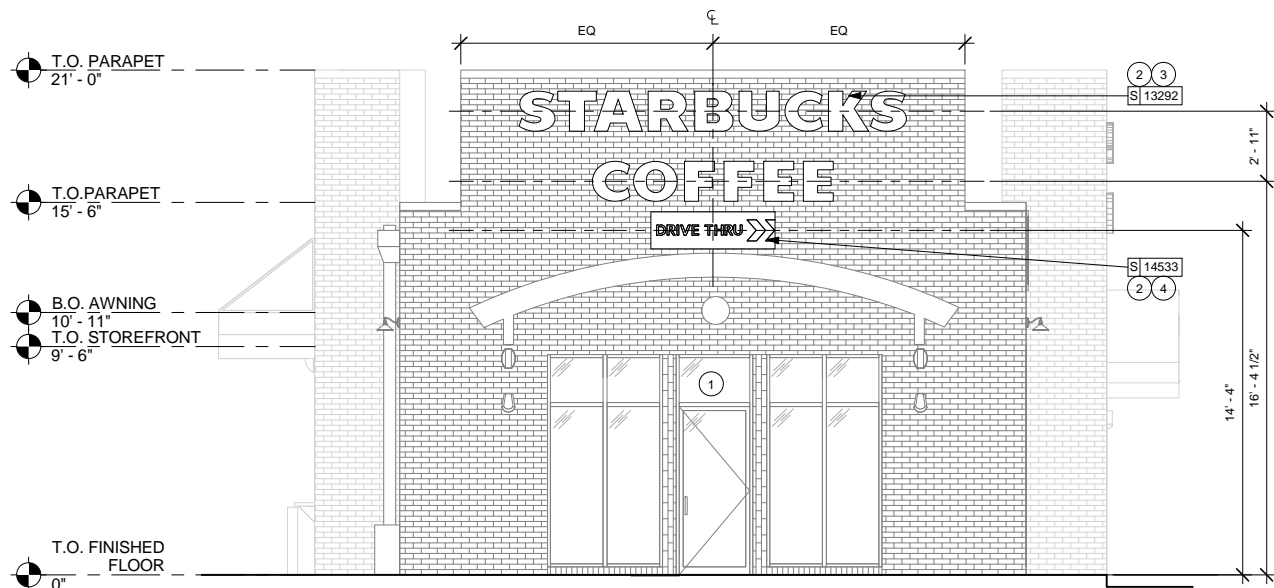
Revision Schedule			
Rev	Date	By	Description

SHEET TITLE:
EXTERIOR ELEVATIONS

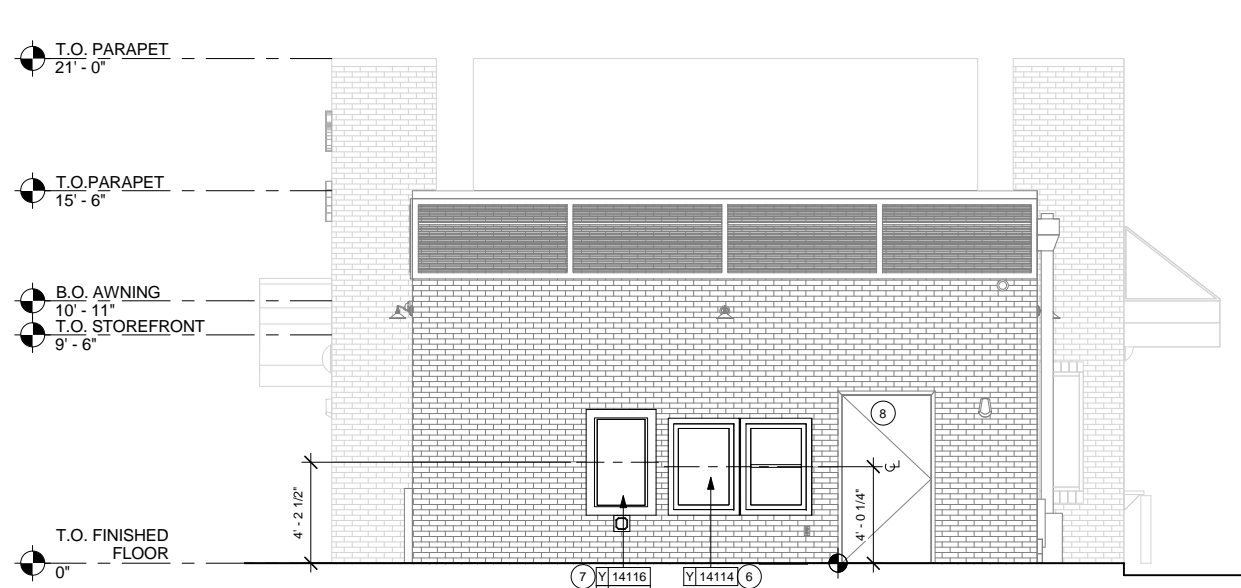
SCALE: AS SHOWN

SHEET NUMBER:
A-2001

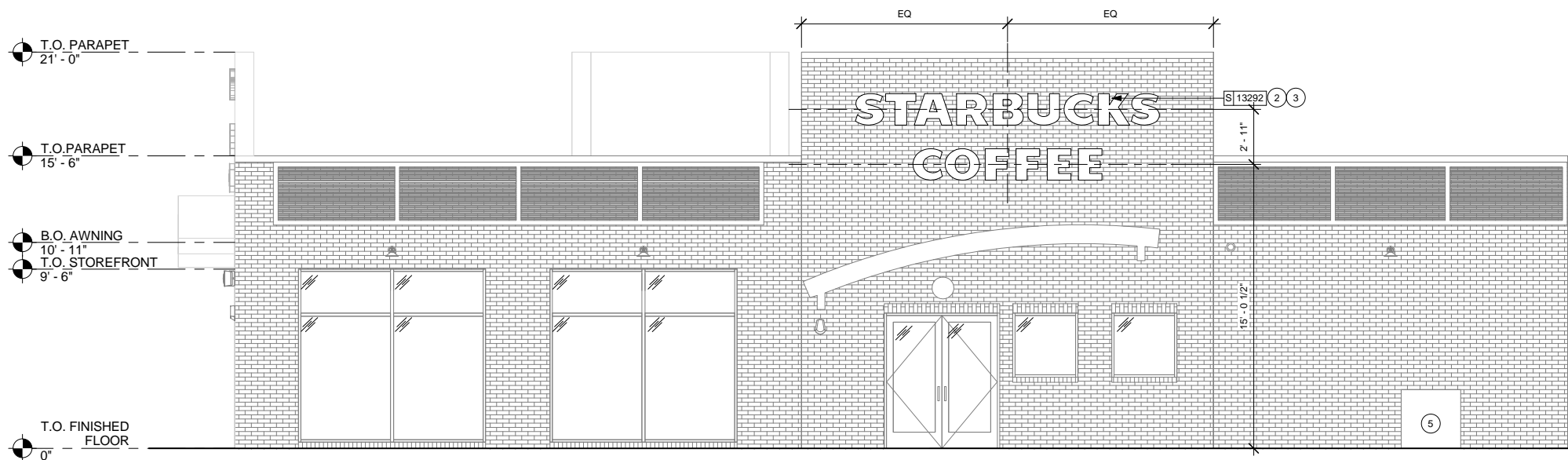
ISSUE FOR CONSTRUCTION 08/23/2017



1 EAST ELEVATION - FOREST AVENUE
Scale: 1/4" = 1'-0"



2 WEST ELEVATION.
Scale: 1/4" = 1'-0"



3 NORTH ELEVATION - POLAND AVENUE
Scale: 1/4" = 1'-0"

EXT. ELEV. LEGEND

■ DUPLEX

