

145-B-42

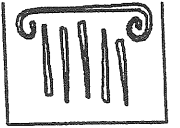
746 Stevens

Ave

Conditional Use

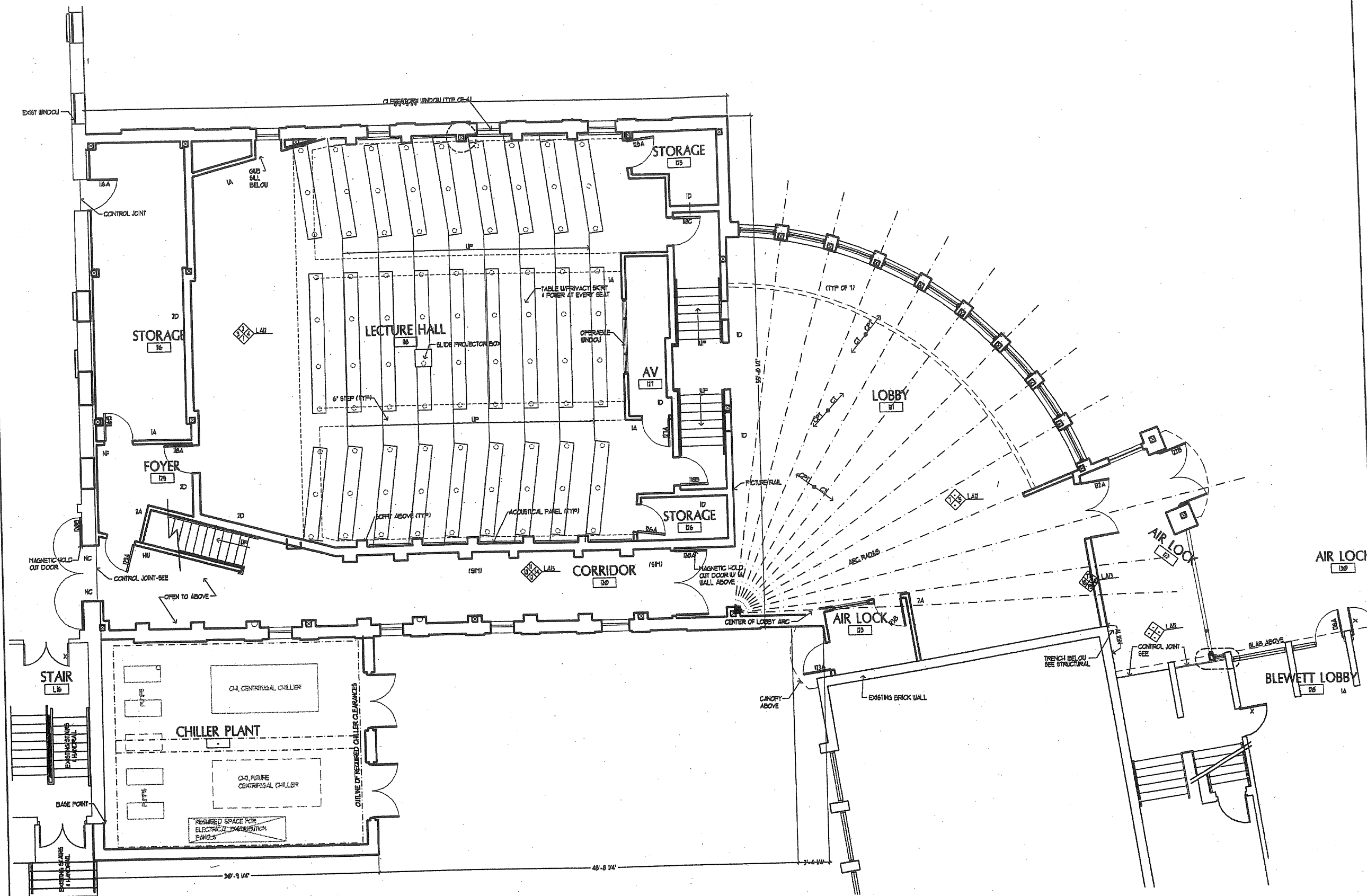
UNE

A#9.1



PORT CITY ARCHITECTURE
65 NEWBURY STREET
PORTLAND, ME 04101
207.761.9000
fax: 761.2010
lito@portcityarch.com

© COPYRIGHT
Reuse or reproduction
of the contents of this
document is not per-
mitted without written
permission of PORT
CITY ARCHITECTURE, P.A.



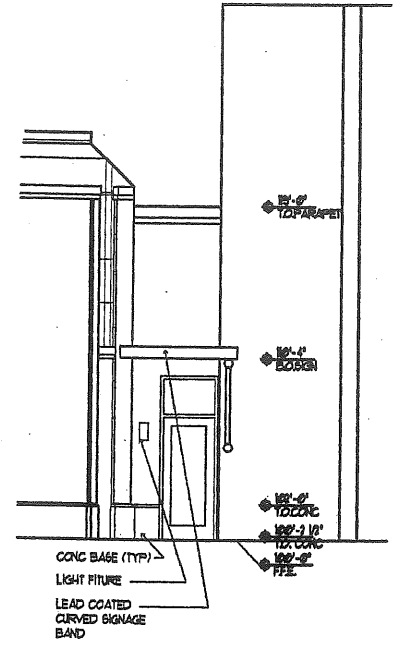
College of Health Professions
University of New England, Westbrook College Campus

JOB: 99506

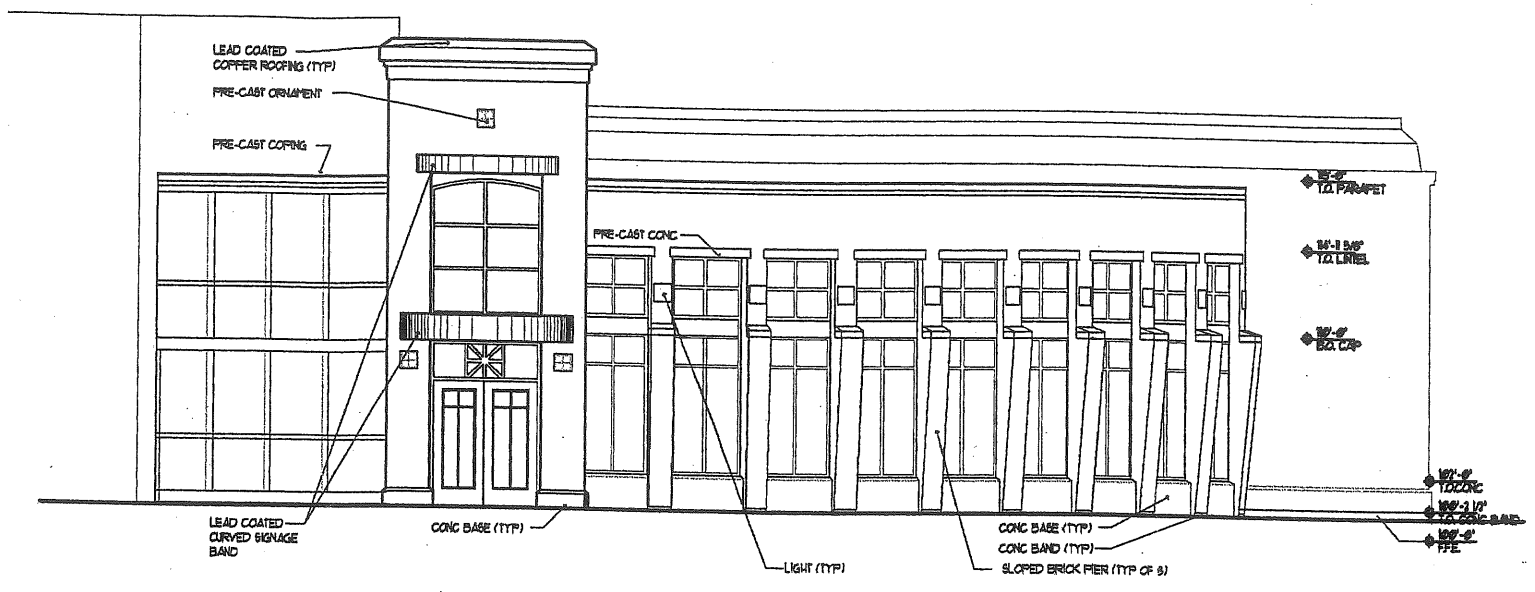
ISSUE DATE	
D.D.'s	8.23.00
APRVL.	
BID	
C.D.'s	
REVISION	
PRINT	

FIRST FLOOR PLAN
L-A1

AA 4.2
9.3



2 REAR DOOR ELEVATION
SCALE: 1/4" = 1'-0"



2 FRONT DOOR ELEVATION
SCALE: 1/4" = 1'-0"



PORT & CITY ARCHITECTURE
65 NEWBURY STREET
PORTLAND, ME 04101
207.761.9000
fax: 761.2010
lta@portcityarch.com

© COPYRIGHT
Reuse or reproduction
of the contents of this
document is not per-
mitted without written
permission of PORT & CITY
ARCHITECTURE, P.A.

College of Health Professions
UNIVERSITY OF NEW ENGLAND, Westbrook College Campus

JOB: 99506

ISSUE DATE	
D.D.'s	8/29/00
APPR'L.	
BID	
C.D.'s	
REVISION	
PRINT	

EXTERIOR ELEVATIONS

L-A6