

145-B-42

746 Stevens

Ave

Conditional Use

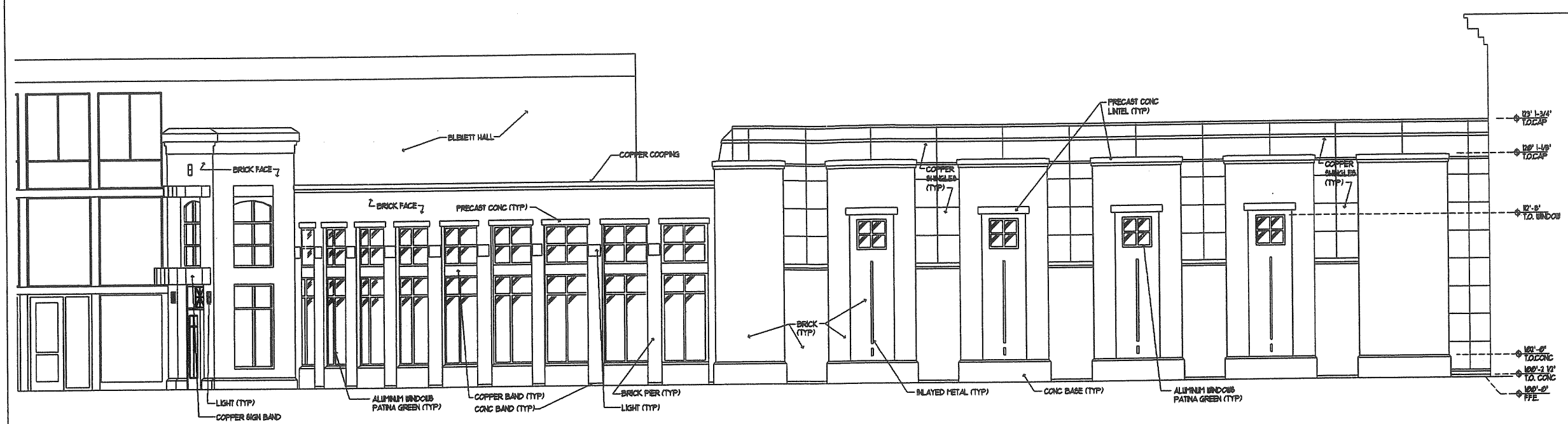
UNE

A+ 14.1  
A+ 3.1

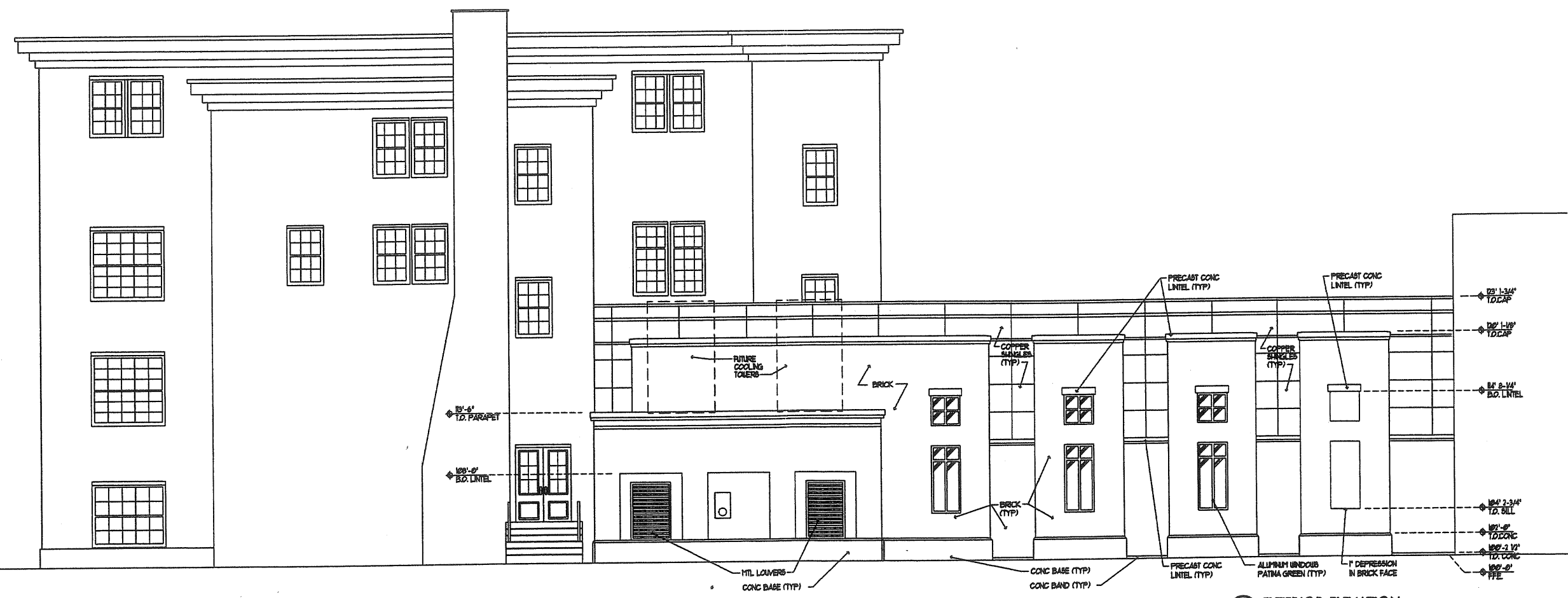


PORT CITY ARCHITECTURE  
65 NEWBURY STREET  
PORTLAND, ME 04101  
207.761.9000  
fax 761.2010  
lta@portcityarch.com

© COPYRIGHT  
Reuse or reproduction  
of the contents of this  
document is not per-  
mitted without the  
ARCHITECTURE P.A.



1 EXTERIOR ELEVATION  
SCALE: 1/4" = 1'-0"



2 EXTERIOR ELEVATION  
SCALE: 1/4" = 1'-0"

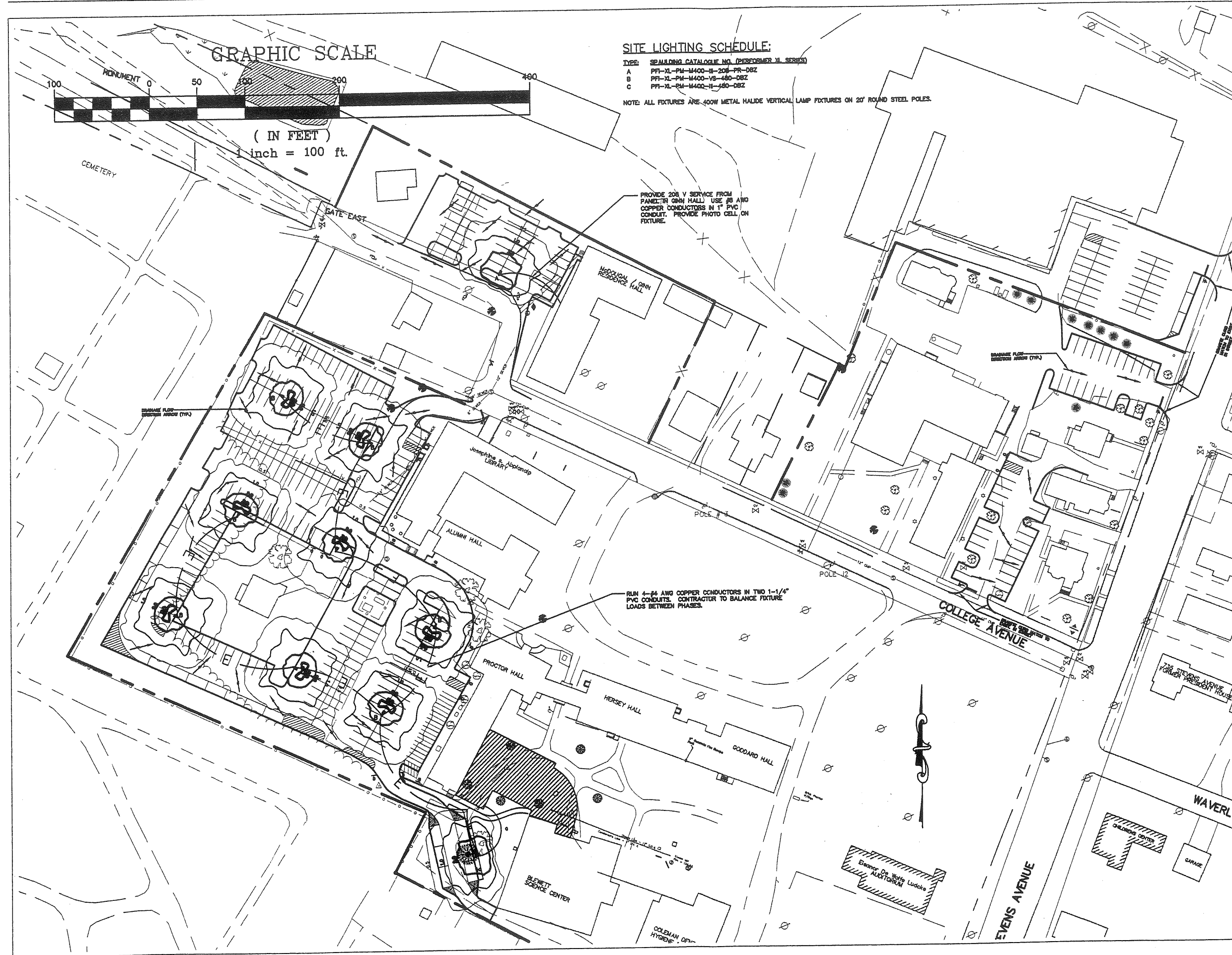
College of Health Professions  
UNIVERSITY of New England, Westbrook College Campus

JOB: 99506

ISSUE DATE	
D.D.'s	8.09.00
APRVL	
BID	
CD.'s	
REVISION	
PRINT	

EXT ELEV  
L-A5

L:\PROJECTS\2000031\2000031 SL2.dwg Tue Nov 07 13:25:34 2000 COPYRIGHT 2000 TAYLOR ENGINEERING ASSOCIATES



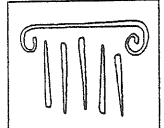
**SITE LIGHTING SCHEDULE:**

- TYPE: SPALDING CATALOGUE NO. (PERFORMER XL SERIES)
- A PFI-XL-PM-4400-18-204-TR-DBZ
  - B PFI-XL-PM-4400-18-480-DBZ
  - C PFI-XL-PM-4400-18-60-DBZ

NOTE: ALL FIXTURES ARE 400W METAL HALIDE VERTICAL LAMP FIXTURES ON 20' ROUND STEEL POLES.

PROVIDE 208 V SERVICE FROM PANELTR GRN HALL. USE #8 AWG COPPER CONDUCTORS IN 1" PVC CONDUIT. PROVIDE PHOTO CELL ON FIXTURE.

RUN 4-#4 AWG COPPER CONDUCTORS IN TWO 1-1/4" PVC CONDUITS. CONTRACTOR TO BALANCE FIXTURE LOADS BETWEEN PHASES.



**PORT CITY ARCHITECTURE**  
 65 NEWBURY STREET  
 PORTLAND, ME 04101  
 207.761.9000  
 fax: 761.2010  
 info@portcityarch.com

© COPYRIGHT  
 Reuse or reproduction of the contents of this document is not permitted without written permission of Port City Architecture, PA.



**College of Health Professions Building Renovation**  
 University of New England, Westbrook College Campus

JOB 99506

ISSUE DATE	
PRELIM	11-7-00
APPRV.	
BID	
C.D.'S	
REVISION 1	
PRINT	

SITE LIGHTING PLAN

SK-SL-2