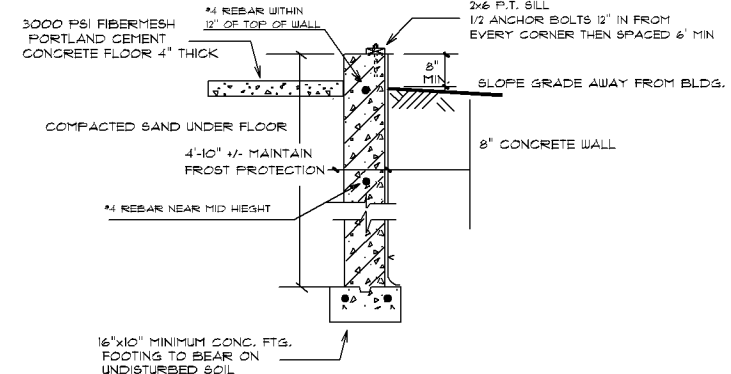


TYPICAL FOUNDATION WALL SECTION - MAIN HOUSE

REBAR IN CENTER OF WALL NO MORE THAN 6" UP FROM FOOTING. 2 STICKS TIED TO PINNED FOOTING REBAR (OPTIONAL).

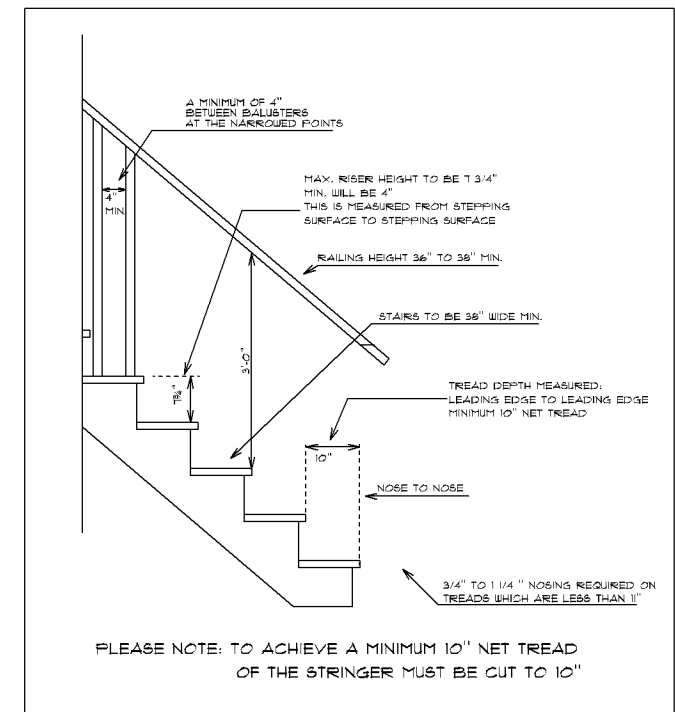
5/8" TYPE X CONTINUOUS FROM FOUNDATION TO UNDERSIDE OF ROOF SHEATHING AS WELL AS GARAGE CEILING

Separation	Material
From the residence and attic	Not less than 1/2-inch gypsum board or equivalent applied to the garage side
From all habitable rooms above the garage	Not less than 5/8-inch Type X gypsum board or equivalent
Structure(s) supporting fl. ceiling assembly used for separation required by this section	Not less than 1/2-inch gypsum board or equivalent
Garage located less than 3 feet (914 mm) from a dwelling unit on the same lot	Not less than 1/2-inch gypsum board or equivalent applied to the interior side of exterior walls that are within this area

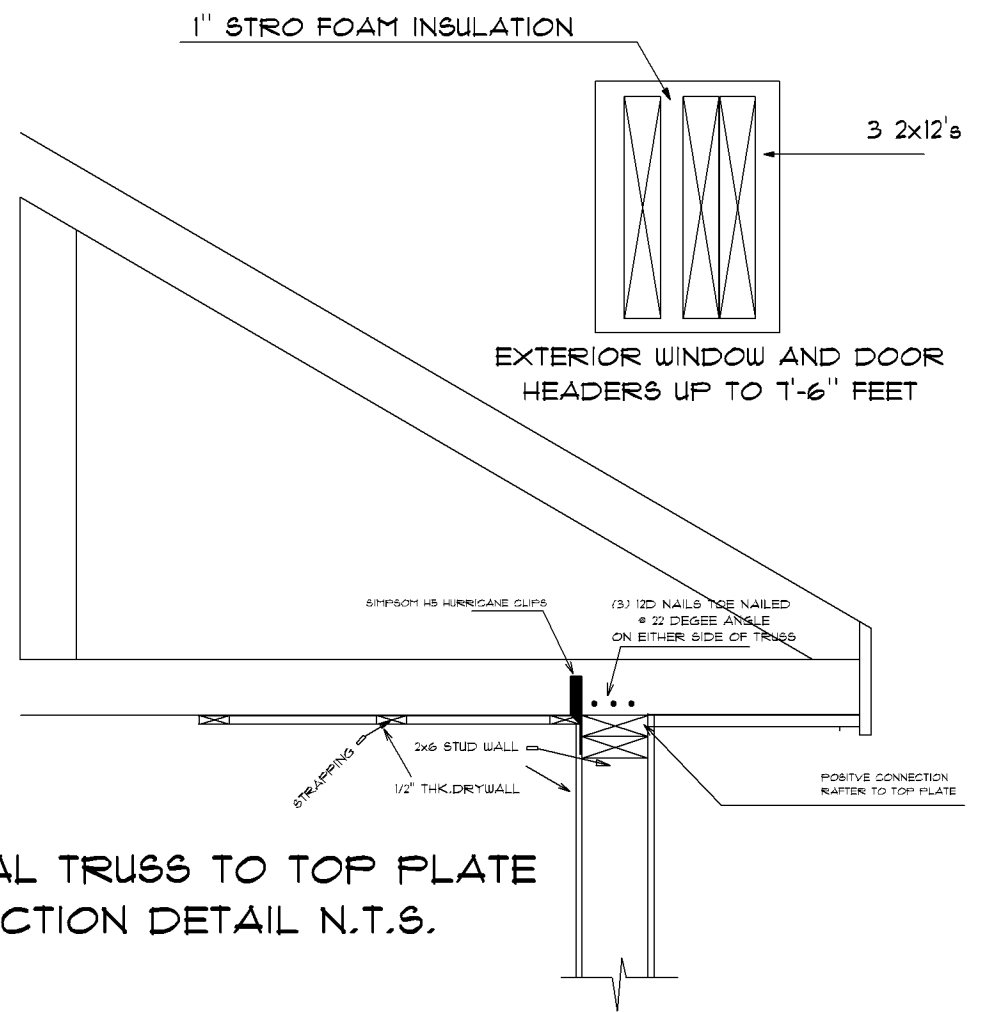


TYPICAL FROSTWALL SECTION - GARAGE

- FOUNDATION NOTES:
- ALL FINISH WALL & FOOTING HEIGHTS SHALL BE DETERMINED IN THE FIELD WITH CONTRACTOR.
 - BASEMENT WINDOW LOCATIONS & AND ROUGH OPENINGS SHALL BE CHECKED & VERIFIED IN FIELD BY CONTRACTOR, OTHERWISE IF NOT SHOWN SHALL BE DETERMINED IN FIELD BY CONTRACTOR.
 - ALL ANCHOR BOLTS SHALL BE 1/2"x10" HOOKED OR EQUIVALENT.
 - ALL LALLY COLLARS, FOOTINGS, WALLS & BEAMS SHALL BE CHECKED & ENGINEERED BY CONTRACTOR BEFORE FORMS HAVE BEEN SET.
 - ALL DAYLIGHT BASEMENT CONSIDERATIONS TO BE DETERMINED IN FIELD BY CONTRACTOR IF APPLICABLE.
 - ALL CONSIDERATIONS FOR UTILITIES ARE THE RESPONSIBILITY OF THE CONTRACTOR.
 - CONTRACTOR SHALL CHECK ALL DIMENSIONS WITH FLOOR PLAN OR ANY ADDITIONAL EQUIP. (IE. BULKHEAD ETC.) OR PRODUCT DIMENSIONS OR SPECS. ALSO MUST CHECK ALL STRUCTURAL FRAMING FOR LOAD BEARING & FOUNDATION BEFORE FORMS ARE SET.
 - CONTRACTOR SHALL ADJUST WALL AND FOOTING SIZES TO SOIL BEARING CAPACITIES AS REQ'D.
 - DO NOT BACKFILL MORE THAN 3'-0" BEFORE 1ST FLR. FRAMING JOIST & SUBFLOOR IS COMPLETE.
 - DRAIN TILE SHALL BE PLACED ON INTERIOR AND EXTERIOR OF FOUNDATION. ALL DRAIN TILE PIPE SHALL BE UNWRAPPED IN FILTER FABRIC.
 - SEE BUILDING SECTIONS FOR ADDITIONAL REINFORCING REQUIREMENTS.



PLEASE NOTE: TO ACHIEVE A MINIMUM 10" NET TREAD OF THE STRINGER MUST BE CUT TO 10"



TYPICAL TRUSS TO TOP PLATE CONNECTION DETAIL N.T.S.

SEE NOTE	LOCATION	FASTENING	CONNECTION	SEE NOTE	LOCATION	FASTENING	CONNECTION
SEE NOTE F		6d	PANEL SIDING (TO FRAMING) 5/8"	COMMON NAIL - REF TO TABLE 2308.10.4.1	FACE NAIL	4 - 3" 14 GAGE STAPLE @ 12" OC 3 - 3"x9.131" NAIL @ 12" OC 3 - 15d COMMON MINIMUM	SEE SECT. 2308.10.4.1, TABLE 2308.10.4.1) CEILING JOISTS TO PARALLEL RAFTERS
SEE NOTE F		6d	PANEL SIDING (TO FRAMING) 1/2" OR LESS	COMMON NAIL - REF TO TABLE 2308.10.4.1	FACE NAIL	4 - 3" 14 GAGE STAPLE @ 12" OC 3 - 3"x9.131" NAIL @ 12" OC 3 - 15d COMMON MIN.	SEE SECT. 2308.10.4.1, TABLE 2308.10.4.1) CEILING JOISTS, LAPS OVER PARTITIONS
SEE NOTE C		9d	SUBFLOOR UNDERLAYMENT SINGLE FLOOR COMBINATION 3/4" OR LESS	TOENAIL	5 - 3" 14 GAGE STAPLE @ 12" OC 5 - 3"x9.131" NAIL @ 12" OC 3 - 8d COMMON	CONTINUOUS HEADER TO STUD	
SEE NOTE P		2" 16 GAGE	8 PARTICLE BOARD	TOE NAIL	5 - 3" 14 GAGE STAPLE @ 12" OC 5 - 3"x9.131" NAIL @ 12" OC 3 - 8d COMMON	CEILING JOISTS TO PLATE	
SEE NOTE N		2-3/8"x9.131" NAIL @ 8d OR 9d	WOOD STRUCTURAL PANELS 1/2" OR LESS	16" OC ALONG EDGE	15d COMMON	CONTINUOUS HEADS, 2 PCS.	
SEE NOTE D, 5d. SEE NOTE C		1-3/4" 16 GAGE	8 PARTICLE BOARD	FACE NAIL	3 - 3" 14 GAGE STAPLE @ 12" OC 3 - 3"x9.131" NAIL @ 12" OC 2 - 15d COMMON	AND INTERSECTIONS TOP PLATES, LAPS	
SEE NOTE G		2-3/8"x9.131" NAIL @ 8d	WOOD STRUCTURAL PANELS 1/2" OR LESS	TOE NAIL	3" 14 GAGE STAPLE @ 8" OC 3"x9.131" NAIL @ 8" OC 8d @ 8" OC	RIM JOIST TO TOP PLATE	
SEE NOTE J		4 - 3" 14 GAGE STAPLE @ 12" OC 3 - 3"x9.131" NAIL @ 12" OC 3 - 15d COMMON	LEDDER STRIP	TOE NAIL	3 - 3" 14 GAGE STAPLE @ 8" OC 3 - 3"x9.131" NAIL @ 8" OC 3 - 8d COMMON	OR RAFTERS TO TOP PLATE BLOCKING BETWEEN JOISTS	
		5 - 3" 14 GAGE STAPLE @ 12" OC 5 - 3"x9.131" NAIL @ 12" OC 3 - 15d COMMON	JOIST TO BAND JOIST	LAP SPICE	12 - 3" 14 GAGE STAPLE TYPE FACE NAIL @ 12" OC 12 - 3"x9.131" NAIL @ 12" OC 8 - 15d COMMON	DOUBLE TOP PLATES	
		3 - 3" 14 GAGE STAPLE @ 12" OC 3 - 3"x9.131" NAIL @ 12" OC 2 - 15d COMMON	2-BY RIDGE BEAM ROOF RAFTER TO	TYPICAL FACE NAIL	3" 14 GAGE STAPLE @ 12" OC 3"x9.131" NAIL @ 12" OC 15d @ 12" OC	DOUBLE TOP PLATES	
		3 - 3" 14 GAGE STAPLE @ 12" OC 3 - 3"x9.131" NAIL @ 12" OC 2 - 15d COMMON	2-BY RIDGE BEAM ROOF RAFTER TO	FACE NAIL	3" 14 GAGE STAPLE @ 8" OC 3"x9.131" NAIL @ 8" OC 15d @ 24" OC	DOUBLE STUDS	
		3 - 3" 14 GAGE STAPLE @ 12" OC 3 - 3"x9.131" NAIL @ 12" OC 2 - 15d COMMON	JACK RAFTERS TO HIP	END NAIL	3 - 3" 14 GAGE STAPLE @ 12" OC 3 - 3"x9.131" NAIL @ 12" OC 2 - 15d COMMON	STUD TO SOLE PLATE	
		3 - 3" 14 GAGE STAPLE @ 12" OC 3 - 3"x9.131" NAIL @ 12" OC 2 - 15d COMMON	JACK RAFTERS TO HIP	TOE NAIL	3 - 3" 14 GAGE STAPLE @ 12" OC 3 - 3"x9.131" NAIL @ 12" OC 4 - 8d COMMON	TOP PLATE TO STUD	
		4 - 3" 14 GAGE STAPLE @ 12" OC 4 - 3"x9.131" NAIL @ 12" OC 3 - 15d COMMON	COLLAR TIE TO RAFTER	END NAIL	3 - 3" 14 GAGE STAPLE @ 12" OC 3 - 3"x9.131" NAIL @ 12" OC 2 - 15d COMMON	AT BRACED WALL PANEL SOLE PLATE TO JOIST OR BLOCKING	
		3 - 3" 14 GAGE STAPLE @ 12" OC 3 - 3"x9.131" NAIL @ 12" OC 2 - 15d COMMON	BUILT-UP GIRDER & BEAMS	TYPICAL FACE NAIL	3" 14 GAGE STAPLE @ 12" OC 3"x9.131" NAIL @ 8" OC 15d @ 12" OC	OR BLOCKING SOLE PLATE TO JOIST	
		3" 14 GAGE STAPLE @ 24" OC 3"x9.131" NAIL @ 24" OC 20d COMMON 37" OC	BUILT-UP GIRDER & BEAMS	TOENAIL EACH END	3 - 3" 14 GAGE STAPLE @ 12" OC 3 - 3"x9.131" NAIL @ 12" OC 3 - 8d COMMON	BRIDGING TO JOIST	
		16" OC 16" OC 24" OC	BUILT-UP CORNER STUDS	TOENAIL	3 - 3" 14 GAGE STAPLE @ 12" OC 3 - 3"x9.131" NAIL @ 12" OC 3 - 8d COMMON	JOIST TO SILL OR GIRDER	
		2 - 3" 14 GAGE STAPLE @ 12" OC 2 - 3"x9.131" NAIL @ 12" OC 15d COMMON	EACH STUD & PLATE 1" DIAGONAL BRACE TO				
		3 - 3" 14 GAGE STAPLE @ 12" OC 3 - 3"x9.131" NAIL @ 12" OC 3 - 8d COMMON	RAFTER TO PLATE				

FASTENING SCHEDULE (SEE TABLE 2304.9.1 M.E.S. RESIDENTIAL CONSTRUCTION CODE FOR COMPLETE DETAILS)