

**GENERAL SHEET NOTES:**

- SEE ARCHITECTURAL SHEETS FOR WALL TYPES AND FIRE STOPPING OF JOINTS AND PENETRATIONS.
- EXTEND WALL RATINGS TO UNDERSIDE OF FLOOR DECK OR ROOF DECK ABOVE UNLESS NOTED OTHERWISE. WHERE WALL INTERSECTS A PARALLEL STRUCTURAL BEAM, BEAM SHALL HAVE GYPSUM ENCLOSURE TO PROVIDE THE SAME FIRE RESISTANCE AS THE WALL.
- STAIR WALLS AND CEILINGS SHALL NOT BE PENETRATED FROM EITHER SIDE WITH EXCEPTION OF CONDUIT FOR LIGHTING OF THE STAIR OR SPRINKLER PIPING.
- SHADED AREAS INDICATE A RATING IS REQUIRED ON THE FLOOR/CEILING ASSEMBLY ABOVE.

**80% SUBMISSION**

DESIGNED BY: LEC  
 CHECKED BY: SCS  
 PROJECT: 21502.10

UNIVERSITY OF NEW ENGLAND  
 PORTLAND CAMPUS  
 STEVEN AVENUE ARMORY  
 716 STEVEN AVENUE  
 PORTLAND, MAINE 04103  
 (1) 207-665-0171

RENOVATIONS TO THE  
 STEVEN AVENUE ARMORY

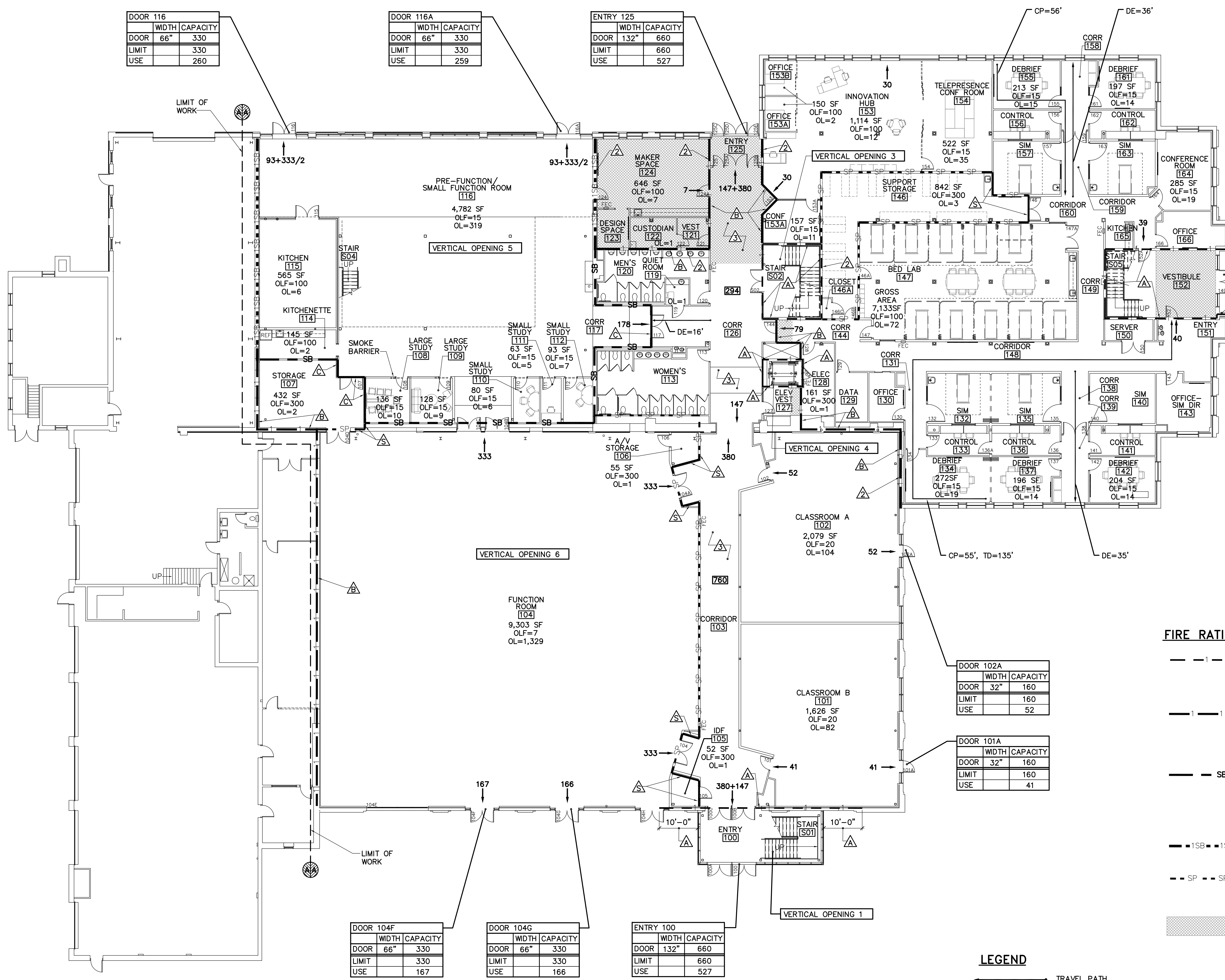
FIRST FLOOR  
 EGRESS AND  
 FIRE RATING  
 PLAN

SCALE: AS NOTED

DATE: 04-08-16

DWG. **G-102**

SHEET: **XXX** OF .



DOOR 116		
WIDTH	CAPACITY	
66"	330	
LIMIT	330	
USE	260	

DOOR 116A		
WIDTH	CAPACITY	
66"	330	
LIMIT	330	
USE	259	

ENTRY 125		
WIDTH	CAPACITY	
132"	660	
LIMIT	660	
USE	527	

VERTICAL OPENING 2		
DOOR	WIDTH	CAPACITY
149	64"	320
STAIR	NA	-
LIMIT	320	
USE	79*	

\* SECOND FLOOR USE IS 102

DOOR 102A		
WIDTH	CAPACITY	
32"	160	
LIMIT	160	
USE	52	

DOOR 101A		
WIDTH	CAPACITY	
32"	160	
LIMIT	160	
USE	41	

DOOR 104F		
WIDTH	CAPACITY	
66"	330	
LIMIT	330	
USE	167	

DOOR 104G		
WIDTH	CAPACITY	
66"	330	
LIMIT	330	
USE	166	

ENTRY 100		
WIDTH	CAPACITY	
132"	660	
LIMIT	660	
USE	527	

**KEYNOTES: (THIS SHEET ONLY)**

- ENTRY 100 AND ENTRY 125 BOTH SERVE AS MAIN EXITS FOR THE BUILDING. THESE PROVIDE CAPACITY FOR HALF OF ASSEMBLY OCCUPANTS.
  - PRE-FUNCTION/SMALL FUNCTION ROOM AND ADJACENT STUDY ROOMS: 356/2=178
  - FUNCTION ROOM: 1,329/2=665
  - CLASSROOMS: (104+82)/2=93
  - 175+665+93=933, CAPACITY IS 1,320
- ASSEMBLY AND BUSINESS OCCUPANCIES ARE ISOLATED BY 1 HOUR FIRE BARRIER OCCUPANCY SEPARATION.
- PENDING AHJ REVIEW, CORRIDORS 103 AND 126 AND ENTRY 102 MAY BE REQUIRED TO BE AN EXIT PASSAGEWAY WITH 1-HOUR FIRE BARRIER WALLS AND CEILING AND 60-MINUTE OPENING PROTECTION.

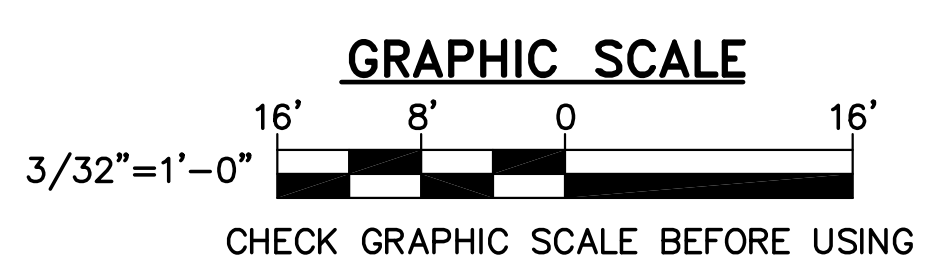
**FIRE RATINGS/FIRE RATINGS KEYNOTES**

- FIRE BARRIER WALL: 1-HOUR FIRE RESISTANCE RATING WITH 60-MINUTE OPENING PROTECTION AND 1-HOUR FIRESTOPPING AT PENETRATIONS AND JOINTS.
- OCCUPANCY SEPARATION WALL: 1-HOUR FIRE RESISTANCE RATING WITH 45-MINUTE OPENING PROTECTION AND 1-HOUR FIRESTOPPING AT PENETRATIONS AND JOINTS.
- SMOKE BARRIER WALLS: SMOKE RESISTANT SEALANT AT PENETRATIONS AND JOINTS. SELF-CLOSING AND LATCHING DOORS WITH GASKETING. SMOKE DAMPERS AT DUCTWORK PENETRATIONS.
- COMBINATION 1-HOUR FIRE BARRIER AND SMOKE BARRIER WITH PROTECTION AS IDENTIFIED ABOVE.
- SMOKE PARTITION WALLS: SMOKE RESISTANT SEALANT AT PENETRATIONS AND JOINTS AND SELF-CLOSING AND LATCHING DOORS.

OCCUPANCY SEPARATION HORIZONTAL ASSEMBLY: 1-HOUR FIRE RATED HORIZONTAL FLOOR/CEILING ASSEMBLY WITH 45-MINUTE OPENING PROTECTION AND 1-HOUR FIRESTOPPING AT PENETRATIONS AND JOINTS.

**LEGEND**

- TRAVEL PATH
- XXX → OCCUPANTS TRAVELING TOWARDS EXIT
- CP COMMON PATH OF TRAVEL
- DE DEAD-END LENGTH
- LF LINEAR FEET
- OL OCCUPANT LOAD
- OLF OCCUPANT LOAD FACTOR
- SF SQUARE FEET
- TD TRAVEL DISTANCE



**1 FIRST FLOOR EGRESS AND FIRE RATING PLAN**  
 6-102/SCALE: 3/32"=1'-0"

