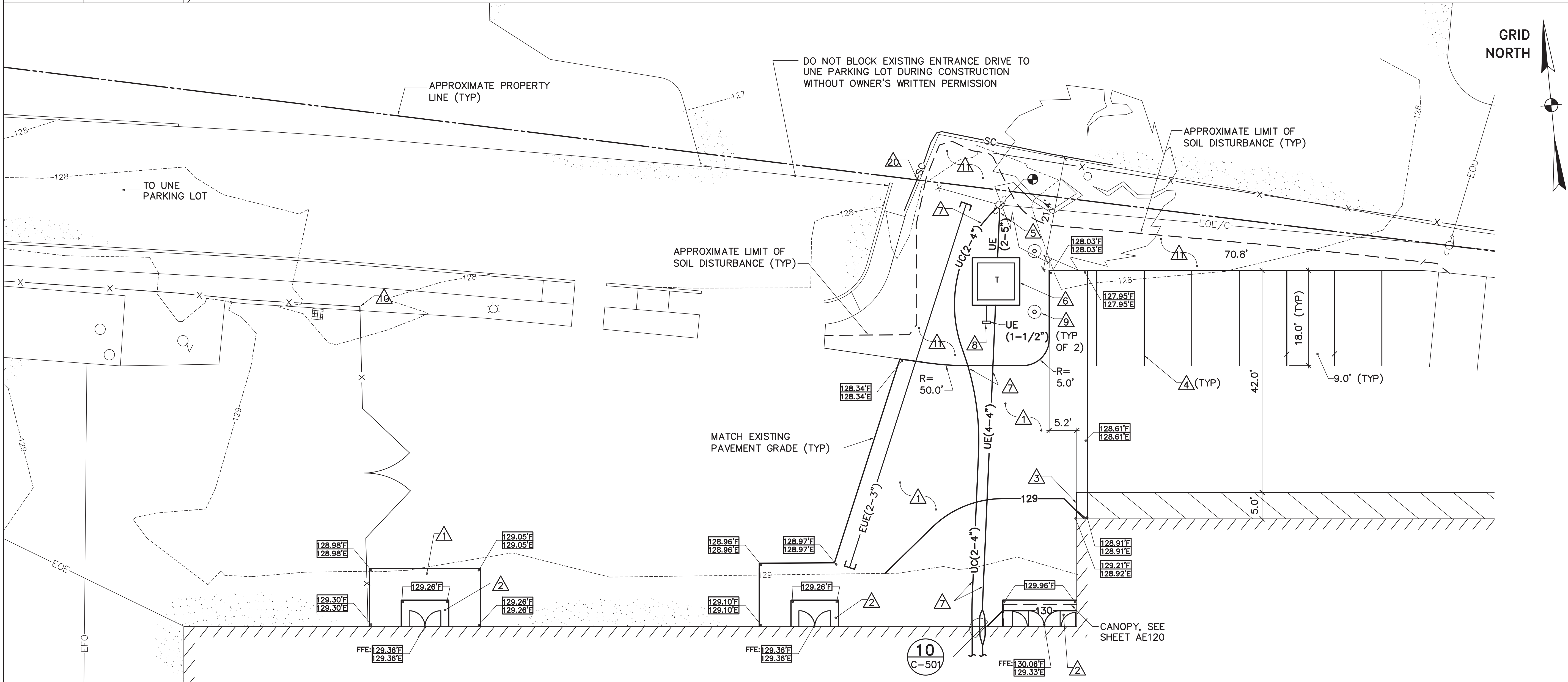


1 NORTH ENTRANCE REMOVALS PLAN
 CS101 SCALE: 1"=10'

KEYNOTES:(REMOVALS PLAN ONLY)

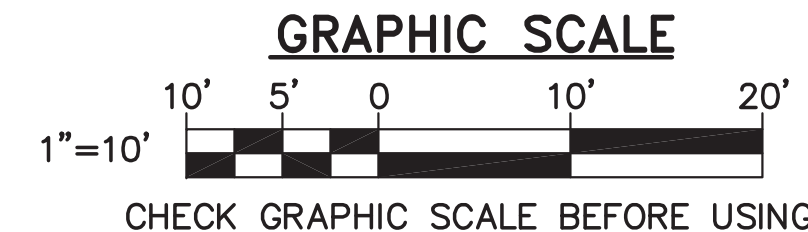
- 1. EXISTING ASPHALT CONCRETE PAVEMENT.
- 2. EXISTING ASPHALT CONCRETE PAVEMENT SIDEWALK.
- 3. EXISTING TURF.
- 4. EXISTING ±4' TALL CHAIN LINK FENCE.
- 5. EXISTING ±8' TALL CHAIN LINK FENCE WITH BARBED WIRE.
- 6. EXISTING CHAIN LINK FENCE GATE.
- 7. EXISTING ASPHALT CONCRETE CURB.
- 8. EXISTING ±24" DIAMETER TREE.
- 9. NOT USED.
- 10. SAWCUT AND REMOVE EXISTING ASPHALT CONCRETE PAVEMENT, ±4" THICK.
- 11. STRIP EXISTING TOPSOIL, ±4" THICK.
- 12. REMOVE EXISTING OVERHEAD WIRE (SEE SHEETS CX101 AND ED101).
- 13. REMOVE EXISTING PRIMARY ELECTRIC SERVICE WIRE, CONDUIT, TRANSFORMER AND REINFORCED CONCRETE TRANSFORMER PAD. COORDINATE TIMING OF REMOVAL AND DISCONNECTION OF ELECTRICAL SERVICE WITH CMP AND THE OWNER.
- 14. REMOVE EXISTING UNDERGROUND CONDUIT AND SEAL WALL PENETRATIONS WATERTIGHT WITH NON-SHRINK GROUT. DO NOT REMOVE UNTIL NEW SERVICE IS ACTIVE. CAP AND ABANDON CONDUIT TO REMAIN.
- 15. REMOVE WIRING FROM EXISTING CONDUIT. CUT AND CAP ENDS OF CONDUIT TO REMAIN AND ABANDON IN PLACE.
- 16. REMOVE EXISTING CONDUIT.
- 17. REMOVE EXISTING ±6" DIAMETER METAL BOLLARD AND CONCRETE FOUNDATION.
- 18. REMOVE EXISTING ±8' HIGH CHAIN LINK FENCE WITH BARBED WIRE, POSTS AND CONCRETE POST FOUNDATIONS. PATCH HOLES IN ASPHALT CONCRETE PAVEMENT/TURF FROM POST/FOUNDATION REMOVALS.
- 19. REMOVE EXISTING CHAIN LINK FENCE SLIDE GATE, POSTS, AND CONCRETE FOUNDATIONS. PATCH HOLES IN ASPHALT CONCRETE PAVEMENT/TURF FROM POST/FOUNDATION REMOVALS.
- 20. REMOVE EXISTING CHAIN LINK FENCE PEDESTRIAN GATE, POSTS AND CONCRETE FOUNDATION. PATCH HOLES IN ASPHALT CONCRETE PAVEMENT/TURF FROM POST/FOUNDATION REMOVALS.
- 21. REMOVE EXISTING FENCE POST AND CONCRETE FOUNDATION.
- 22. REMOVE EXISTING PAVEMENT MARKINGS USING HIGH PRESSURE WATER, SANDBLASTING, SOLVENTS, OR OTHER METHOD APPROVED BY THE MAINE DEPARTMENT OF TRANSPORTATION.
- 23. NOT USED.
- 24. SEDIMENT CONTROL WATTLE. SEE DETAIL 2/C-001



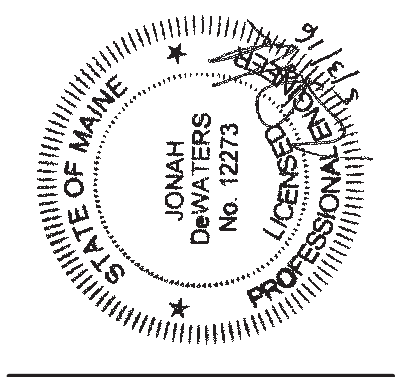
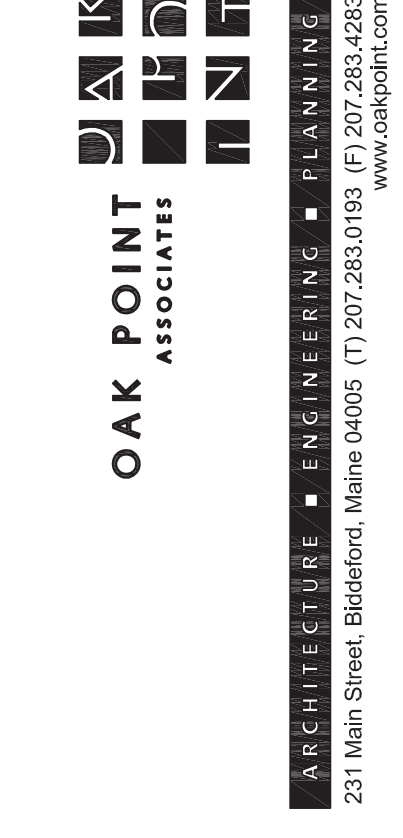
2 NORTH ENTRANCE SITE PLAN
 CS101 SCALE: 1"=10'

KEYNOTES:(SITE PLAN ONLY)

- 1. HEAVY DUTY ASPHALT CONCRETE PAVEMENT. SEE DETAIL 1/C-501 (SIM, PROVIDE 15" THICK SUBBASE LAYER AND 2-3/4" THICK BINDER COURSE)
- 2. REINFORCED CONCRETE STOOP. SEE SHEET SB101
- 3. PAVEMENT MARKING - MATCH EXISTING WIDTH (±4") AND COLOR (YELLOW)
- 4. PAVEMENT MARKING - 4" WIDE, WHITE
- 5. UNDERGROUND ELECTRIC (PRIMARY) LINE IN CONDUIT TRENCH. SEE DETAIL 7/C-501
- 6. TRANSFORMER (BY CMP) ON REINFORCED CONCRETE TRANSFORMER PAD. SEE DETAIL 8/C-501
- 7. UNDERGROUND ELECTRIC (SECONDARY)/COMMUNICATION LINES IN CONDUIT TRENCH. SEE DETAILS 10/C-501 (FOR WALL PENETRATION) AND 6/C-501
- 8. METER PEDESTAL. SEE DETAIL 9/C-501
- 9. BOLLARD. SEE DETAIL 3/C-501
- 10. 3" DIAMETER GALVANIZED CORNER POST. SET IN 12" DIAMETER X 4' DEEP FORMED CONCRETE BASE. MODIFY AND REINSTALL EXISTING FENCE FABRIC AND TOP RAILS, CONNECTED TO NEW POST.
- 11. 6" TOPSOIL, SEED, FERTILIZER AND MULCH ALL DISTURBED AREAS UNLESS INDICATED OTHERWISE
- 12. NOT USED.
- 13. SEDIMENT CONTROL WATTLE. SEE DETAIL 2/C-001



FOR PERMITTING PURPOSES ONLY



DESIGNED BY: JSD
 DRAWN BY: JLD
 CHECKED BY: JLD
 PROJECT: 21502.10

UNIVERSITY OF NEW ENGLAND
 PORTLAND CAMPUS
 STEVEN AVENUE ARMORY
 716 STEVENS AVE
 PORTLAND, MAINE 04103
 T (207)285-0171

RENOVATIONS TO THE
 STEVENS AVENUE ARMORY

NORTH
 ENTRANCE
 PLANS

SCALE: AS NOTED
 DATE: 05-03-16

DWG. **CS101**

SHEET: 5 of 9