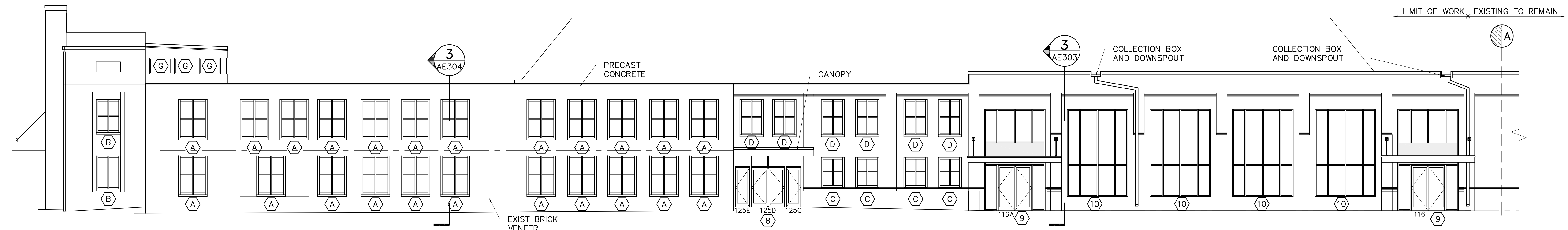


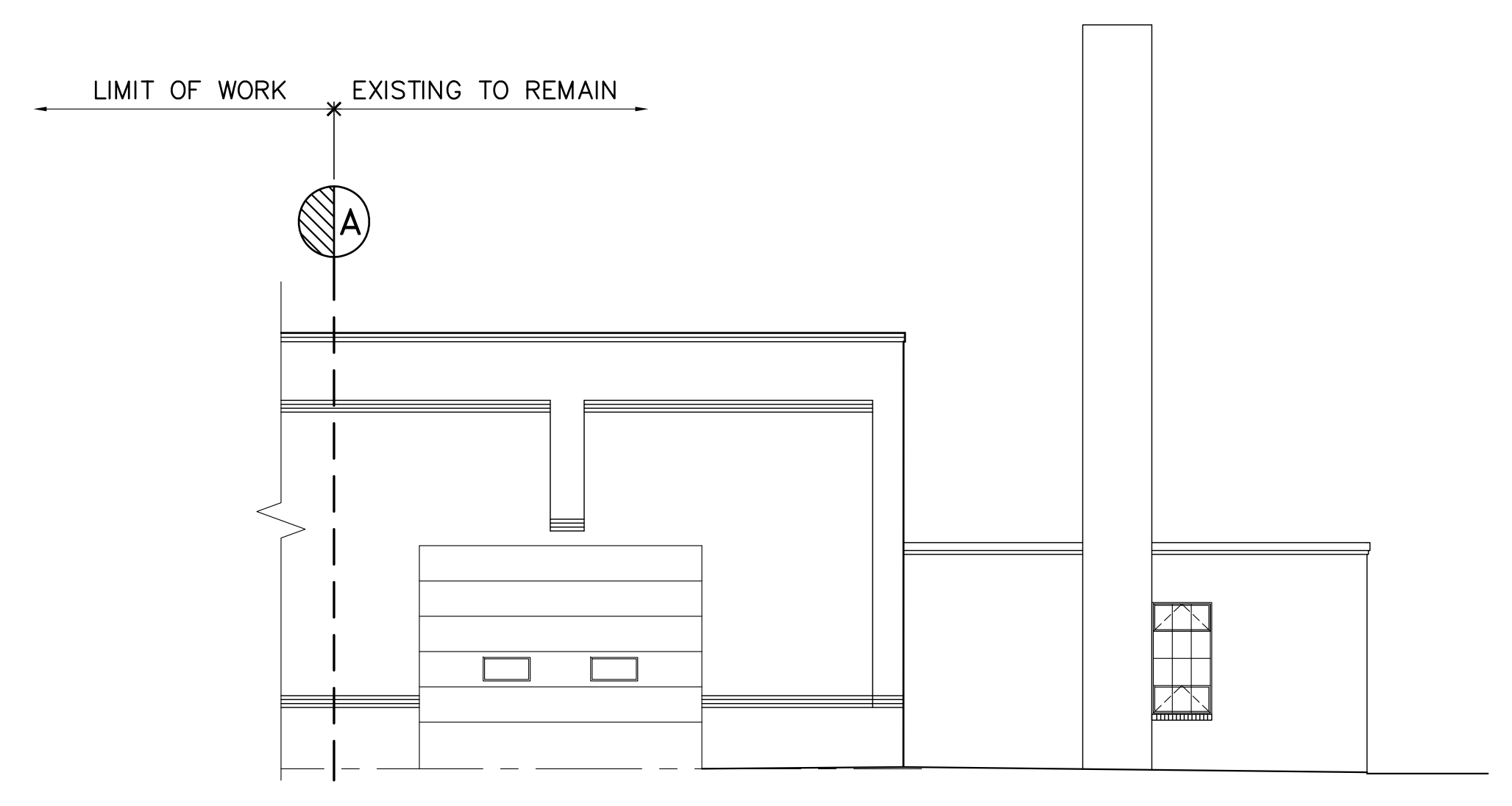
1 SOUTH ELEVATION
 AE201 SCALE: 1/8"=1'-0"



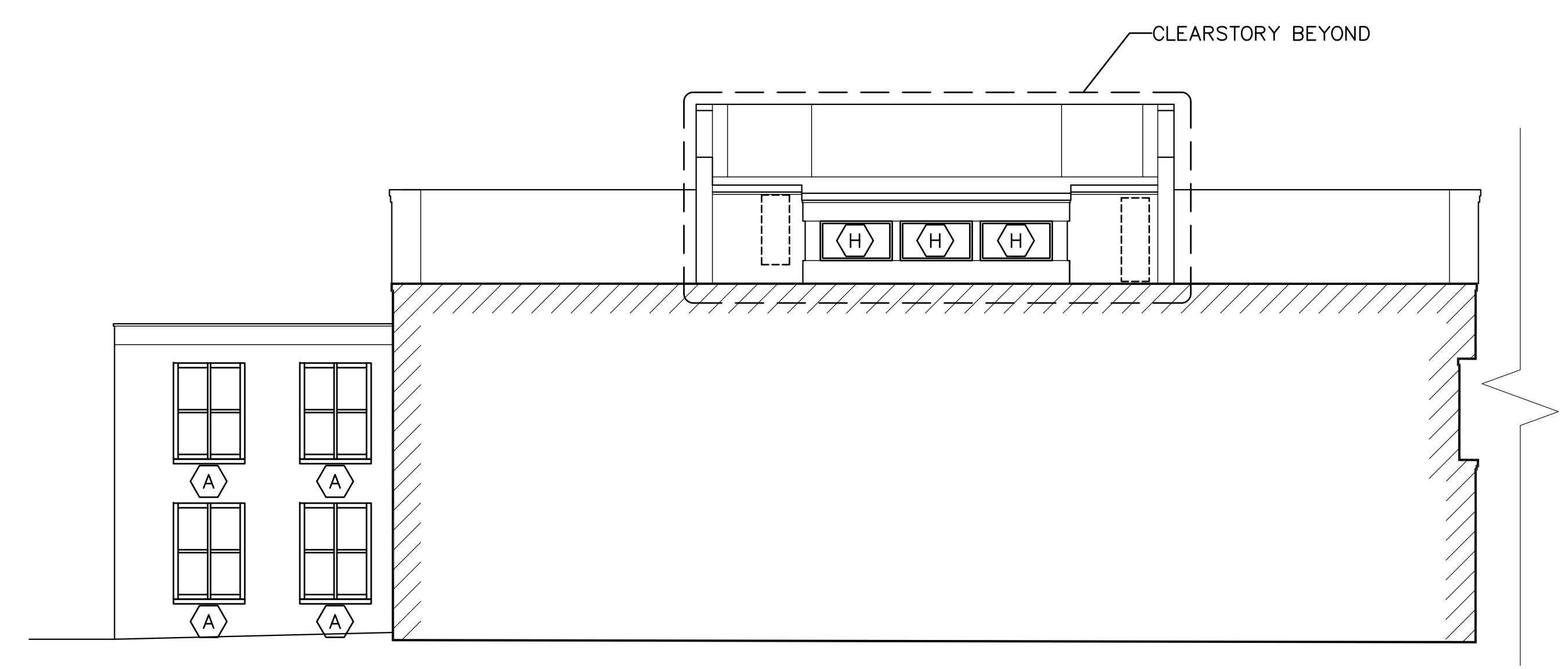
2 EAST ELEVATION
 AE201 SCALE: 1/8"=1'-0"



3 PART NORTH ELEVATION
 AE201 SCALE: 1/8"=1'-0"



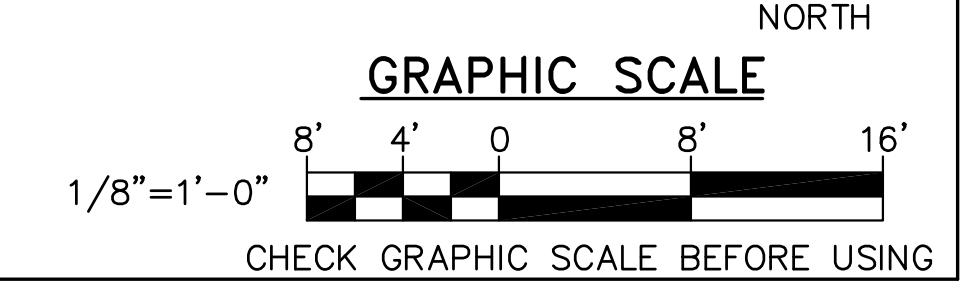
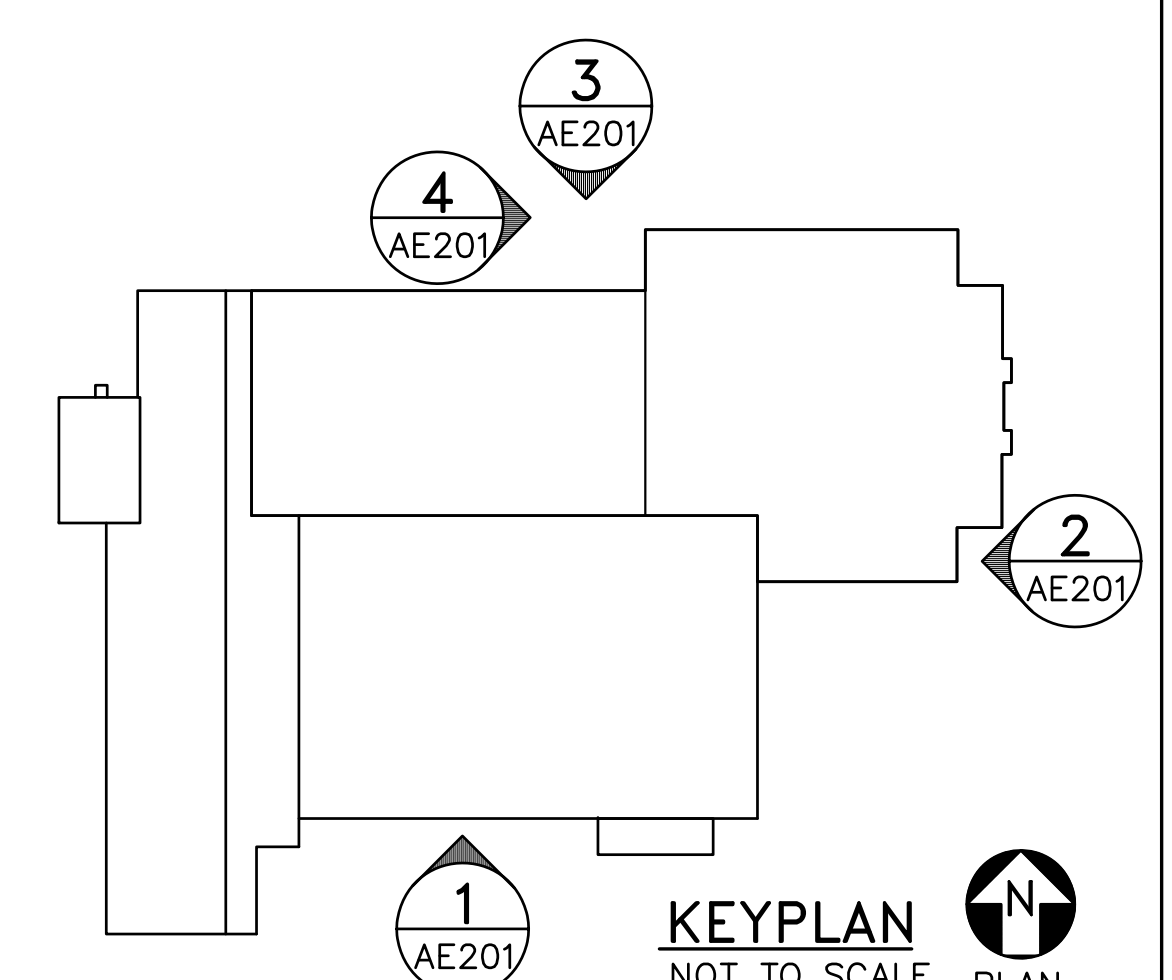
3 PART NORTH ELEVATION
 AE201 SCALE: 1/8"=1'-0"



4 PART WEST ELEVATION
 AE201 SCALE: 1/8"=1'-0"

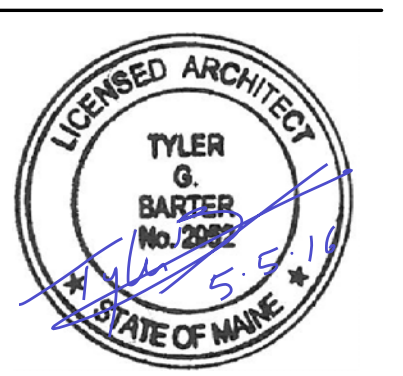
GENERAL NOTES:

1. REFER TO SHEET AE620 FOR WINDOW TYPES.
2. REFER TO SHEET AE210 FOR EXTERIOR MASONRY RESTORATION.



FOR PERMITTING PURPOSES ONLY
 NOT FOR CONSTRUCTION

OAK POINT ASSOCIATES
 ARCHITECTS
 231 Main Street, Biddeford, Maine 04005 (707) 283-0198 (P) 207 288-4283
 www.oakpoint.com



DESIGNED BY: TGB
 DRAWN BY: TGB
 CHECKED BY: TGB
 PROJECT: 21502.10

UNIVERSITY OF NEW ENGLAND
 PORTLAND CAMPUS
 STEVEN AVENUE ARMORY
 718 STEVENS AVE
 PORTLAND, MAINE 04103
 (207) 285-0171

RENOVATIONS TO THE
 STEVENS AVENUE ARMORY

EXTERIOR ELEVATIONS

SCALE: AS NOTED

DATE: 05-13-16

DWG. **AE201**

SHEET: OF .