

SCALE:	NTS	PO No.	TRD	IRW/D:
0	Original Issue	8/16	KMB	
	REV.	DATE	DRWN:	

LEGEND:

RISER DIAG SYM	CONTRACT DWG SYM	NFPA SYMBOL	DESCRIPTION	CATALOG #
FACP	FACP	FACP	Fire Alarm Control Panel	EST3
ANN	FAA	FAA	Fire Alarm Annunciator	ESTANN
BPS	NPE	FACU	Notification Power Extender (Fire Alarm Control Unit)	BPS10A
F	F	P	Manual Pull Station	SGA-278
?	?	?	Smoke Detector w/Base	SGA2-PS w/ SGA-SB
?	?	?	Heat Detector w/Base	SGA2-HPS w/ SGA-SB
?	?	?	Duct Smoke Detector w/ Remote Test Station and Sampling Tube	SGA-SD, SD-TRK, SD-xx
CO			Carbon Monoxide Detector w/ Duct Housing	CM-E1, DMK-1
MCC2A		COM	Addressable Class A Signal Module	SGA-MCC2A
CT1	CT2	AM	Addressable Input Module (x Denotes 1 or 2 Inputs; M Denotes Motherboard Required)	SGA-CT1, CT2 SGA-MCT2, UIO Board
CR	MCR	COM	Addressable Relay Module (M Denotes Motherboard Required)	SGA-CR SGA-MCR, UIO Board
CC1S		COM	Addressable Synchronization Module	SGA-CC1S
Beam			Beam Smoke Detector	EC-50R
FS	FS	WF	Waterflow Switch	FBO
TS	TS	VS	Tamper Switch (Valve Supervisory)	FBO
?	?	?	Strobe Unit (# Indicates Candela setting)	GIF-VM
?	?	?	Speaker Strobe Unit (# Indicates Candela setting)	G4HFWF-STVMC
?	?	?	Speaker/Strobe Unit - Ceiling Mount (# Indicates Candela setting)	G4HFWF-STVMC

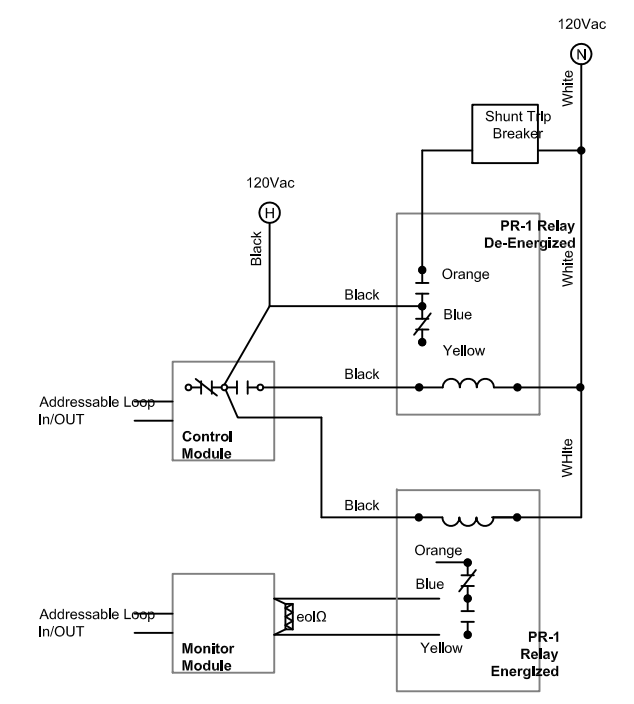
NFPA 770 (2009) Tables 6.5, 6.7.1, 6.7.2, & 6.7.3
 Not All Symbols May Be Used

GENERAL NOTES:

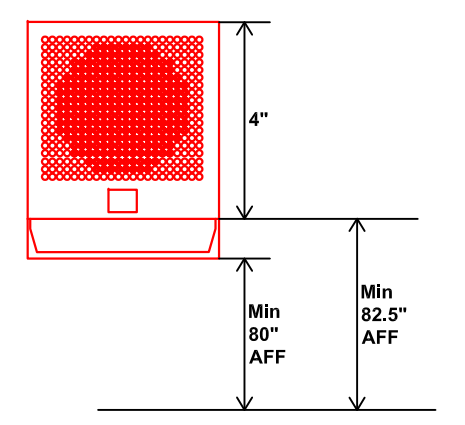
1. ALL WIRING IN ACCORDANCE WITH NATIONAL ELECTRICAL CODE, STATE OF MAINE BUILDING CODE (IBC), AUTHORITY HAVING JURISDICTION, CITY OF PORTLAND, AND MANUFACTURER'S REQUIREMENTS AND RECOMMENDATIONS.

WIRING NOTES:

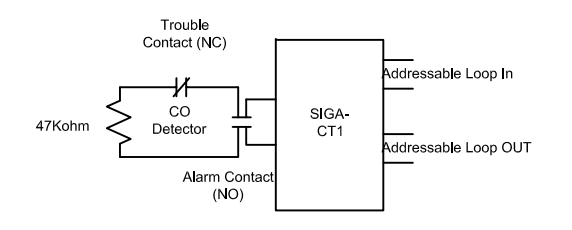
- ALL ADDRESSABLE DEVICES MUST BE INSTALLED IN A HEATED LOCATION.
- ADDRESSABLE CONTROL RELAYS (CR or MCR) SHALL SWITCH ONLY 12/24V (AC/DC) @ 2.0 Amps OR LESS. SWITCHED CIRCUITS REQUIRING HIGHER VOLTAGE SHALL USE AN INTERMEDIATE LISTED FOR THE PURPOSE.
- Addressable loop consists of (1) 2c #16 Twisted Non-shielded from FACP/FATC at 1st device; (1) 2c #16 Twisted Non-shielded through remaining devices on circuit and return to FACP/FATC. Maintain proper separation between feeds and returns.
- Strobe circuits and Booster trip circuits consist of 2c #14 from FACP/BPS to 1st device; 2c #14 through remaining devices on circuit and end at end of line resistor. Maintain proper separation between feeds and returns.
- Network annunciator wiring consists of (1) 2c #16 Twisted Non-shielded and (1) 2c #14 from FACP to annunciator; (1) 2c #16 Twisted Non-shielded from annunciator to FACP. Maintain proper separation between feeds and returns.
- Speaker circuit wiring consists of (1) 2c #14 Twisted Non-shielded from FACP/FATC to 1st device; (1) 2c #14 Twisted Non-shielded through remaining devices on circuit and return to FACP. Maintain proper separation between feeds and returns.



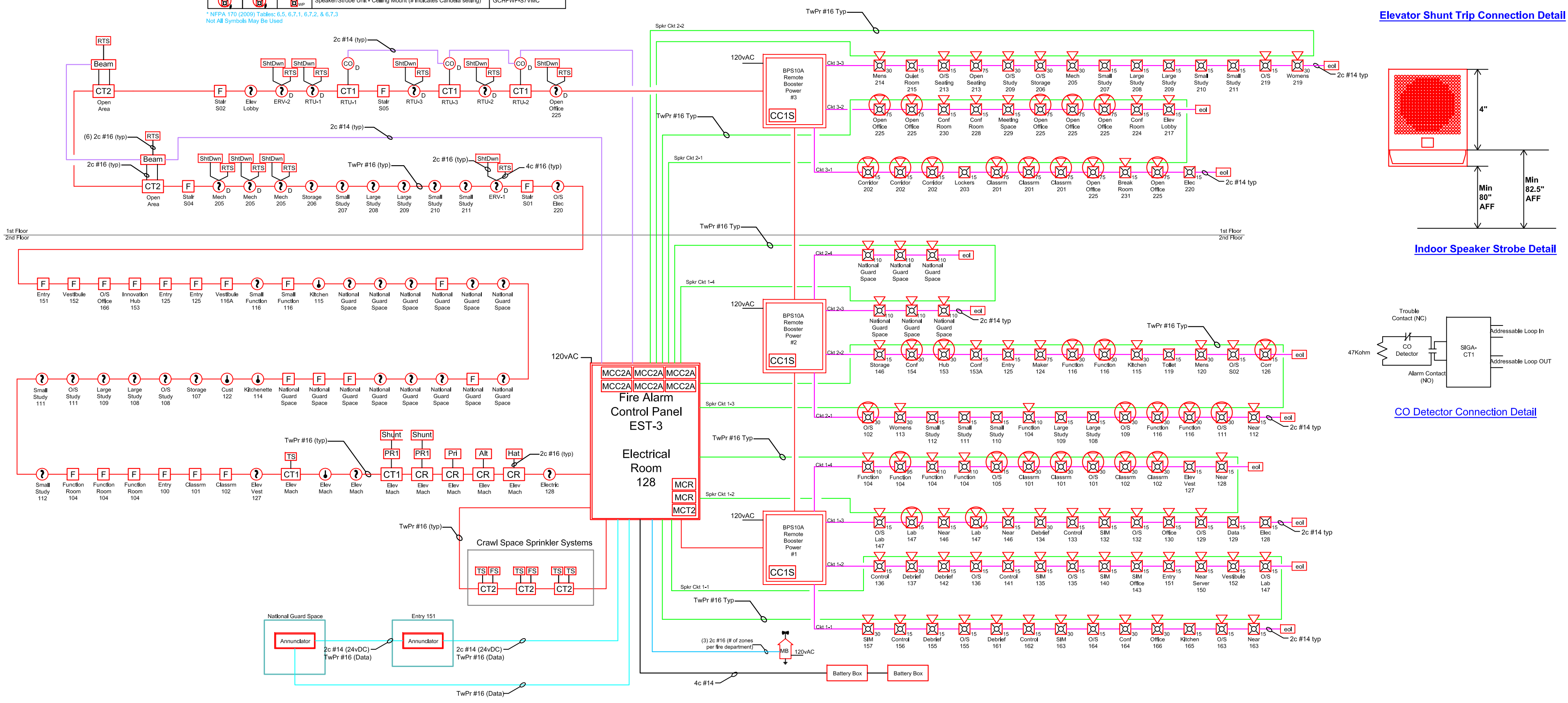
Elevator Shunt Trip Connection Detail



Indoor Speaker Strobe Detail



CO Detector Connection Detail



1st Floor
 2nd Floor