

DESIGNED BY: RMC
 DRAWN BY: KLG
 CHECKED BY: MSA
 PROJECT: 21502.10

UNIVERSITY OF NEW ENGLAND
 PORTLAND CAMPUS
 STEVEN AVENUE ARMORY
 716 STEVEN AVENUE
 PORTLAND, MAINE 04103
 T (207)283-0171

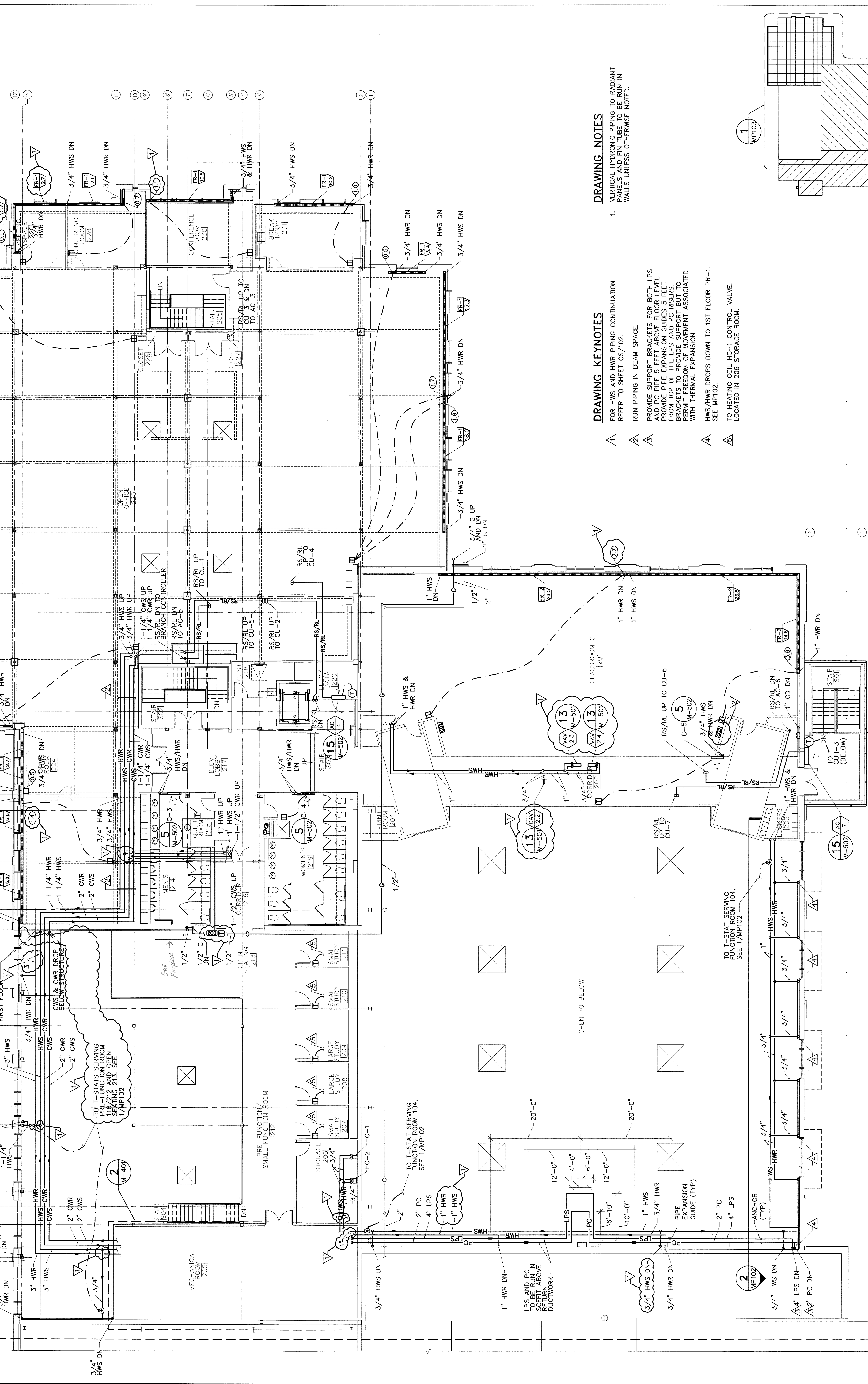
RENOVATIONS TO THE
 STEVEN AVENUE ARMORY

SECOND FLOOR
 MECHANICAL
 PIPING
 PART PLAN

SCALE: AS NOTED
 DATE: 05-24-16

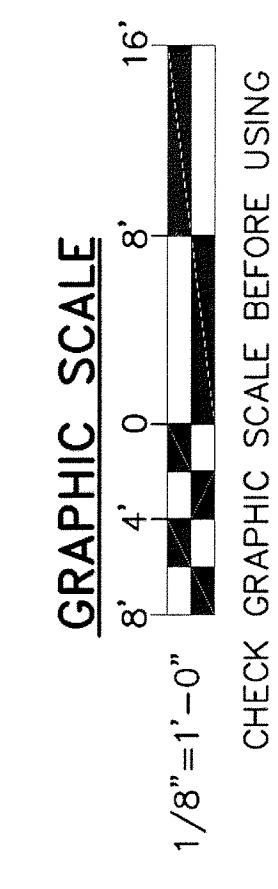
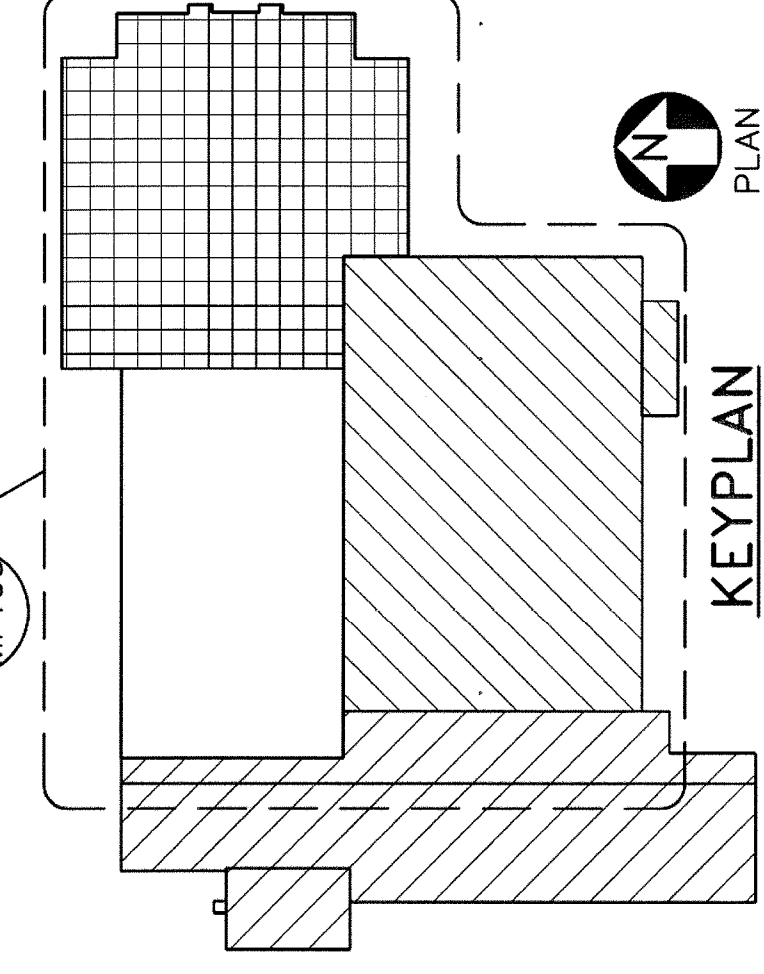
DWG. **MP103**
 SHEET: 132 OF 169

NO.	DATE	DESCRIPTION	BY
2	6/23/18	ADDENDUM NO. 4	RNC
1	6/20/18	ADDENDUM NO. 3	RNC



DRAWING NOTES
 1. VERTICAL HYDRONIC PIPING TO RADIANT PANELS AND FIN TUBE TO BE RUN IN WALLS UNLESS OTHERWISE NOTED.

DRAWING KEYNOTES
 FOR HWS AND HWR PIPING CONTINUATION REFER TO SHEET CS/102.
 RUN PIPING IN BEAM SPACE.
 PROVIDE SUPPORT BRACKETS FOR BOTH LPS AND PC PIPE 5 FEET ABOVE FLOOR LEVEL. PROVIDE PIPE EXPANSION GUIDES 5 FEET ABOVE FLOOR LEVEL. PROVIDE SUPPORT BRACKETS TO PROVIDE SUPPORT FOR LPS AND PC PIPE TO PERMIT FREEDOM OF MOVEMENT ASSOCIATED WITH THERMAL EXPANSION.
 HWS/HWR DROPS DOWN TO 1ST FLOOR PR-1. SEE MP102.
 TO HEATING COIL HC-1 CONTROL VALVE. LOCATED IN 206 STORAGE ROOM.



1 SECOND FLOOR MECHANICAL PIPING PART PLAN
 MP103 SCALE: 1/8"=1'-0"
 MP102