

DESIGNED BY: RNC
 DRAWN BY: KLG
 CHECKED BY: MSA
 PROJECT: 21502.10

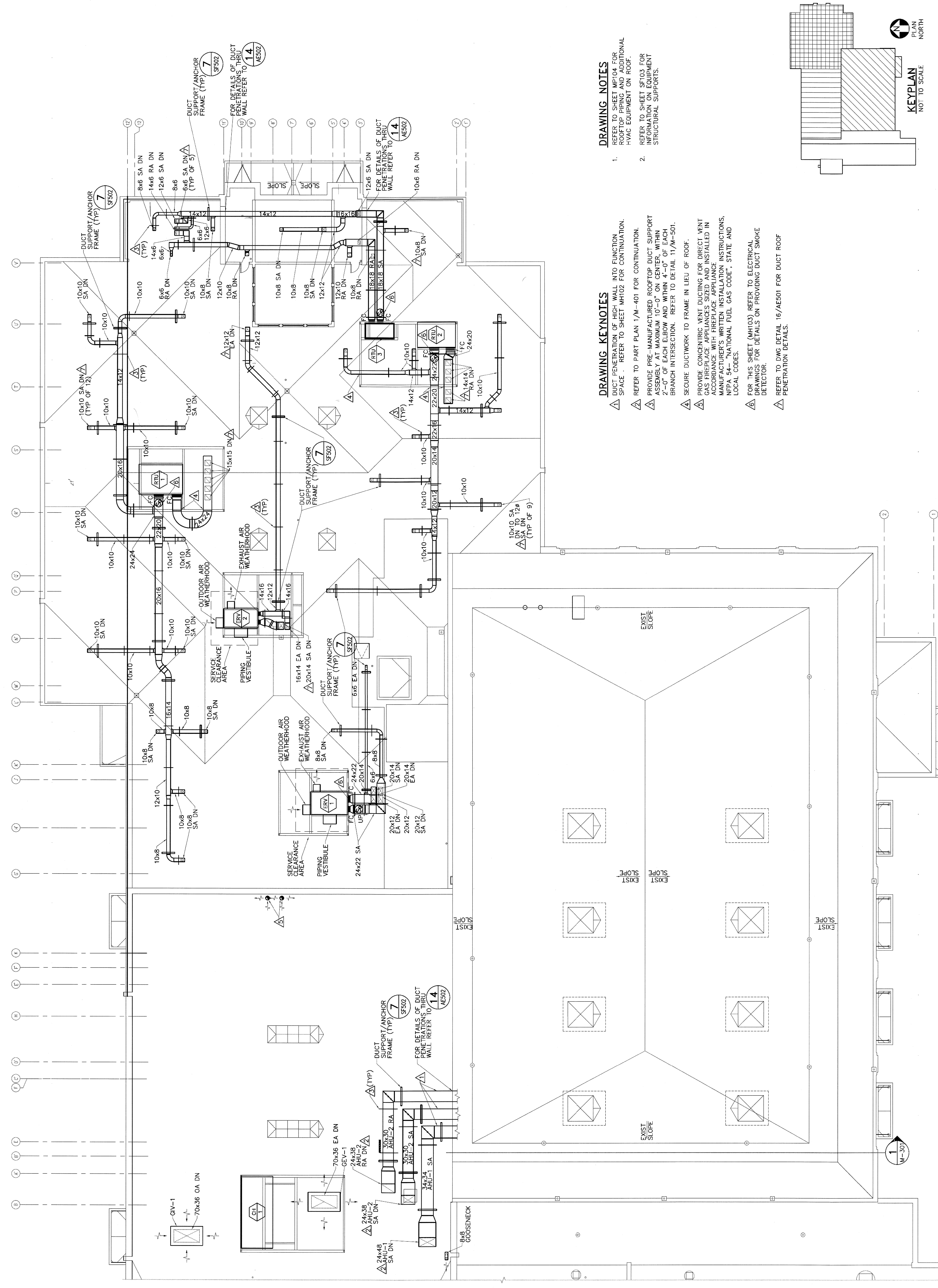
UNIVERSITY OF NEW ENGLAND
 PORTLAND CAMPS
 STEVEN AVENUE ARMORY
 716 STEVEN AVE
 PORTLAND, MAINE 04103
 T (207)283-0171

RENOVATIONS TO THE
 STEVENS AVENUE ARMORY

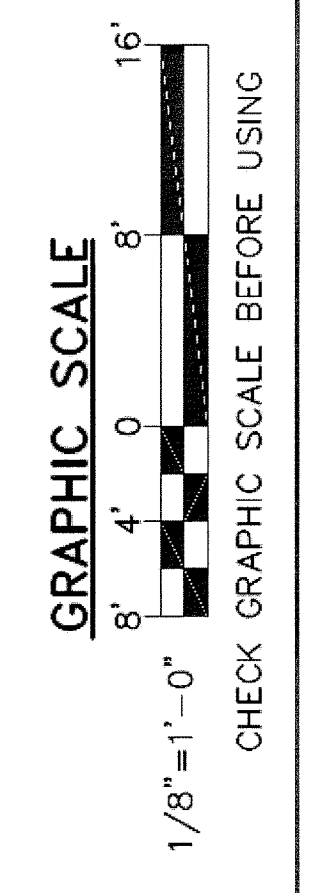
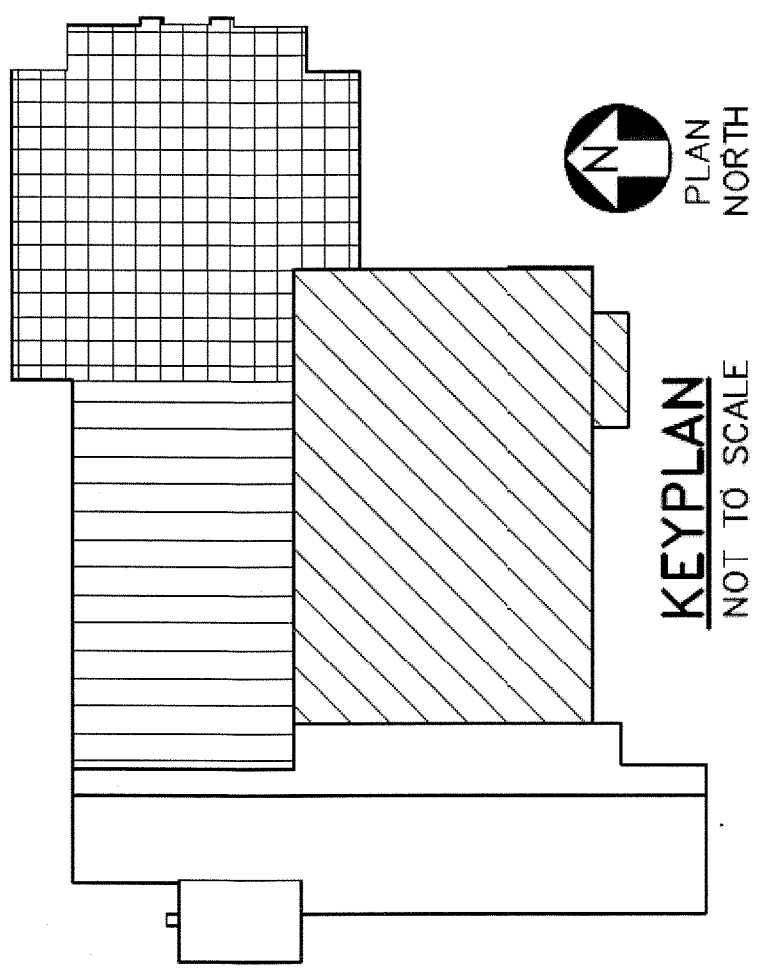
ROOF
 MECHANICAL
 PART PLAN

SCALE: AS NOTED
 DATE: 05-24-16

DWG. **MH103**
 SHEET: 129 OF 169



- DRAWING KEYNOTES**
- ▲ DUCT PENETRATION OF HIGH-WALL INTO FUNCTION SPACE - REFER TO SHEET MH102 FOR CONTINUATION.
 - ▲ PROVIDE PRE-MANUFACTURED ROOFTOP DUCT SUPPORT ASSEMBLY WITH AN ANCHOR FRAME AND WITH A 2" GAP AT EACH ELBOW AND WITH A 1/2" GAP AT BRANCH INTERSECTION. REFER TO DETAIL 11/M-501.
 - ▲ SECURE DUCTWORK TO FRAME IN LIEU OF ROOF.
 - ▲ PROVIDE CONCENTRIC VENT DUCTING FOR DIRECT VENT GAS FIREPLACE APPLIANCES SIZED AND INSTALLED IN ACCORDANCE WITH FIREPLACE APPLIANCE MANUFACTURER'S WRITTEN INSTALLATION INSTRUCTIONS, NFPA 54 - "NATIONAL FUEL GAS CODE", STATE AND LOCAL CODES.
 - ▲ FOR THIS SHEET (MH103) REFER TO ELECTRICAL DRAWINGS FOR DETAILS ON PROVIDING DUCT SMOKE DETECTOR.
 - ▲ REFER TO DWG. DETAIL 16/AE501 FOR DUCT ROOF PENETRATION DETAILS.
- DRAWING NOTES**
- 1. REFER TO SHEET MH104 FOR RATED PENETRATIONS FOR ADDITIONAL HVAC EQUIPMENT ON ROOF.
 - 2. REFER TO SHEET SF103 FOR STRUCTURAL SUPPORTS.



1 ROOF MECHANICAL PART PLAN
 PLAN NORTH
 MH103 SCALE: 1/8"=1'-0"