

DESIGNED BY: JEG  
 DRAWN BY: MJC  
 CHECKED BY: DNM  
 PROJECT: 21502.10

UNIVERSITY OF NEW ENGLAND  
 PORTLAND CAMPUS  
 STEVEN AVENUE ARMORY  
 716 STEVEN AVENUE  
 PORTLAND, MAINE 04103  
 (707) 283-0171

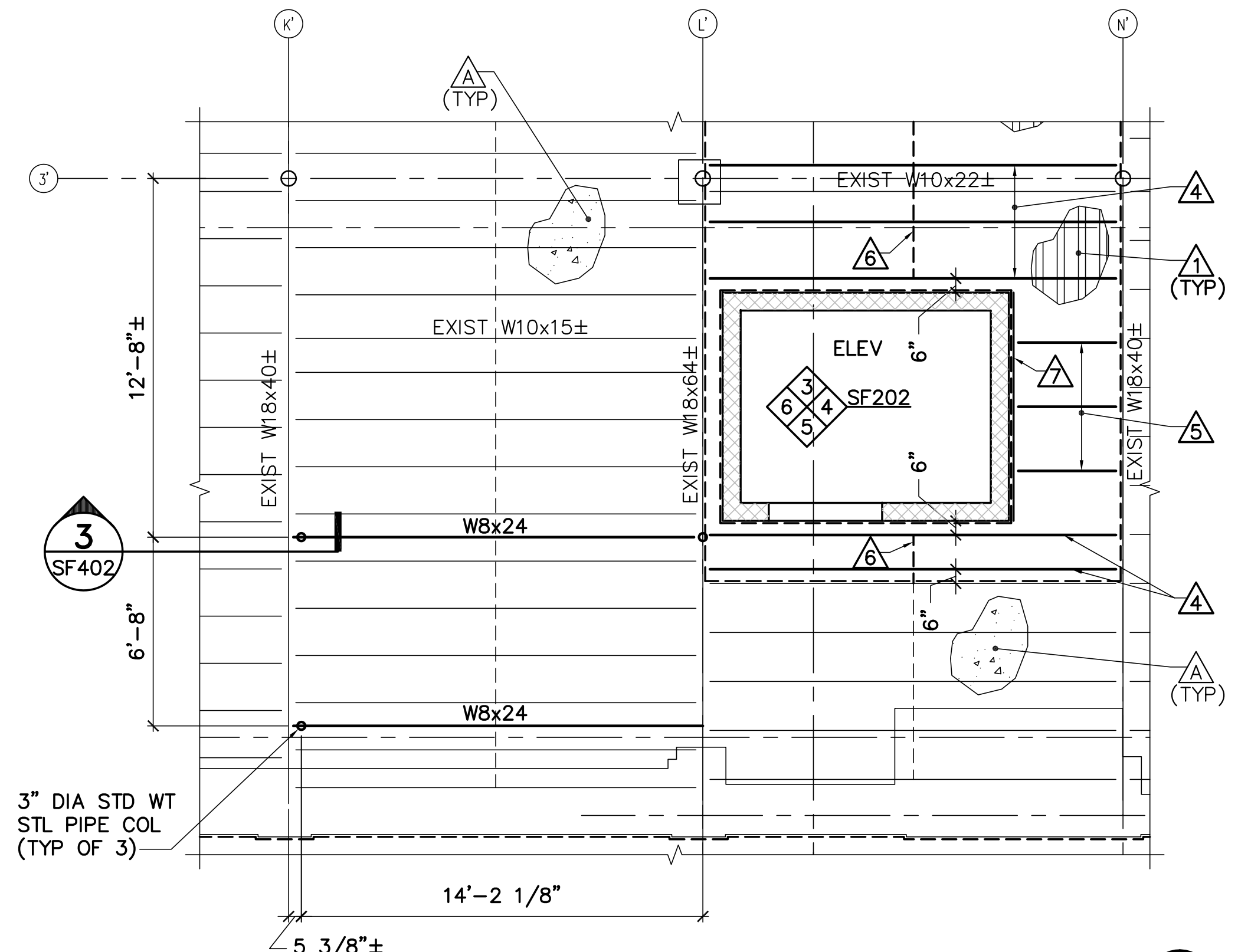
RENOVATIONS TO THE  
 STEVEN AVENUE ARMORY

ENLARGED SECOND FLOOR PARTIAL PLANS AND DETAILS

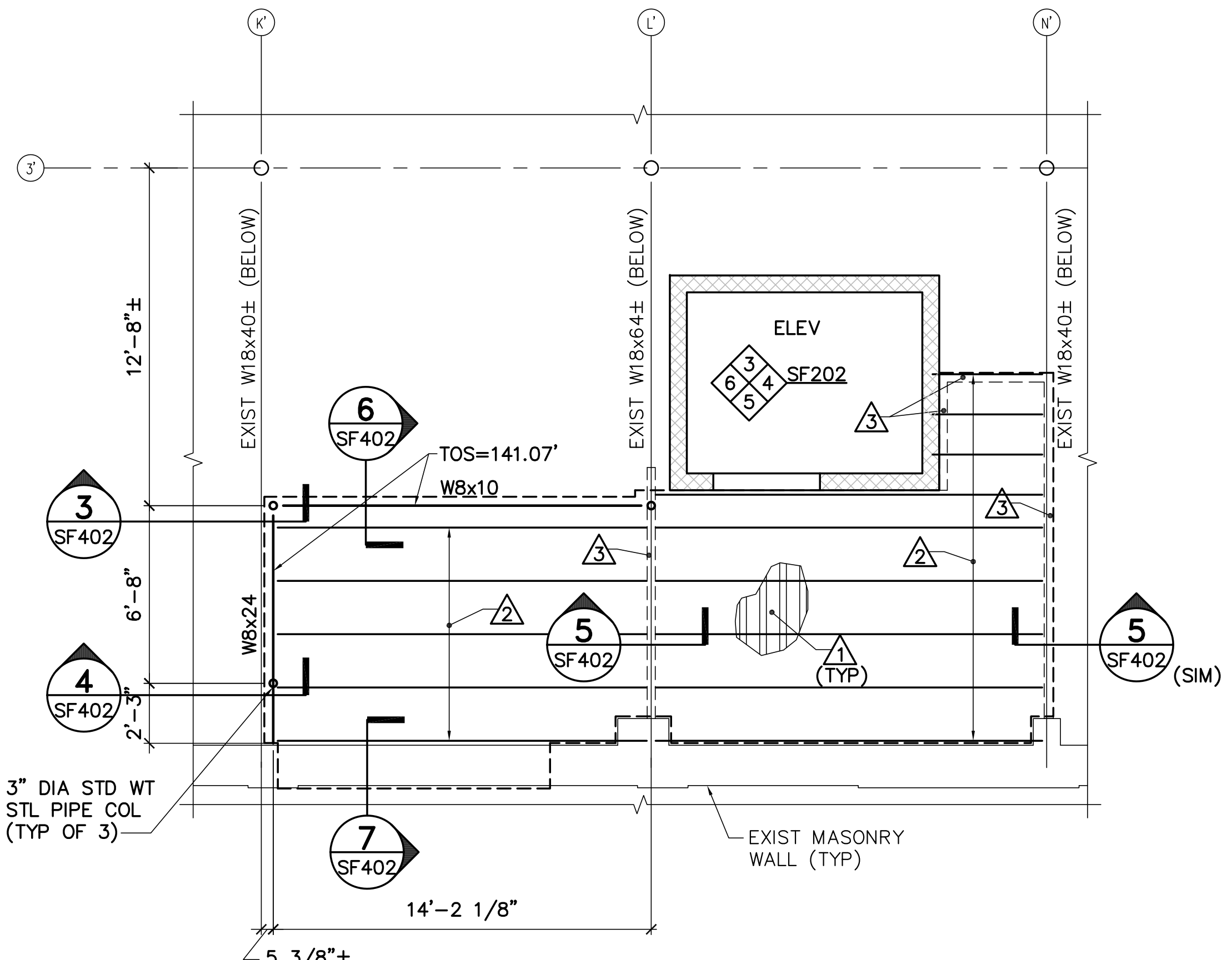
SCALE: AS NOTED  
 DATE: 05-24-16  
 DWG. SF402  
 SHEET: 36 OF 169

- EXISTING KEYNOTES: (THIS SHEET ONLY)**
- △ EXISTING 2-1/2"± DRAPED STEEL MESH/CONCRETE FLOOR SLAB.
  - △ EXISTING 10"± STEEL JOISTS AT 20"± ON-CENTER.
  - △ EXISTING STEEL X-BRIDGING.
  - △ EXISTING STEEL PIPE COLUMN.

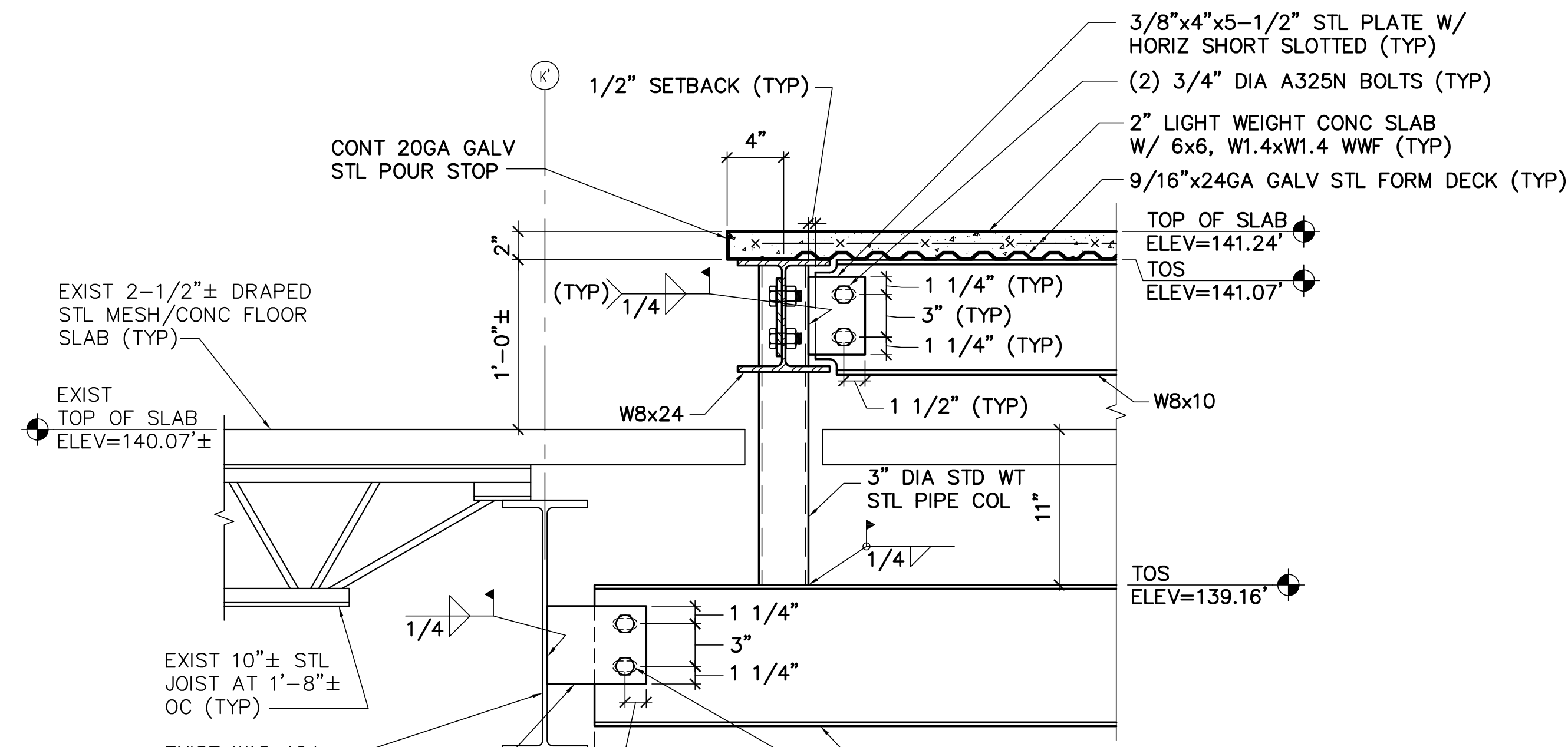
- KEYNOTES: (THIS SHEET ONLY)**
- △ 2" LIGHT WEIGHT CONCRETE SLAB WITH 9/16"x24GA STEEL FORM DECK AND 6x6, W1.4xW1.4 WELDED WIRE FABRIC.
  - △ 800 S 200-97 COLD-FORMED STEEL JOISTS AT 2'-0" ON-CENTER.
  - △ 600 S 162-68 COLD-FORMED STEEL STUDS AT 2'-0" ON-CENTER.
  - △ 10K1 STEEL JOISTS AT 2'-0" ON-CENTER, UNLESS NOTED OTHERWISE.
  - △ 2.5 K1 STEEL JOIST SUBSTITUTE.
  - △ BRIDGING INSTALLED PER THE MANUFACTURER'S PRINTED INSTRUCTIONS.
  - △ 4x4x5/16 (LLV). SEE DETAIL 13/SF502.



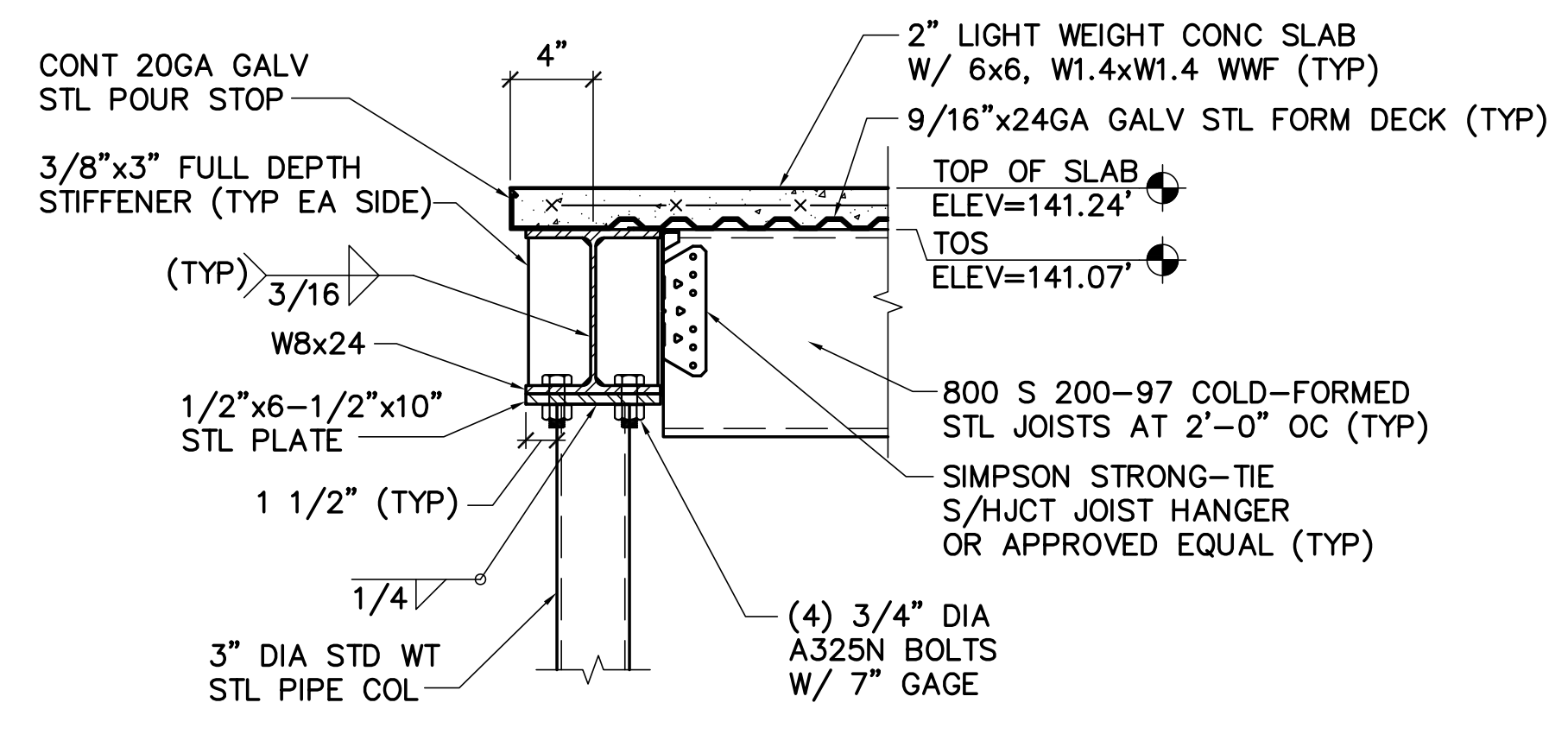
**1 ENLARGED PARTIAL SECOND FLOOR FRAMING PLAN**  
 SF402 SCALE: 1/4"=1'-0" PLAN NORTH



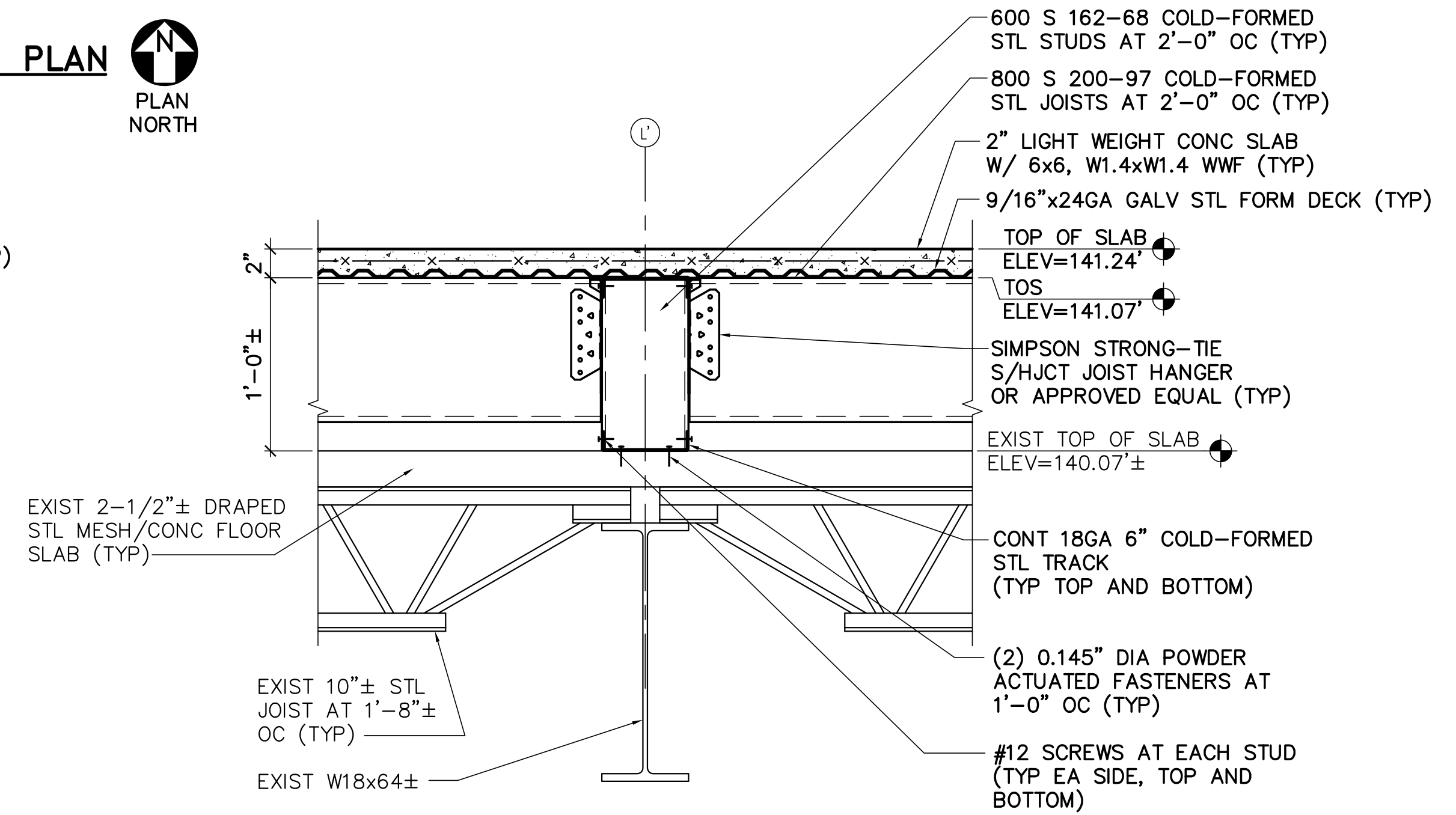
**2 ENLARGED PARTIAL SECOND FLOOR INFILL PLAN**  
 SF402 SCALE: 1/4"=1'-0" PLAN NORTH



**3 W8x10/W8x24 CONN DETAIL**  
 SF101, SF102, SF103, SF402 SCALE: 1-1/2"=1'-0" SF402, SF501

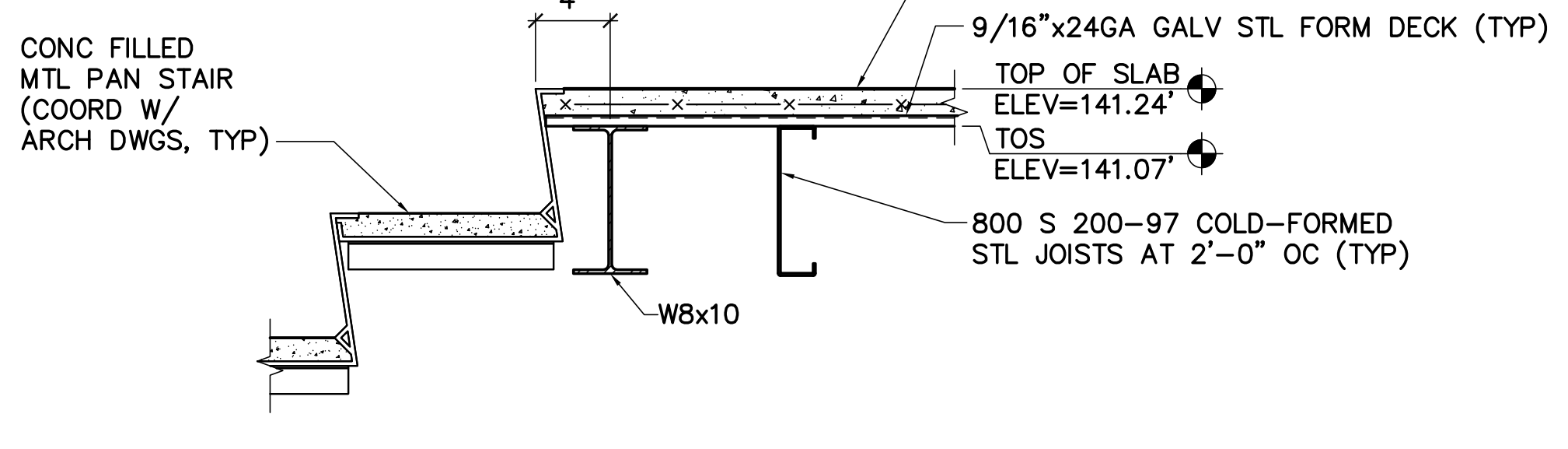


**4 W8x24 CONN DETAIL**  
 SF402 SCALE: 1-1/2"=1'-0"

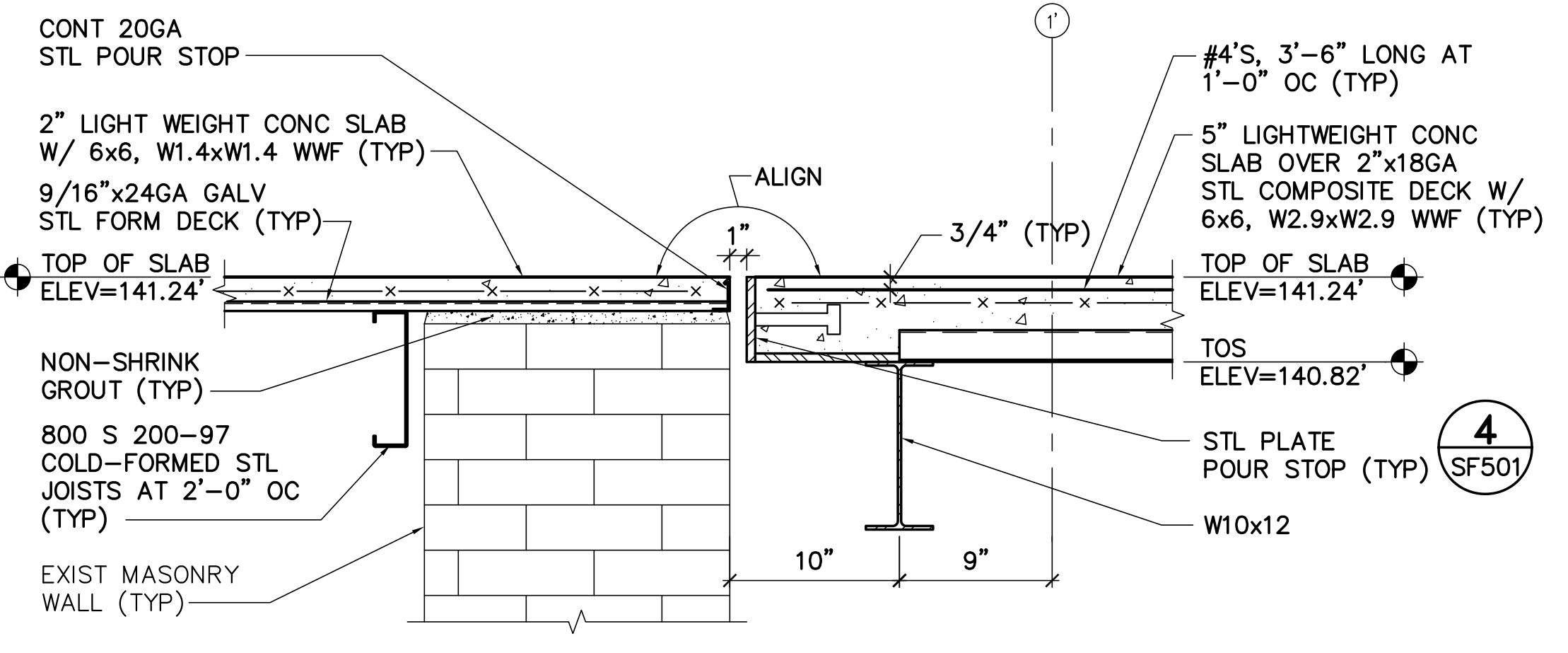


**5 TYP 800 S 200-97 COLD-FORMED STL JOIST SUPPORT DETAIL**  
 SF402 SCALE: 1-1/2"=1'-0"

- NOTES:**
1. COPE W8x10 AS REQUIRED.
  2. REMOVE EXISTING PAINT/PRIMER FROM EXISTING STEEL PRIOR TO WELDING.



**6 DECK EDGE DETAIL AT STAIR S03**  
 SF402 SCALE: 1-1/2"=1'-0"



**7 TYP ELEVATED SLAB TRANSITION DETAIL**  
 SF102, SF402 SCALE: 1-1/2"=1'-0"

