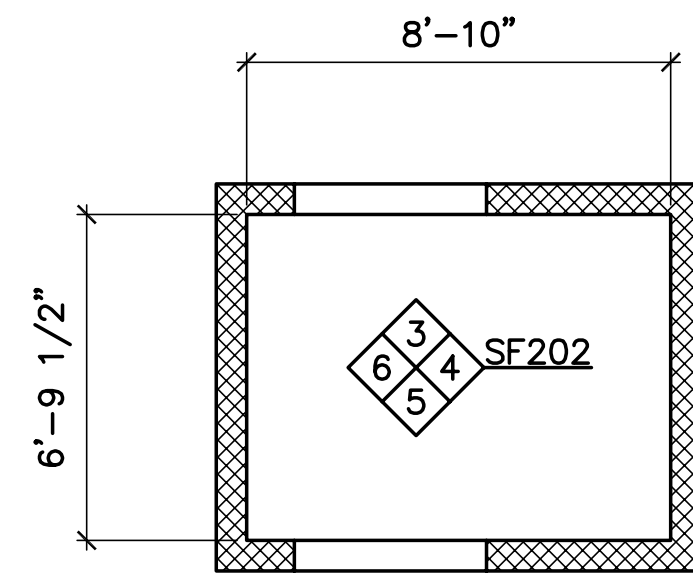
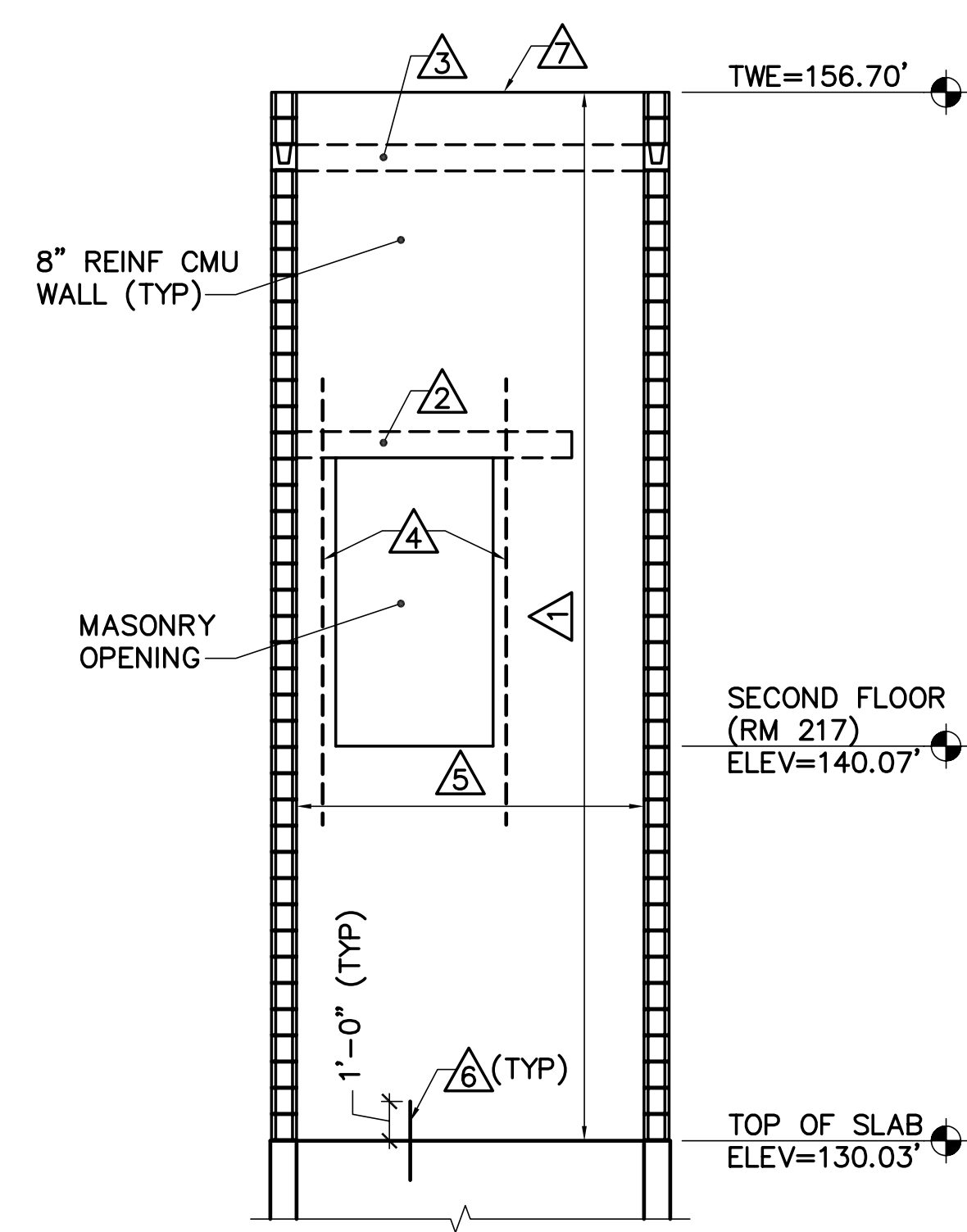


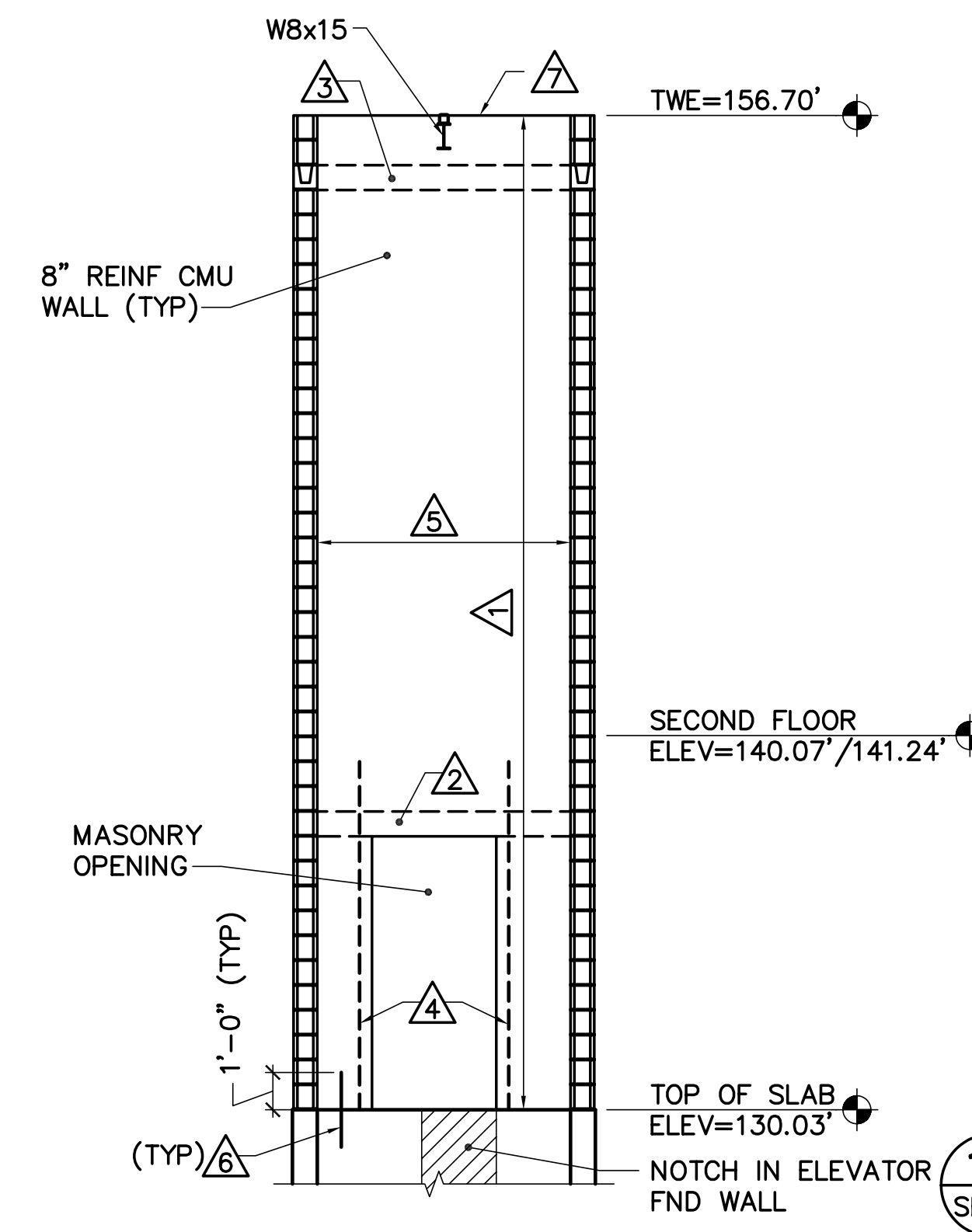
**1 ELEVATOR FIRST FLOOR PLAN**  
SF401, SF202 SCALE: 1/4"=1'-0" PLAN NORTH



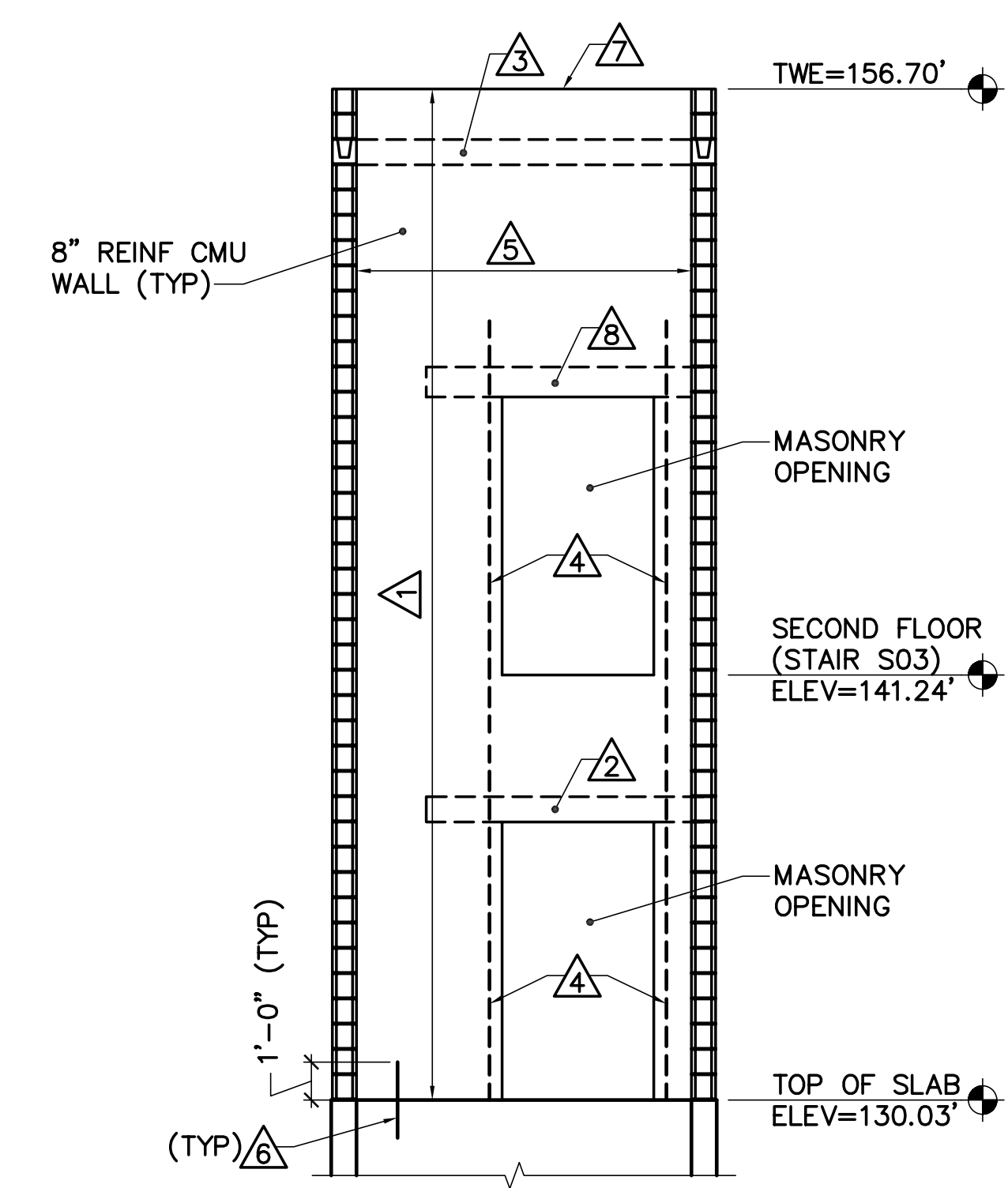
**2 ELEVATOR SECOND FLOOR PLAN**  
SF401, SF202 SCALE: 1/4"=1'-0" PLAN NORTH



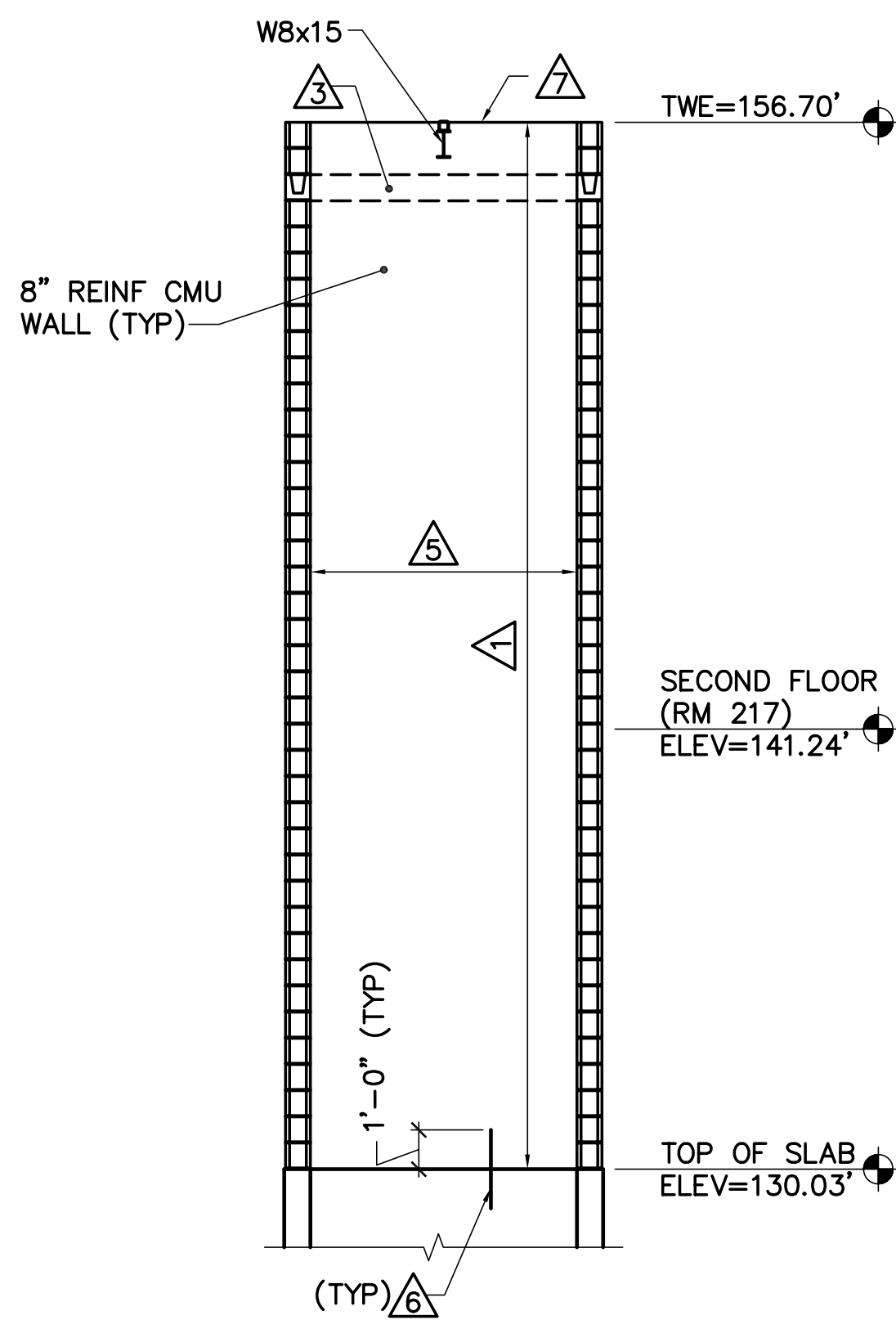
**3 ELEVATOR MASONRY SHEAR WALL ELEVATION**  
SF401, SF402, SF202 SCALE: 1/4"=1'-0"



**4 ELEVATOR MASONRY SHEAR WALL ELEVATION**  
SF401, SF402, SF202 SCALE: 1/4"=1'-0"



**5 ELEVATOR MASONRY SHEAR WALL ELEVATION**  
SF401, SF402, SF202 SCALE: 1/4"=1'-0"



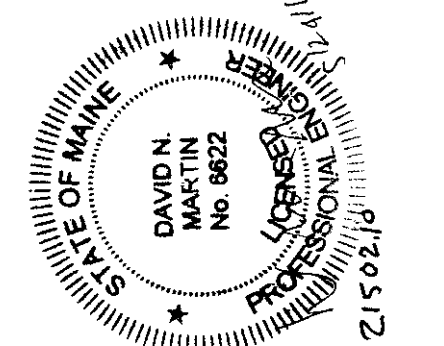
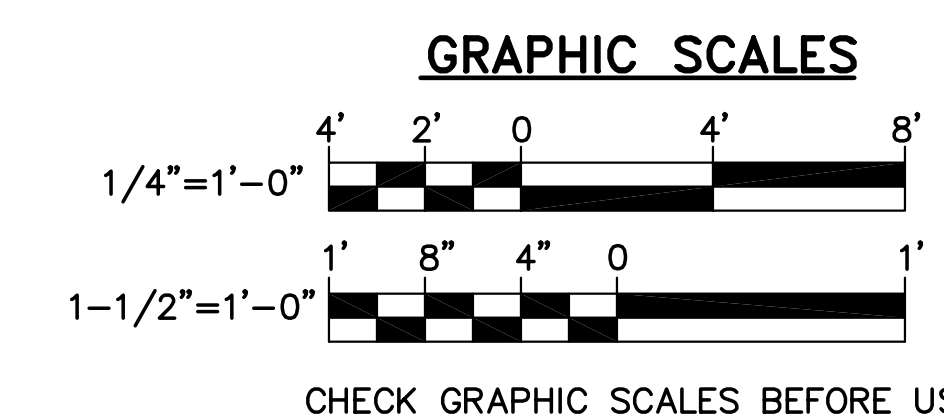
**6 ELEVATOR MASONRY SHEAR WALL ELEVATION**  
SF401, SF402, SF202 SCALE: 1/4"=1'-0"

**DRAWING NOTES:**

- COORDINATE EXACT SIZE AND LOCATION OF MASONRY OPENINGS WITH ARCHITECTURAL PLANS.
- LAP SPLICE #5'S = 1'-8".

**KEYNOTES:** (THIS SHEET ONLY)

- △ CONTINUOUS HORIZONTAL JOINT REINFORCEMENT AT 1'-4" ON-CENTER.
- △ 8" REINFORCED CMU LINTEL WITH (1) #5. EXTEND REINFORCING 2'-0" PAST OPENING, UNLESS NOTED OTHERWISE.
- △ CONTINUOUS 8" CMU BOND BEAM WITH (1) #5.
- △ (1) #5 VERTICAL IN JAMBS. EXTEND REINFORCING 2'-0" PAST OPENING IN EACH DIRECTION.
- △ #5'S VERTICAL AT 2'-8" ON-CENTER. GROUT ALL CELLS SOLID.
- △ #5 DOWELS, 3'-0" LONG, SPACING TO MATCH VERTICAL REINFORCING.
- △ TOP OF CMU WITH CONTINUOUS 3/8"x6" STEEL PLATE. SEE DETAIL 5/SF502.
- △ 9-1/2" DEEP REINFORCED CMU LINTEL WITH (1) #5. EXTEND REINFORCING 2'-0" PAST OPENING, UNLESS NOTED OTHERWISE.



JEG  
MJC  
DNM  
21502.10  
DESIGNED BY:  
DRAWN BY:  
CHECKED BY:  
PROJECT:

UNIVERSITY OF NEW ENGLAND  
PORTLAND CAMPUS  
STEVEN AVENUE ARMORY  
716 STEVENS AVE  
PORTLAND, MAINE 04103  
1 (207) 283-0171

RENOVATIONS TO THE  
STEVEN AVENUE ARMORY

ELEVATOR  
MASONRY  
SHEAR WALL  
ELEVATIONS