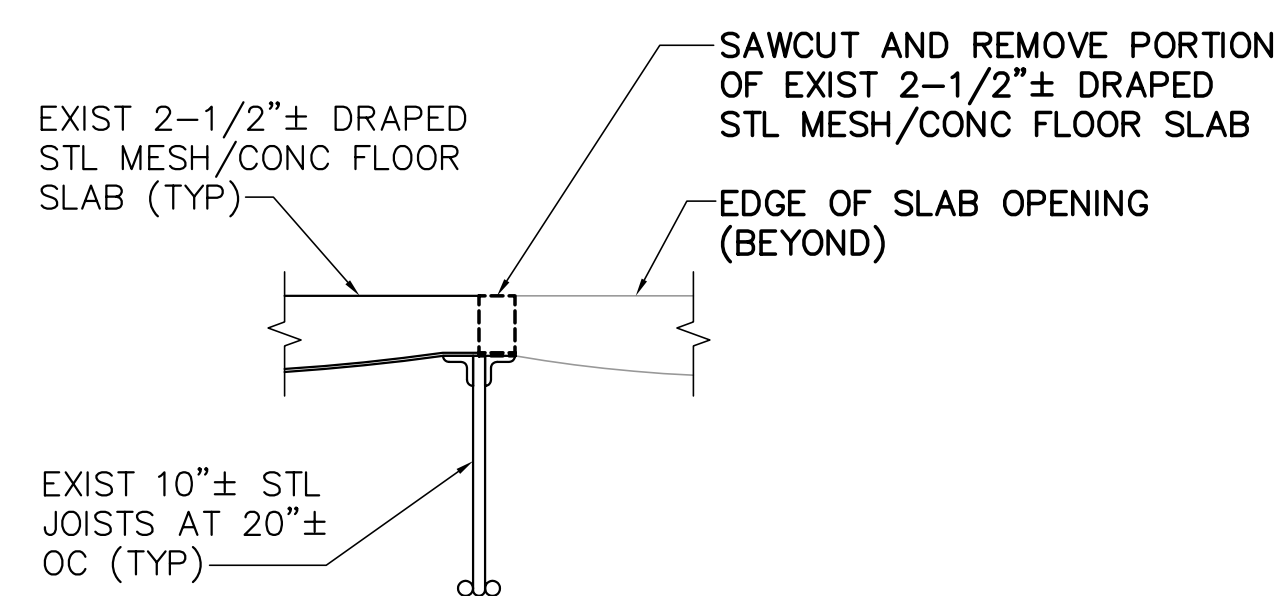


**1 EXIST VAULT REMOVALS DETAIL**

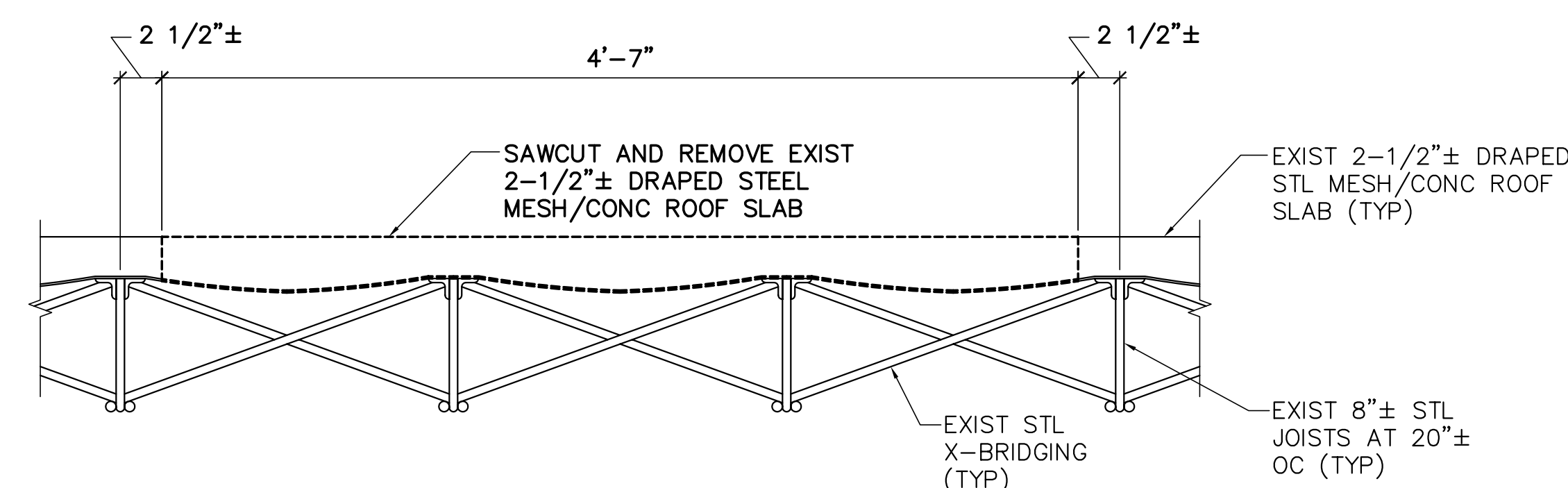
SD103 SD501 SCALE: 1-1/2"=1'-0"



- NOTES:**
1. REMOVAL SHALL BE THE LENGTH OF THE OPENING.
  2. DO NOT DAMAGE THE EXISTING STEEL JOISTS DURING THE REMOVAL OF THE DRAPED STEEL MESH AND CONCRETE FLOOR SLAB.

**2 TYP EXIST SLAB OPENING REMOVALS DETAIL**

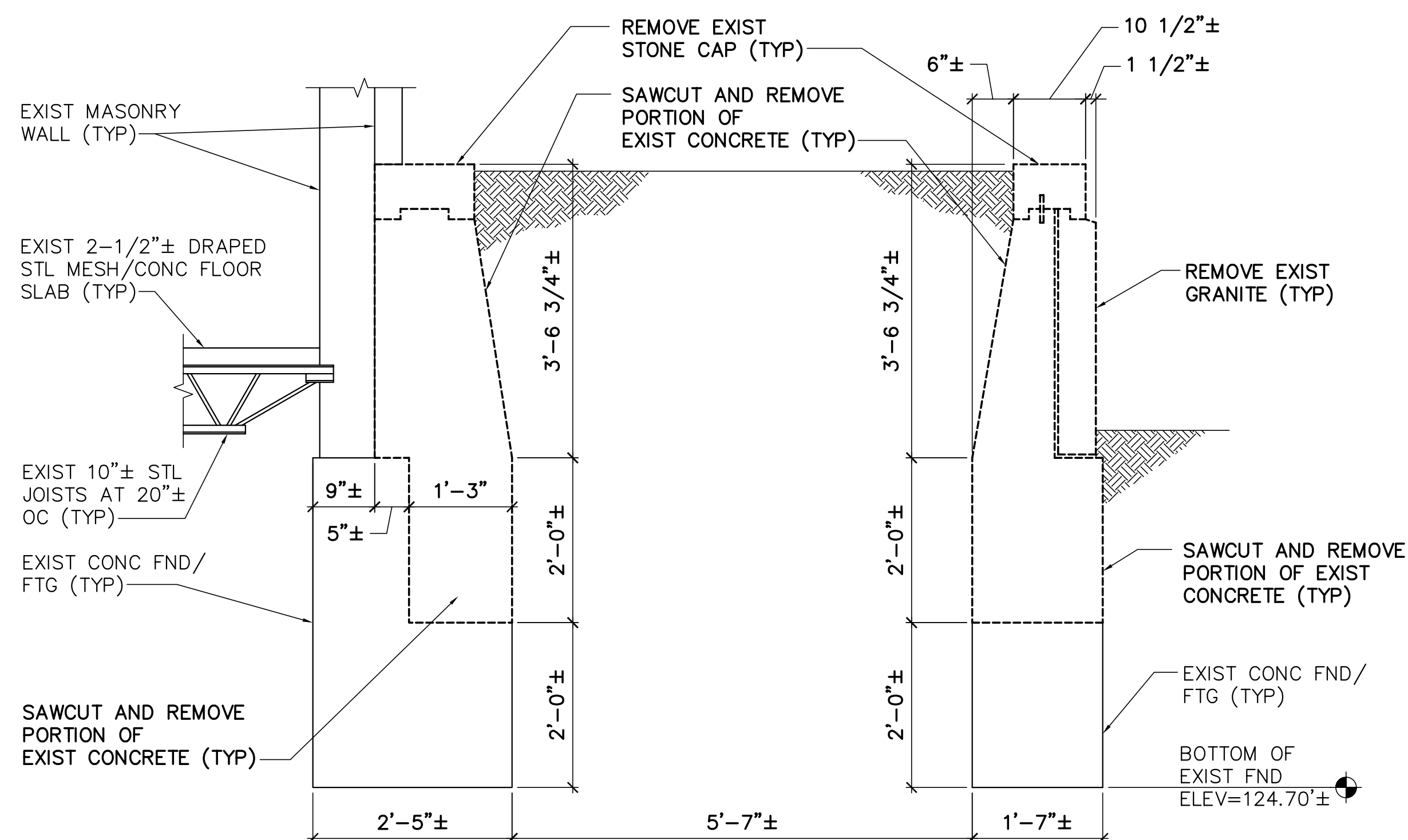
SD103, MD103 SD501 SCALE: 1-1/2"=1'-0"



- NOTES:**
1. DO NOT DAMAGE EXISTING STEEL JOISTS AND BRIDGING DURING REMOVAL OF DRAPED STEEL MESH/CONCRETE ROOF SLAB.
  2. COORDINATE SKYLIGHT OPENING WITH ARCHITECTURAL DRAWINGS AND SKYLIGHT MANUFACTURER.

**3 ROOF SLAB REMOVALS DETAIL AT SKYLIGHT**

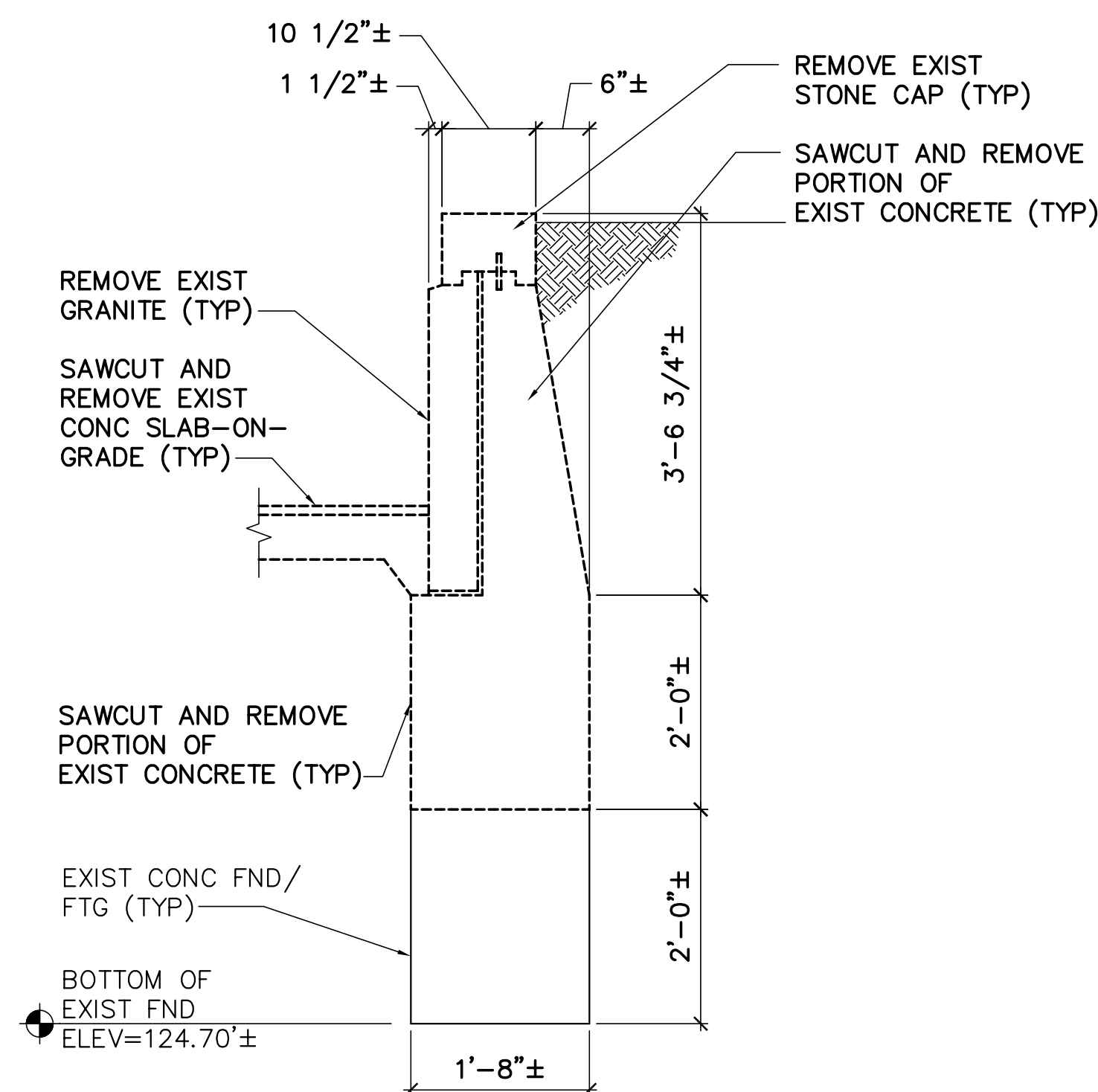
SD105 SD501 SCALE: 1-1/2"=1'-0"



**NOTE:**  
PROVIDE TEMPORARY SHORING OF EXISTING MASONRY WALL PRIOR TO REMOVAL OF EXISTING STONE CAP AND CONCRETE.

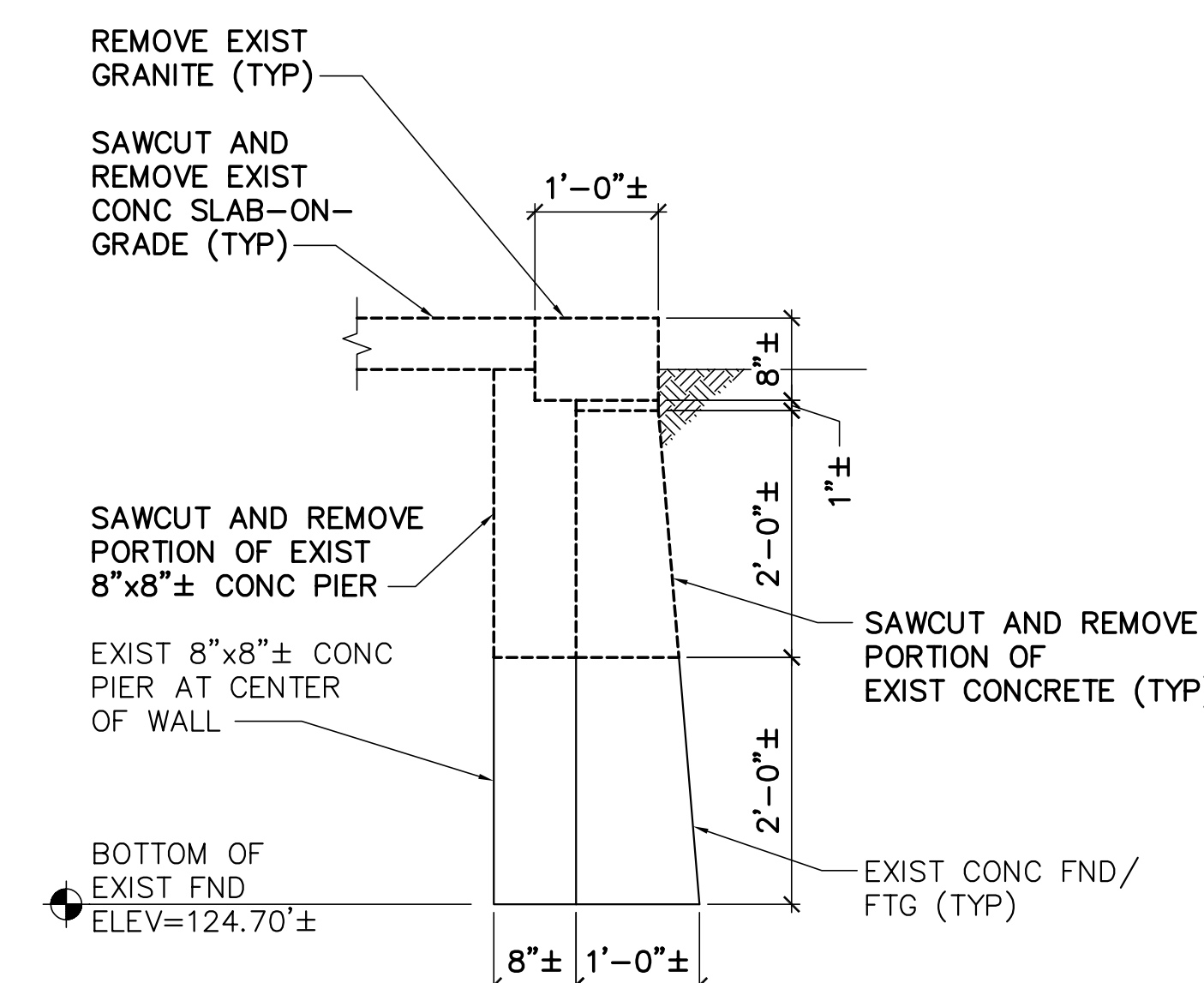
**4 RAISED CONCRETE PLANTING BED REMOVALS DETAIL**

SD101 SD501 SCALE: 3/4"=1'-0"



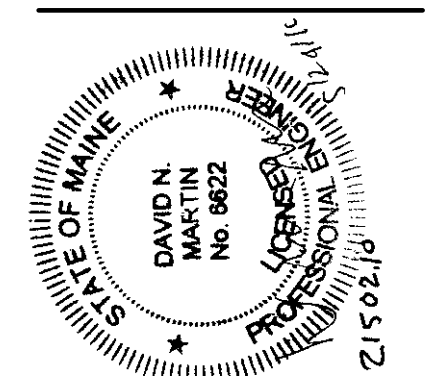
**5 RAISED CONCRETE PLANTING BED REMOVALS DETAIL**

SD101 SD501 SCALE: 3/4"=1'-0"



**6 EXIST 8"± CONC FND WALL REMOVALS DETAIL AT EAST ENTRANCE**

SD101 SD501 SCALE: 3/4"=1'-0"



DESIGNED BY: JEG  
DRAWN BY: MJC  
CHECKED BY: DNM  
PROJECT: 21502.10

UNIVERSITY OF NEW ENGLAND  
PORTLAND CAMPUS  
STEVEN AVENUE ARMORY  
716 STEVEN AVENUE  
PORTLAND, MAINE 04103  
1 (207) 285-0171

RENOVATIONS TO THE  
STEVEN AVENUE ARMORY

STRUCTURAL  
REMOVALS  
DETAILS

SCALE: AS NOTED

DATE: 05-24-16

DWG. **SD501**

SHEET: 21 OF 169

