

1 ROOF FRAMING REMOVALS PART PLAN
SD106 SCALE: 1/8"=1'-0" PLAN NORTH

GENERAL SHEET NOTE:

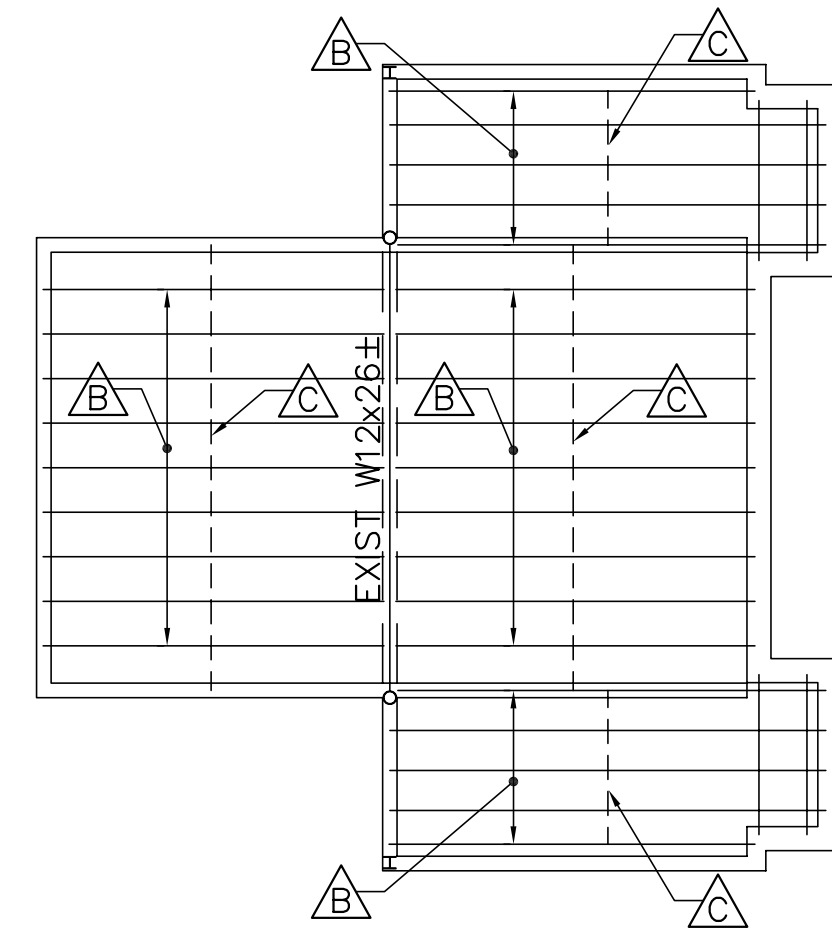
COORDINATE MECHANICAL OPENINGS THROUGH EXISTING CONCRETE SLAB/DECK WITH MECHANICAL DRAWINGS. SAWCUT AND REMOVE EXISTING CONCRETE SLAB/DECK WITHOUT DAMAGING EXISTING FRAMING AND ADJACENT EXISTING CONCRETE/DECK.

EXISTING KEYNOTES: (SHEETS SD105 AND SD106 ONLY)

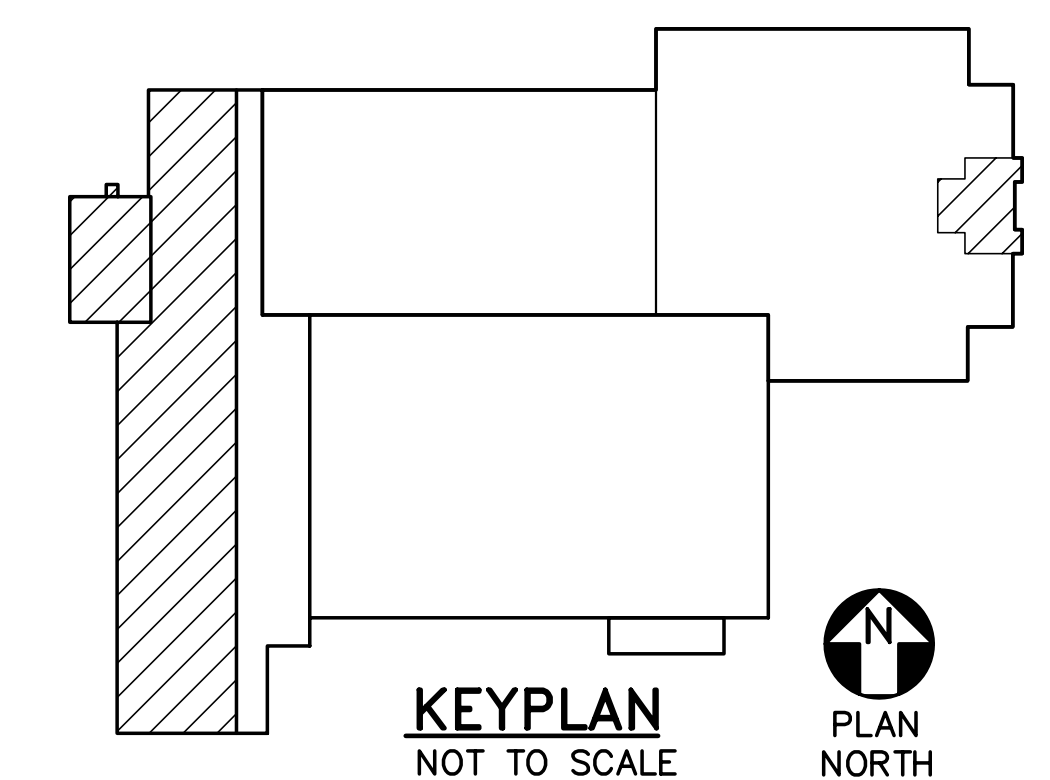
- △ EXISTING 2-1/2"± DRAPED STEEL MESH/CONCRETE ROOF SLAB.
- △ EXISTING 8"± STEEL JOISTS AT 20"± ON-CENTER.
- △ EXISTING STEEL X-BRIDGING.
- △ EXISTING STEEL BRIDGING.
- △ EXISTING STEEL PIPE COLUMN.
- △ EXISTING STEEL HEADER.

REMOVALS KEYNOTES: (SHEETS SD105 AND SD106 ONLY)

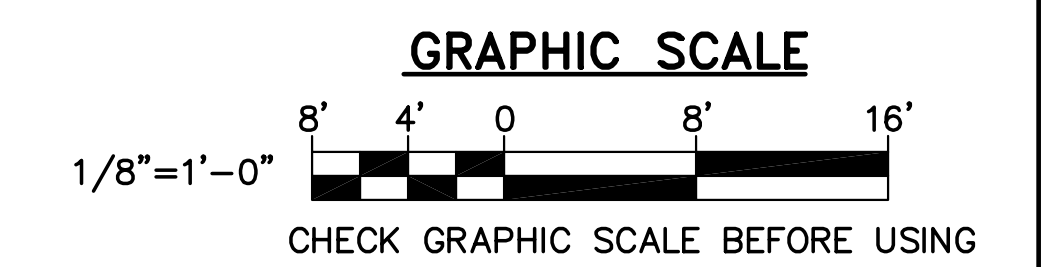
- △ SAWCUT AND REMOVE EXISTING 2-1/2"± DRAPED STEEL MESH/CONCRETE ROOF SLAB.
- △ REMOVE EXISTING 8"± STEEL JOISTS AT 20"± ON-CENTER.
- △ REMOVE EXISTING STEEL X-BRIDGING.
- △ SAWCUT AND REMOVE EXISTING 3"x18GA± ACCOUSTICAL ROOF DECK.
- △ SAWCUT AND REMOVE EXISTING 1-1/2"± ACCOUSTICAL ROOF DECK.
- △ REMOVE EXISTING STEEL BRIDGING.
- △ SAWCUT AND REMOVE EXISTING 2-1/2"± DRAPED STEEL MESH/CONCRETE ROOF SLAB AT EXISTING FLOOR OPENING. SEE DETAIL 2/SD501.



2 MONITOR ROOF FRAMING PLAN
SD106 SCALE: 1/8"=1'-0" PLAN NORTH



ROOF FRAMING REMOVALS PART PLAN



SCALE: AS NOTED
DATE: 05-24-16

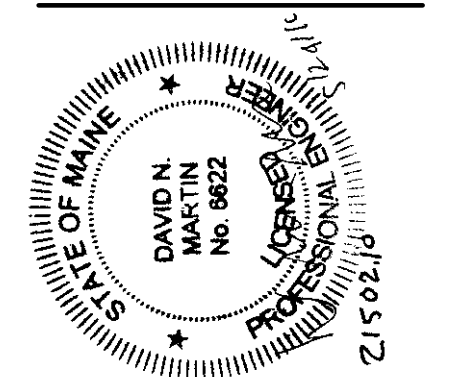
DWG. **SD106**

SHEET: **20** OF 169

UNIVERSITY OF NEW ENGLAND
PORTLAND CAMPUS
STEVEN AVENUE ARMORY
716 STEVENS AVE
PORTLAND, MAINE 04103
1(207)285-0171

RENOVATIONS TO THE
STEVEN AVENUE ARMORY

OAK POINT ASSOCIATES
231 Main Street, Biddeford, Maine 04005 (1)207-285-0100
www.oakpoint.com



DESIGNED BY: JEG
DRAWN BY: NJC
CHECKED BY: DNM
PROJECT: 21502.10