

DESIGNED BY: JEG
 DRAWN BY: MJC
 CHECKED BY: DNM
 PROJECT: 21502.10

UNIVERSITY OF NEW ENGLAND
 PORTLAND CAMPUS
 STEVENS AVENUE ARMORY
 716 STEVENS AVE
 PORTLAND, MAINE 04103
 (T) 207-263-0171

RENOVATIONS TO THE
 STEVENS AVENUE ARMORY

ROOF FRAMING REMOVALS PART PLAN

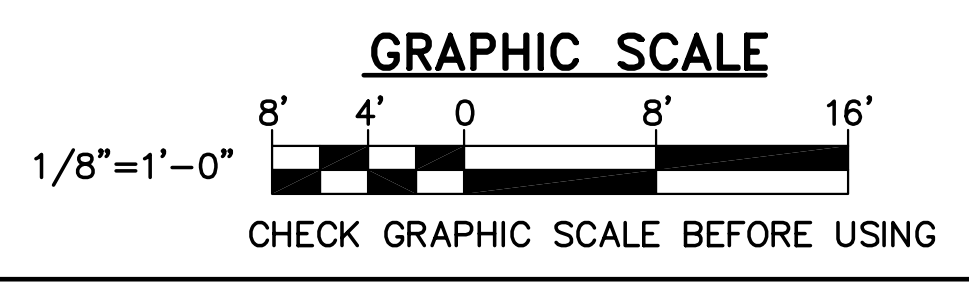
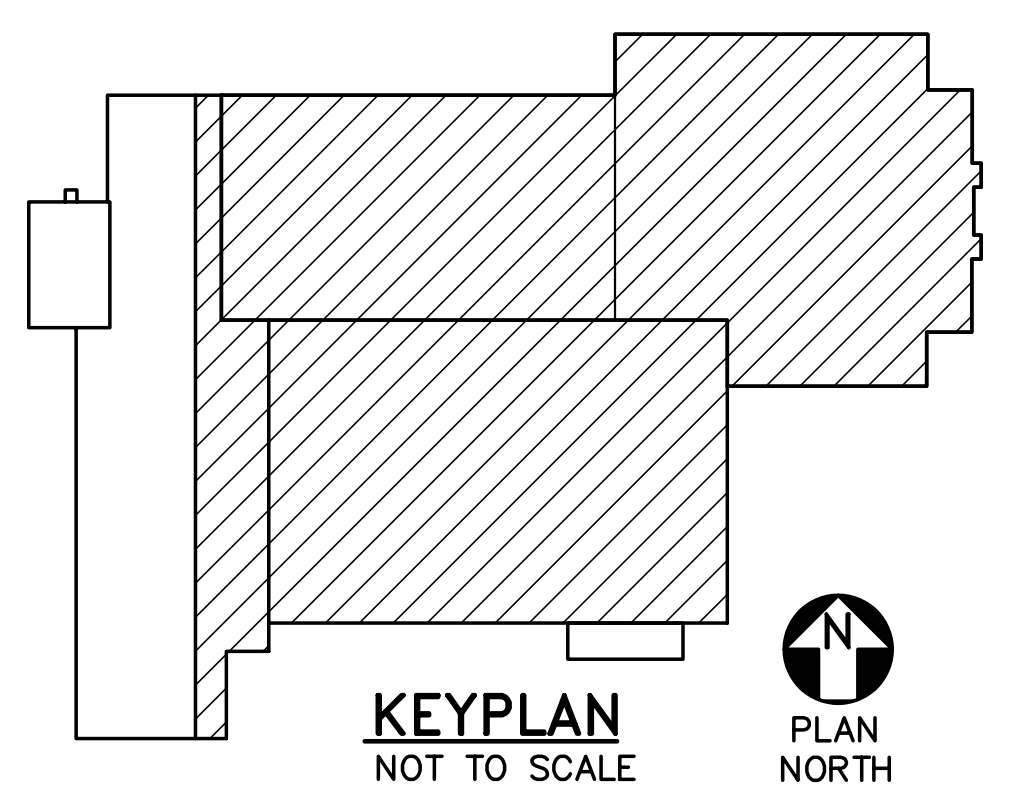
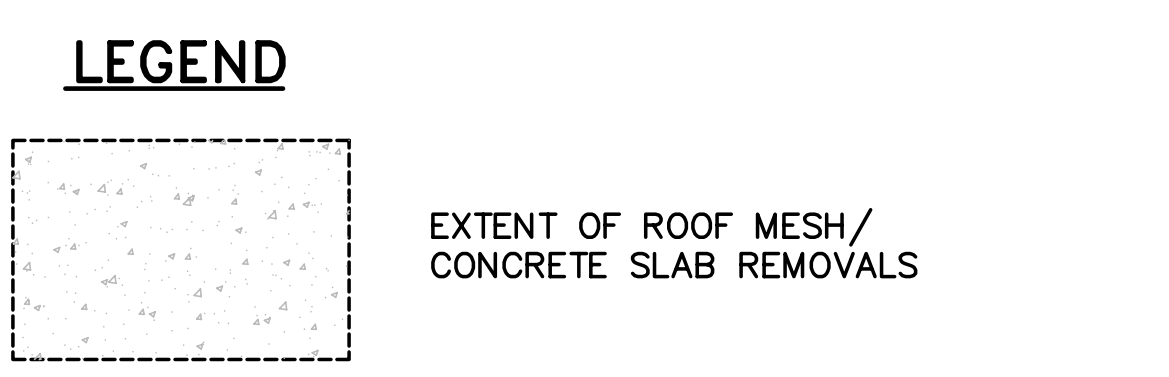
SCALE: AS NOTED
 DATE: 05-24-16

DWG. SD105

SHEET: 19 OF 169



- GENERAL SHEET NOTES:**
- SEE SHEET SD106 FOR EXISTING ROOF FRAMING KEYNOTES AND REMOVALS ROOF FRAMING KEYNOTES.
 - COORDINATE MECHANICAL OPENINGS THROUGH EXISTING CONCRETE SLAB/DECK WITH MECHANICAL DRAWINGS. SAWCUT AND REMOVE EXISTING CONCRETE SLAB/DECK WITHOUT DAMAGING EXISTING FRAMING AND ADJACENT EXISTING CONCRETE/DECK.



1. ROOF FRAMING REMOVALS PART PLAN
 SD105 SCALE: 1/8"=1'-0"