

DESIGNED BY: JEG
 DRAWN BY: MJC
 CHECKED BY: DNM
 PROJECT: 21502.10

UNIVERSITY OF NEW ENGLAND
 PORTLAND CAMPUS
 STEVEN AVENUE ARMORY
 718 STEVENS AVE
 PORTLAND, MAINE 04103
 (1) 207 283-0171

RENOVATIONS TO THE
 STEVENS AVENUE ARMORY

FIRST FLOOR
 FRAMING
 REMOVALS
 PLAN

SCALE: AS NOTED
 DATE: 05-24-16

DWG. SD103

SHEET: 17 OF 169

GENERAL SHEET NOTE:

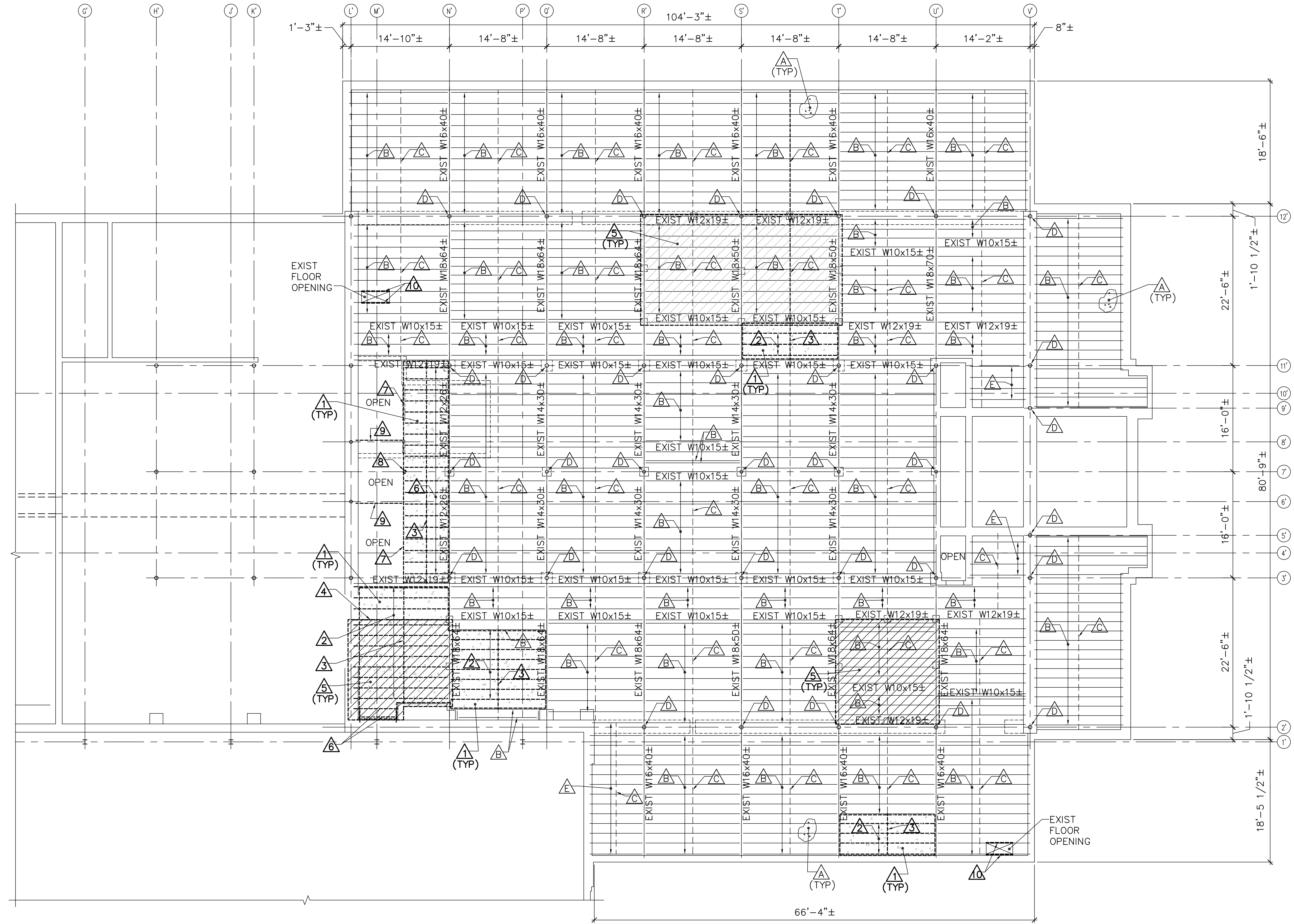
COORDINATE MECHANICAL OPENINGS THROUGH EXISTING CONCRETE SLAB/DECK WITH MECHANICAL DRAWINGS. SAWCUT AND REMOVE EXISTING CONCRETE SLAB/DECK WITHOUT DAMAGING EXISTING FRAMING AND ADJACENT EXISTING CONCRETE/DECK.

EXISTING KEYNOTES: (THIS SHEET ONLY)

- △ EXISTING 2-1/2"± DRAPED STEEL MESH/CONCRETE FLOOR SLAB.
- △ EXISTING 10"± STEEL JOISTS, SPACING VARIES.
- △ EXISTING STEEL X-BRIDGING.
- △ EXISTING STEEL PIPE COLUMN.
- △ EXISTING 8"± STEEL JOISTS, SPACING VARIES.

REMOVALS KEYNOTES: (THIS SHEET ONLY)

- △ SAWCUT AND REMOVE EXISTING 2-1/2"± DRAPED STEEL MESH/CONCRETE FLOOR SLAB.
- △ REMOVE EXISTING 10"± STEEL JOISTS, SPACING VARIES.
- △ REMOVE EXISTING STEEL X-BRIDGING.
- △ REMOVE EXISTING W10x15± STEEL BEAM.
- △ REMOVE EXISTING 7"± REINFORCED CONCRETE FLOOR SLAB OVER EXISTING 2-1/2"± DRAPED STEEL MESH/CONCRETE FLOOR SLAB. REMOVE EXISTING 5"± REINFORCED CONCRETE CEILING SLAB 8'-0"± ABOVE FINISHED FLOOR. SEE DETAIL 1/SD501.
- △ REMOVE EXISTING 8"± STEEL JOISTS, SPACING VARIES.
- △ REMOVE EXISTING W14x30± STEEL BEAM.
- △ REMOVE EXISTING STEEL PIPE COLUMN.
- △ REMOVE EXISTING S7x15.3±.
- △ SAWCUT AND REMOVE EXISTING 2-1/2"± DRAPED STEEL MESH/CONCRETE FLOOR SLAB AT EXISTING FLOOR OPENING. SEE DETAIL 2/SD501.

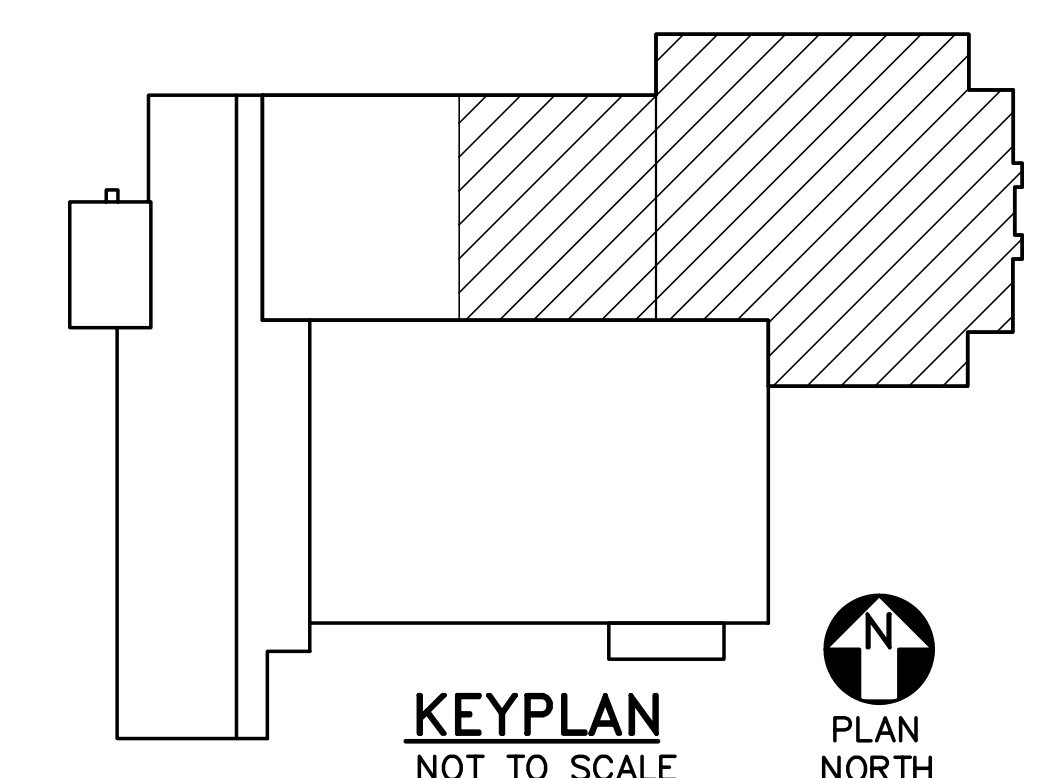


1 FIRST FLOOR FRAMING REMOVALS PLAN
 SD103 SCALE: 1/8"=1'-0"



LEGEND

- EXTENT OF ROOF MESH/ CONCRETE SLAB REMOVALS
- EXTENT OF VAULT FLOOR SLAB/ CEILING SLAB REMOVALS



KEYPLAN
 NOT TO SCALE
 PLAN NORTH

