

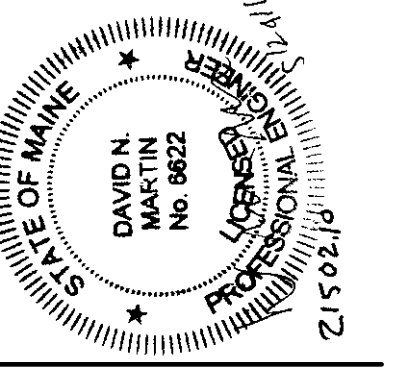
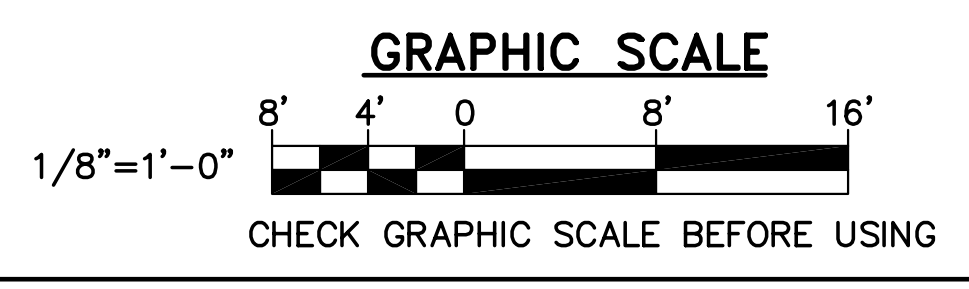
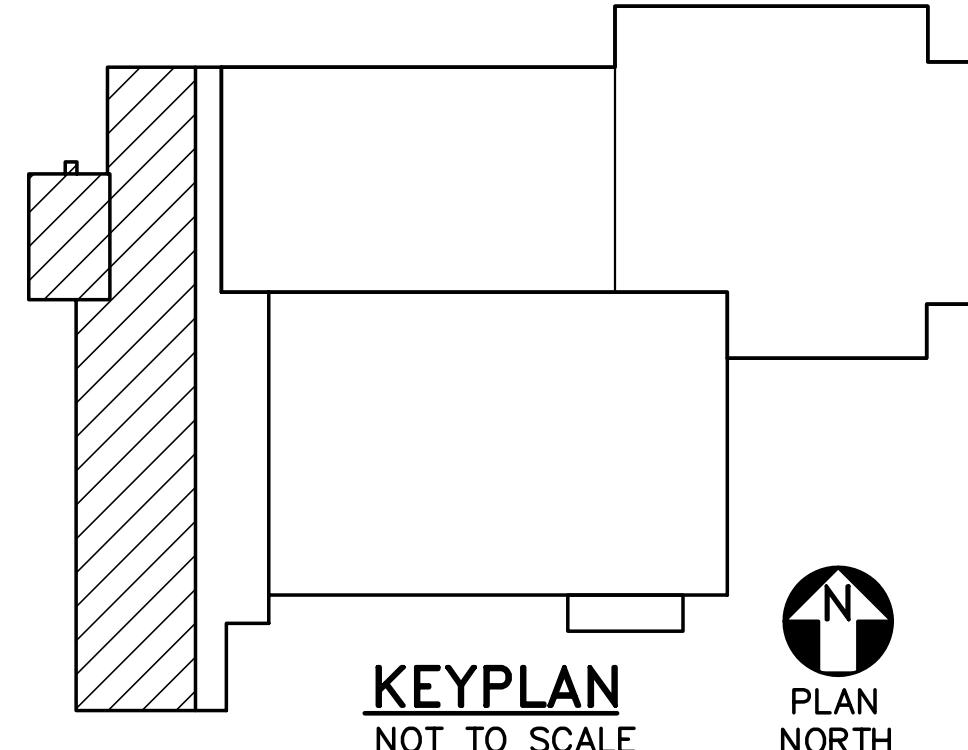
EXISTING KEYNOTES: (SHEETS SD101 AND SD102 ONLY)

- △ EXISTING 9"± REINFORCED CONCRETE SLAB-ON-GRADE.
- △ EXISTING 6"± REINFORCED CONCRETE SLAB-ON-GRADE.
- △ EXISTING 4"± REINFORCED CONCRETE SLAB-ON-GRADE.
- △ EXISTING CONCRETE FOUNDATION WALL.
- △ EXISTING CONCRETE WALL FOOTING.
- △ EXISTING 2'-0"± WIDE x 9"± DEEP WALL FOOTING.
- △ EXISTING 1'-4"± WIDE x 8"± DEEP WALL FOOTING.
- △ EXISTING 2'-0"± WIDE x 2'-0"± DEEP WALL FOOTING.
- △ EXISTING 6'-0"± x 5'-0"± x 1'-0"± REINFORCED CONCRETE SPREAD FOOTING.
- △ EXISTING 6'-0"± x 3'-6"± x 1'-0"± REINFORCED CONCRETE SPREAD FOOTING.
- △ EXISTING 5'-0"± x 5'-0"± x 1'-4"± REINFORCED CONCRETE SPREAD FOOTING.
- △ EXISTING 4'-6"± x 4'-6"± x 1'-4"± REINFORCED CONCRETE SPREAD FOOTING.
- △ EXISTING 3'-0"± x 5'-0"± x 1'-0"± REINFORCED CONCRETE SPREAD FOOTING.
- △ EXISTING 2'-0"± x 2'-0"± x 1'-0"± CONCRETE SPREAD FOOTING.
- △ EXISTING 5'-9"± x 2'-2"± CONCRETE PIER/FOOTING.
- △ EXISTING 4'-3"± x 2'-2"± CONCRETE PIER/FOOTING.
- △ EXISTING 1'-0"± x 1'-0"± BRICK PIER.
- △ EXISTING 1'-8"± x 1'-8"± CONCRETE PIER.
- △ EXISTING 1'-4"± x 1'-4"± CONCRETE PIER.
- △ EXISTING 4'-0"± x 4'-0"± x 1'-0"± CONCRETE SPREAD FOOTING.

REMOVALS KEYNOTES: (SHEETS SD101 AND SD102 ONLY)

- △ SAWCUT AND REMOVE EXISTING 9"± REINFORCED CONCRETE SLAB-ON-GRADE.
- △ SAWCUT AND REMOVE EXISTING 6"± REINFORCED CONCRETE SLAB-ON-GRADE.
- △ REMOVE EXISTING 2'-0"± x 2'-0"± x 1'-0"± CONCRETE SPREAD FOOTING.
- △ REMOVE EXISTING 1'-0"± x 1'-0"± BRICK PIER.
- △ REMOVE EXISTING CONCRETE CURB.
- △ REMOVE EXISTING REINFORCED CONCRETE SLAB AND EXISTING WOOD FORM WORK OVER EXISTING PIPE TRENCH. PRIOR TO REMOVAL, TEMPORARILY SUPPORT EXISTING UTILITIES IN TRENCH TO REMAIN AND PROTECT DURING THE REMOVAL PROCESS.
- △ SAWCUT AND REMOVE PORTION OF EXISTING STONE AND CONCRETE FOUNDATION WALL FOR INSTALLATION OF ELEVATOR PIT.
- △ SAWCUT AND REMOVE TOP 1'-0"± OF EXISTING CONCRETE FOUNDATION WALL.
- △ SAWCUT AND REMOVE PORTION OF EXISTING 2'-5"± CONCRETE FOUNDATION WALL. SEE DETAIL 4/SD501.
- △ SAWCUT AND REMOVE PORTION OF EXISTING 1'-8"± CONCRETE FOUNDATION WALL. SEE DETAIL 5/SD501.
- △ SAWCUT AND REMOVE PORTION OF EXISTING 1'-7"± CONCRETE FOUNDATION WALL. SEE DETAIL 4/SD501.
- △ SAWCUT AND REMOVE PORTION OF EXISTING 8"± CONCRETE FOUNDATION WALL. SEE DETAIL 6/SD501.
- △ SAWCUT AND REMOVE TOP 2'-0" OF EXISTING CONCRETE FOUNDATION WALL.

1 FOUNDATION REMOVALS PART PLAN
SD102 SCALE: 1/8"=1'-0"



DESIGNED BY: JEG
DRAWN BY: MJC
CHECKED BY: DMW
PROJECT: 21502.10

**UNIVERSITY OF NEW ENGLAND
PORTLAND CAMPUS**
STEVEN AVENUE ARMORY
718 STEVENS AVE
PORTLAND, MAINE 04103
1(207)283-0171

**RENOVATIONS TO THE
STEVENS AVENUE ARMORY**

**FOUNDATION
REMOVALS
PART
PLAN**

SCALE: AS NOTED
DATE: 05-24-16

DWG. **SD102**

SHEET: **16** OF **169**