

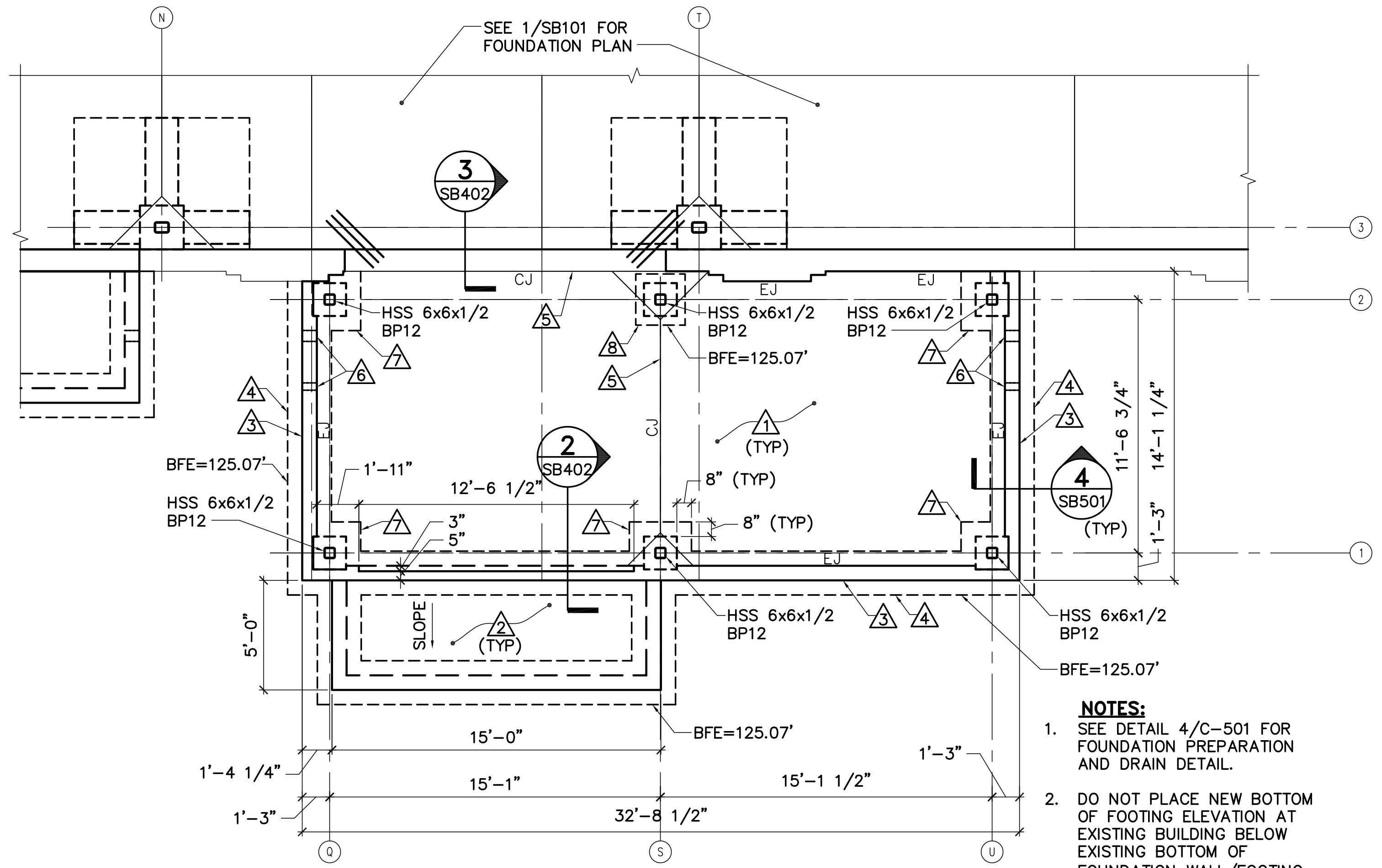
JEG
 NJC
 DNM
 21502.10
 DESIGNED BY:
 DRAWN BY:
 CHECKED BY:
 PROJECT:

UNIVERSITY OF NEW ENGLAND
 PORTLAND CAMPUS
 STEVEN AVENUE ARMORY
 716 STEVEN AVENUE
 PORTLAND, MAINE 04103
 1(207)263-0171

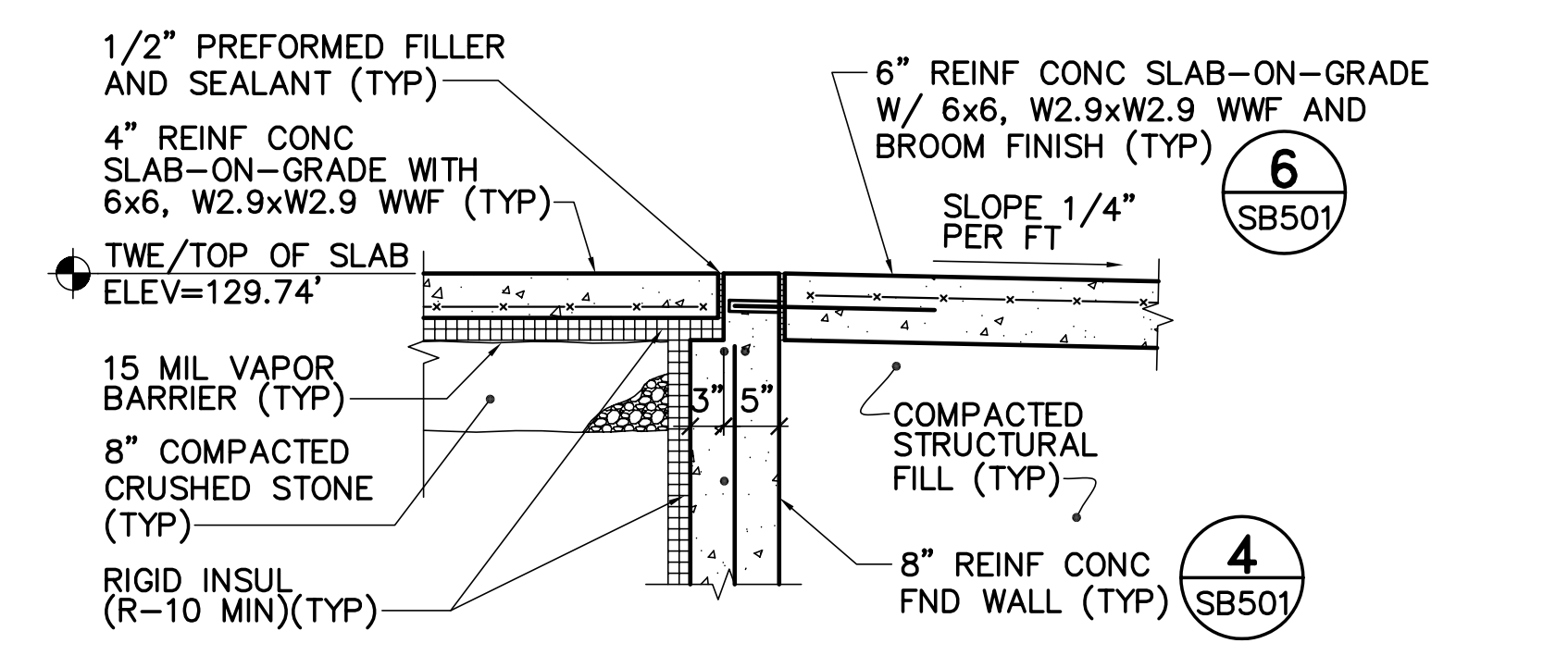
RENOVATIONS TO THE
 STEVEN AVENUE ARMORY

ENLARGED FOUNDATION PLANS AND DETAILS

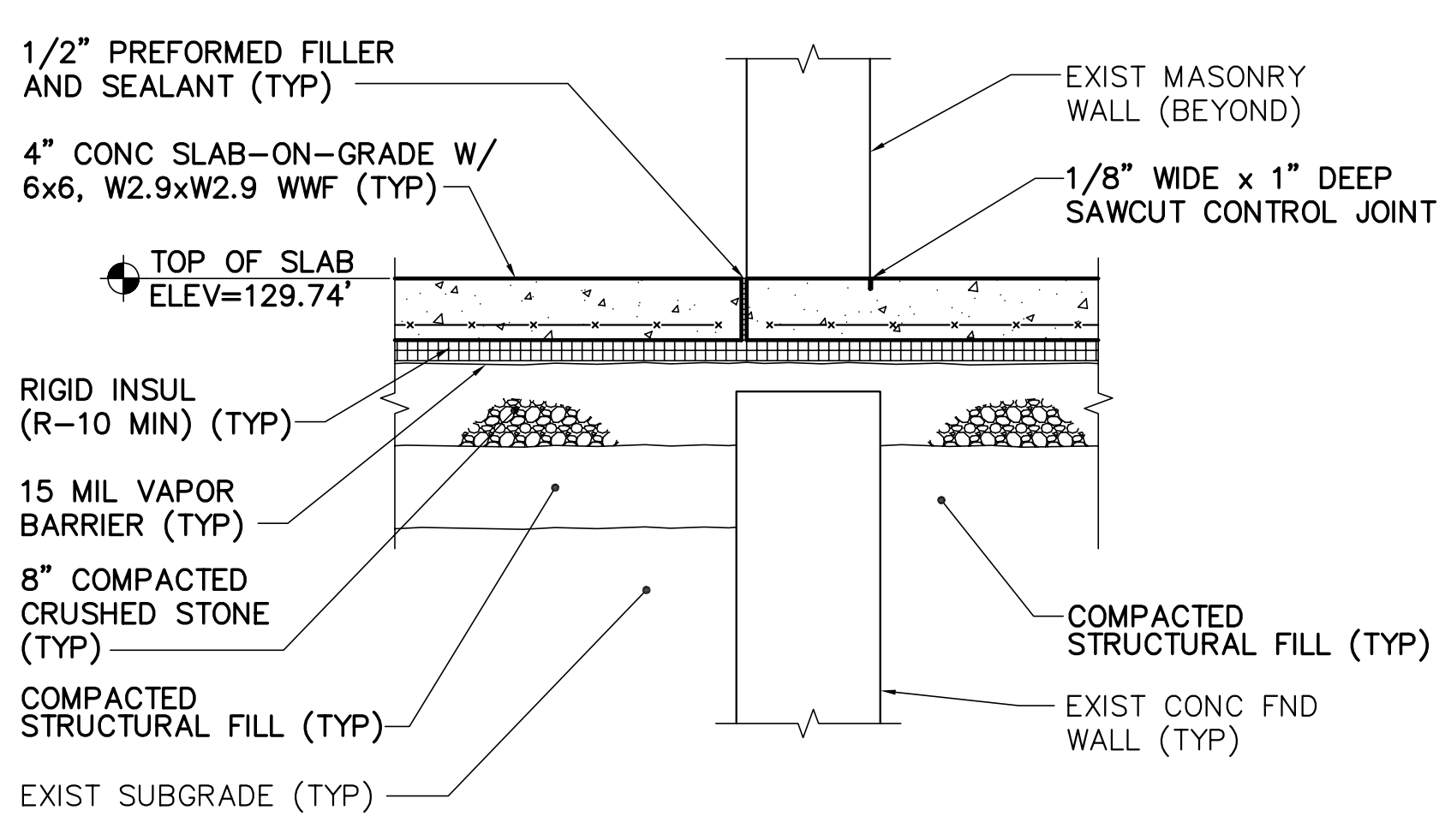
- KEYNOTES:** (THIS SHEET ONLY)
- ⚠ 4" REINFORCED CONCRETE SLAB-ON-GRADE WITH 6x6, W2.9xW2.9 WELDED WIRE FABRIC. TOP OF SLAB ELEVATION = 129.74'.
 - ⚠ REINFORCED CONCRETE STOOP. SEE DETAIL 6/SB501.
 - ⚠ 8" REINFORCED CONCRETE FOUNDATION WALL. SEE DETAIL 4/SB501.
 - ⚠ 1'-0" THICK x 2'-0" WIDE CONTINUOUS REINFORCED CONCRETE WALL FOOTING. SEE DETAIL 4/SB501.
 - ⚠ 1/8" WIDE x 1" DEEP SAWCUT CONTROL JOINT.
 - ⚠ UTILITY SLEEVE(S). COORDINATE EXACT QUANTITY, SIZE, LOCATION AND ELEVATION WITH CIVIL, PLUMBING AND ELECTRICAL PLANS.
 - ⚠ ENLARGED WALL FOOTING AT COLUMN/PIER WITH (4) #5'S EACH WAY AT BOTTOM OF FOOTING.
 - ⚠ 2'-3"x2'-3"x1'-0" DEEP REINFORCED CONCRETE FOOTING WITH (2) #5'S EACH WAY AT BOTTOM OF FOOTING.
 - ⚠ 5" LIGHT WEIGHT CONCRETE SLAB WITH 2"x18GA GALVANIZED COMPOSITE STEEL DECK AND #4'S BOTTOM IN EACH DECK FLUTE AND #4'S TOP AT 1'-0" ON-CENTER.
 - ⚠ 6" REINFORCED CONCRETE SLAB-ON-GRADE WITH 6x6, W2.9xW2.9 WELDED WIRE FABRIC. TOP OF SLAB ELEVATION = 129.74'.



1 ENLARGED STAIR S01 FOUNDATION PLAN
 SB402 SCALE: 1/4"=1'-0"
 PLAN NORTH

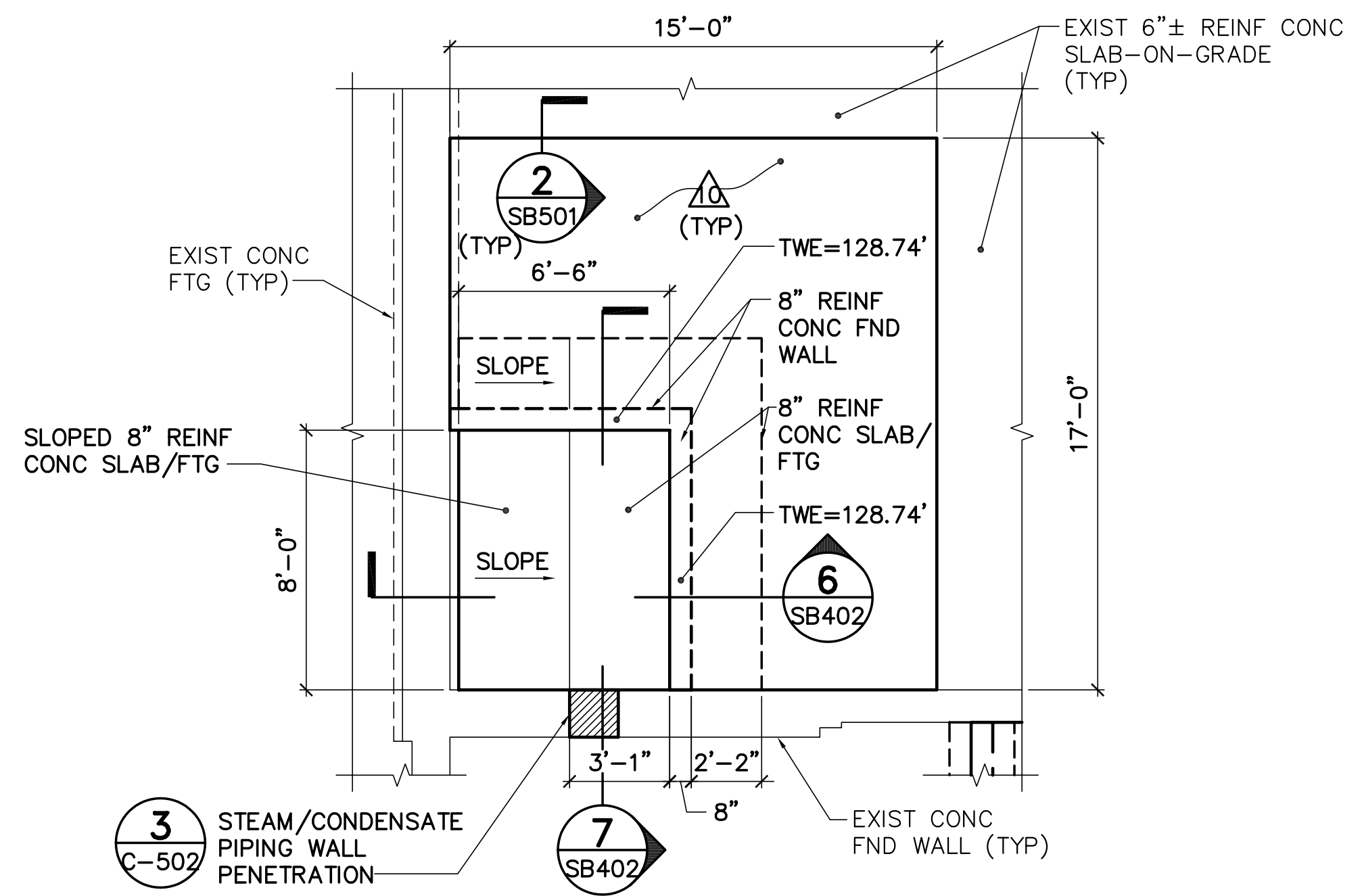


2 TYP EXT FND DETAIL AT DOOR
 SB402 SCALE: 3/4"=1'-0"

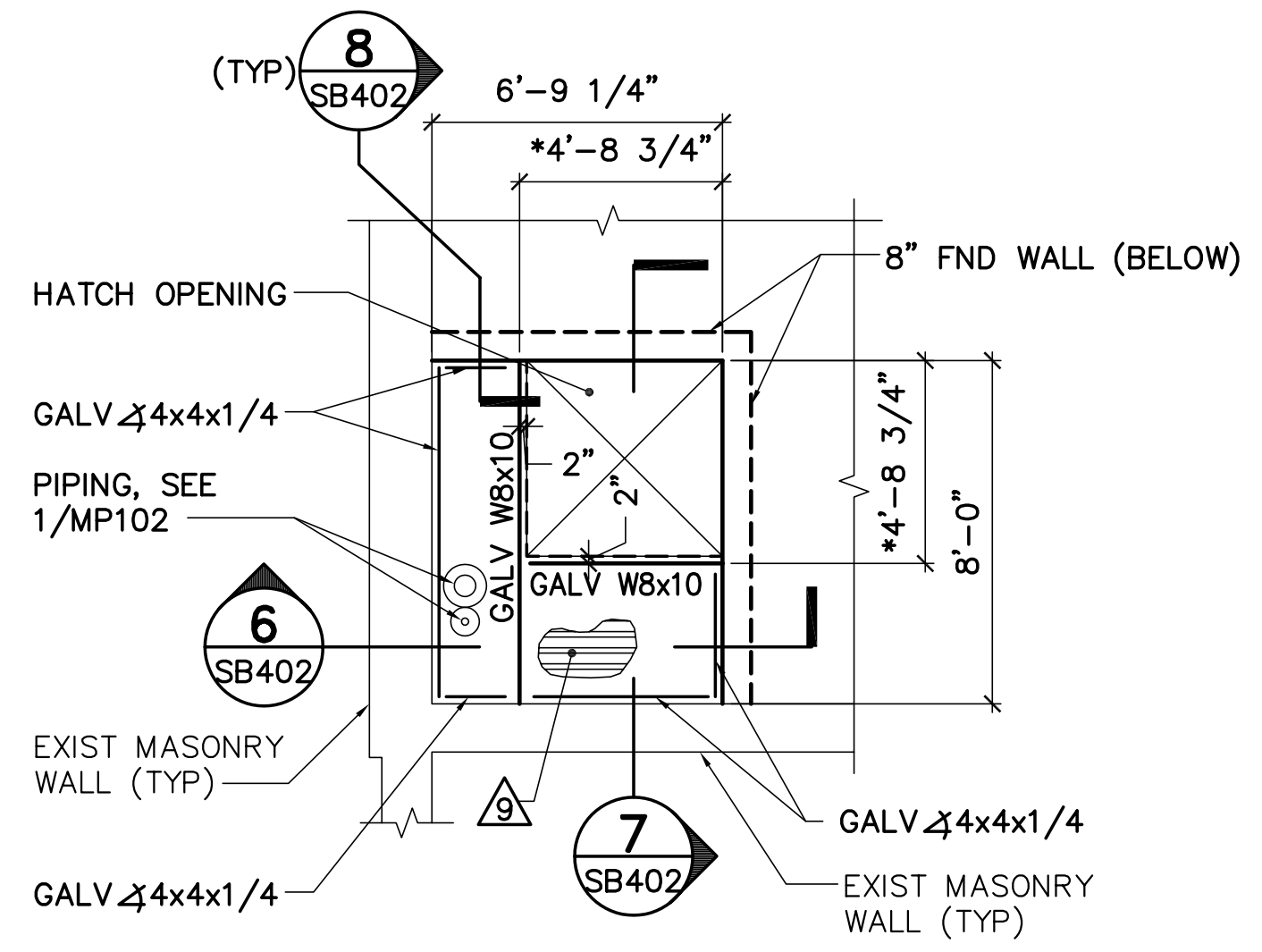


3 4" SLAB TRANSITION DETAIL AT EXIST FND WALL
 SB101, SB402 SCALE: 3/4"=1'-0"

- NOTES:**
1. SEE DETAIL 4/C-501 FOR FOUNDATION PREPARATION AND DRAIN DETAIL.
 2. DO NOT PLACE NEW BOTTOM OF FOOTING ELEVATION AT EXISTING BUILDING BELOW EXISTING BOTTOM OF FOUNDATION WALL/FOOTING ELEVATION. DO NOT UNDERMINE EXISTING FOUNDATION WALL/FOOTING.
 3. TOP OF PIER ELEVATION = 128.99', UNLESS NOTED OTHERWISE.

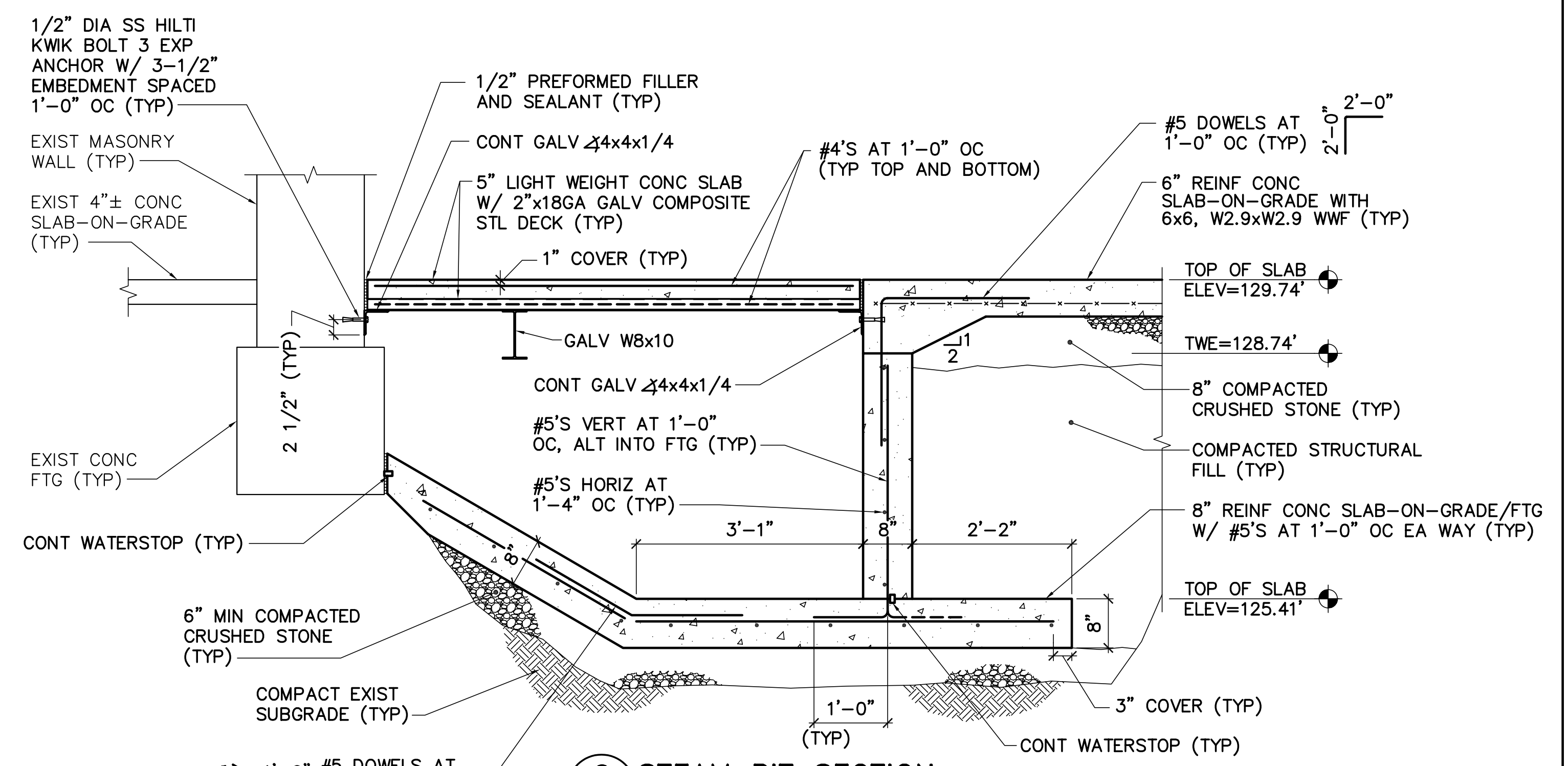


4 ENLARGED STEAM PIT FOUNDATION PLAN
 SB402 SCALE: 1/4"=1'-0"
 PLAN NORTH

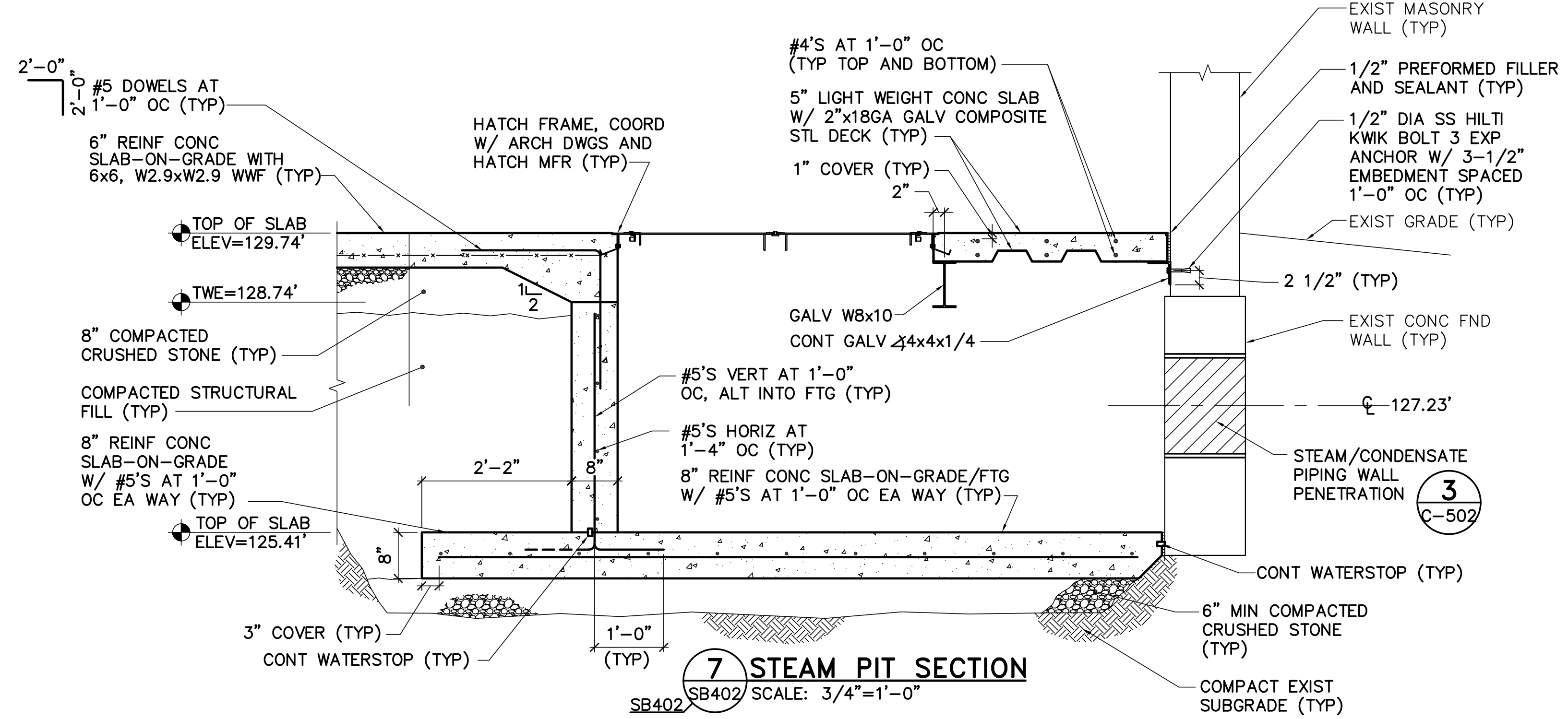


5 ENLARGED STEAM PIT FLOOR FRAMING PLAN
 SB101, AE101, SB402 SCALE: 1/4"=1'-0"
 PLAN NORTH

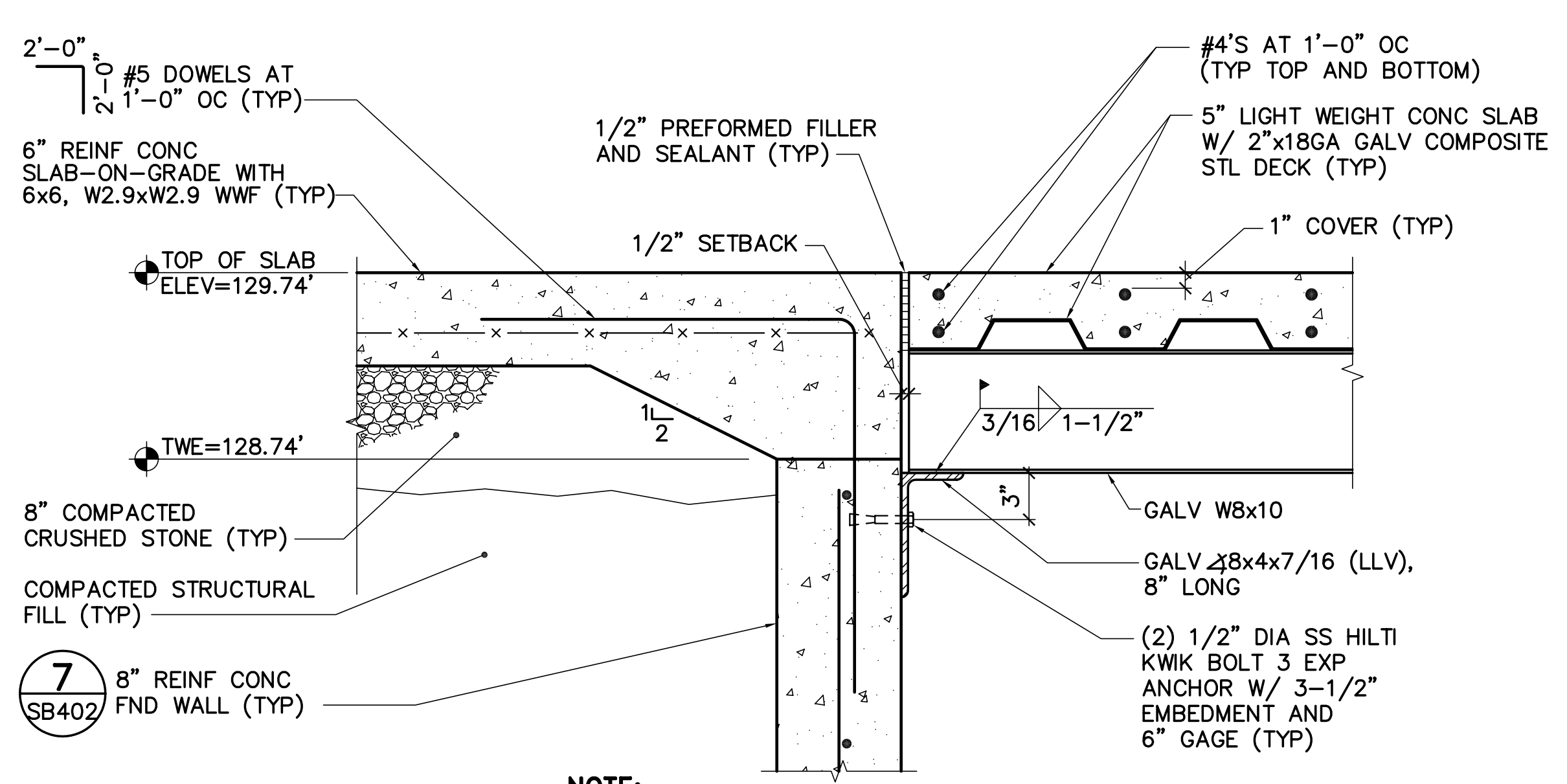
- NOTES:**
1. W8x10'S HAVE A FACTORED END REACTION OF 10 KIPS, UNLESS NOTED OTHERWISE.
 2. GALVANIZE ALL MEMBERS, CONNECTIONS AND WELDS.
 3. * - COORDINATE WITH ARCHITECTURAL PLANS AND HATCH MANUFACTURER.



6 STEAM PIT SECTION
 SB402 SCALE: 3/4"=1'-0"



7 STEAM PIT SECTION
 SB402 SCALE: 3/4"=1'-0"



8 W8x10 TO REIN CONC FND WALL CONN DETAIL
 SB402 SCALE: 1-1/2"=1'-0"

NOTE:
 USE SIMILAR CONNECTION AT OPPOSITE END OF W8x10 TO EXISTING CONCRETE FOUNDATION WALL.

