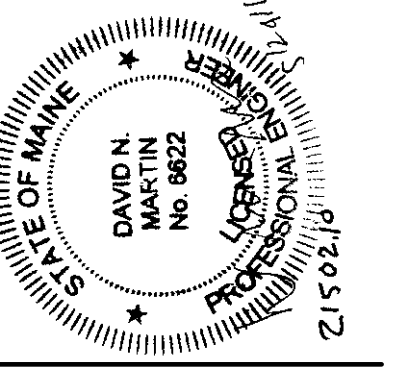
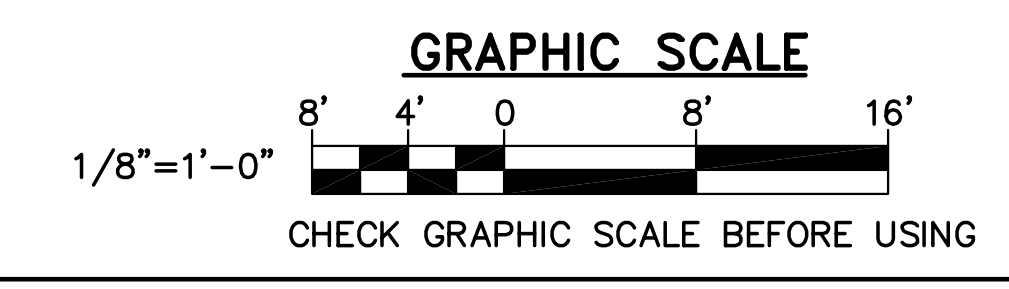
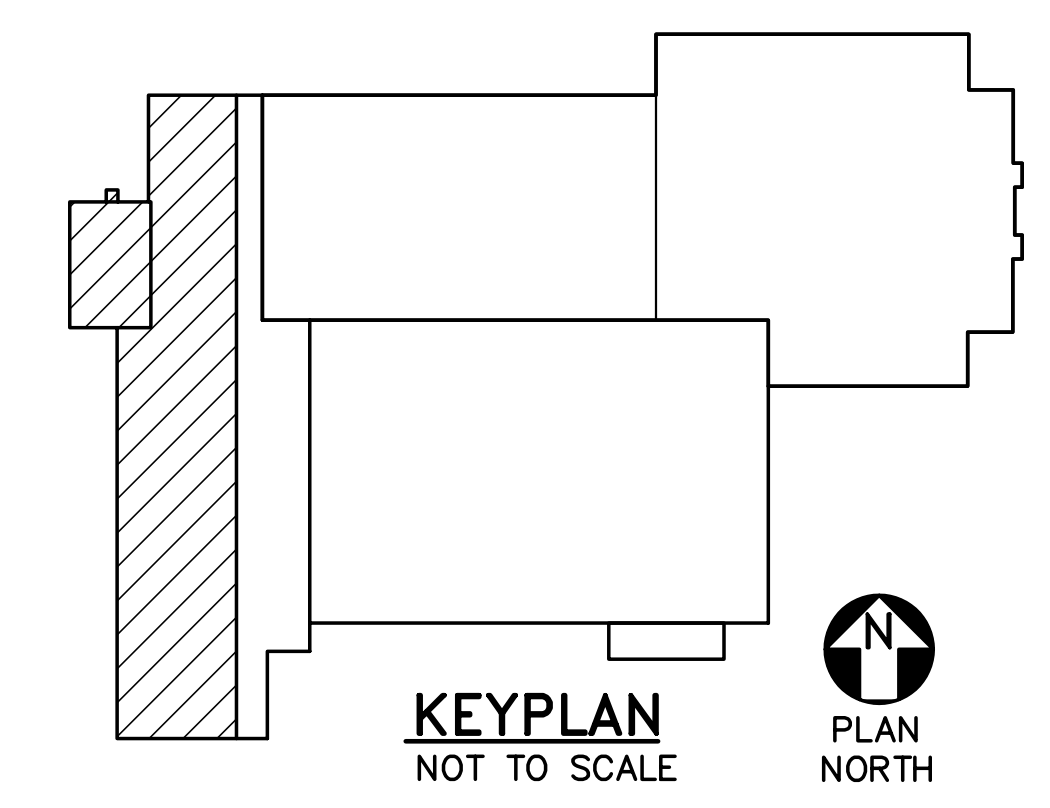


- EXISTING KEYNOTES: (SHEETS SB101 AND SB102 ONLY)**
- △ EXISTING 9"± REINFORCED CONCRETE SLAB-ON-GRADE.
 - △ EXISTING 6"± REINFORCED CONCRETE SLAB-ON-GRADE.
 - △ EXISTING 4"± REINFORCED CONCRETE SLAB-ON-GRADE.
 - △ EXISTING CONCRETE FOUNDATION WALL.
 - △ EXISTING CONCRETE WALL FOOTING.
 - △ EXISTING 2'-0"± WIDE x 9"± DEEP WALL FOOTING.
 - △ EXISTING 1'-4"± WIDE x 8"± DEEP WALL FOOTING.
 - △ EXISTING 2'-0"± WIDE x 2'-0"± DEEP WALL FOOTING.
 - △ EXISTING 6'-0"± x 5'-0"± x 1'-0"± REINFORCED CONCRETE SPREAD FOOTING.
 - △ EXISTING 6'-0"± x 3'-6"± x 1'-0"± REINFORCED CONCRETE SPREAD FOOTING.
 - △ EXISTING 5'-0"± x 5'-0"± x 1'-4"± REINFORCED CONCRETE SPREAD FOOTING.
 - △ EXISTING 4'-6"± x 4'-6"± x 1'-4"± REINFORCED CONCRETE SPREAD FOOTING.
 - △ EXISTING 3'-0"± x 5'-0"± x 1'-0"± REINFORCED CONCRETE SPREAD FOOTING.
 - △ EXISTING 2'-0"± x 2'-0"± x 1'-0"± CONCRETE SPREAD FOOTING.
 - △ EXISTING 5'-9"± x 2'-2"± CONCRETE PIER/FOOTING.
 - △ EXISTING 4'-3"± x 2'-2"± CONCRETE PIER/FOOTING.
 - △ EXISTING 1'-0"± x 1'-0"± BRICK PIER.
 - △ EXISTING 1'-8"± x 1'-8"± CONCRETE PIER.
 - △ EXISTING 1'-4"± x 1'-4"± CONCRETE PIER.
 - △ EXISTING 4'-0"± x 4'-0"± x 1'-0"± CONCRETE SPREAD FOOTING.

- KEYNOTES: (SHEETS SB101 AND SB102 ONLY)**
- △ 4" REINFORCED CONCRETE SLAB-ON-GRADE WITH 6x6, W2.9xW2.9 WELDED WIRE FABRIC.
 - △ CONCRETE FILL AT EXISTING EXTERIOR FOUNDATION WALL. SEE DETAIL 5/SB501.
 - △ REINFORCED CONCRETE STOOP. SEE DETAIL 6/SB501.
 - △ HSS 8x6x3/8 COLUMN AND BASE PLATE. SEE DETAIL 1/SF503.
 - △ 1/8" WIDE x 1" DEEP SAWCUT CONTROL JOINT.
 - △ REINFORCED CONCRETE ELEVATOR PIT WITH 1'-0" THICK REINFORCED CONCRETE ELEVATOR PIT SLAB. TOP OF SLAB ELEVATION=125.03'. SEE DETAIL 7/SB501.
 - △ 1'-6"x1'-6"x2'-0" DEEP SUMP PIT. SEE DETAIL 8/SB501. COORDINATE EXACT LOCATION WITH ELEVATOR MANUFACTURER AND PLUMBING PLANS PRIOR TO FABRICATION OF REINFORCING STEEL.
 - △ (3) #4 DOWELS, 3'-0" LONG, AT 4" ON-CENTER. LOCATE IN MIDDLE OF SLAB.
 - △ UTILITY SLEEVE(S). COORDINATE EXACT QUANTITY, SIZE, LOCATION AND ELEVATION WITH CIVIL, PLUMBING AND ELECTRICAL PLANS.
 - △ 1'-0" THICK x 2'-0" WIDE CONTINUOUS REINFORCED CONCRETE WALL FOOTING. SEE DETAIL 5/SB502.
 - △ CONCRETE SLAB PATCH AT EXISTING CURB/COLUMN REMOVAL.
 - △ 1'-0" THICK x 1'-0" WIDE THICKENED SLAB WITH CONTINUOUS (2) #5'S.

1 FOUNDATION PART PLAN
 SB102 SCALE: 1/8"=1'-0"
 PLAN NORTH



DESIGNED BY: JEG
 DRAWN BY: MJC
 CHECKED BY: DNM
 PROJECT: 21502.10

**UNIVERSITY OF NEW ENGLAND
 PORTLAND CAMPUS**
 STEVEN AVENUE ARMORY
 718 STEVENS AVE
 PORTLAND, MAINE 04103
 (207)283-0171

**RENOVATIONS TO THE
 STEVENS AVENUE ARMORY**

**FOUNDATION
 PART
 PLAN**

SCALE: AS NOTED
 DATE: 05-24-16

DWG. **SB102**

SHEET: **23** OF 169