

DESIGNED BY: SMC  
 DRAWN BY: RDA  
 CHECKED BY: MSA  
 PROJECT: 21502.10

UNIVERSITY OF NEW ENGLAND  
 PORTLAND CAMPUS  
 STEVEN AVENUE ARMORY  
 716 STEVENS AVE  
 PORTLAND, MAINE 04103  
 T (207) 283-0171

RENOVATIONS TO THE  
 STEVENS AVENUE ARMORY

SECOND FLOOR  
 PLUMBING  
 REMOVALS  
 PART PLAN

SCALE: AS NOTED  
 DATE: 05-24-16

DWG. PD103

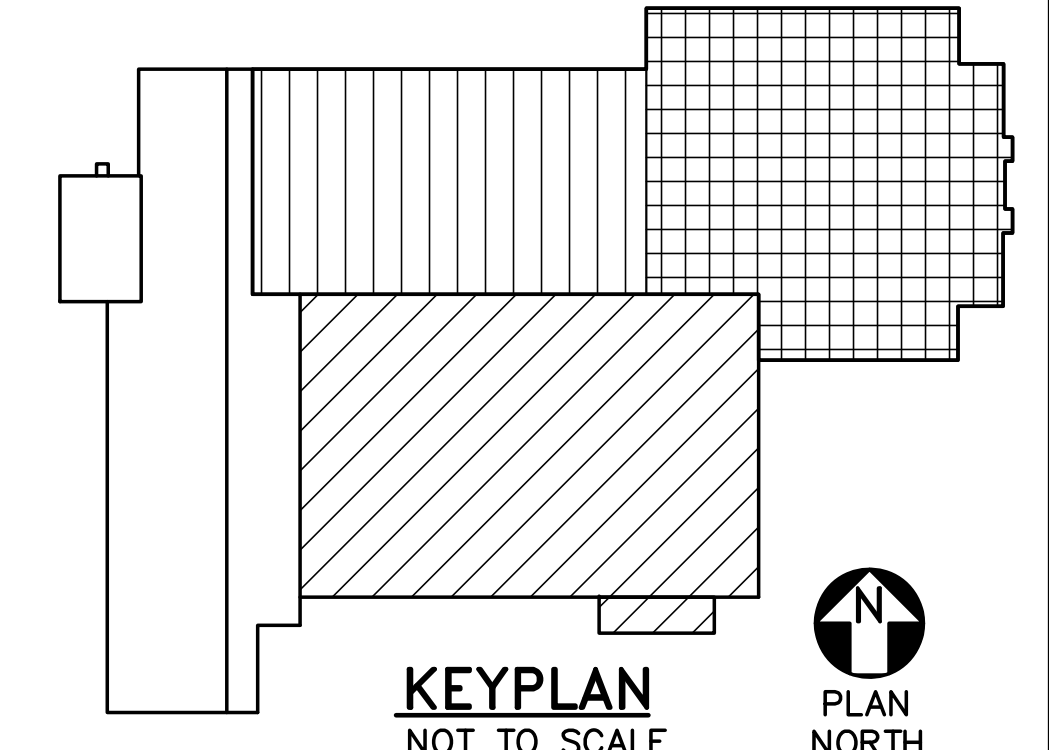
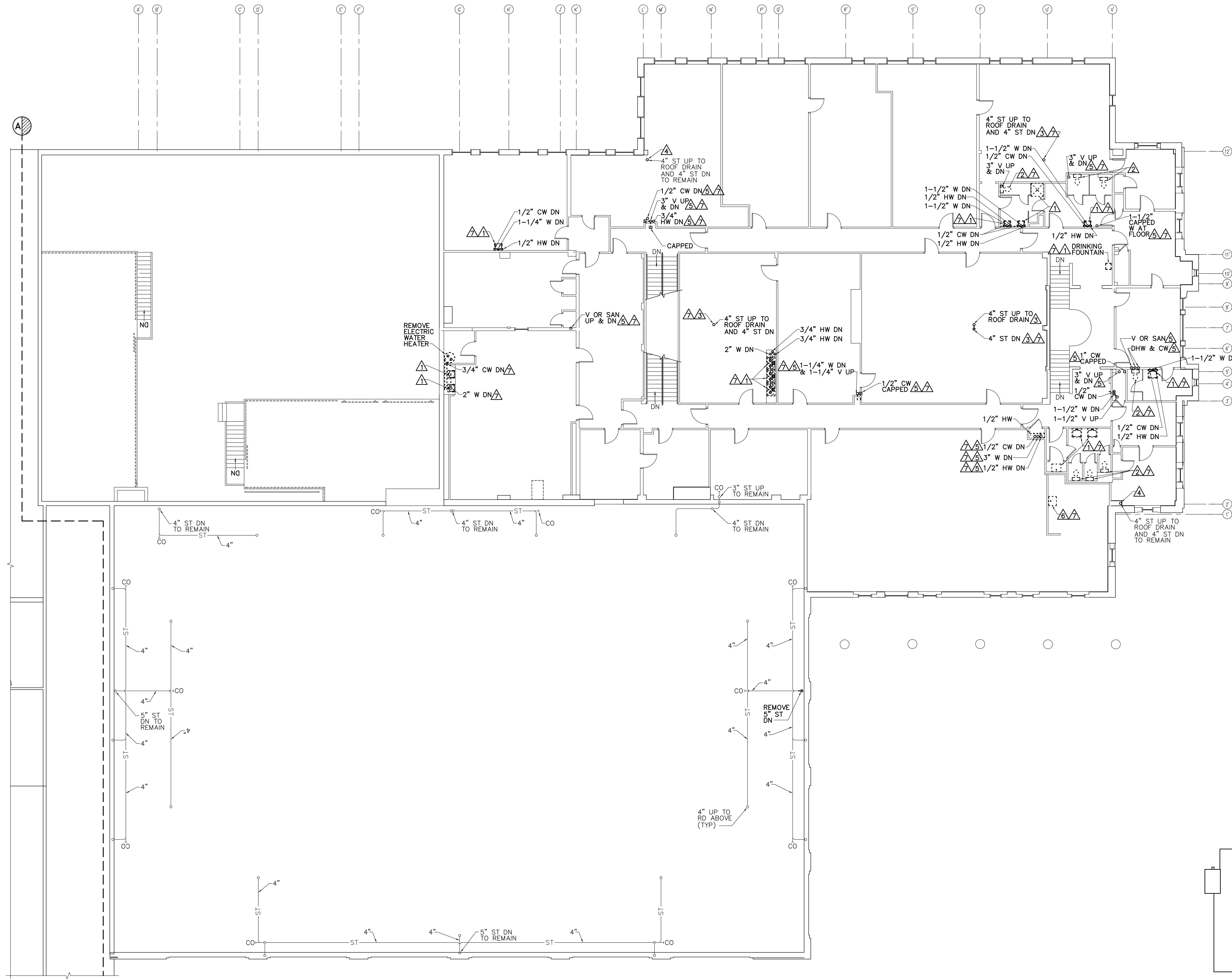
SHEET: 114 OF 169

**DRAWING NOTES**

- REMOVALS TO INCLUDE PIPE INSULATION, HANGERS AND SUPPORTS.

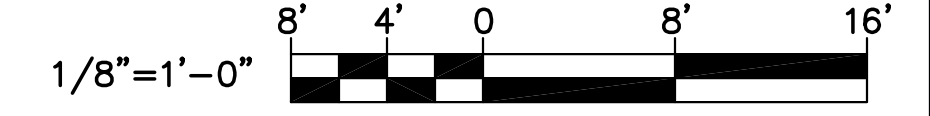
**DRAWING KEYNOTES**

- △ REMOVE PLUMBING FIXTURE AND ASSOCIATED CW, HW, VENT AND WASTE PIPING AND ACCESSORIES.
- △ REMOVE WATER CLOSET AND ASSOCIATED CW, VENT AND SANITARY PIPING AND ACCESSORIES.
- △ REMOVE ROOF DRAIN ABOVE AND 4" ST DN.
- △ REMOVE ROOF DRAIN ABOVE.
- △ REMOVE VERTICAL PIPING INDICATED.
- △ REMOVE KITCHEN SINK AND ASSOCIATED CW, HW, VENT AND WASTE PIPING AND ACCESSORIES. KITCHEN SINK SHALL BE STORED FOR REINSTALLATION. REFER TO SHEET P-103.
- △ PATCH HOLES IN FLOOR. REFER TO DETAIL 12/SF501.



KEYPLAN  
 NOT TO SCALE  
 PLAN NORTH

GRAPHIC SCALE



CHECK GRAPHIC SCALE BEFORE USING

**1 SECOND FLOOR PLUMBING REMOVALS PART PLAN**  
 PD103 SCALE: 1/8"=1'-0" PLAN NORTH