

SMC RDA MSA  
 DESIGNED BY: SMC  
 DRAWN BY: RDA  
 CHECKED BY: MSA  
 PROJECT: 21502.10

**UNIVERSITY OF NEW ENGLAND  
 PORTLAND CAMPUS**  
 STEVEN AVENUE ARMORY  
 716 STEVENS AVE  
 PORTLAND, MAINE 04103  
 T (207) 283-0171

**RENOVATIONS TO THE  
 STEVENS AVENUE ARMORY**

**CRAWL SPACE/  
 UNDERSLAB  
 PLUMBING  
 REMOVALS  
 PART PLAN**

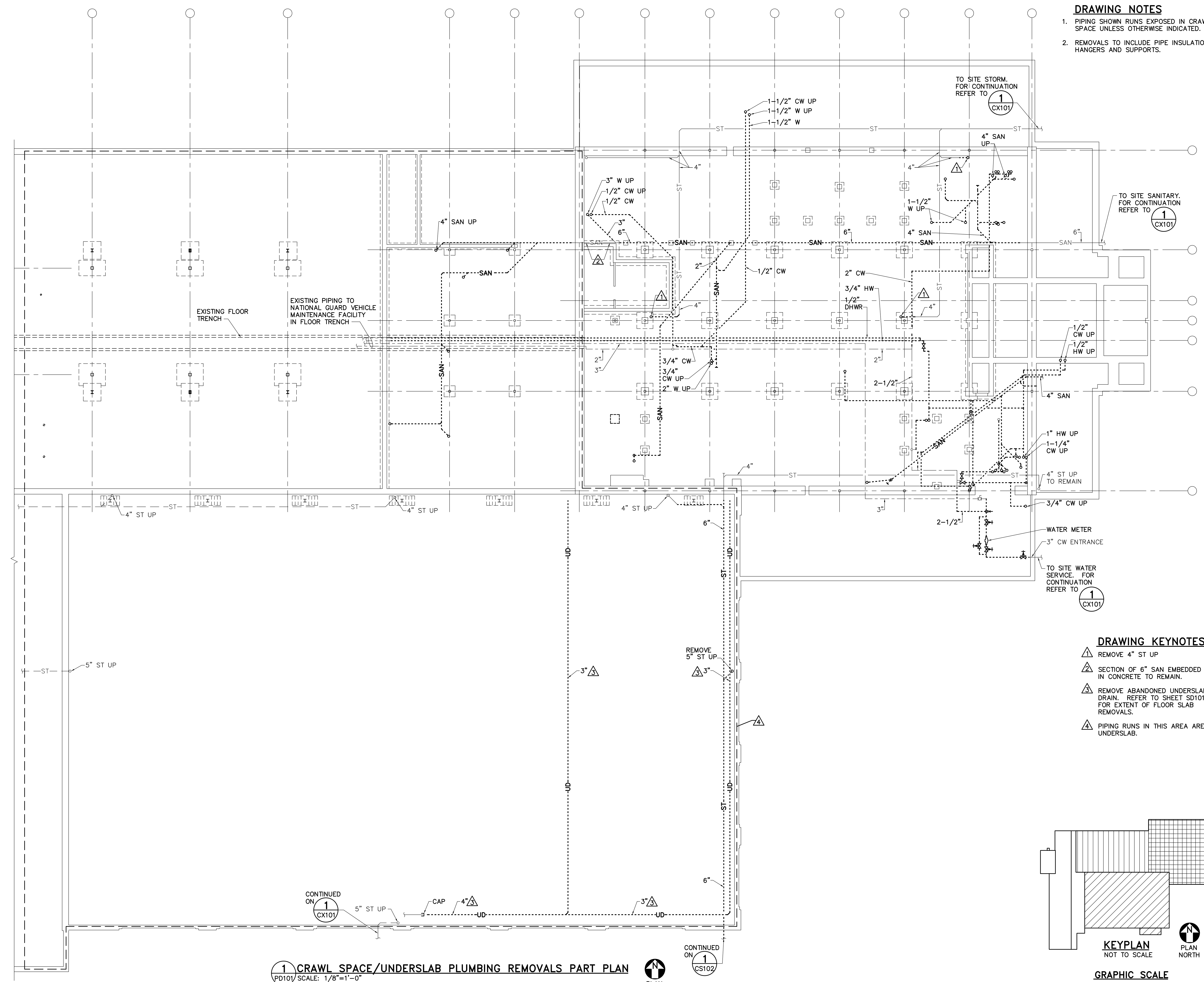
SCALE: AS NOTED  
 DATE: 05-24-16

DWG. **PD101**

SHEET: 112 of 169

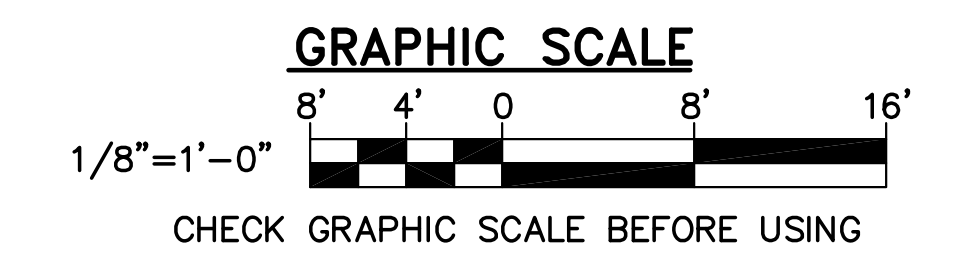
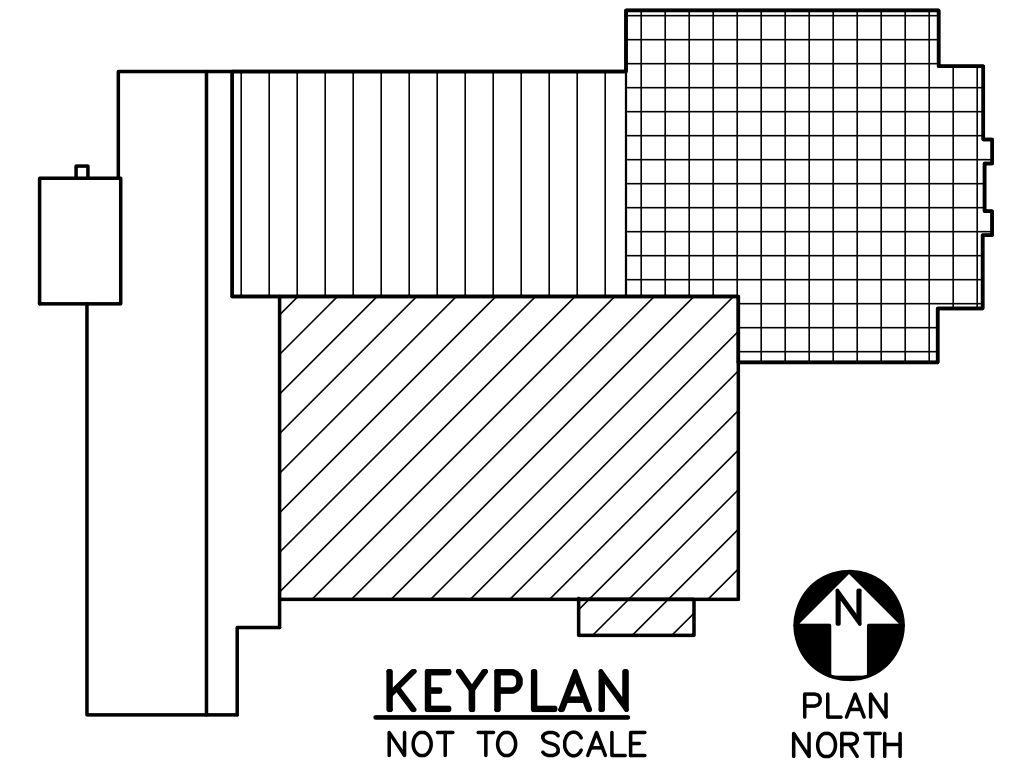
**DRAWING NOTES**

1. PIPING SHOWN RUNS EXPOSED IN CRAWL SPACE UNLESS OTHERWISE INDICATED.
2. REMOVALS TO INCLUDE PIPE INSULATION, HANGERS AND SUPPORTS.



**DRAWING KEYNOTES**

- 1 REMOVE 4" ST UP
- 2 SECTION OF 6" SAN EMBEDDED IN CONCRETE TO REMAIN.
- 3 REMOVE ABANDONED UNDERSLAB DRAIN. REFER TO SHEET SD101 FOR EXTENT OF FLOOR SLAB REMOVALS.
- 4 PIPING RUNS IN THIS AREA ARE UNDERSLAB.



**1 CRAWL SPACE/UNDERSLAB PLUMBING REMOVALS PART PLAN**  
 PD101 SCALE: 1/8"=1'-0"

