

DESIGNED BY: SMC
 DRAWN BY: KLG
 CHECKED BY: MSA
 PROJECT: 21502.10

UNIVERSITY OF NEW ENGLAND
 PORTLAND CAMPUS
 STEVEN AVENUE ARMORY
 716 STEVENS AVE
 PORTLAND, MAINE 04103
 T (207) 283-0171

RENOVATIONS TO THE
 STEVENS AVENUE ARMORY

ENLARGED
 PLUMBING
 PART PLANS

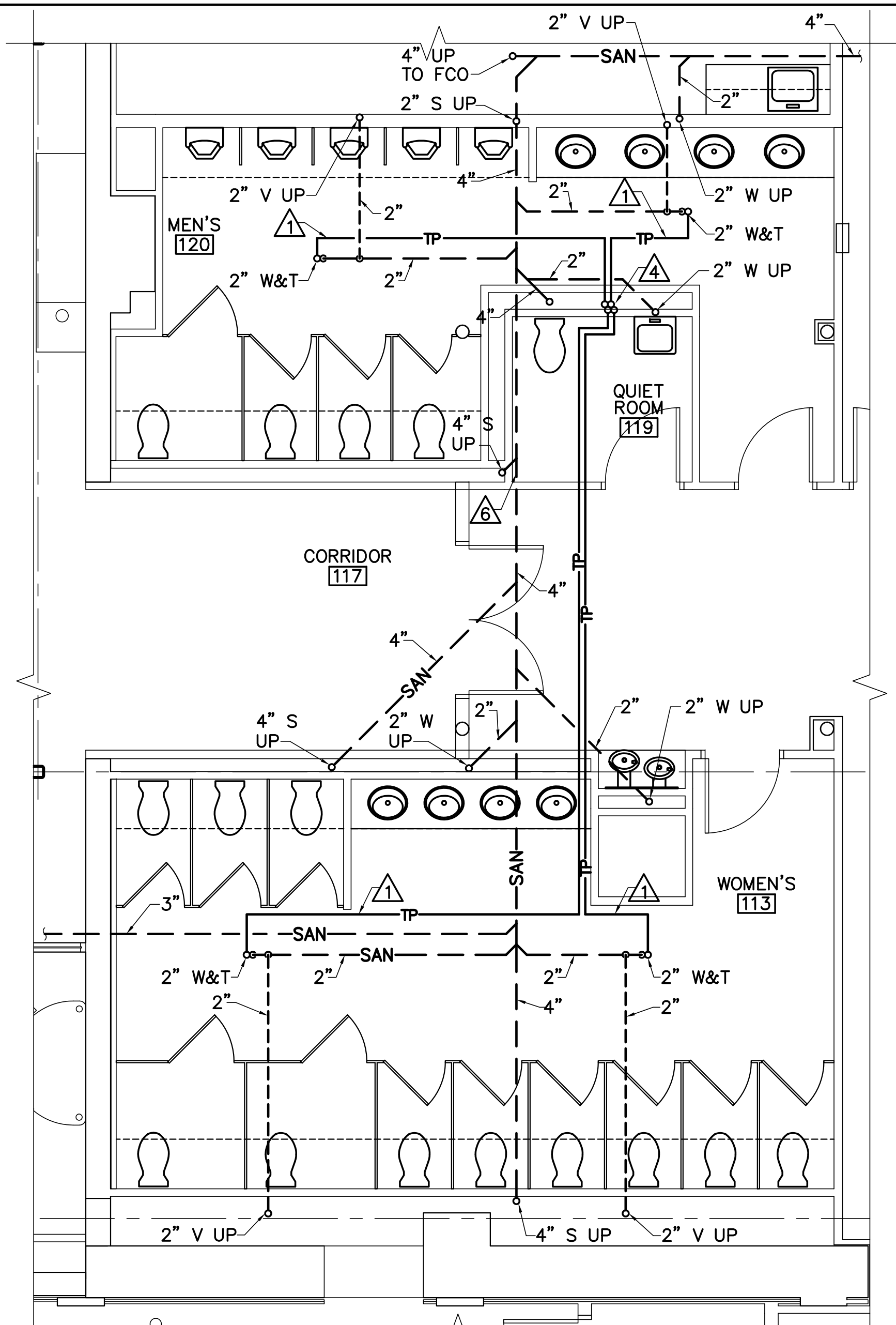
SCALE: AS NOTED
 DATE: 05-24-16

DWG. P-401

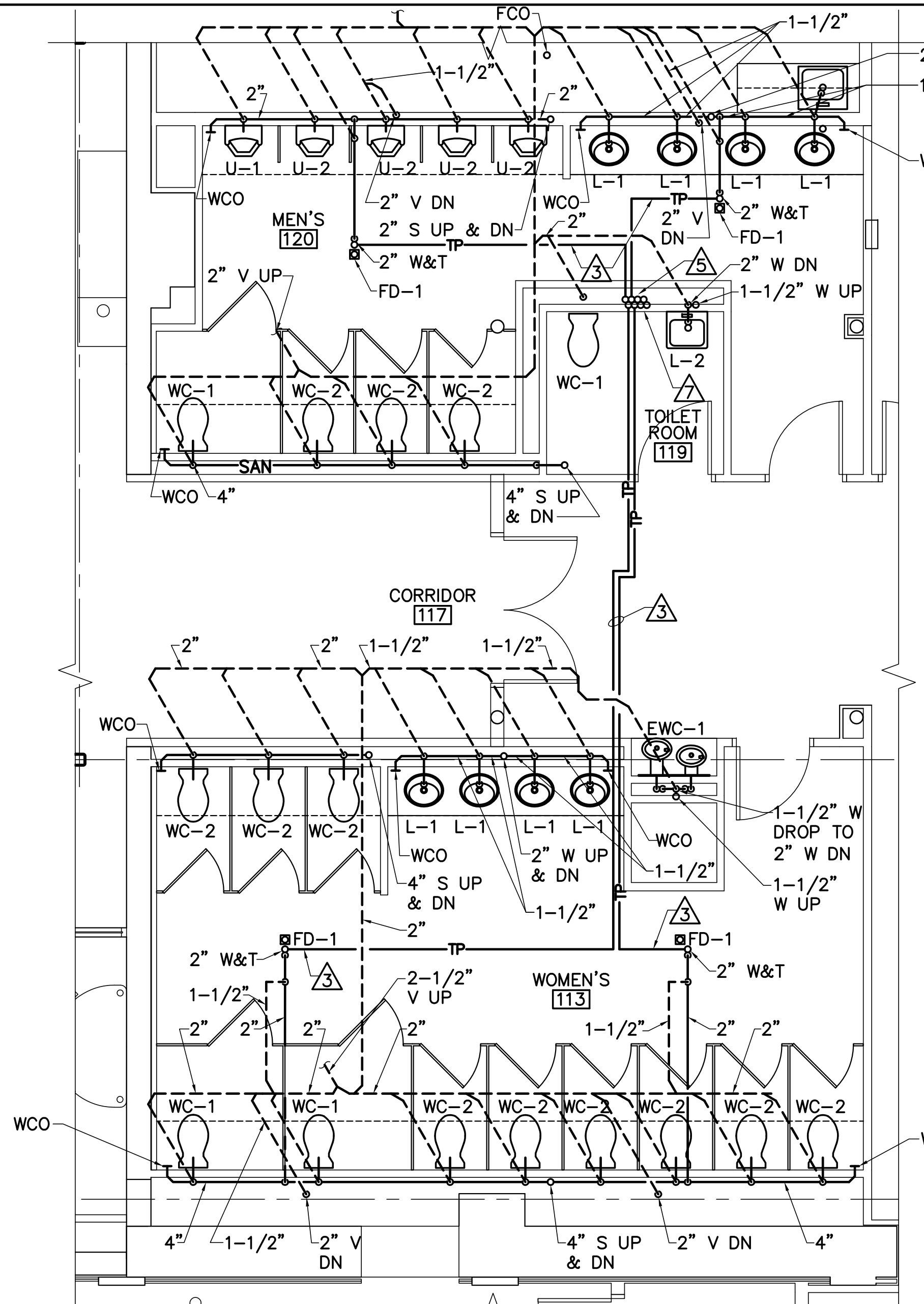
SHEET: 118 of 169

DRAWING KEYNOTES

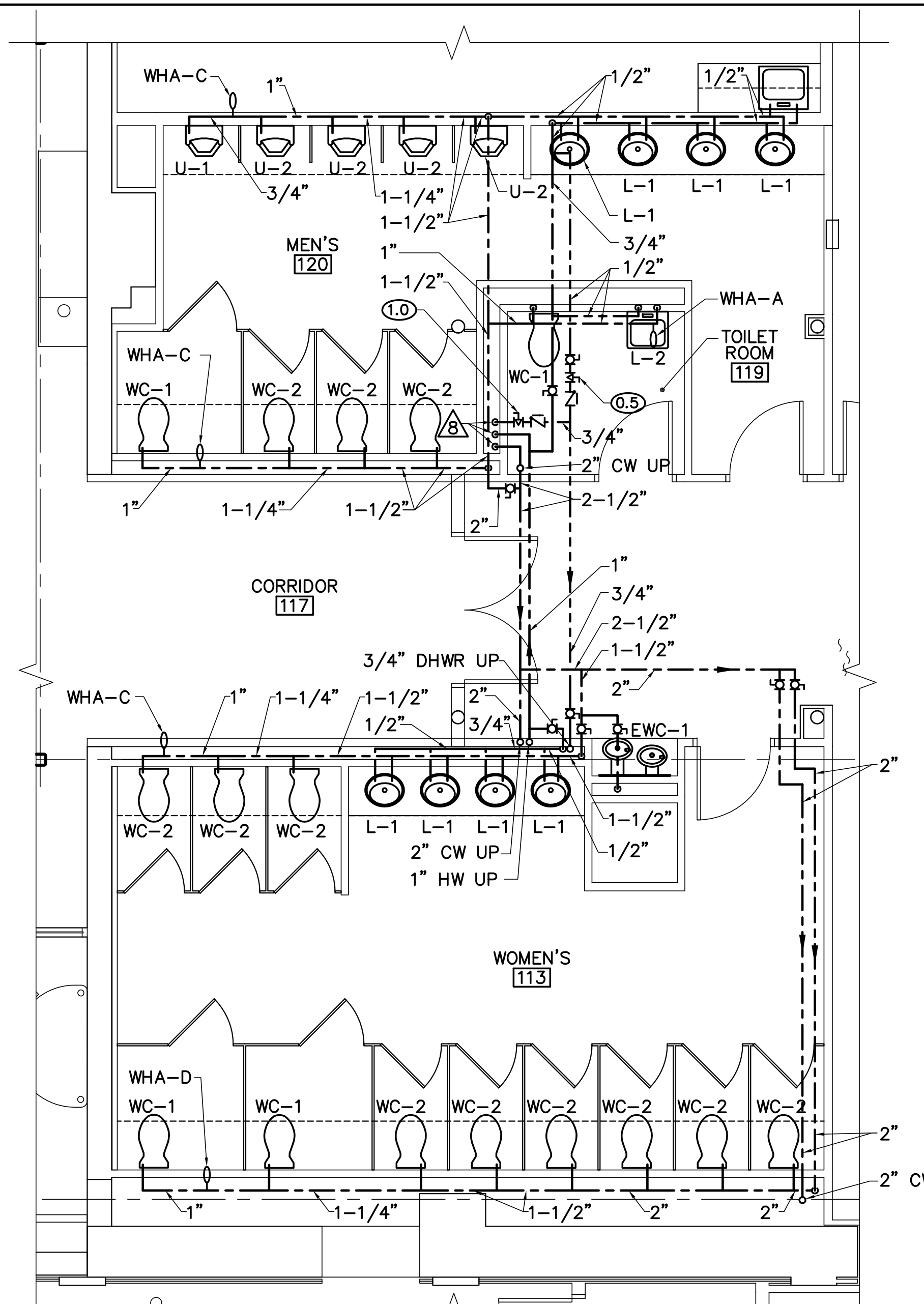
- △ 1/2" CW PEX TUBING BELOW SLAB FROM TRAP PRIMER ASSEMBLY.
- △ PROVIDE FLUSH MOUNT ELECTRONIC TRAP PRIMER ASSEMBLY WITH 10 OUTLET MANIFOLD. PROVIDE EIGHT 1/2" CW COPPER LINES DOWN.
- △ 1/2" COPPER LINE FROM TRAP PRIMER ASSEMBLY.
- △ FOUR 1/2" CW LINES UP TO TRAP PRIMER ASSEMBLY IN QUIET ROOM 215.
- △ EIGHT 1/2" CW LINES DN TO TRAP PRIMER ASSEMBLY IN QUIET ROOM 215.
- △ 4" SAN LINE THROUGH TRENCH BELOW. REFER TO SHEET P-101 FOR TRENCH LOCATION.
- △ FOUR 1/2" CW LINES DOWN. TRANSITION TO PEX AT FLOOR SLAB.
- △ 2-1/2" CW, 1" HW AND 3/4" DHWR DOWN IN CHASE TO FLOOR TRENCH.



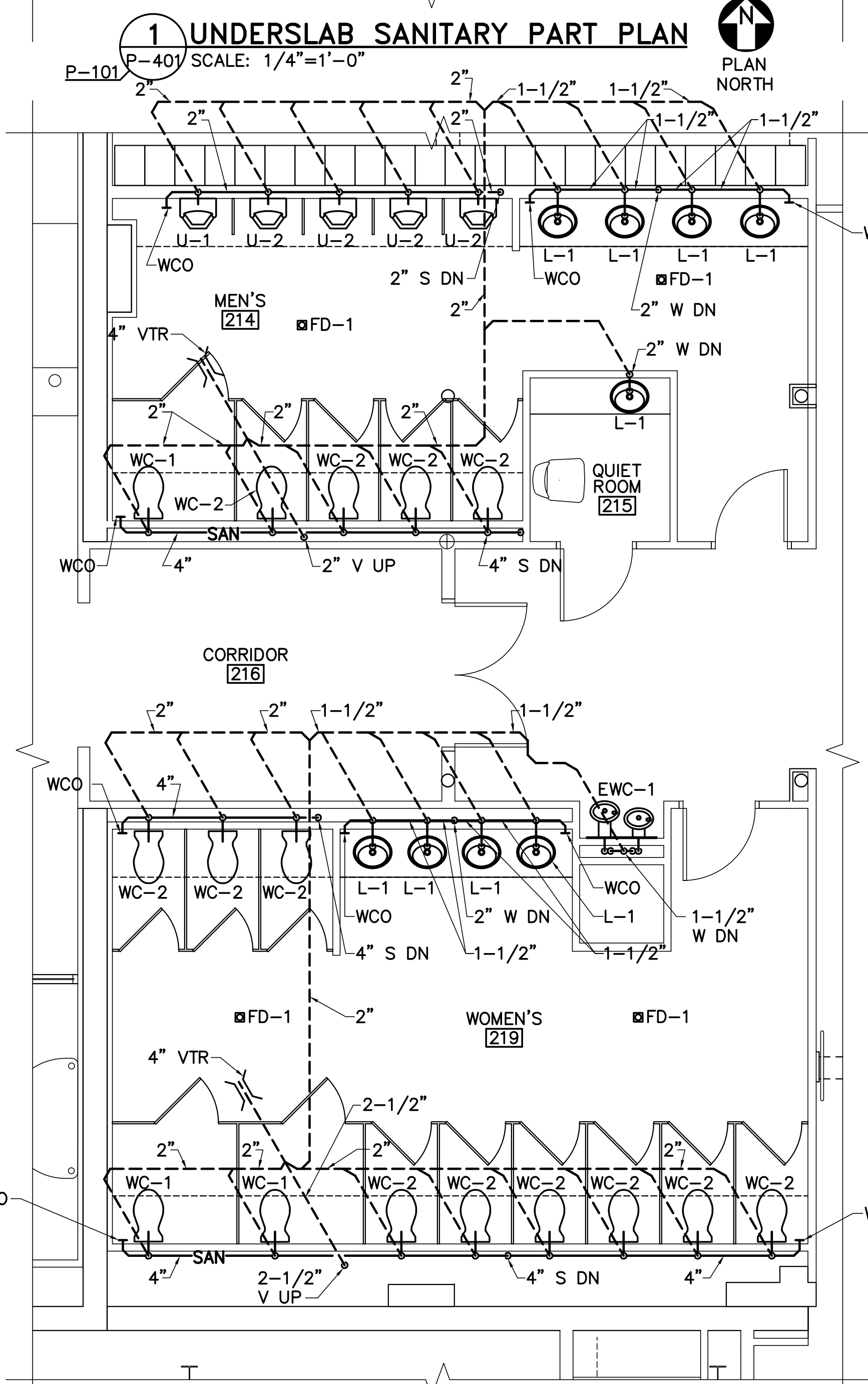
1 UNDERSLAB SANITARY PART PLAN
 P-101 SCALE: 1/4"=1'-0"
 PLAN NORTH



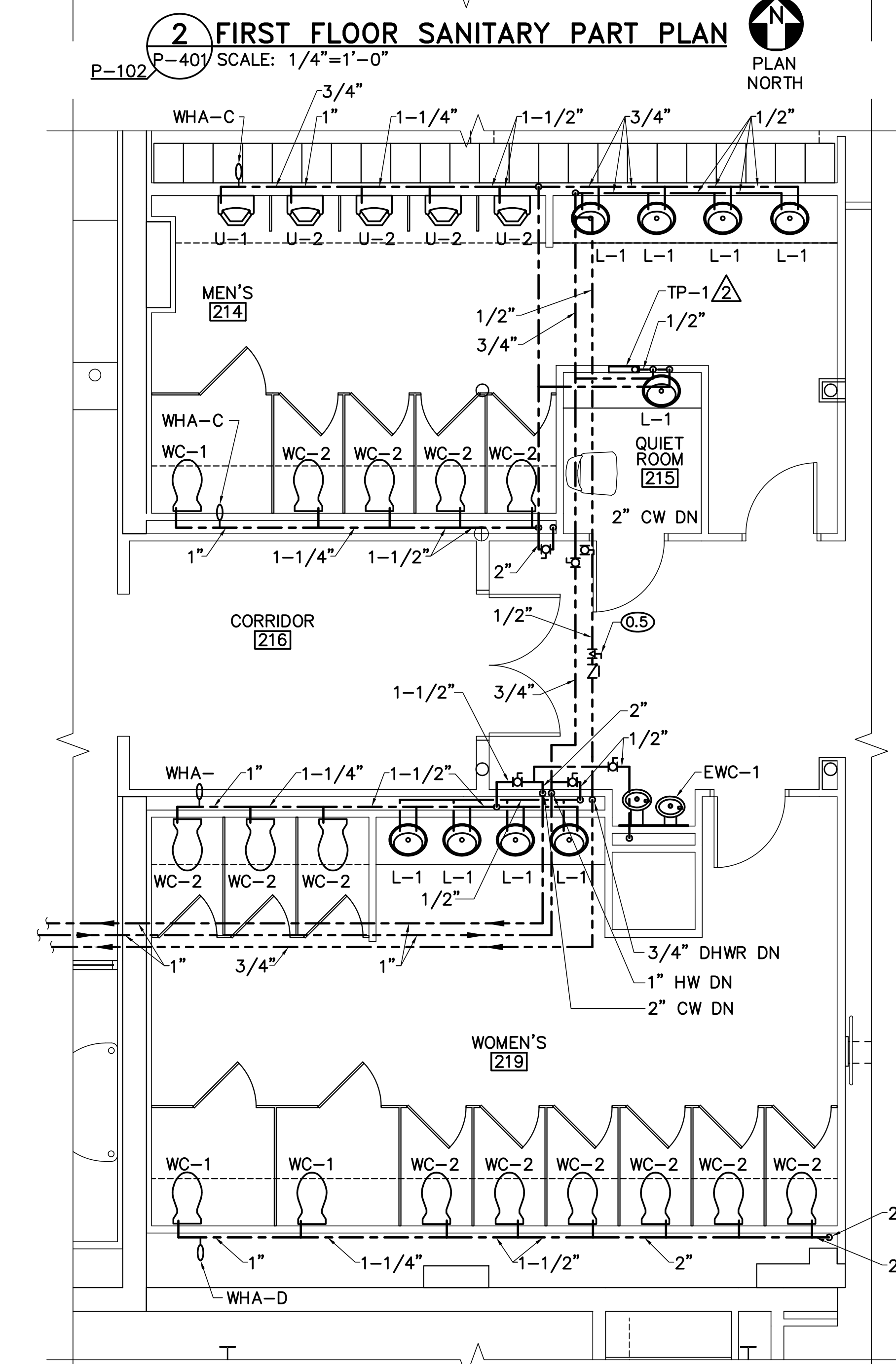
2 FIRST FLOOR SANITARY PART PLAN
 P-102 SCALE: 1/4"=1'-0"
 PLAN NORTH



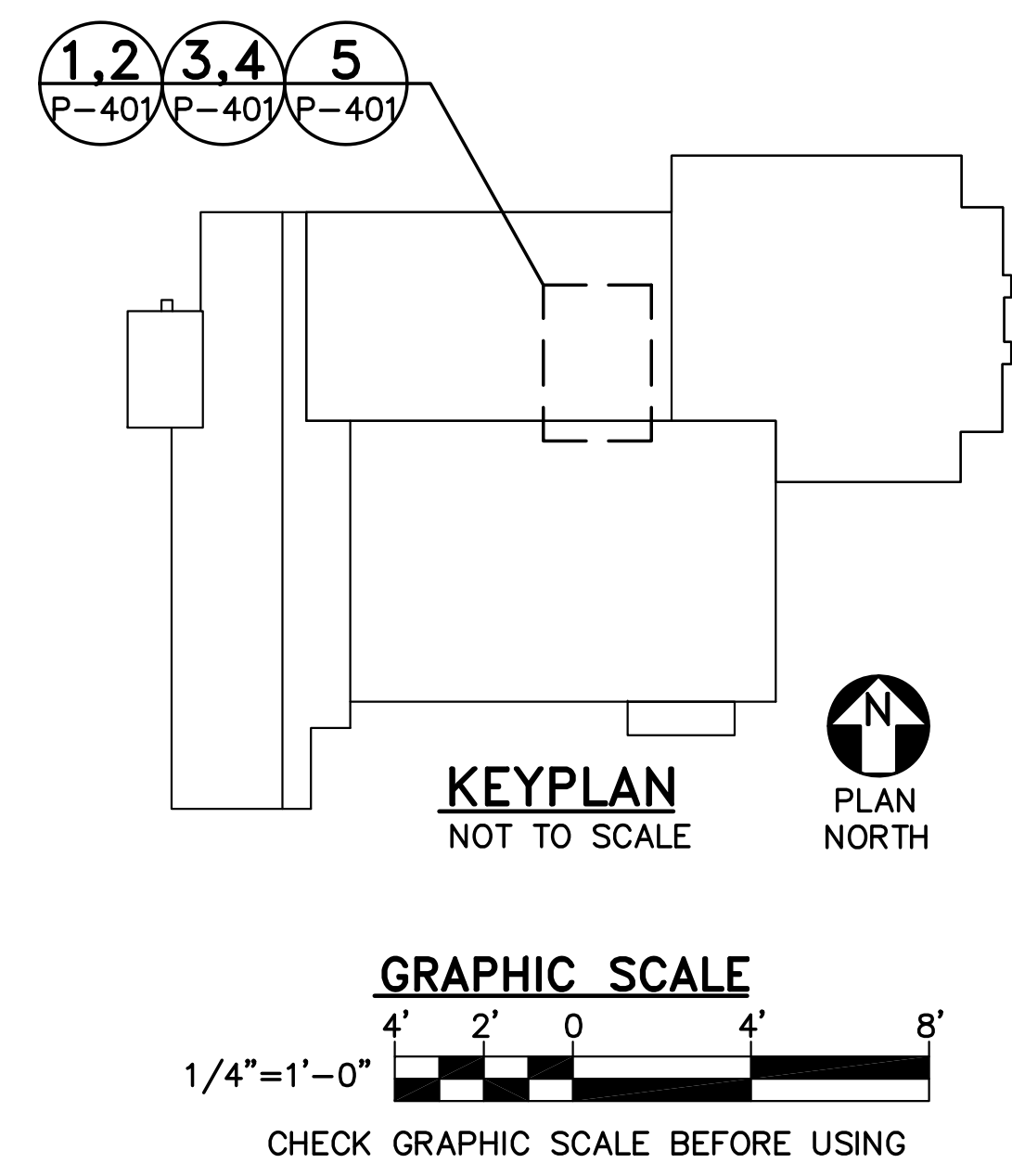
3 FIRST FLOOR DOMESTIC WATER PART PLAN
 P-102 SCALE: 1/4"=1'-0"
 PLAN NORTH



4 SECOND FLOOR SANITARY PART PLAN
 P-401 SCALE: 1/4"=1'-0"
 PLAN NORTH



5 SECOND FLOOR DOMESTIC WATER PART PLAN
 P-103 SCALE: 1/4"=1'-0"
 PLAN NORTH



24 May, 2016 - P-401.dwg
 C:\drive\21502.10-P401.dwg