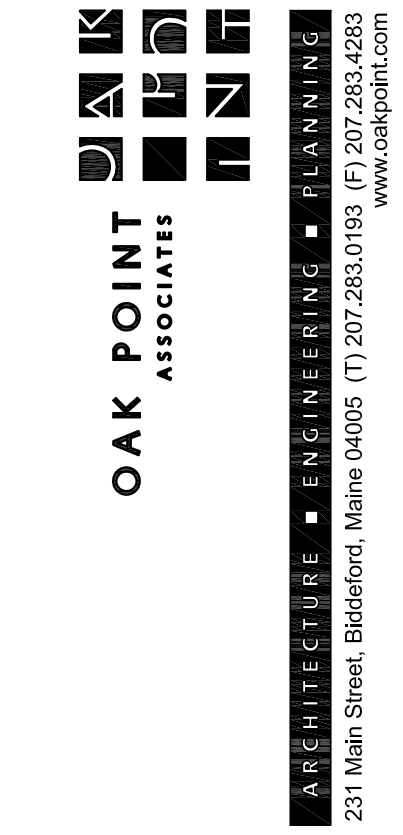


- DRAWING KEYNOTES**
- 1 REFER TO DETAIL 6/P-501 FOR THERMOSTATIC MIXING VALVE
 - 2 4" ST SHALL RUN DOWN TO FIRST FLOOR WITHIN COLUMN ENCLOSURE. COORDINATE WITH ARCHITECTURAL SHEETS.
 - 3 PROVIDE RD-1 IN ROOF ABOVE. REFER TO SHEET AD120 FOR ROOF PLAN.
 - 4 REINSTALL EXISTING KITCHEN SINK. 1/2" CW AND 1/2" HW DN IN WALL. 1-1/2" V RISE AND 1-1/2" W DN IN WALL.
 - 5 1-1/2" V DN IN COLUMN ENCLOSURE.
 - 6 2" V DN IN COLUMN ENCLOSURE.
 - 7 1/2" CW AND 1/2" DN IN WALL. 1-1/2" V RISE TO 4" VTR AND 1-1/2" V DN IN WALL.



DESIGNED BY: SMC
 DRAWN BY: KLG
 CHECKED BY: MSA
 PROJECT: 21502.10

UNIVERSITY OF NEW ENGLAND
 PORTLAND CAMPUS
 STEVEN AVENUE ARMORY
 716 STEVENS AVE
 PORTLAND, MAINE 04103
 T (207) 283-0171

UNIVERSITY OF NEW ENGLAND
 PORTLAND CAMPUS
 STEVEN AVENUE ARMORY
 716 STEVENS AVE
 PORTLAND, MAINE 04103
 T (207) 283-0171

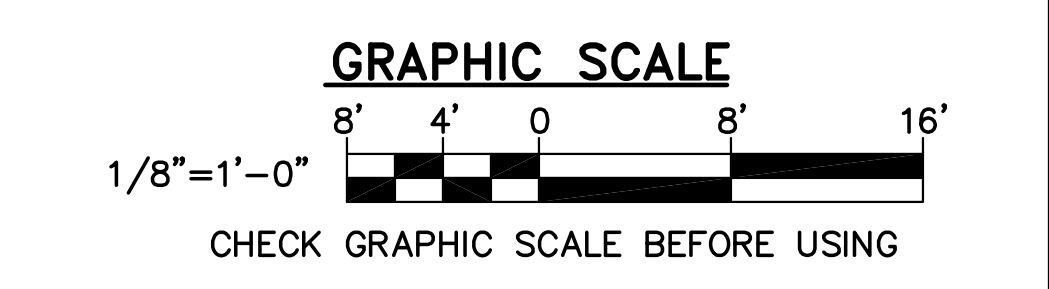
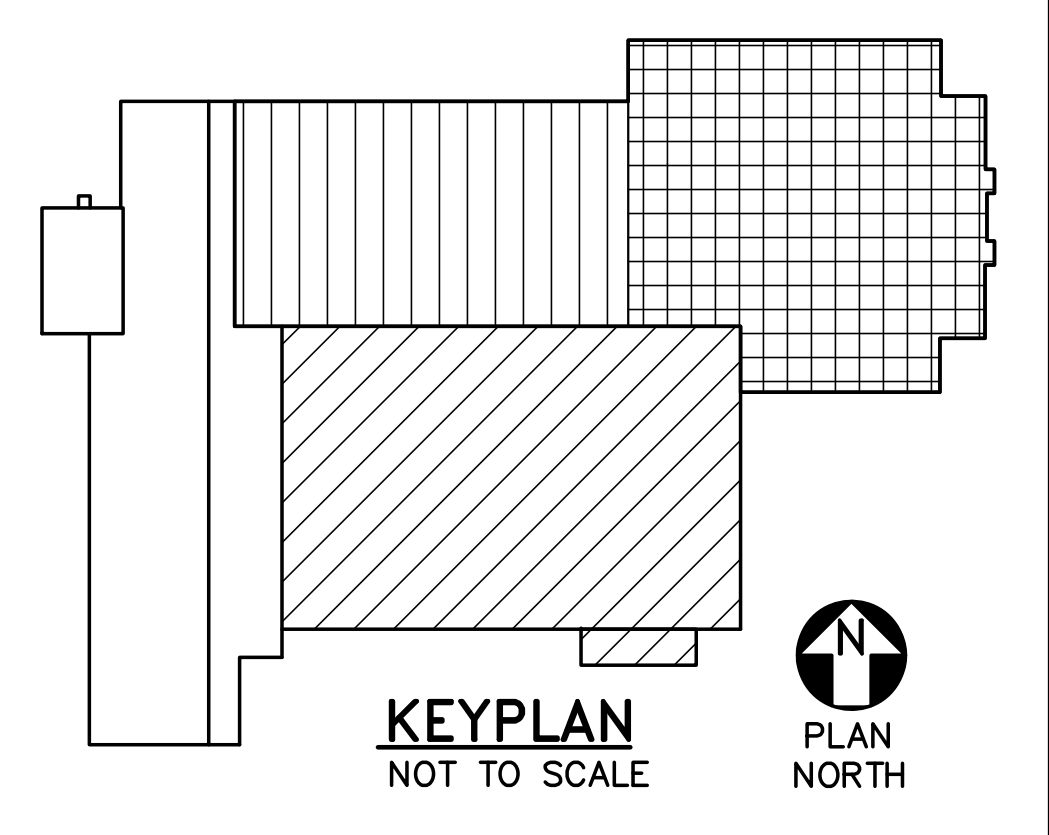
RENOVATIONS TO THE
 STEVENS AVENUE ARMORY

SECOND FLOOR
 PLUMBING
 PART PLAN

SCALE: AS NOTED
 DATE: 05-24-16

DWG. **P-103**

SHEET: 117 OF 169



1 SECOND FLOOR PLUMBING PART PLAN
 P-103 SCALE: 1/8"=1'-0"
 PLAN NORTH

24 May, 2016 - 6:48pm
 C:\file\21502.10-P103.dwg