

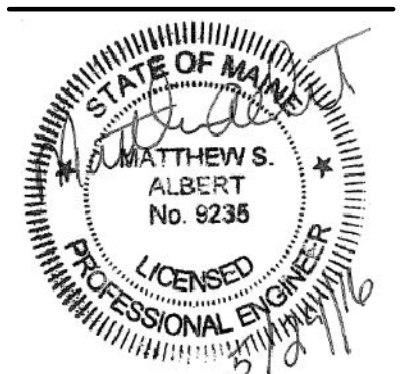
**GENERAL NOTE**

- SEE RISER DIAGRAMS FOR SIZES NOT INDICATED HERE.
- OXYGEN SUPPLY SYSTEM SHALL BE INSTALLED PER NFPA 55 AND LOCAL CODES.

**DRAWING KEYNOTES**

- 1. EXIST 4" ST UP AND DN.
- 2. 4" ST UP AND DN IN CHASE OR CLOSET.
- 3. CLEANOUT AT BASE OF RISER.
- 4. 1/2" CW, 1/2" HW DN IN WALL. 1-1/2" V RISE AND 1-1/2" W DN IN WALL.
- 5. 1/2" CW DROP IN WALL. 1-1/2" V RISE AND 1-1/2" W DN IN WALL.
- 6. 1/2" VAC AND 1/2" CA DROP IN WALL TO HEADWALL UNIT.
- 7. 1/2" VAC, 1/2" CA AND 1/2" O DROP IN WALL TO HEADWALL UNIT.
- 8. THREE 1/2" CW LINES UP TO TRAP PRIMER ASSEMBLY IN MECHANICAL ROOM 205.
- 9. 1-1/2" V UP IN CHASE.
- 10. OXYGEN HIGH PRESSURE 4 CYLINDER MANIFOLD.
- 11. OXYGEN CYLINDERS (4) PROVIDED BY OWNER.
- 12. SUMP PUMP SP-1 CONTROL PANEL.
- 13. 2" V UP IN CHASE.
- 14. 1/2" CW, 1/2" HW UP AND DN IN CHASE. 1-1/2" V RISE AND 2" W DN IN CHASE.

OAK POINT ASSOCIATES  
 231 Main Street, Scarborough, Maine 04105 (172)7263010  
 www.oakpoint.com



DESIGNED BY: SMC  
 DRAWN BY: KLG  
 CHECKED BY: MSA  
 PROJECT: 21502.10

UNIVERSITY OF NEW ENGLAND  
 PORTLAND CAMPUS  
 STEVEN AVENUE ARMORY  
 716 STEVENS AVE  
 PORTLAND, MAINE 04103  
 T (207)283-0171

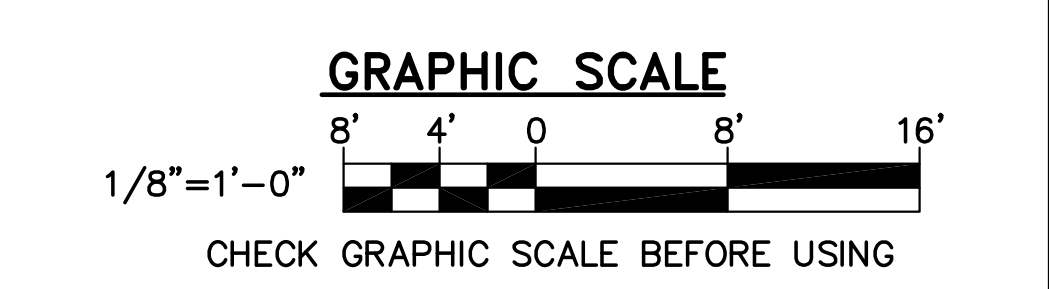
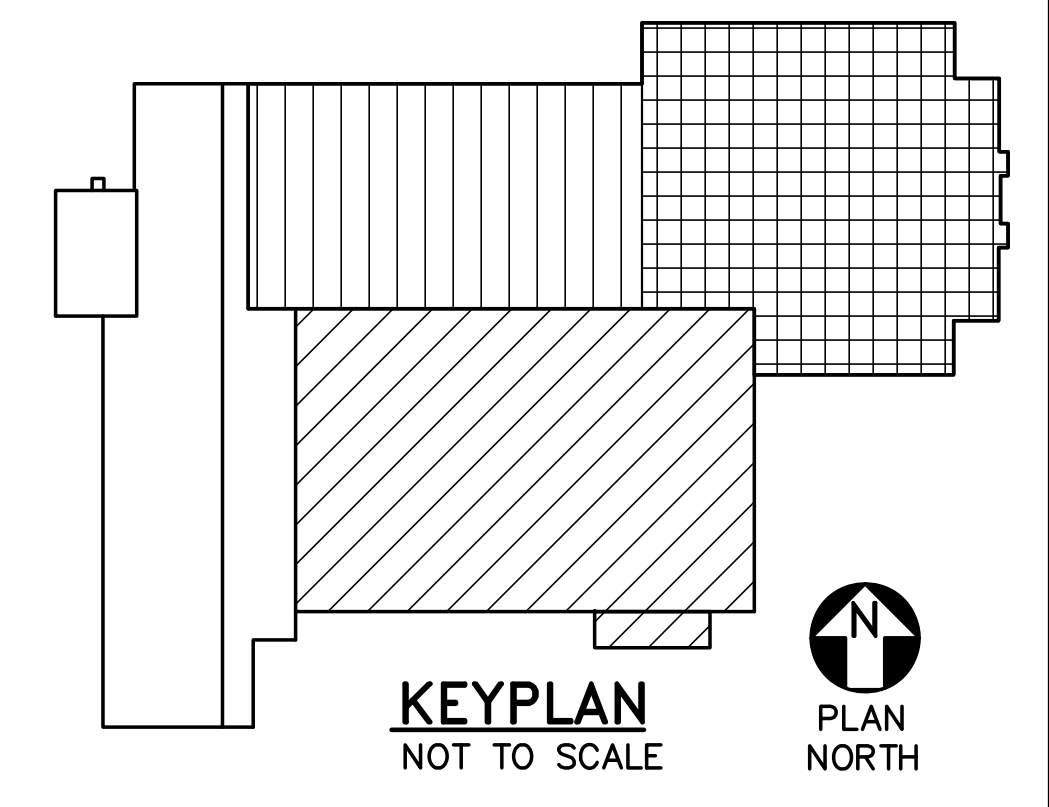
RENOVATIONS TO THE  
 STEVENS AVENUE ARMORY

FIRST FLOOR  
 PLUMBING  
 PART PLAN

SCALE: AS NOTED  
 DATE: 05-24-16

DWG. P-102

SHEET: 116 OF 169



**1 FIRST FLOOR PLUMBING PART PLAN**  
 P-102 SCALE: 1/8"=1'-0"  
 PLAN NORTH