



DESIGNED BY: MSA  
 DRAWN BY: KLG  
 CHECKED BY: MSA  
 PROJECT: 21502.10

UNIVERSITY OF NEW ENGLAND  
 PORTLAND CAMPUS  
 STEVEN AVENUE ARMORY  
 716 STEVENS AVE  
 PORTLAND, MAINE 04103  
 T (207)283-0171

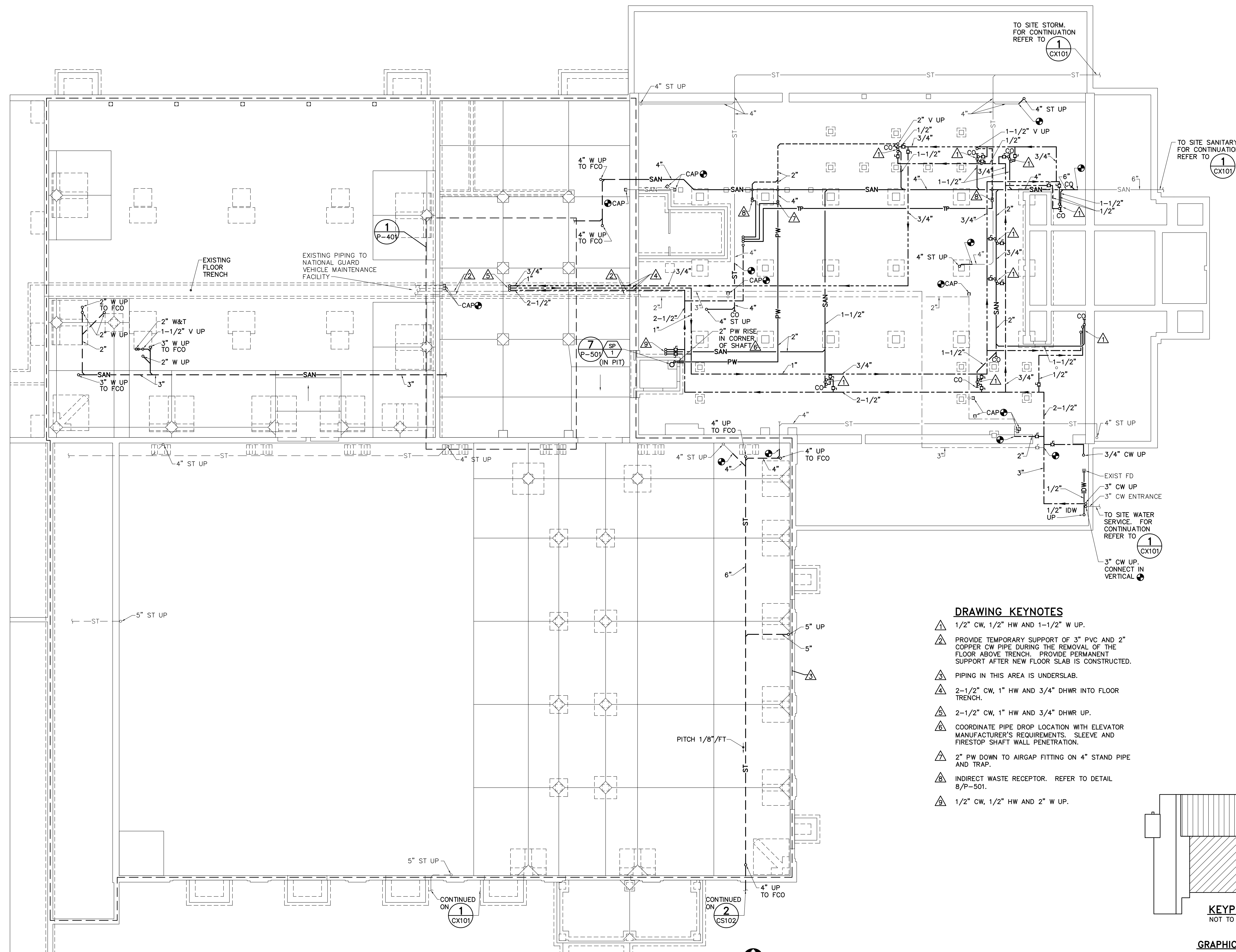
RENOVATIONS TO THE  
 STEVENS AVENUE ARMORY

CRAWL SPACE/  
 UNDERSLAB  
 PLUMBING  
 PART PLAN

SCALE: AS NOTED  
 DATE: 05-24-16

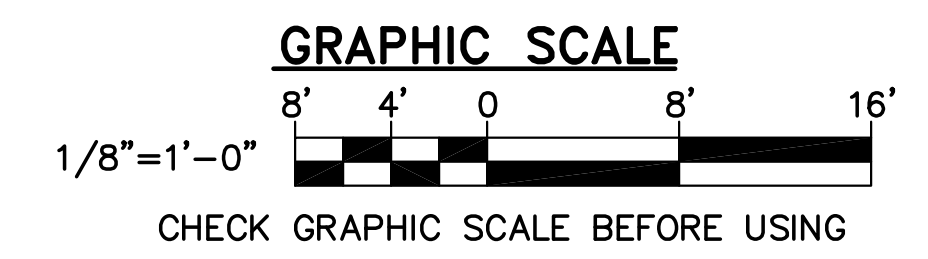
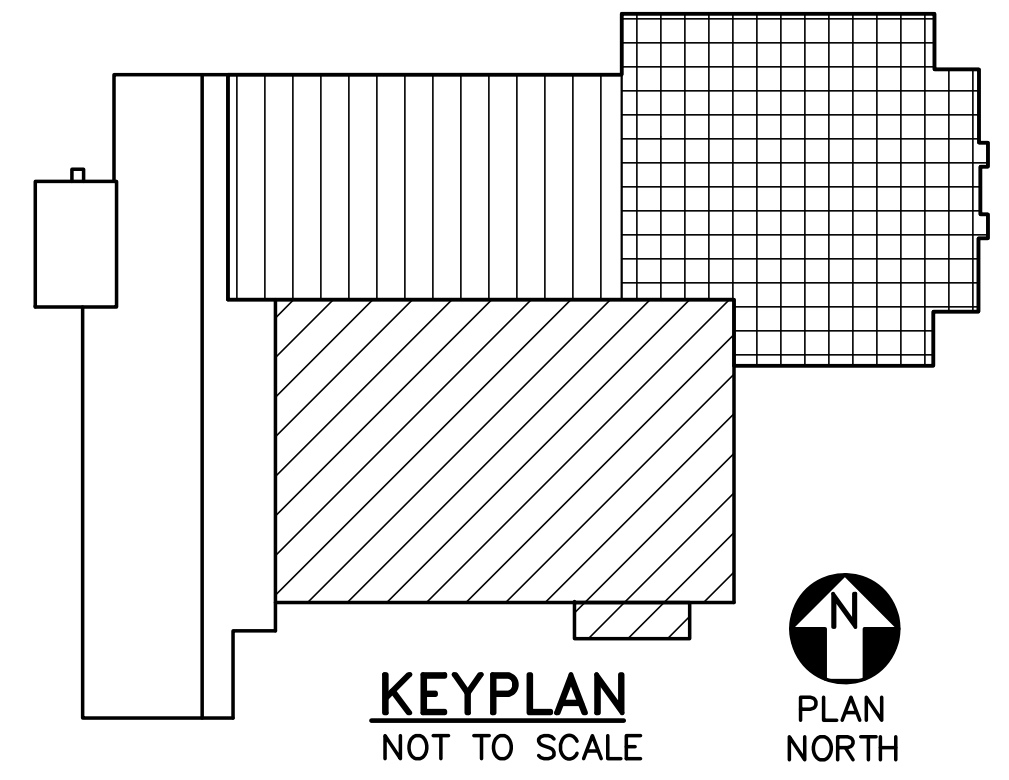
DWG. P-101

SHEET: 115 OF 169



**DRAWING KEYNOTES**

- ▲ 1/2" CW, 1/2" HW AND 1-1/2" W UP.
- ▲ PROVIDE TEMPORARY SUPPORT OF 3" PVC AND 2" COPPER CW PIPE DURING THE REMOVAL OF THE FLOOR ABOVE TRENCH. PROVIDE PERMANENT SUPPORT AFTER NEW FLOOR SLAB IS CONSTRUCTED.
- ▲ PIPING IN THIS AREA IS UNDERSLAB.
- ▲ 2-1/2" CW, 1" HW AND 3/4" DHWR INTO FLOOR TRENCH.
- ▲ 2-1/2" CW, 1" HW AND 3/4" DHWR UP.
- ▲ COORDINATE PIPE DROP LOCATION WITH ELEVATOR MANUFACTURER'S REQUIREMENTS. SLEEVE AND FIRESTOP SHAFT WALL PENETRATION.
- ▲ 2" PW DOWN TO AIRGAP FITTING ON 4" STAND PIPE AND TRAP.
- ▲ INDIRECT WASTE RECEPTOR. REFER TO DETAIL 8/P-501.
- ▲ 1/2" CW, 1/2" HW AND 2" W UP.



**1 CRAWL SPACE/UNDERSLAB PLUMBING PART PLAN**  
 P-101 SCALE: 1/8"=1'-0"