

1-1/4" CWS & CWR AND  
3/4" HWS & HWR RISE  
INTO PIPING VESTIBULE  
FOR COIL PIPING DETAIL  
REFER TO  
6.7  
M-502

1-1/2" CWS & CWR AND  
1" HWS & HWR RISE  
INTO PIPING VESTIBULE  
FOR COIL PIPING DETAIL  
REFER TO  
6.7  
M-502

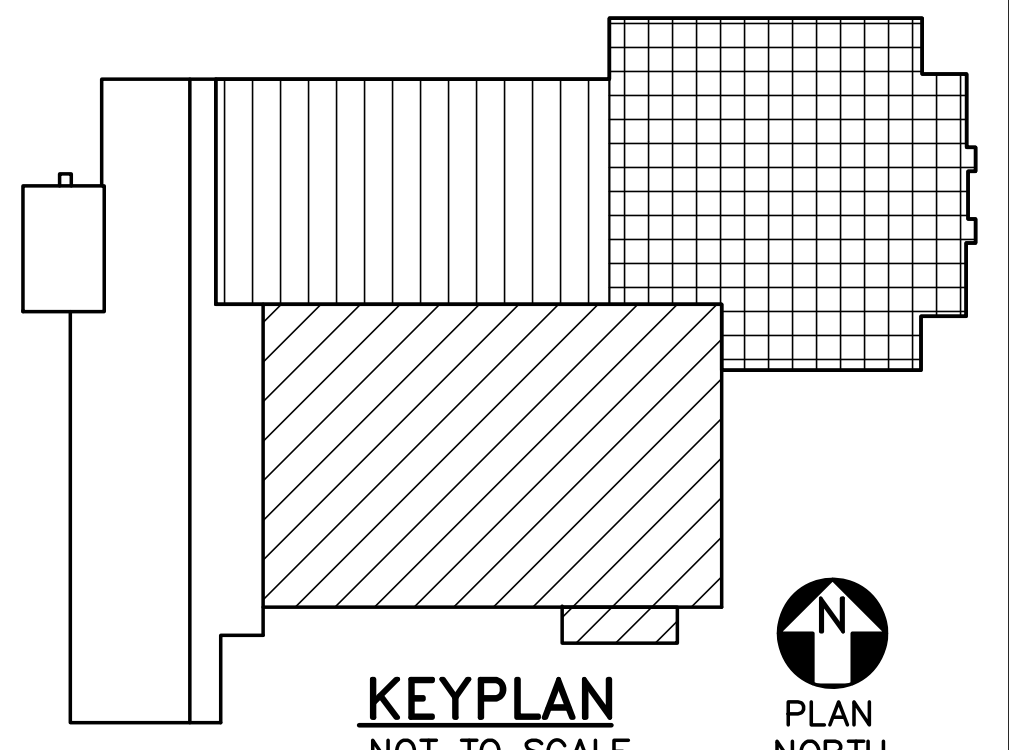
**DRAWING KEYNOTES**

- △ REFER TO DETAIL 12/AE502 FOR PIPE PENETRATION DETAIL.
- △ REFER TO 13/AE502 FOR PIPE SUPPORT DETAIL.
- △ OUTDOOR UNITS SHALL BE LOCATED AT LEAST 12'-0" FROM THE EDGE OF THE ROOF.
- △ CONDENSATE TRAP **2**  
M-502

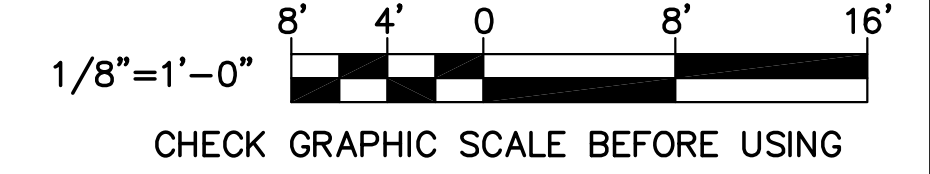
**DRAWING NOTE**

1. REFRIGERENT LIQUID AND SUCTION PIPING SHOWN FOR GENERAL ROUTING. FOR SIZES SEE 16/M-502.

**1 ROOF MECHANICAL PIPING PART PLAN**  
MP104 SCALE: 1/8"=1'-0"



**GRAPHIC SCALE**



DESIGNED BY: RNC  
DRAWN BY: SMC  
CHECKED BY: MSA  
PROJECT: 21502.10

**UNIVERSITY OF NEW ENGLAND  
PORTLAND CAMPUS**  
STEVEN AVENUE ARMORY  
716 STEVENS AVE  
PORTLAND, MAINE 04103  
T (207)283-0171

**RENOVATIONS TO THE  
STEVEN AVENUE ARMORY**

**ROOF  
MECHANICAL  
PIPING  
PART PLAN**

SCALE: AS NOTED  
DATE: 05-24-16

DWG. **MP104**

SHEET: 133 OF 169