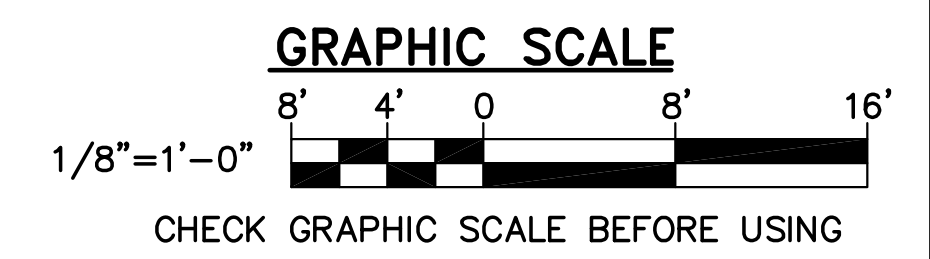
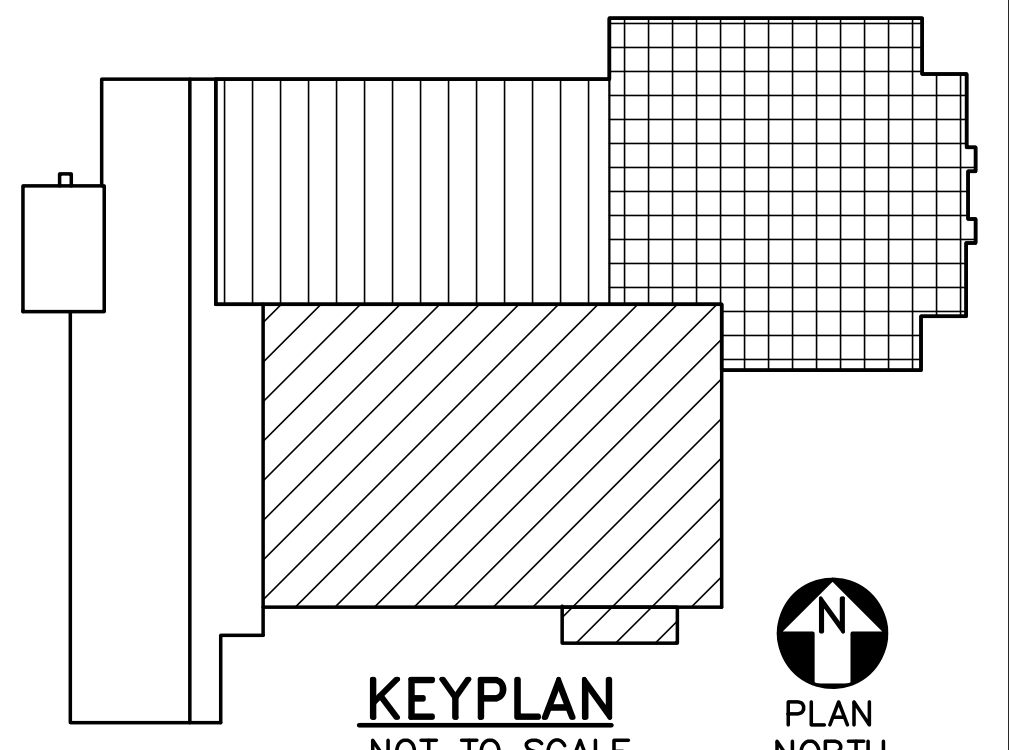


DRAWING KEYNOTES

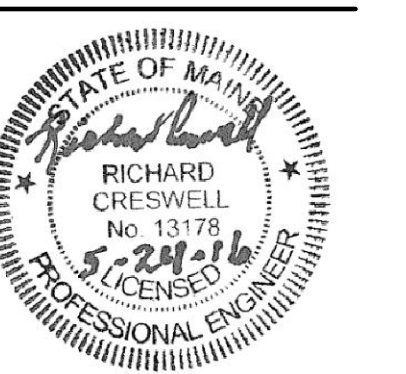
- △ DUCT PENETRATION OF HIGH WALL INTO FUNCTION SPACE . REFER TO SHEET MH102 FOR CONTINUATION.
- △ REFER TO PART PLAN 1/M-401 FOR CONTINUATION.
- △ PROVIDE PRE-MANUFACTURED ROOFTOP DUCT SUPPORT ASSEMBLY AT MAXIMUM 10'-0" ON CENTER, WITHIN 2'-0" OF EACH ELBOW AND WITHIN 4'-0" OF EACH BRANCH INTERSECTION. REFER TO DETAIL 11/M-501.
- △ SECURE DUCTWORK TO FRAME IN LIEU OF ROOF.
- △ PROVIDE CONCENTRIC VENT DUCTING FOR DIRECT VENT GAS FIREPLACE APPLIANCES SIZED AND INSTALLED IN ACCORDANCE WITH FIREPLACE APPLIANCE MANUFACTURER'S WRITTEN INSTALLATION INSTRUCTIONS, NFPA 54- "NATIONAL FUEL GAS CODE", STATE AND LOCAL CODES.
- △ FOR THIS SHEET (MH103) REFER TO ELECTRICAL DRAWINGS FOR DETAILS ON PROVIDING DUCT SMOKE DETECTOR.
- △ REFER TO DWG DETAIL 16/AE501 FOR DUCT ROOF PENETRATION DETAILS.

DRAWING NOTES

1. REFER TO SHEET MP104 FOR ROOFTOP PIPING AND ADDITIONAL HVAC EQUIPMENT ON ROOF.
2. REFER TO SHEET SF103 FOR INFORMATION ON EQUIPMENT STRUCTURAL SUPPORTS.



1 ROOF MECHANICAL PART PLAN
 MH102 SCALE: 1/8"=1'-0"
 PLAN NORTH



DESIGNED BY: RNC
 DRAWN BY: KLG
 CHECKED BY: MSA
 PROJECT: 21502.10

UNIVERSITY OF NEW ENGLAND
 PORTLAND CAMPUS
 STEVEN AVENUE ARMORY
 716 STEVENS AVE
 PORTLAND, MAINE 04103
 T (207) 263-0171

RENOVATIONS TO THE
 STEVENS AVENUE ARMORY

ROOF
 MECHANICAL
 PART PLAN

SCALE: AS NOTED
 DATE: 05-24-16

DWG. **MH103**

SHEET: 129 OF 169