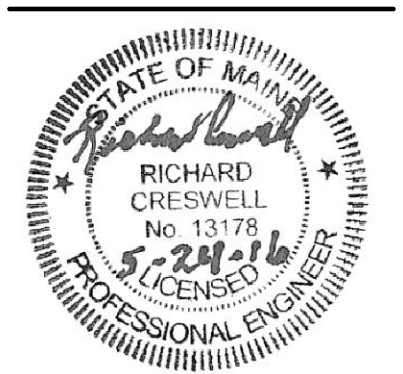


- ### DRAWING KEYNOTES
- 1 REFER TO SHEET MH103 FOR CONTINUATION.
 - 2 PROVIDE ACCESS TO FIRE DAMPER VIA FIRST FLOOR CEILING.
 - 3 PROVIDE OFFSET IN VERTICAL AS NECESSARY TO PERMIT DUCTWORK TO PENETRATE SECOND FLOOR BETWEEN EXISTING FLOOR JOISTS. OFFSET MUST ALSO PERMIT INSTALLATION OF WATER COOLER REFRIGERATION UNIT.
 - 4 PROVIDE OFFSET AS NECESSARY TO PERMIT DUCTWORK TO PENETRATE ROOF BETWEEN EXISTING ROOF JOISTS.
 - 5 FOR LARGE FUNCTION ROOM, POSITION DUCT MOUNTED SUPPLY DIFFUSER OUTLET 45 DEGREES DOWN FROM THE HORIZONTAL. REFER TO DETAIL 12/M-501.
 - 6 FOR CLASSROOM 201, POSITION DUCT MOUNTED SUPPLY DIFFUSERS OUTLET 25 DEGREES DOWN FROM HORIZONTAL. REFER TO DETAIL 12/M-501.
 - 7 POSITION DUCT MOUNTED SUPPLY DIFFUSER OUTLET 30 DEGREES DOWN FROM HORIZONTAL. REFER TO DETAIL 12/M-501.
 - 8 POSITION DUCT MOUNTED SUPPLY DIFFUSER OUTLET 0 DEGREES DOWN FROM HORIZONTAL. REFER TO DETAIL 12/M-501.
 - 9 PROVIDE OFFSET AS NECESSARY TO ALIGN 200 RA DOWN WITH LOCATION SHOWN ON MH101.
 - 10 PROVIDE CEILING ACCESS DOORS TO MANUAL VOLUME DAMPERS.
 - 11 PROVIDE INSULATED ROUND FLEX DUCT CONNECTION TO DIFFUSER.
 - 12 PROVIDE 3-HOUR RATED FIRE DAMPER.
 - 13 PROVIDE DUCT INSULATION ON EXPOSED DUCTWORK IN THIS AREA.
 - 14 PROVIDE DUCT INSULATION ON EXPOSED OA DUCTWORK. INSULATION SURFACE SHALL BE A MATERIAL THAT IS SUITABLE FOR PRINTING IN THE FIELD.
 - 15 PROVIDE CONCENTRIC VENT DUCTWORK FROM GAS FIREPLACE APPLIANCES ON UP THROUGH THE ROOF, IN ACCORDANCE WITH FIREPLACE APPLIANCE MANUFACTURER'S WRITTEN INSTALLATION INSTRUCTIONS, NFPA 54 "NATIONAL FUEL GAS CODE", STATE CODES AND LOCAL CODES.
 - 16 RETURN GRILLES TO BE SURFACE MOUNTED TO THE BOTTOM OF THE SOFFIT.
 - 17 CONTROL WIRING TO DESTRATIFICATION FANS SPEED CONTROL BOX. LOCATION OF CONTROL BOX TO BE COORDINATED WITH OWNER'S REPRESENTATIVE.

OAK POINT ASSOCIATES
 231 Main Street, Scarborough, Maine 04075
 TEL: 603.883.1111
 WWW.OAKPOINT.COM



DESIGNED BY: RNC
 DRAWN BY: KLG
 CHECKED BY: MSA
 PROJECT: 21502.10

UNIVERSITY OF NEW ENGLAND
 PORTLAND CAMPUS
 STEVEN AVENUE ARMORY
 716 STEVEN AVENUE
 PORTLAND, MAINE 04103
 T (207)283-0171

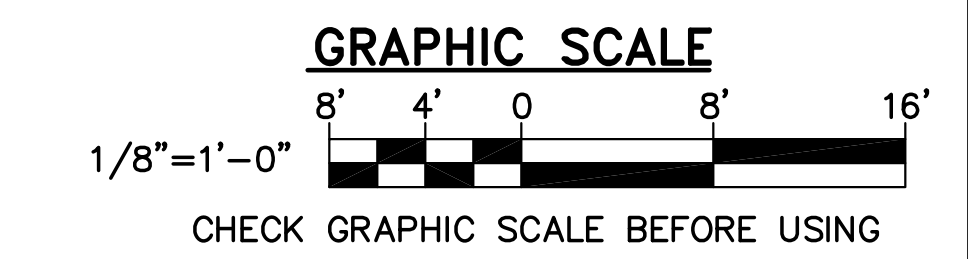
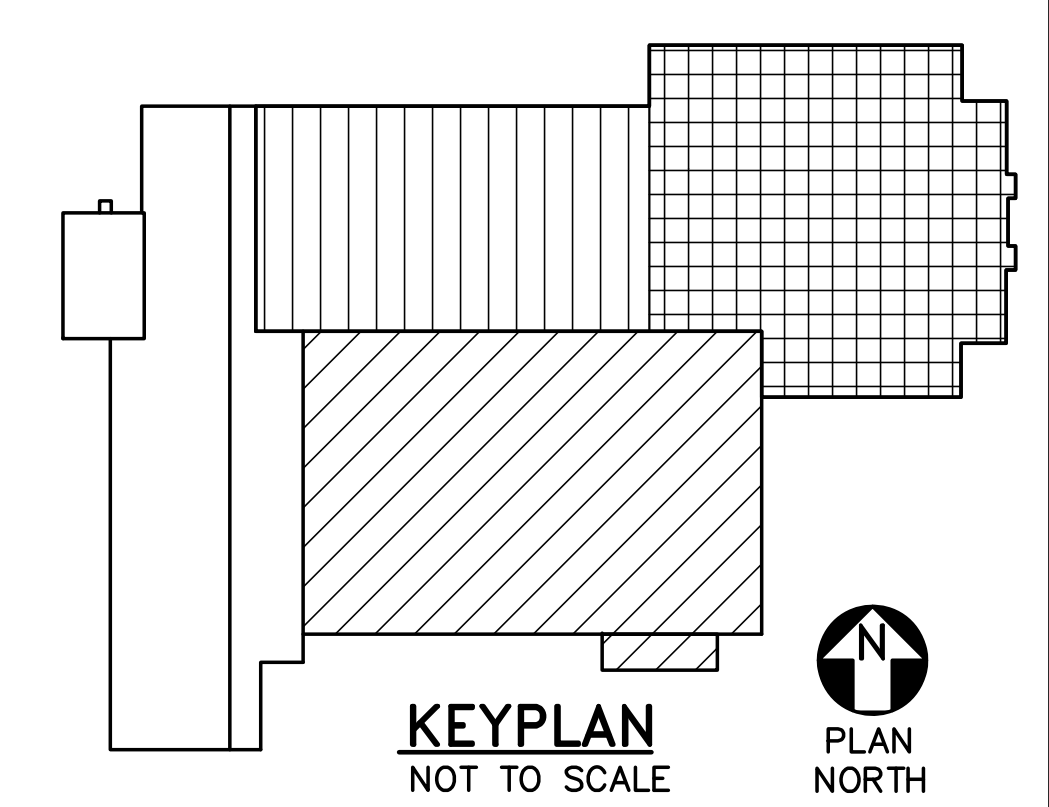
RENOVATIONS TO THE
 STEVEN AVENUE ARMORY

SECOND FLOOR
 MECHANICAL
 DUCTWORK
 PART PLAN

SCALE: AS NOTED
 DATE: 05-24-16

DWG. MH102

SHEET: 128 of 169



1 SECOND FLOOR MECHANICAL DUCTWORK PART PLAN
 MH102 SCALE: 1/8"=1'-0"