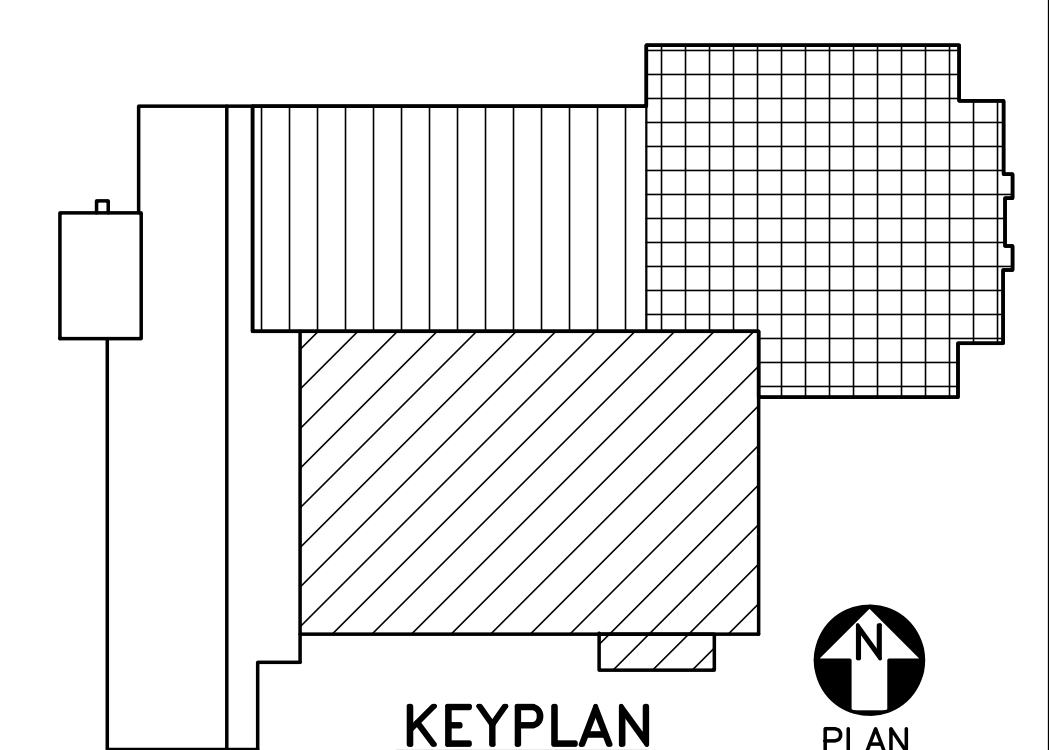


DRAWING KEYNOTES

- △ PROVIDE TURNING VANES.
- △ 10x6 TRANSFER DUCT.
- △ 6x6 TRANSFER DUCT.
- △ REFER TO STRUCTURAL DRAWINGS FOR LOCATION OF OPENING THROUGH SIDE WALL OF BEAM TO PERMIT PASSAGE OF DUCTWORK.
- △ PROVIDE 12x12 CEILING ACCESS DOOR TO MANUAL DAMPER CONTROLLER.
- △ PROVIDE ACCESS DOOR ON DUCT TO ACCESS FIRE DAMPER LINKAGE AT SECOND FLOOR.
- △ PROVIDE TURNING VANES IN ELBOW.
- △ PROVIDE 10x3 EXHAUST DUCT DOWN IN WALL TO AN 8x4 WALL MOUNTED EXHAUST GRILLE (E-4 W/O DAMPER) POSITIONED LESS THAN 12 INCHES ABOVE FLOOR LEVEL.
- △ PROVIDE CONCENTRIC VENT DUCTWORK FROM GAS FIREPLACE APPLIANCES ON UP THROUGH ROOF IN ACCORDANCE WITH FIREPLACE MANUFACTURER'S WRITTEN INSTALLATION INSTRUCTIONS, NFPA 54 "NATIONAL FUEL GAS CODE", STATE CODES AND LOCAL CODES.
- △ COORDINATE LOCATION OF DESTRATIFICATION FAN SPEED CONTROL BOX WITH OWNER'S REPRESENTATIVE.

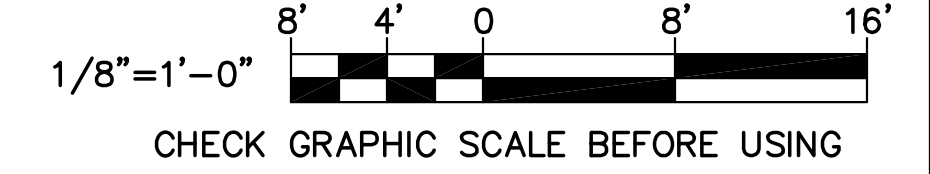
CONSTANT AIRFLOW REGULATOR SCHEDULE

TAG	DUCT SIZE INCHES	AIRFLOW CFM
CAR-A	4	25
CAR-B	4	35

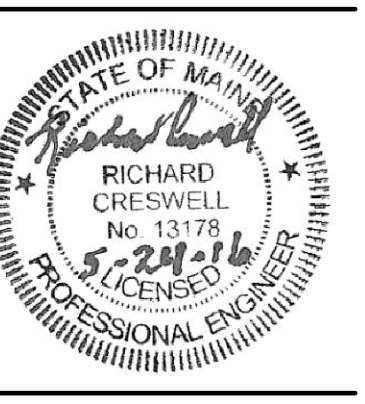


KEYPLAN
NOT TO SCALE
PLAN NORTH

GRAPHIC SCALE



1 FIRST FLOOR MECHANICAL DUCTWORK PART PLAN
MH101 SCALE: 1/8"=1'-0"



DESIGNED BY: RNC
DRAWN BY: KLG
CHECKED BY: MSA
PROJECT: 21502.10

**UNIVERSITY OF NEW ENGLAND
PORTLAND CAMPUS**
STEVENS AVENUE ARMORY
716 STEVENS AVE
PORTLAND, MAINE 04103
T (207)283-0171

**RENOVATIONS TO THE
STEVENS AVENUE ARMORY**

**FIRST FLOOR
MECHANICAL
DUCTWORK
PART PLAN**

SCALE: AS NOTED
DATE: 05-24-16

DWG. **MH101**

SHEET: 127 of 169