



DESIGNED BY: RNC
 DRAWN BY: KLG
 CHECKED BY: MSA
 PROJECT: 21502.10

UNIVERSITY OF NEW ENGLAND
 PORTLAND CAMPUS
 STEVEN AVENUE ARMORY
 716 STEVENS AVE
 PORTLAND, MAINE 04103
 T (207) 283-0171

RENOVATIONS TO THE
 STEVENS AVENUE ARMORY

ROOF
 MECHANICAL
 REMOVALS
 PART PLAN

SCALE: AS NOTED
 DATE: 05-24-16

DWG. MD104

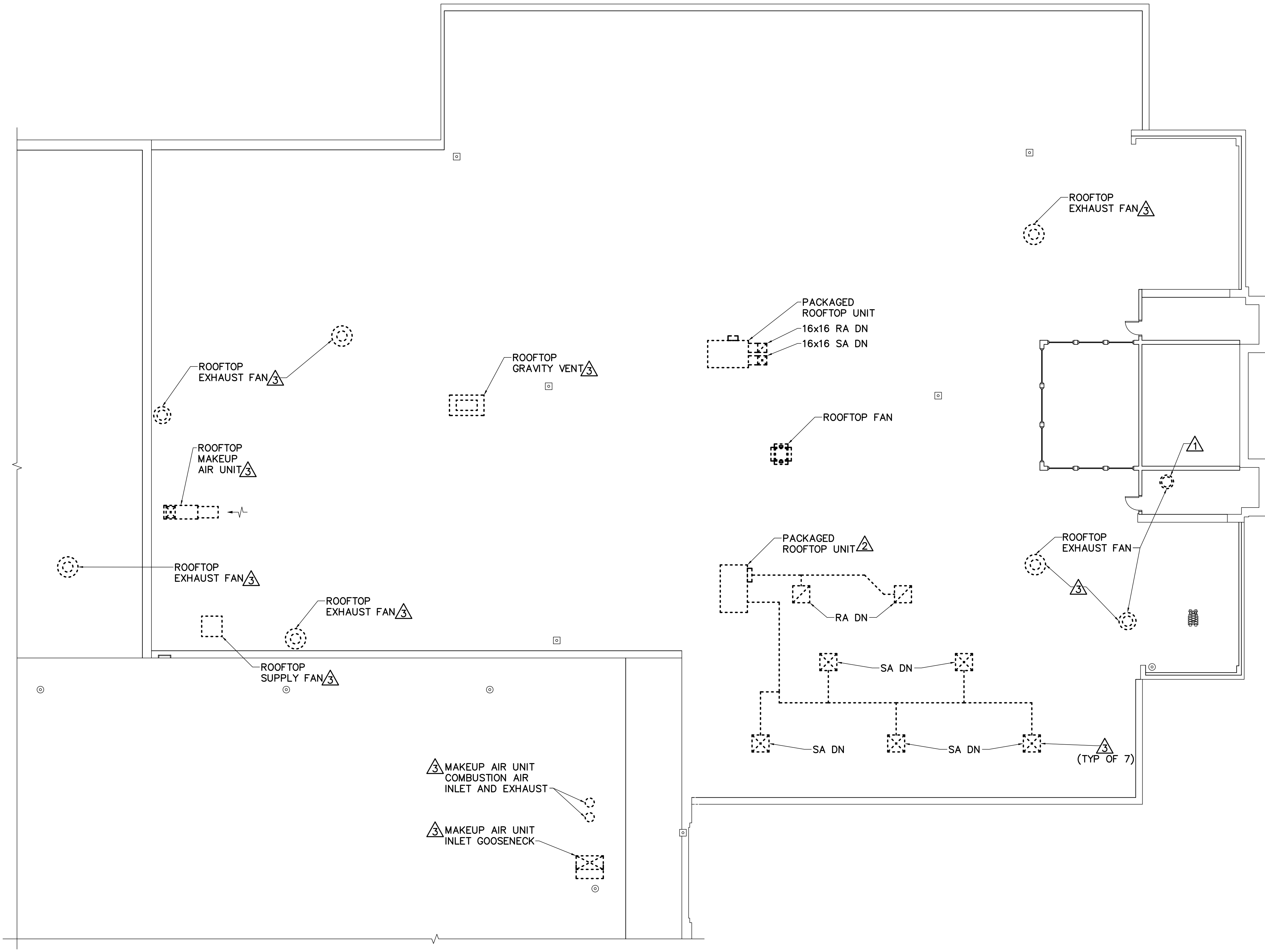
SHEET: 126 OF 169

DRAWING KEYNOTES

- △ REMOVE FAN AND DUCT RISER IN PENTHOUSE DIRECTLY BELOW ROOFTOP EXHAUST FAN.
- △ REMOVE AND TEMPORARILY STORE FOR RELOCATION AS RTU-3.
- △ REMOVE DUCT THROUGH ROOF. PATCH ROOF IN ACCORDANCE WITH DWG 14/SF502 DETAIL.

DRAWING NOTES

1. EACH RADIATOR AND FIN-TUBE RADIATOR ABOVE THE CRAWL SPACE INCLUDES LPS AND LPC PIPE DROPS TO THE CRAWL SPACE TO BE REMOVED.
2. PATCH PIPE FLOOR PENETRATIONS. REFER TO 12/SF501 FOR FLOOR PATCH DETAILS.
3. REMOVE THERMOSTAT, THERMOSTAT WIRING AND THERMOSTAT TUBING THROUGHOUT CONTRACT AREA OF SECOND FLOOR.
4. REMOVE LPS AND LPC PIPING THROUGHOUT FIRST FLOOR CONTRACT AREA.
5. REMOVE DUCTWORK THROUGHOUT FIRST FLOOR CONTRACT AREA.
6. INCLUDE REMOVAL OF DUCT AND PIPING HANGERS AND INSULATION WHERE DUCTWORK AND PIPING REMOVALS ARE SHOWN.
7. FOR EQUIPMENT REMOVALS INCLUDE REMOVAL OF CONTROLS, WIRING, HANGERS AND SUPPORTS.



1 ROOF MECHANICAL REMOVALS PART PLAN
 MD104 SCALE: 1/8"=1'-0" PLAN NORTH

