



RNC  
 RDA  
 MSA  
 DESIGNED BY:  
 DRAWN BY:  
 CHECKED BY:  
 PROJECT:  
 21502.10  
 21502.10

UNIVERSITY OF NEW ENGLAND  
 PORTLAND CAMPUS  
 STEVENS AVENUE ARMORY  
 716 STEVENS AVE  
 PORTLAND, MAINE 04103  
 T (207) 263-0171

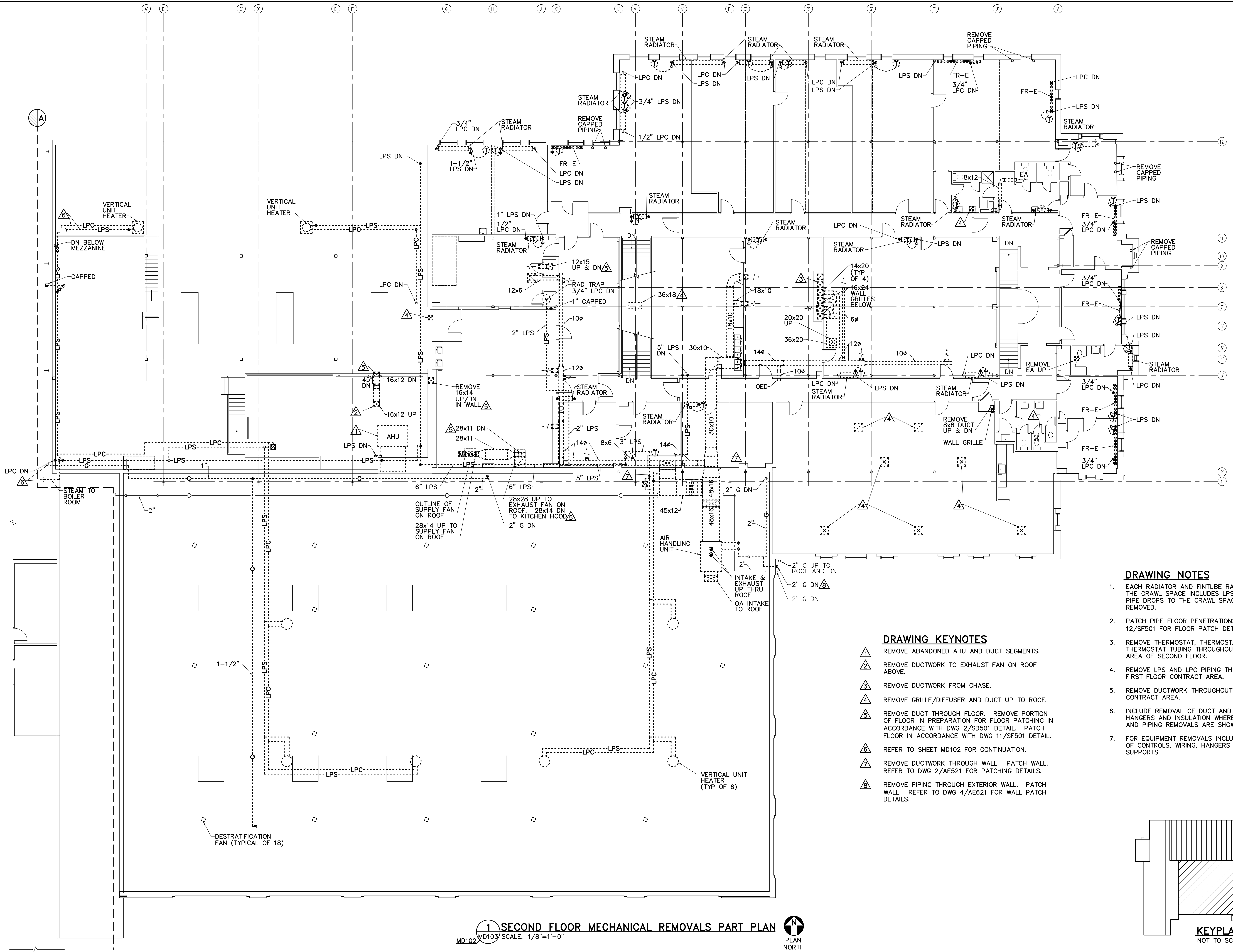
RENOVATIONS TO THE  
 STEVENS AVENUE ARMORY

SECOND FLOOR  
 MECHANICAL  
 REMOVALS  
 PART PLAN

SCALE: AS NOTED  
 DATE: 05-24-16

DWG. MD103

SHEET: 125 OF 169

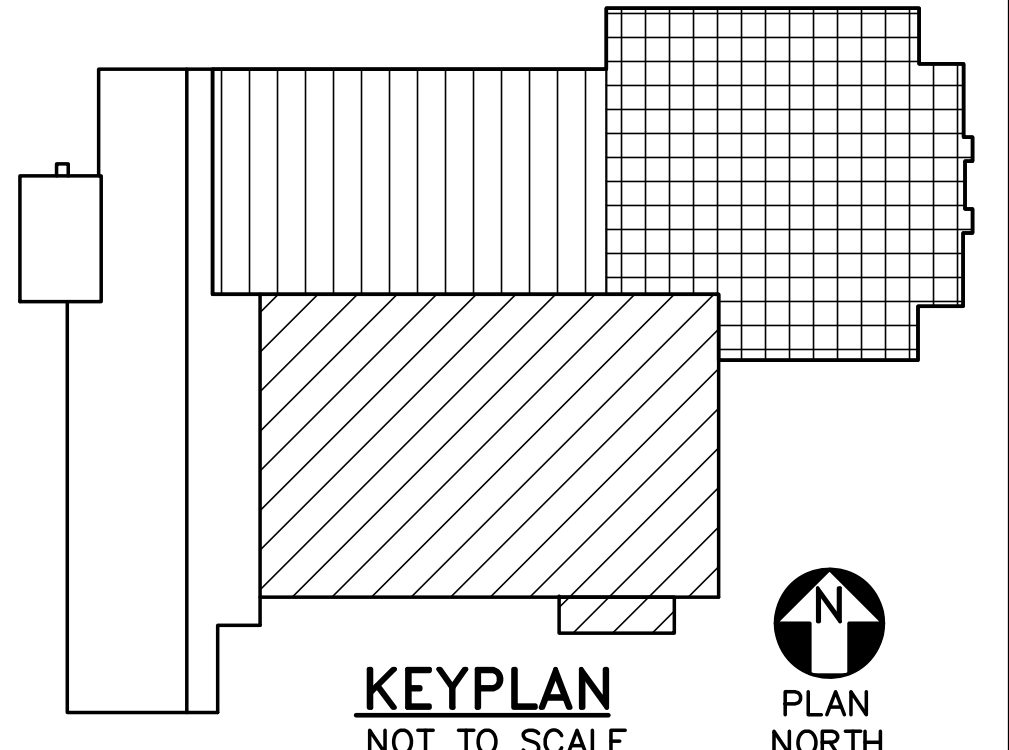


**DRAWING NOTES**

1. EACH RADIATOR AND FIN-TUBE RADIATOR ABOVE THE CRAWL SPACE INCLUDES LPS AND LPC PIPE DROPS TO THE CRAWL SPACE TO BE REMOVED.
2. PATCH PIPE FLOOR PENETRATIONS. REFER TO 12/SF501 FOR FLOOR PATCH DETAILS.
3. REMOVE THERMOSTAT, THERMOSTAT WIRING AND THERMOSTAT TUBING THROUGHOUT CONTRACT AREA OF SECOND FLOOR.
4. REMOVE LPS AND LPC PIPING THROUGHOUT FIRST FLOOR CONTRACT AREA.
5. REMOVE DUCTWORK THROUGHOUT FIRST FLOOR CONTRACT AREA.
6. INCLUDE REMOVAL OF DUCT AND PIPING HANGERS AND INSULATION WHERE DUCTWORK AND PIPING REMOVALS ARE SHOWN.
7. FOR EQUIPMENT REMOVALS INCLUDE REMOVAL OF CONTROLS, WIRING, HANGERS AND SUPPORTS.

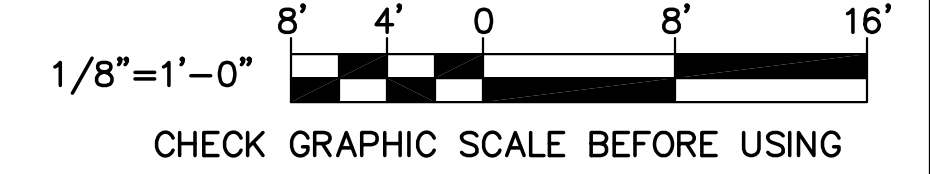
**DRAWING KEYNOTES**

- △ REMOVE ABANDONED AHU AND DUCT SEGMENTS.
- △ REMOVE DUCTWORK TO EXHAUST FAN ON ROOF ABOVE.
- △ REMOVE DUCTWORK FROM CHASE.
- △ REMOVE GRILLE/DIFFUSER AND DUCT UP TO ROOF.
- △ REMOVE DUCT THROUGH FLOOR. REMOVE PORTION OF FLOOR IN PREPARATION FOR FLOOR PATCHING IN ACCORDANCE WITH DWG 2/SD501 DETAIL. PATCH FLOOR IN ACCORDANCE WITH DWG 11/SF501 DETAIL.
- △ REFER TO SHEET MD102 FOR CONTINUATION.
- △ REMOVE DUCTWORK THROUGH WALL. PATCH WALL. REFER TO DWG 2/AE521 FOR PATCHING DETAILS.
- △ REMOVE PIPING THROUGH EXTERIOR WALL. PATCH WALL. REFER TO DWG 4/AE621 FOR WALL PATCH DETAILS.



KEYPLAN  
 NOT TO SCALE  
 PLAN NORTH

GRAPHIC SCALE  
 1/8"=1'-0"



1 SECOND FLOOR MECHANICAL REMOVALS PART PLAN  
 MD103 SCALE: 1/8"=1'-0"  
 PLAN NORTH