



DESIGNED BY: RNC
 DRAWN BY: RDA
 CHECKED BY: MSA
 PROJECT: 21502.10

UNIVERSITY OF NEW ENGLAND
 PORTLAND CAMPUS
 STEVEN AVENUE ARMORY
 716 STEVENS AVE
 PORTLAND, MAINE 04103
 T (207)283-0171

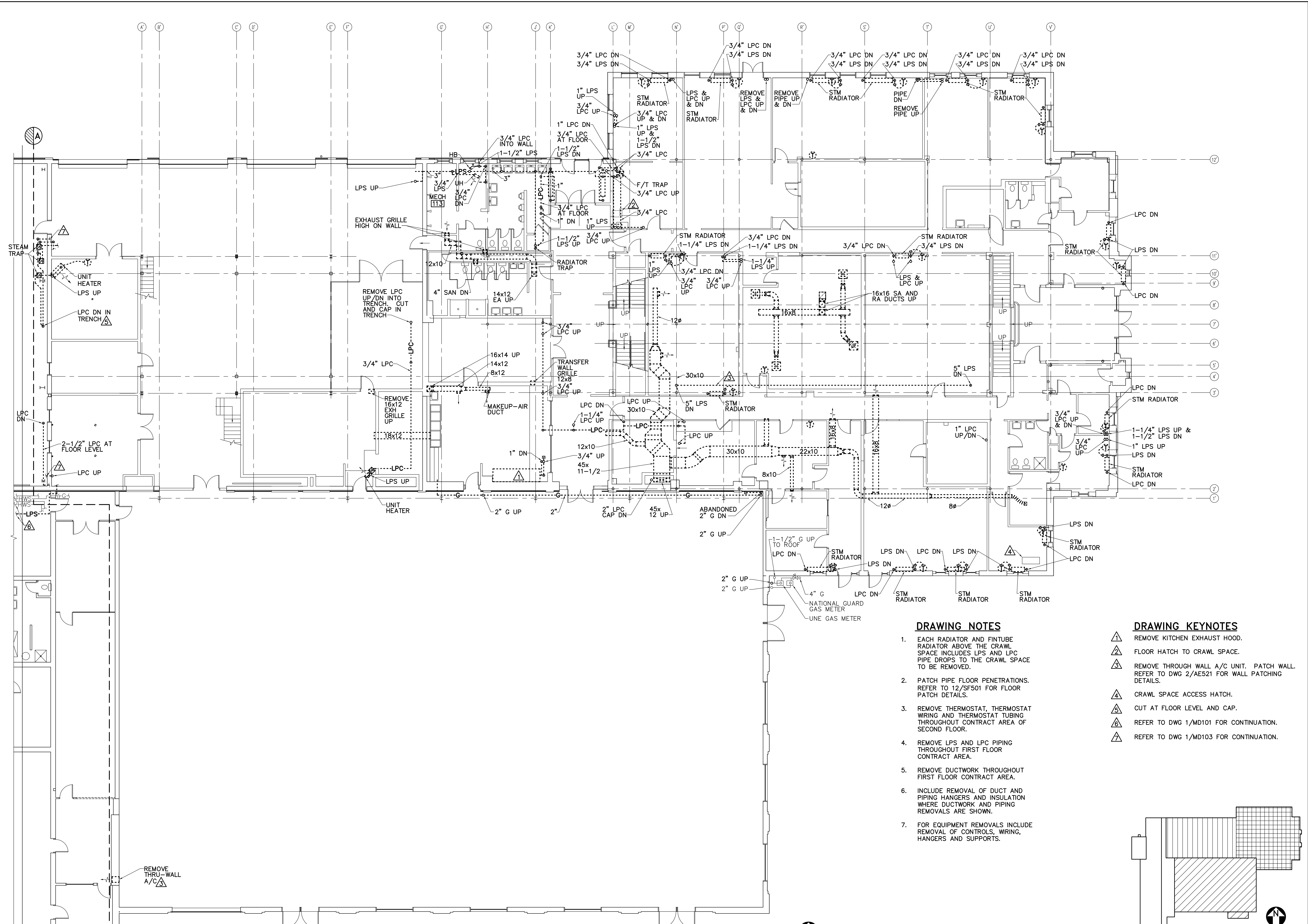
RENOVATIONS TO THE
 STEVENS AVENUE ARMORY

FIRST FLOOR MECHANICAL REMOVALS PART PLAN

SCALE: AS NOTED
 DATE: 05-24-16

DWG. MD102

SHEET: 124 OF 169

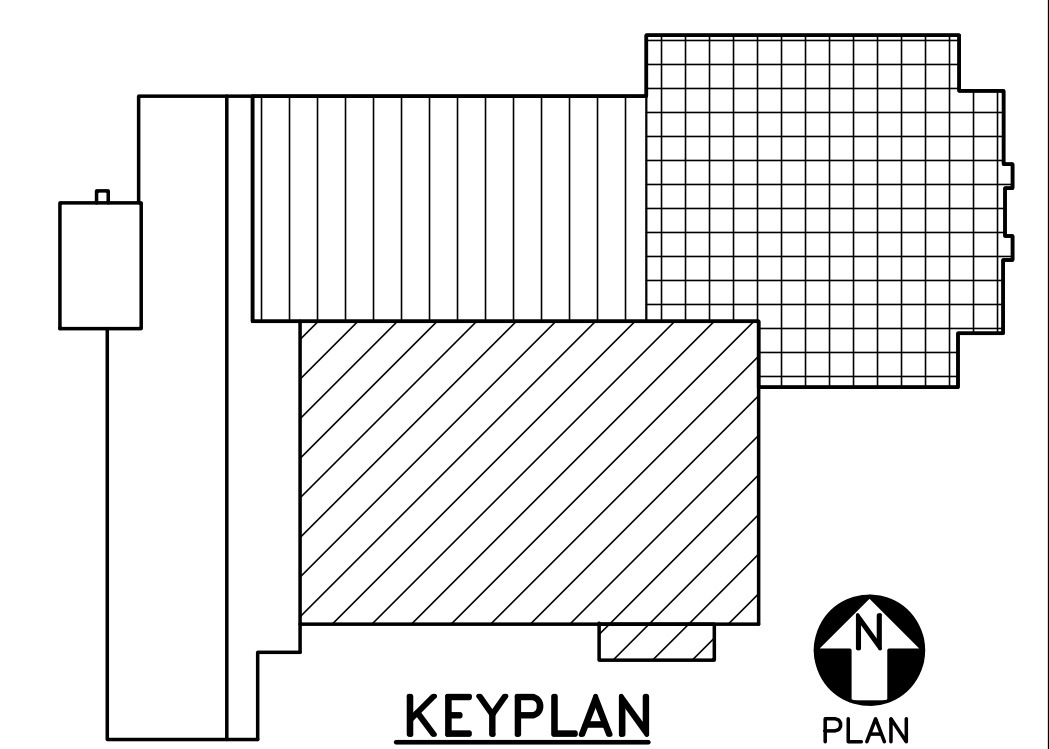


DRAWING NOTES

1. EACH RADIATOR AND FIN TUBE RADIATOR ABOVE THE CRAWL SPACE INCLUDES LPS AND LPC PIPE DROPS TO THE CRAWL SPACE TO BE REMOVED.
2. PATCH PIPE FLOOR PENETRATIONS. REFER TO 12/SF501 FOR FLOOR PATCH DETAILS.
3. REMOVE THERMOSTAT, THERMOSTAT WIRING AND THERMOSTAT TUBING THROUGHOUT CONTRACT AREA OF SECOND FLOOR.
4. REMOVE LPS AND LPC PIPING THROUGHOUT FIRST FLOOR CONTRACT AREA.
5. REMOVE DUCTWORK THROUGHOUT FIRST FLOOR CONTRACT AREA.
6. INCLUDE REMOVAL OF DUCT AND PIPING HANGERS AND INSULATION WHERE DUCTWORK AND PIPING REMOVALS ARE SHOWN.
7. FOR EQUIPMENT REMOVALS INCLUDE REMOVAL OF CONTROLS, WIRING, HANGERS AND SUPPORTS.

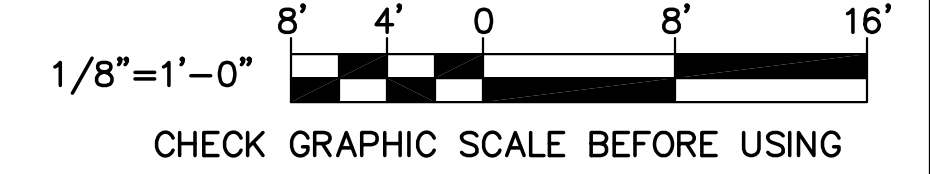
DRAWING KEYNOTES

- ⚠ REMOVE KITCHEN EXHAUST HOOD.
- ⚠ FLOOR HATCH TO CRAWL SPACE.
- ⚠ REMOVE THROUGH WALL A/C UNIT. PATCH WALL. REFER TO DWG 2/AE521 FOR WALL PATCHING DETAILS.
- ⚠ CRAWL SPACE ACCESS HATCH.
- ⚠ CUT AT FLOOR LEVEL AND CAP.
- ⚠ REFER TO DWG 1/MD101 FOR CONTINUATION.
- ⚠ REFER TO DWG 1/MD103 FOR CONTINUATION.



KEYPLAN
 NOT TO SCALE
 PLAN NORTH

GRAPHIC SCALE
 1/8"=1'-0"



CHECK GRAPHIC SCALE BEFORE USING

1 FIRST FLOOR MECHANICAL REMOVALS PART PLAN

MD101, MD103, MD102 SCALE: 1/8"=1'-0"

