



RNC RDA MSA
 DESIGNED BY: RNC
 DRAWN BY: RDA
 CHECKED BY: MSA
 PROJECT: 21502.10

UNIVERSITY OF NEW ENGLAND
 PORTLAND CAMPUS
 STEVEN AVENUE ARMORY
 716 STEVENS AVE
 PORTLAND, MAINE 04103
 T (207) 283-0171

RENOVATIONS TO THE
 STEVENS AVENUE ARMORY

FIRST FLOOR & CRAWLSPACE
 MECHANICAL
 REMOVALS
 PART PLANS

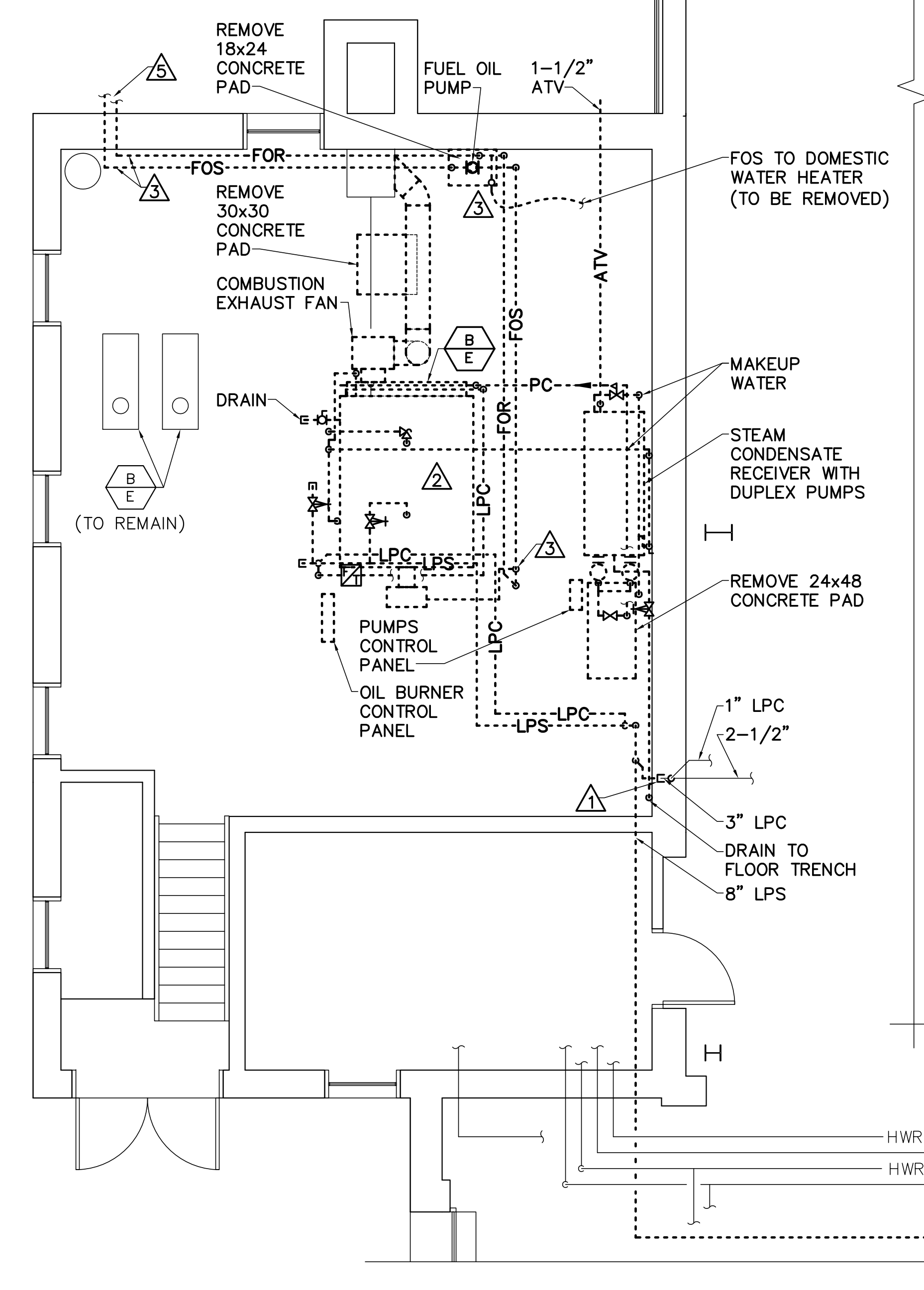
SCALE: AS NOTED
 DATE: 05-24-16
 DWG: MD101
 SHEET: 123 OF 169

GENERAL NOTE

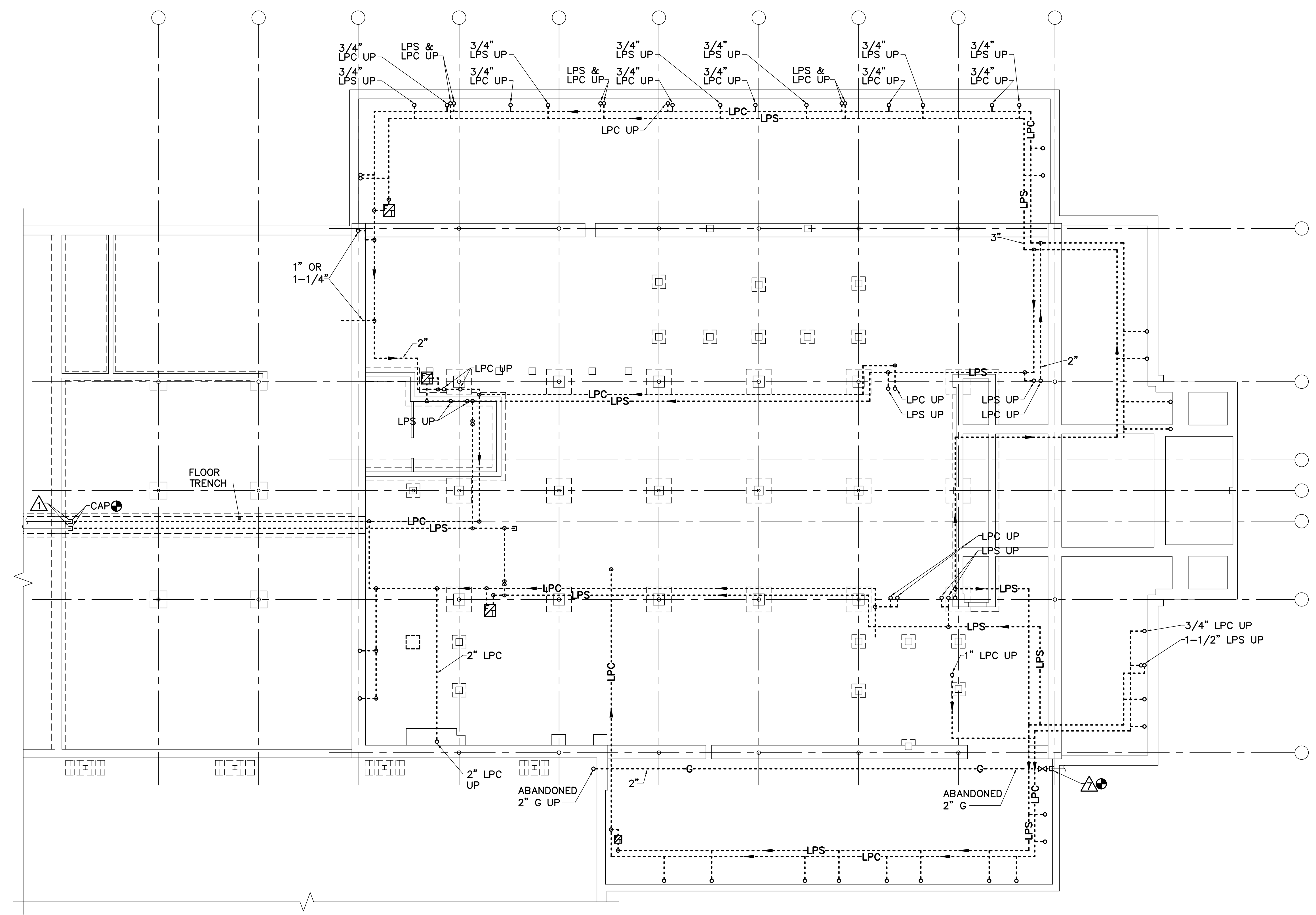
- REMOVE PIPING AS INDICATED. REMOVALS SHALL INCLUDE HANGERS, SUPPORTS, CONTROLS & ACCESSORIES.

DRAWING KEYNOTES

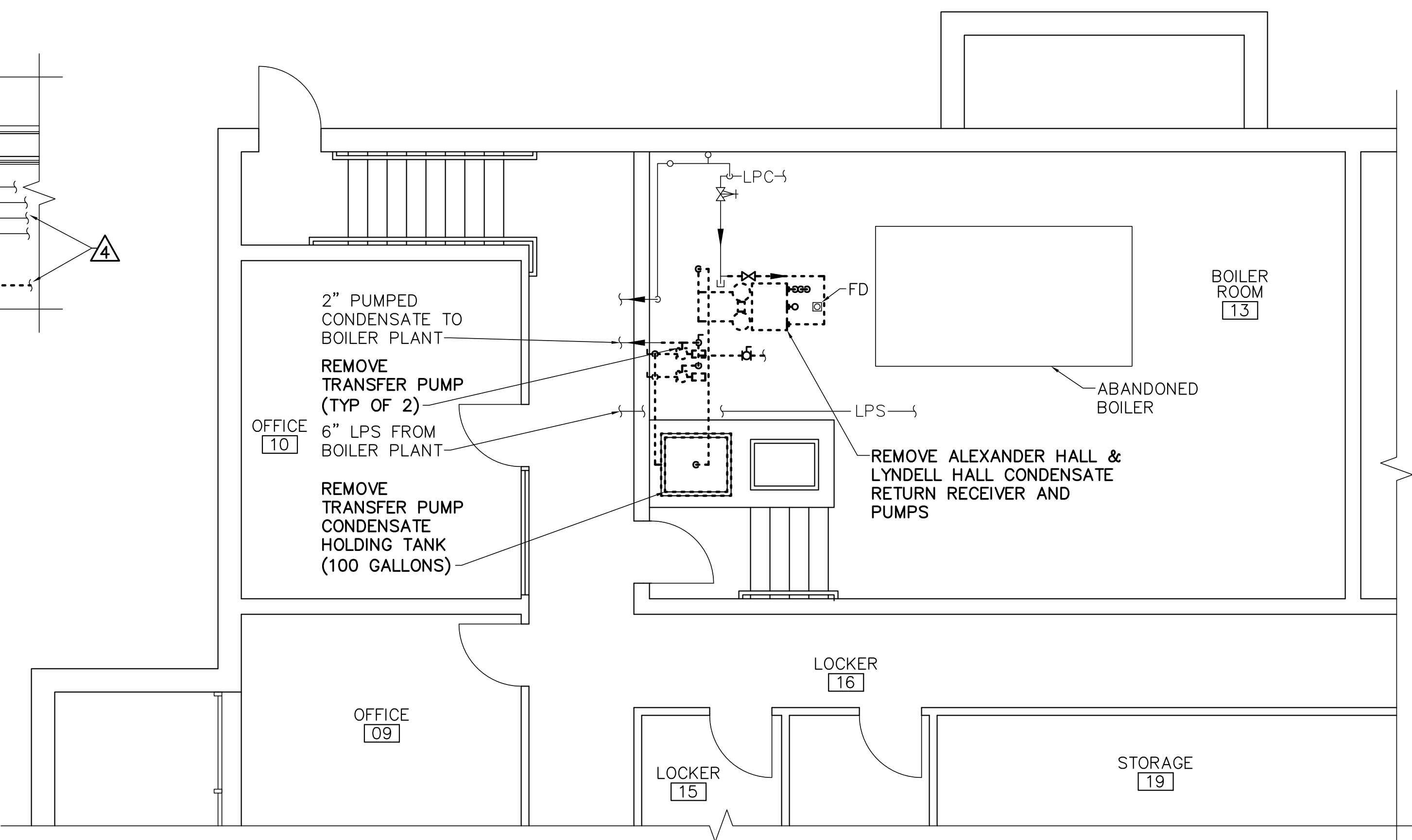
- △ CUT AND CAP PIPING AT TRENCH OPENING.
- △ STEAM BOILER ASSEMBLY, BREACHING, COMBUSTION AIR FAN, STEAM BOILER CONTROLS AND ACCESSORIES, STEAM CONDENSATE RECEIVER, STEAM CONDENSATE PUMPS, LPS, LPC, PC, MAKEUP WATER TO STEAM BOILER AND ASSOCIATED STEAM SYSTEM DRAIN PIPING, HANGERS AND SUPPORTS SHALL BE REMOVED THROUGHOUT BOILER ROOM.
- △ REMOVE FUEL OIL SUPPLY AND RETURN PIPING SYSTEM THROUGHOUT BOILER ROOM. DRAIN, HANDLE AND DISPOSE OF OIL IN PIPING IN COMPLIANCE WITH STATE AND FEDERAL FUEL OIL AND WASTE OIL HANDLING REQUIREMENTS.
- △ REFER TO DWG 1/MD102 FOR CONTINUATION.
- △ REFER TO CIVIL DWGS FOR FUEL OIL PIPING CONTINUATION.
- △ CAP STACK CONNECTION OPENING WATER TIGHT AND INSULATE.
- △ CAP GAS PIPE AT WALL.



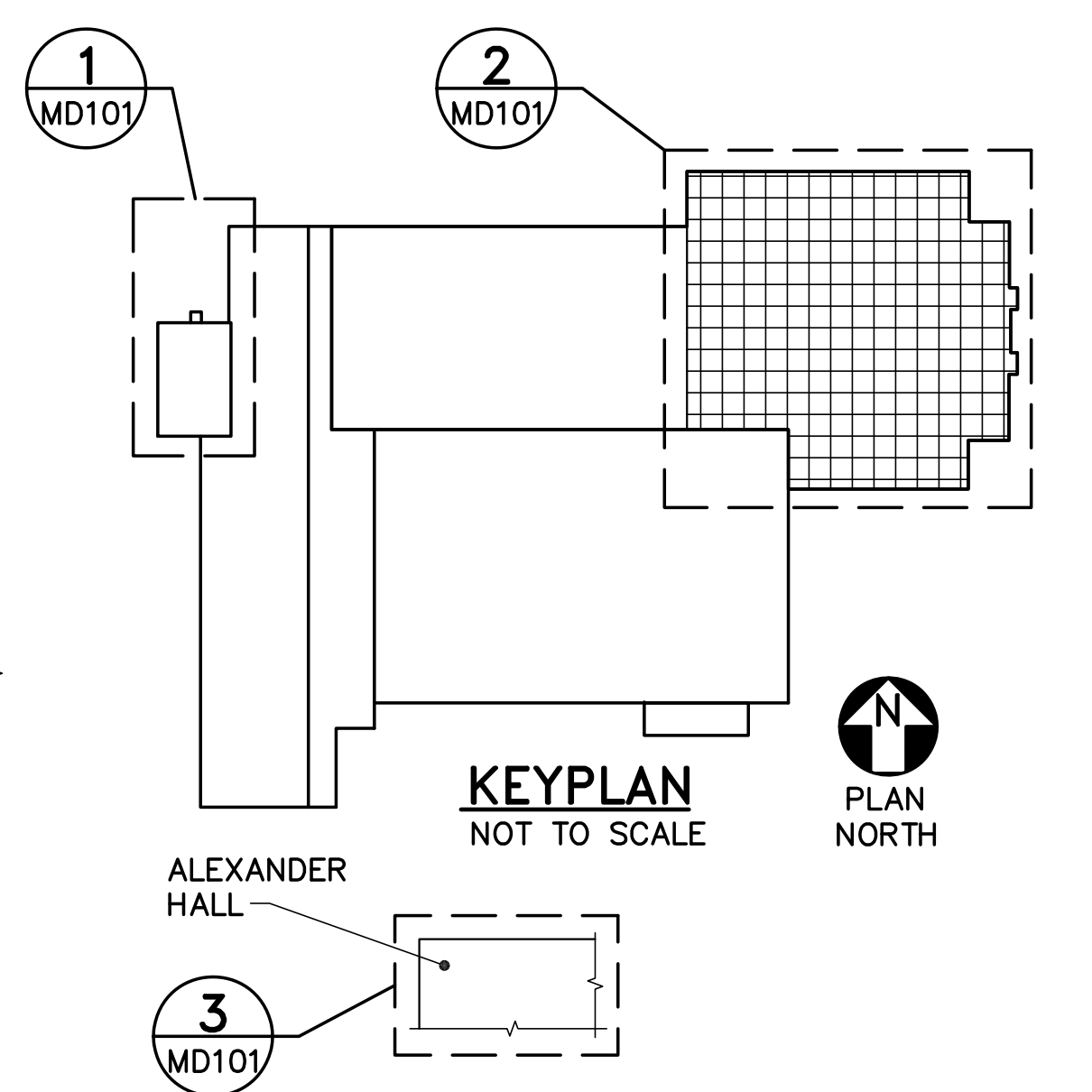
1 FIRST FLOOR MECHANICAL REMOVALS PART PLAN
 MD102 SCALE: 1/4"=1'-0" PLAN NORTH



2 CRAWLSPACE MECHANICAL REMOVALS PART PLAN
 MD101 SCALE: 1/8"=1'-0" PLAN NORTH



3 ALEXANDER HALL MECHANICAL REMOVALS PART PLAN (BOILER ROOM)
 MD101 SCALE: 1/8"=1'-0" PLAN NORTH



KEYPLAN
 NOT TO SCALE PLAN NORTH

